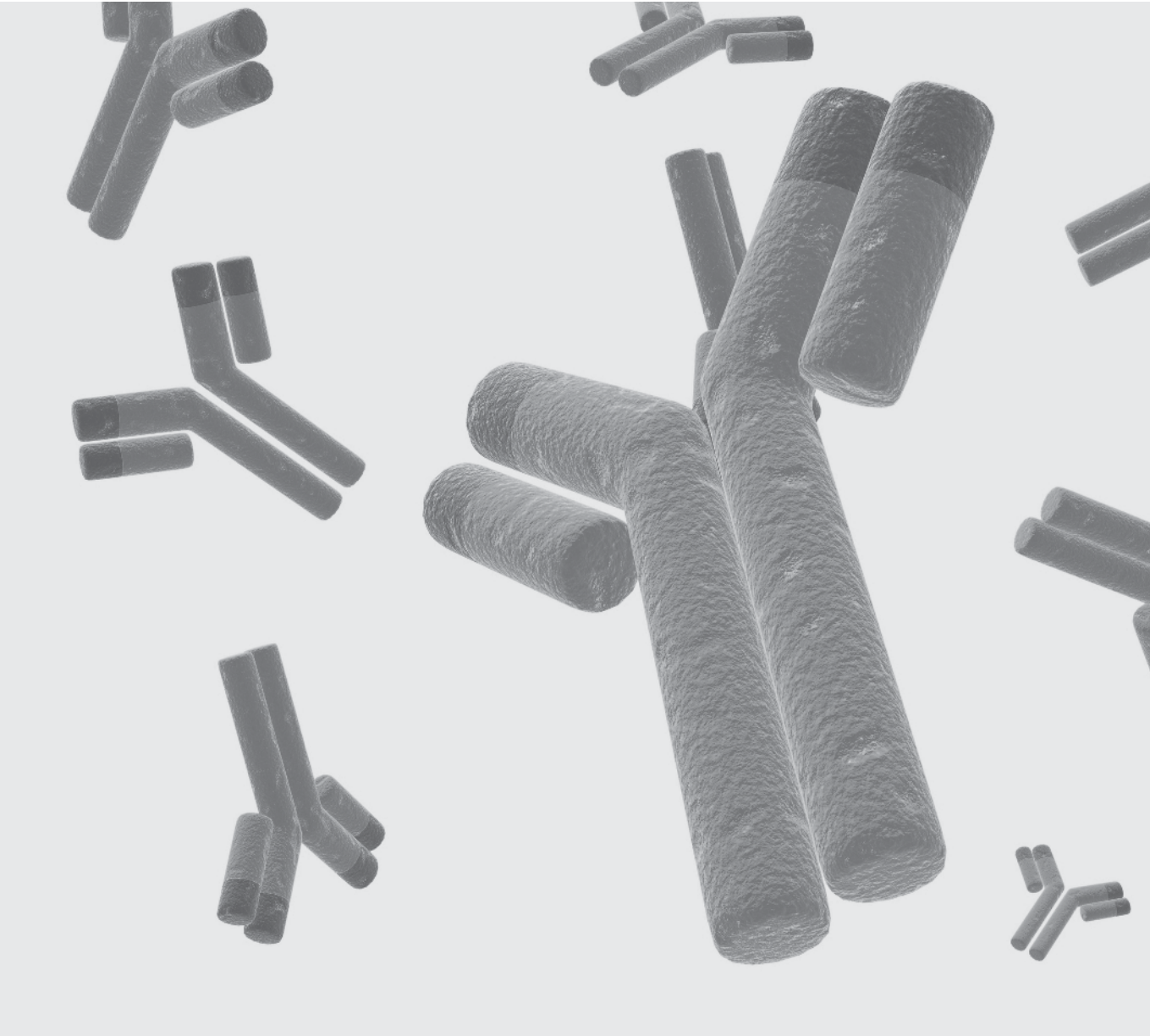

BD Biosciences

NA/LE Reagents Product List



For Research Use Only. Not for use in diagnostic or therapeutic procedures.

NA/LE Reagents

In vitro assays of cellular function contribute significantly to a better understanding of the immune response and mechanisms of host defense. Some monoclonal antibodies can induce cell proliferation, adhesion, or migration, while others may inhibit these biological activities. We offer a broad spectrum of monoclonal antibodies which possess functional activity and offer our no azide, low endotoxin format (NA/LE) specifically to eliminate the problems associated with azide toxicity and endotoxin effects on in vivo and in vitro functional studies.

As part of our commitment to provide the highest quality reagents, we have significantly improved our NA/LE production capabilities and can provide products with reduced endotoxin levels. Whenever possible, our NA/LE products now have an endotoxin level of ≤ 0.001 ng/ μ g protein, a 10-fold improvement.

NA/LE Reagents Product List

Anti-Human

| DESCRIPTION | REACT | CLONE | ISOTYPE | APPS | REG | FORMAT | SIZE | ENDOTOXIN | CAT. NO. |
|--|--------------|----------|------------------------------------|------------------|-----|--------|---------|--------------------------|-----------|
| CD2 (LFA-2) | Hu | RPA-2.10 | Mouse IgG ₁ , κ | FA, FCM | RUO | NA/LE | 0.5 mg | ≤ 0.001 ng/ μ g | BDB555323 |
| CD3 | Hu | HIT3a | Mouse IgG _{2b} , κ | FA, FCM | RUO | NA/LE | 0.5 mg | ≤ 0.001 ng/ μ g | BDB555336 |
| | | UCHT1 | Mouse IgG ₁ , κ | FA, FCM | RUO | NA/LE | 0.5 mg | ≤ 0.001 ng/ μ g | BDB555329 |
| CD4 | Hu | RPA-T4 | Mouse IgG ₁ , κ | FA, FCM | RUO | NA/LE | 0.5 mg | ≤ 0.001 ng/ μ g | BDB555343 |
| CD8 | Hu | HIT8a | Mouse IgG ₁ , κ | FCM | RUO | NA/LE | 0.5 mg | ≤ 0.001 ng/ μ g | BDB555630 |
| | | RPA-T8 | Mouse IgG ₁ , κ | FCM | RUO | NA/LE | 0.5 mg | ≤ 0.001 ng/ μ g | BDB555363 |
| CD11a (Integrin α^L chain, LFA-1 α) | Hu | G43-25B | Mouse IgG _{2b} , κ | FCM | RUO | NA/LE | 0.5 mg | ≤ 0.01 ng/ μ g | BDB555377 |
| | Hu, Rab, Dog | HI111 | Mouse IgG ₁ , κ | FA, FCM, IHC(Fr) | RUO | NA/LE | 0.5 mg | ≤ 0.001 ng/ μ g | BDB555381 |
| CD11b/Mac-1 (CR3) | Hu | ICRF44 | Mouse IgG ₁ , κ | FA, FCM | RUO | NA/LE | 0.5 mg | ≤ 0.001 ng/ μ g | BDB555385 |
| CD11c (Integrin α^X chain) | Hu | B-ly6 | Mouse IgG ₁ , κ | FCM | RUO | NA/LE | 0.5 mg | ≤ 0.001 ng/ μ g | BDB555390 |
| CD14 | Hu, Dog | M5E2 | Mouse IgG _{2b} , κ | FCM | RUO | NA/LE | 0.5 mg | ≤ 0.001 ng/ μ g | BDB555395 |
| sCD14 (Soluble CD14) | Hu | 3-C39 | Mouse IgG _{2b} , κ | Neu | RUO | NA/LE | 0.5 mg | ≤ 0.001 ng/ μ g | BDB552052 |
| CD16 | Hu | 3G8 | Mouse IgG ₁ , κ | FA, FCM | RUO | NA/LE | 0.5 mg | ≤ 0.001 ng/ μ g | BDB555403 |
| CD19 | Hu | H1B19 | Mouse IgG ₁ , κ | FCM | RUO | NA/LE | 0.5 mg | ≤ 0.001 ng/ μ g | BDB555409 |
| CD25 (IL-2 Receptor α chain) | Hu | M-A251 | Mouse IgG ₁ , κ | FA, FCM | RUO | NA/LE | 0.5 mg | ≤ 0.01 ng/ μ g | BDB555429 |
| CD28 | Hu | CD28.2 | Mouse IgG ₁ , κ | Bio, FCM | RUO | NA/LE | 0.5 mg | ≤ 0.001 ng/ μ g | BDB555725 |
| CD29 (Integrin β_1 chain) | Hu | HUTS-21 | Mouse IgG _{2b} , κ | FCM | RUO | NA/LE | 0.5 mg | ≤ 0.001 ng/ μ g | BDB556047 |
| CD32 (Fc γ RII) | Hu | 3D3 | Mouse IgG ₁ , κ | FCM | RUO | NA/LE | 0.5 mg | ≤ 0.001 ng/ μ g | BDB552930 |
| CD40 | Hu | 5C3 | Mouse IgG ₁ , κ | FCM | RUO | NA/LE | 0.5 mg | ≤ 0.001 ng/ μ g | BDB555586 |
| CD44 (Pgp-1, H-CAM, Ly24) | Hu | 515 | Mouse IgG ₁ , κ | FCM | RUO | NA/LE | 0.5 mg | ≤ 0.001 ng/ μ g | BDB550990 |
| CD47 (IAP) | Hu | B6H12 | Mouse IgG ₁ , κ | FCM | RUO | NA/LE | 0.5 mg | ≤ 0.001 ng/ μ g | BDB556043 |
| CD49d (Integrin α_4 chain) | Hu, Dog | 9F10 | Mouse IgG ₁ , κ | FA, FCM | RUO | NA/LE | 0.5 mg | ≤ 0.001 ng/ μ g | BDB555501 |
| CD49e (Integrin α_5 chain) | Hu, Rab | IIA1 | Mouse IgG ₁ , κ | FA, FCM | RUO | NA/LE | 0.5 mg | ≤ 0.001 ng/ μ g | BDB555614 |
| | Hu, Pig | VCS | Mouse IgG ₁ , κ | FA, FCM, IP | RUO | NA/LE | 0.5 mg | ≤ 0.01 ng/ μ g | BDB555650 |
| CD54 (ICAM-1) | Hu | HA58 | Mouse IgG ₁ , κ | FCM | RUO | NA/LE | 0.5 mg | ≤ 0.001 ng/ μ g | BDB555509 |
| CD56 (N-CAM) | Hu | B159 | Mouse IgG ₁ , κ | FCM | RUO | NA/LE | 0.5 mg | ≤ 0.001 ng/ μ g | BDB555513 |
| CD62L (L-selectin) | Hu | Dreg 56 | Mouse IgG ₁ , κ | FCM | RUO | NA/LE | 0.5 mg | ≤ 0.001 ng/ μ g | BDB555541 |
| CD62P (P-selectin) | Hu | AK-4 | Mouse IgG ₁ , κ | FCM | RUO | NA/LE | 0.5 mg | ≤ 0.001 ng/ μ g | BDB551345 |
| CD80 (B7-1) | Hu | L307.4 | Mouse IgG ₁ , κ | FA, FCM | RUO | NA/LE | 0.5 mg | ≤ 0.001 ng/ μ g | BDB556058 |
| CD85g | Hu | 17G10.2 | Mouse IgG ₁ , κ | FCM | RUO | NA/LE | 0.5 mg | ≤ 0.001 ng/ μ g | BDB562500 |
| CD86 (B70/B7-2) | Hu | IT2.2 | Mouse IgG _{2b} , κ | FA, FCM | RUO | NA/LE | 0.5 mg | ≤ 0.001 ng/ μ g | BDB555662 |
| CD90 (Thy-1) | Hu, Pig, Rab | 5E10 | Mouse IgG ₁ , κ | FCM | RUO | NA/LE | 0.5 mg | ≤ 0.001 ng/ μ g | BDB555592 |
| CD95 (Fas/APO-1) | Hu, Dog, Pig | DX2 | Mouse IgG ₁ , κ | FA, FCM | RUO | NA/LE | 0.5 mg | ≤ 0.001 ng/ μ g | BDB555670 |
| CDw93 (C1qRp) | Hu | R139 | Mouse IgG _{2b} , κ | FA, FCM | RUO | NA/LE | 0.5 mg | ≤ 0.001 ng/ μ g | BDB552954 |
| CD119 (IFN- γ Receptor α chain) | Hu | GIR-208 | Mouse IgG ₁ , κ | Neu | RUO | NA/LE | 0.25 mg | ≤ 0.001 ng/ μ g | BDB557531 |
| CD123 | Hu | 7G3 | Mouse IgG _{2b} , κ | Neu | RUO | NA/LE | 0.5 mg | ≤ 0.01 ng/ μ g | BDB554526 |
| CD152 (CTLA-4) | Hu | BN13 | Mouse IgG _{2b} , κ | FA, FCM | RUO | NA/LE | 0.5 mg | ≤ 0.001 ng/ μ g | BDB555850 |
| CD154 (CD40L) | Hu | TRAP1 | Mouse IgG ₁ , κ | FA, FCM | RUO | NA/LE | 0.5 mg | ≤ 0.001 ng/ μ g | BDB555697 |
| CD162 (PSGL-1) | Hu | KPL-1 | Mouse IgG ₁ , κ | FCM, WB | RUO | NA/LE | 0.5 mg | ≤ 0.001 ng/ μ g | BDB556052 |
| CD178 (Fas Ligand, CD95 Ligand) | Hu | NOK-1 | Mouse IgG ₁ | FA, FCM | RUO | NA/LE | 0.25 mg | ≤ 0.001 ng/ μ g | BDB556371 |
| | | NOK-2 | Mouse IgG _{2b} | ELISA, FA, IP | RUO | NA/LE | 0.25 mg | ≤ 0.01 ng/ μ g | BDB556375 |

NA/LE Reagents Product List

Anti-Human (continued)

| DESCRIPTION | REACT | CLONE | ISOTYPE | APPS | REG | FORMAT | SIZE | ENDOTOXIN | CAT. NO. |
|-------------------------------------|---------|--------------|-----------------------------|------------|-----|--------|---------|---------------|-----------|
| CD181 (CXCR1, IL-8RA, CD128a) | Hu | 5A12 | Mouse IgG _{2b} , κ | FA, FCM | RUO | NA/LE | 0.5 mg | ≤ 0.001 ng/μg | BDB555936 |
| CD183 (CXCR3) | Hu | 1C6/CXCR3 | Mouse IgG ₁ , κ | FA, FCM | RUO | NA/LE | 0.5 mg | ≤ 0.001 ng/μg | BDB557184 |
| CD184 (CXCR4, Fusin) | Hu | 12G5 | Mouse IgG _{2b} , κ | FA, FCM | RUO | NA/LE | 0.5 mg | ≤ 0.001 ng/μg | BDB555971 |
| CD195 (CCR5) | Hu | 2D7/CCR5 | Mouse IgG _{2b} , κ | FA, FCM | RUO | NA/LE | 0.5 mg | ≤ 0.001 ng/μg | BDB555990 |
| CD206 (Macrophage mannose receptor) | Hu | 19.2 | Mouse IgG ₁ , κ | FCM | RUO | NA/LE | 0.5 mg | ≤ 0.001 ng/μg | BDB555952 |
| CD210 (IL-10 receptor) | Hu | 3F9 | Rat IgG _{2a} , κ | FA, FCM | RUO | NA/LE | 0.5 mg | ≤ 0.001 ng/μg | BDB556011 |
| CD226 (DNAM-1) | Hu | DX11 | Mouse IgG ₁ , κ | FA, FCM | RUO | NA/LE | 0.5 mg | ≤ 0.001 ng/μg | BDB559786 |
| CD253 (TRAIL) | Hu | RIK-2 | Mouse IgG ₁ | Block, FA | RUO | NA/LE | 0.25 mg | ≤ 0.001 ng/μg | BDB550912 |
| CD279 (PD-1) | Hu | EH12.1 | Mouse IgG ₁ , κ | FCM | RUO | NA/LE | 0.5 mg | ≤ 0.001 ng/μg | BDB562138 |
| CD282 (TLR2) | Hu | 11G7 | Mouse IgG ₁ , κ | Block, FCM | RUO | NA/LE | 0.5 mg | ≤ 0.001 ng/μg | BDB558317 |
| GM-CSF | Hu | BVD2-23B6 | Rat IgG _{2a} | Neu | RUO | NA/LE | 0.5 mg | ≤ 0.01 ng/μg | BDB554501 |
| HLA-ABC | Hu | DX17 | Mouse IgG ₁ , κ | Block, FCM | RUO | NA/LE | 0.5 mg | ≤ 0.001 ng/μg | BDB560187 |
| HLA-DR | Hu, Dog | L243 (G46-6) | Mouse IgG _{2b} , κ | FA, FCM | RUO | NA/LE | 0.5 mg | ≤ 0.01 ng/μg | BDB555809 |
| HLA-DR, DP, DQ | Hu | TÜ39 | Mouse IgG _{2b} , κ | FCM | RUO | NA/LE | 0.5 mg | ≤ 0.001 ng/μg | BDB555556 |
| IFN-α2b | Hu | 7N4-1 | Mouse IgG ₁ , κ | FA, IHC | RUO | NA/LE | 0.5 mg | ≤ 0.001 ng/μg | BDB551795 |
| IFN-γ | Hu | B27 | Mouse IgG ₁ , κ | Neu | RUO | NA/LE | 0.5 mg | ≤ 0.001 ng/μg | BDB554698 |
| | | NIB42 | Mouse IgG ₁ | Neu | RUO | NA/LE | 0.5 mg | ≤ 0.001 ng/μg | BDB554547 |
| IL-1β | Hu | AS10 | Mouse IgG ₁ , κ | Neu | RUO | NA/LE | 0.5 mg | ≤ 0.001 ng/μg | BDB552289 |
| IL-2 | Hu | MQ1-17H12 | Rat IgG _{2a} , κ | Neu | RUO | NA/LE | 0.5 mg | ≤ 0.001 ng/μg | BDB554562 |
| IL-4 | Hu | MP4-25D2 | Rat IgG ₁ | Neu | RUO | NA/LE | 0.5 mg | ≤ 0.001 ng/μg | BDB554481 |
| IL-5 | Hu, Ms | TRFK5 | Rat IgG ₁ | Neu | RUO | NA/LE | 0.5 mg | ≤ 0.001 ng/μg | BDB554391 |
| IL-6 | Hu | MQ2-13A5 | Rat IgG ₁ | Neu | RUO | NA/LE | 0.5 mg | ≤ 0.001 ng/μg | BDB554541 |
| IL-7 | Hu | BVD10-40F6 | Rat IgG ₁ , κ | Neu | RUO | NA/LE | 0.5 mg | ≤ 0.001 ng/μg | BDB554492 |
| IL-8 | Hu | 2A2 | Mouse IgG ₁ | Neu, WB | RUO | NA/LE | 0.5 mg | ≤ 0.001 ng/μg | BDB554726 |
| IL-10 | Hu, Vir | JES3-19F1 | Rat IgG _{2a} | Neu | RUO | NA/LE | 0.5 mg | ≤ 0.001 ng/μg | BDB554703 |
| | | JES3-9D7 | Rat IgG ₁ | Neu | RUO | NA/LE | 0.5 mg | ≤ 0.001 ng/μg | BDB554495 |
| IL-12 (p40/p70) | Hu | C8.6 | Mouse IgG ₁ | Neu | RUO | NA/LE | 0.5 mg | ≤ 0.001 ng/μg | BDB554659 |
| IL-13 | Hu | JES10-5A2 | Rat IgG ₁ | Neu | RUO | NA/LE | 0.5 mg | ≤ 0.01 ng/μg | BDB554568 |
| MCP-1 | Hu | 5D3-F7 | Mouse IgG ₁ , κ | Neu | RUO | NA/LE | 0.5 mg | ≤ 0.01 ng/μg | BDB554661 |
| NKp46 | Hu | 9E2/NKp46 | Mouse IgG ₁ , κ | FA, FCM | RUO | NA/LE | 0.5 mg | ≤ 0.01 ng/μg | BDB557847 |
| TNF | Hu | MAb1 | Mouse IgG ₁ | Neu | RUO | NA/LE | 0.5 mg | ≤ 0.001 ng/μg | BDB554508 |
| | | MABTNF-A5 | Mouse IgG _{2a} , κ | Neu | RUO | NA/LE | 0.5 mg | ≤ 0.001 ng/μg | BDB552467 |

NA/LE Reagents Product List

Anti-Mouse

| DESCRIPTION | REACT | CLONE | ISOTYPE | APPS | REG | FORMAT | SIZE | ENDOTOXIN | CAT. NO. |
|---|---------|---------------|--|---------------------------------------|-----|--------|---------|---------------|-----------|
| CD1d (CD1.1, Ly-38) | Ms | 1B1 | Rat (Lewis) IgG _{2b} , κ | Block, FCM, IP | RUO | NA/LE | 0.5 mg | ≤ 0.001 ng/μg | BDB559438 |
| CD3e (CD3 ε chain) | Ms | 145-2C11 | Armenian Hamster IgG1, κ | Block, Cost, FCM | RUO | NA/LE | 0.5 mg | ≤ 0.001 ng/μg | BDB553057 |
| CD4 (L3T4) | Ms | GK1.5 | Rat (Lewis) IgG _{2b} , κ | Block, Cost, Cyt, FCM | RUO | NA/LE | 0.5 mg | ≤ 0.001 ng/μg | BDB553726 |
| | | H129.19 | Rat (Lou/WS1) IgG _{2a} , κ | Block, Cyt, FCM | RUO | NA/LE | 0.5 mg | ≤ 0.01 ng/μg | BDB553646 |
| CD8a (Ly-2) | Ms | 53-6.7 | Rat (LOU/WS1/M) IgG _{2a} , κ | Block, Cyt, FCM | RUO | NA/LE | 0.5 mg | ≤ 0.001 ng/μg | BDB553026 |
| CD9 | Ms | KMC8 | Rat (LOU/MN) IgG _{2a} , κ | Block, Cost, FCM, IF, IHC(Fr), IP, WB | RUO | NA/LE | 0.5 mg | ≤ 0.001 ng/μg | BDB553758 |
| CD11a (Integrin α _L chain, LFA-1α) | Ms | M17/4 | Rat (Wistar/Furth) IgG _{2a} , κ | Block, FCM, IP | RUO | NA/LE | 0.5 mg | ≤ 0.01 ng/μg | BDB553337 |
| CD11b (Integrin α _M chain) | Hu, Ms | M1/70 | Rat (DA) IgG _{2b} , κ | Block, FCM, IP | RUO | NA/LE | 0.5 mg | ≤ 0.001 ng/μg | BDB553307 |
| CD14 | Ms | 4C1/CD14 | Rat (DA) IgG _{2b} , κ | Block, FCM, IP | RUO | NA/LE | 0.5 mg | ≤ 0.001 ng/μg | BDB557896 |
| CD16/CD32 (Fcγ III/II Receptor) | Ms | 2.4G2 | Rat (Sprague-Dawley) IgG _{2b} , κ | Block, Cost, FCM | RUO | NA/LE | 0.5 mg | ≤ 0.001 ng/μg | BDB553140 |
| CD18 (Integrin β ₂ chain, CR3/CR4) | Ms | GAME-46 | Rat (Sprague-Dawley) IgG ₁ , κ | Block, FCM, IP | RUO | NA/LE | 0.5 mg | ≤ 0.001 ng/μg | BDB555280 |
| | | M18/2 | Rat IgG _{2a} , κ | Block, FA, FCM | RUO | NA/LE | 0.5 mg | ≤ 0.001 ng/μg | BDB553341 |
| CD19 | Ms | 1D3 | Rat (Lewis) IgG _{2a} , κ | Cost, FCM | RUO | NA/LE | 0.5 mg | ≤ 0.001 ng/μg | BDB553782 |
| CD21/CD35 (CR2/CR1) | Ms | 7G6 | Rat (SD) IgG _{2b} , κ | Block, Cost, FCM | RUO | NA/LE | 0.5 mg | ≤ 0.01 ng/μg | BDB559831 |
| CD25 (IL-2 Receptor α chain, p55) | Ms | 3C7 | Rat (Lewis) IgG _{2b} , κ | Block, FCM | RUO | NA/LE | 0.5 mg | ≤ 0.001 ng/μg | BDB553073 |
| | | PC61 | Rat (Outbred OFA) IgG ₁ , λ | Block, Cyt, FCM | RUO | NA/LE | 0.5 mg | ≤ 0.001 ng/μg | BDB553864 |
| CD27 | Ms, Rat | LG.3A10 | Armenian Hamster IgG1, κ | Cost, FCM, IHC(Fr), IP | RUO | NA/LE | 0.5 mg | ≤ 0.001 ng/μg | BDB553777 |
| CD28 | Ms | 37.51 | Syrian Hamster IgG2, λ.1 | Block, Cost, FCM | RUO | NA/LE | 0.5 mg | ≤ 0.001 ng/μg | BDB553294 |
| CD29 (Integrin β ₁ chain) | Ms, Rat | Ha2/5 | Armenian Hamster IgM, κ | Block, FCM | RUO | NA/LE | 0.5 mg | ≤ 0.001 ng/μg | BDB555002 |
| CD31 (PECAM-1) | Ms | 390 | Rat (Lewis) IgG _{2a} , κ | Block, FCM | RUO | NA/LE | 0.5 mg | ≤ 0.001 ng/μg | BDB553708 |
| | | MEC 13.3 | Rat (LEW/Cr1BR) IgG _{2a} , κ | Block, FCM | RUO | NA/LE | 0.5 mg | ≤ 0.001 ng/μg | BDB553369 |
| CD40 | Ms | 3/23 | Rat (Lou) IgG _{2a} , κ | Cost, FCM | RUO | NA/LE | 0.5 mg | ≤ 0.001 ng/μg | BDB553787 |
| | Ms, Rat | HM40-3 | Armenian Hamster IgM, κ | Block, Cost, FCM | RUO | NA/LE | 0.5 mg | ≤ 0.01 ng/μg | BDB553721 |
| CD44 (Pgp-1, H-CAM, Ly-24) | Ms | IM7 | Rat IgG _{2b} , κ | Block, Cyt, FCM | RUO | NA/LE | 0.5 mg | ≤ 0.001 ng/μg | BDB553130 |
| | | KM114 | Rat (LOU/MN) IgG ₁ , κ | Block, FCM | RUO | NA/LE | 0.5 mg | ≤ 0.001 ng/μg | BDB553724 |
| CD45R/B220 | Ms, Hu | RA3-6B2 | Rat IgG _{2a} , κ | Block, Cost, FCM | RUO | NA/LE | 0.5 mg | ≤ 0.001 ng/μg | BDB553083 |
| CD48 (BCM1) | Ms | HM48-1 | Armenian Hamster IgG1, λ.3 | Block, Cost, FCM, IP, WB | RUO | NA/LE | 0.5 mg | ≤ 0.001 ng/μg | BDB553682 |
| CD49a (Integrin α ₁ chain) | Ms, Rat | Ha31/8 | Armenian Hamster IgG2, λ.1 | Block, FCM | RUO | NA/LE | 0.5 mg | ≤ 0.001 ng/μg | BDB555000 |
| CD49b (Integrin α ₂ chain) | Ms | HMα2 | Armenian Hamster IgG1, κ | Block, FCM | RUO | NA/LE | 0.5 mg | ≤ 0.01 ng/μg | BDB557017 |
| CD49d (Integrin α ₄ chain) | Ms | 9C10 (MRF4.B) | Rat (Lewis) IgG _{2a} , κ | Block, FCM | RUO | NA/LE | 0.5 mg | ≤ 0.001 ng/μg | BDB553313 |
| | | R1-2 | Rat (Fischer) IgG _{2b} , κ | Block, FCM | RUO | NA/LE | 0.5 mg | ≤ 0.001 ng/μg | BDB553153 |
| CD49e (Integrin α ₅ chain) | Ms | 5H10-27 | Rat (Lewis) IgG _{2a} , κ | Block, Cost, FCM | RUO | NA/LE | 0.5 mg | ≤ 0.001 ng/μg | BDB553318 |
| CD51 (Integrin α _v chain) | Ms | H9.2B8 | Armenian Hamster IgG3, λ.3 | Block, FCM | RUO | NA/LE | 0.5 mg | ≤ 0.001 ng/μg | BDB553241 |
| | | RMV-7 | Rat (Sprague-Dawley) IgG ₁ , κ | Block, FCM | RUO | NA/LE | 0.5 mg | ≤ 0.001 ng/μg | BDB552299 |
| CD54 (ICAM-1) | Ms | 3E2 | Armenian Hamster IgG1, κ | Block, FCM | RUO | NA/LE | 0.5 mg | ≤ 0.001 ng/μg | BDB553249 |
| CD61 (Integrin β ₃ chain) | Ms, Rat | 2C9.G2 | Armenian Hamster IgG1, κ | Block, FCM | RUO | NA/LE | 0.5 mg | ≤ 0.001 ng/μg | BDB553343 |
| CD62E (E-selectin, ELAM-1) | Ms | 10E9.6 | Rat (Lewis) IgG _{2a} , κ | Block, FCM | RUO | NA/LE | 0.5 mg | ≤ 0.001 ng/μg | BDB553748 |
| CD62L (L-selectin, LECAM-1, Ly-22) | Ms | MEL-14 | Rat (Fischer) IgG _{2a} , κ | Block, Cyt, FCM | RUO | NA/LE | 0.5 mg | ≤ 0.01 ng/μg | BDB553147 |
| CD62P (P-selectin) | Ms | RB40.34 | Rat (Lewis) IgG ₁ , λ | Block, FCM | RUO | NA/LE | 0.5 mg | ≤ 0.001 ng/μg | BDB553741 |
| CD80 (B7-1) | Ms, Dog | 16-10A1 | Armenian Hamster IgG2, κ | Block, FCM | RUO | NA/LE | 0.5 mg | ≤ 0.001 ng/μg | BDB553765 |
| | | 1G10 | Rat IgG _{2a} , κ | Block, FCM | RUO | NA/LE | 0.5 mg | ≤ 0.01 ng/μg | BDB553367 |
| CD86 (B7-2) | Ms | GL1 | Rat (Louvain) IgG _{2a} , κ | Block, FCM | RUO | NA/LE | 0.5 mg | ≤ 0.001 ng/μg | BDB553688 |
| | | PO3 | Rat (SD) IgG _{2b} , κ | Block, FCM, IP | RUO | NA/LE | 0.5 mg | ≤ 0.001 ng/μg | BDB553838 |
| CD90 (Thy-1) | Ms | G7 | Rat (Lewis) IgG _{2c} , κ | Cost, FCM | RUO | NA/LE | 0.5 mg | ≤ 0.001 ng/μg | BDB553015 |
| CD90.2 (Thy-1.2) | Ms | 30-H12 | Rat (LOU/WS1/M) IgG _{2b} , κ | Cost, Cyt, FCM | RUO | NA/LE | 0.5 mg | ≤ 0.001 ng/μg | BDB553008 |
| CD95 (Fas/APO-1) | Ms | Jo2 | Armenian Hamster IgG2, λ.2 | FA, FCM, IP | RUO | NA/LE | 0.5 mg | ≤ 0.001 ng/μg | BDB554254 |
| CD102 (ICAM-2) | Ms | 3C4 (mIC2/4) | Rat (Lewis) IgG _{2a} , κ | Block, FCM | RUO | NA/LE | 0.5 mg | ≤ 0.001 ng/μg | BDB553325 |
| CD103 (Integrin α _{IEL} chain) | Ms | M290 | Rat (LOU/c) IgG _{2a} , κ | Block, Cost, FCM, IHC(Fr), IP | RUO | NA/LE | 0.5 mg | ≤ 0.001 ng/μg | BDB553699 |
| CD106 (VCAM-1) | Ms | 429 (MVCAM.A) | Rat (Lewis) IgG _{2a} , κ | Block, FCM | RUO | NA/LE | 0.5 mg | ≤ 0.01 ng/μg | BDB553329 |
| CD117 (c-Kit) | Ms | ACK45 | Rat IgG _{2b} , κ | Block, FCM | RUO | NA/LE | 0.5 mg | ≤ 0.01 ng/μg | BDB553867 |
| CD120a (TNF Receptor, Type I/p55) | Ms | 55R-170 | Armenian Hamster IgG1, κ | Block | RUO | NA/LE | 0.25 mg | ≤ 0.001 ng/μg | BDB557535 |
| CD120b (TNF Receptor, Type II/p75) | Ms | TR75-54 | Armenian Hamster IgG1, λ.3 | Block | RUO | NA/LE | 0.25 mg | ≤ 0.001 ng/μg | BDB557534 |
| CD121a (IL-1 Receptor, Type I/p80) | Ms | 35F5 | Rat IgG ₁ , κ | Block, FCM, IP, WB | RUO | NA/LE | 0.5 mg | ≤ 0.001 ng/μg | BDB553693 |

NA/LE Reagents Product List

Anti-Mouse (continued)

| DESCRIPTION | REACT | CLONE | ISOTYPE | APPS | REG | FORMAT | SIZE | ENDOTOXIN | CAT. NO. |
|--|---------|---------------|--|---------------------|-----|--------|---------|--------------------------|------------------|
| CD122 (IL-2 and IL-15 Receptor β chain) | Ms | TM- β 1 | Rat (Sprague-Dawley) IgG _{2b} , κ | Block, FCM, IP | RUO | NA/LE | 0.5 mg | \leq 0.001 ng/ μ g | BDB553359 |
| CD124 (IL-4 Receptor α chain) | Ms | mIL4R-M1 | Rat IgG _{2a} , κ | Neu | RUO | NA/LE | 0.5 mg | \leq 0.001 ng/ μ g | BDB552288 |
| CD126 (IL-6 Receptor α chain) | Ms | D7715A7 | Rat IgG _{2b} , κ | Block | RUO | NA/LE | 0.5 mg | \leq 0.01 ng/ μ g | BDB554459 |
| CD127 (IL-7 Receptor α chain) | Ms | SB/14 | Rat IgG _{2a} , κ | Block, FCM | RUO | NA/LE | 0.5 mg | \leq 0.001 ng/ μ g | BDB550426 |
| CD132 (Common γ chain, γ_c) | Ms | 4G3 | Rat (Lewis) IgG _{2a} , κ | Block | RUO | NA/LE | 0.5 mg | \leq 0.001 ng/ μ g | BDB554454 |
| | | TUGm2 | Rat (Wistar) IgG _{2a} , κ | Block | RUO | NA/LE | 0.5 mg | \leq 0.001 ng/ μ g | BDB554469 |
| CD137 (4-1BB, Ly-63) | Ms | 1AH2 | Rat (Sprague-Dawley) IgG ₁ , κ | Cost, FCM | RUO | NA/LE | 0.5 mg | \leq 0.001 ng/ μ g | BDB553831 |
| CD152 (CTLA-4) | Ms | 9H10 | Syrian Hamster IgG2, κ | Block, Cost, FCM | RUO | NA/LE | 0.5 mg | \leq 0.001 ng/ μ g | BDB555278 |
| | | UC10-4F10-11 | Armenian Hamster IgG1, κ | Block, Cost, FCM | RUO | NA/LE | 0.5 mg | \leq 0.01 ng/ μ g | BDB553718 |
| CD154 (CD40 Ligand, gp39) | Ms | MR1 | Armenian Hamster IgG3, κ | Block, FCM | RUO | NA/LE | 0.5 mg | \leq 0.001 ng/ μ g | BDB553655 |
| CD162 (PSGL-1) | Ms | 4RA10 | Rat (Lewis) IgG ₁ , κ | Block, FCM, IP, WB | RUO | NA/LE | 0.5 mg | \leq 0.001 ng/ μ g | BDB557787 |
| CD178 (Fas Ligand, CD95 Ligand) | Ms, Rat | MFL3 | Armenian Hamster IgG1, κ | Block, FCM | RUO | NA/LE | 0.5 mg | \leq 0.001 ng/ μ g | BDB555290 |
| | | MFL4 | Armenian Hamster IgG3, κ | Block, FCM | RUO | NA/LE | 0.5 mg | \leq 0.01 ng/ μ g | BDB555021 |
| CD210 (IL-10 Receptor) | Ms | 1B1.3a | Rat IgG ₁ , κ | Block | RUO | NA/LE | 0.5 mg | \leq 0.001 ng/ μ g | BDB550012 |
| CD223 (LAG3) | Ms | C9B7W | Rat (LEW) IgG ₁ , κ | Block, FCM | RUO | NA/LE | 0.5 mg | \leq 0.001 ng/ μ g | BDB552379 |
| CD278 (ICOS) | Ms | 7E.17G9 | Rat IgG _{2b} , κ | Block, FCM | RUO | NA/LE | 0.5 mg | \leq 0.01 ng/ μ g | BDB552437 |
| CSF-1 | Ms | 5A1 | Rat IgG ₁ , κ | Neu | RUO | NA/LE | 0.5 mg | \leq 0.001 ng/ μ g | BDB557858 |
| CTLA-4 - IgG Fusion Protein (Non-Cytolytic) | Ms | | | Block | RUO | NA/LE | 0.5 mg | \leq 0.01 ng/ μ g | BDB552133 |
| Epo | Ms | B34-1 | Rat IgG ₁ | Neu, WB | RUO | NA/LE | 0.5 mg | \leq 0.001 ng/ μ g | BDB554651 |
| GITR | Ms | DTA-1 | Rat (Wistar) IgG _{2a} , λ | Block, Cost, FCM | RUO | NA/LE | 0.5 mg | \leq 0.001 ng/ μ g | BDB558213 |
| GM-CSF | Ms | MP1-22E9 | Rat IgG _{2a} | Neu | RUO | NA/LE | 0.5 mg | \leq 0.001 ng/ μ g | BDB554403 |
| H-2D^b | Ms | 28-14-8 | Mouse (C3H/HeJ) IgG _{2a} , κ | Block, Cyt, FCM | RUO | NA/LE | 0.5 mg | \leq 0.001 ng/ μ g | BDB559579 |
| IFN-α/β Receptor 1 | Ms | MAR1-5A3 | Mouse IgG1, κ | Block, FCM | RUO | NA/LE | 0.5 mg | \leq 0.001 ng/ μ g | BDB561183 |
| IFN-γ | Ms | H22 | Armenian Hamster IgG1, κ | Neu | RUO | NA/LE | 0.25 mg | \leq 0.01 ng/ μ g | BDB557530 |
| | | R4-6A2 | Rat IgG ₁ | Neu | RUO | NA/LE | 0.5 mg | \leq 0.001 ng/ μ g | BDB554430 |
| | | XMG1.2 | Rat IgG ₁ , κ | Neu | RUO | NA/LE | 0.5 mg | \leq 0.001 ng/ μ g | BDB554408 |
| IL-1β | Ms | B122 | Armenian Hamster IgG1, λ 1 | Neu | RUO | NA/LE | 0.25 mg | \leq 0.01 ng/ μ g | BDB557539 |
| IL-2 | Ms | S4B6 | Rat IgG _{2a} | FA, Neu | RUO | NA/LE | 0.5 mg | \leq 0.001 ng/ μ g | BDB554375 |
| IL-3 | Ms | MP2-8F8 | Rat IgG ₁ | Neu | RUO | NA/LE | 0.5 mg | \leq 0.001 ng/ μ g | BDB554379 |
| IL-4 | Ms | 11B11 | Rat IgG ₁ | Neu | RUO | NA/LE | 0.5 mg | \leq 0.001 ng/ μ g | BDB554432 |
| | | BVD4-1D11 | Rat IgG _{2b} | Neu | RUO | NA/LE | 0.5 mg | \leq 0.001 ng/ μ g | BDB554385 |
| IL-5 | Ms, Hu | TRFK5 | Rat IgG ₁ | Neu | RUO | NA/LE | 0.5 mg | \leq 0.001 ng/ μ g | BDB554391 |
| IL-6 | Ms | MP5-20F3 | Rat IgG ₁ | Neu | RUO | NA/LE | 0.5 mg | \leq 0.001 ng/ μ g | BDB554398 |
| IL-9 | Ms | D9302C12 | Armenian Hamster IgG2, κ | Neu | RUO | NA/LE | 0.5 mg | \leq 0.001 ng/ μ g | BDB554472 |
| IL-10 | Ms | JE55-16E3 | Rat IgG _{2b} | Neu | RUO | NA/LE | 0.5 mg | \leq 0.001 ng/ μ g | BDB554463 |
| | | JE55-2A5 | Rat IgG ₁ , κ | Neu | RUO | NA/LE | 0.5 mg | \leq 0.001 ng/ μ g | BDB554421 |
| IL-12 (p40/p70) | Ms | C17.8 | Rat IgG _{2a} | Neu | RUO | NA/LE | 0.5 mg | \leq 0.001 ng/ μ g | BDB554475 |
| IL-17A | Ms | TC11-18H10 | Rat IgG ₁ , κ | IC/FCM, Neu, WB | RUO | NA/LE | 0.5 mg | \leq 0.001 ng/ μ g | BDB560268 |
| IL-18 Receptor (β chain) | Ms | TC30-28E3 | Rat IgG _{2a} , λ | Neu | RUO | NA/LE | 0.5 mg | \leq 0.001 ng/ μ g | BDB552422 |
| Integrin β, chain | Ms, Hu | FIB27 | Rat (Fischer) IgG _{2a} , κ | Block, FCM | RUO | NA/LE | 0.5 mg | \leq 0.001 ng/ μ g | BDB553812 |
| LPAM-1 (Integrin $\alpha_4\beta_7$ complex) | Ms | DATK32 | Rat (Fischer) IgG _{2a} , κ | Block, FCM | RUO | NA/LE | 0.5 mg | \leq 0.01 ng/ μ g | BDB553809 |
| Ly-6G and Ly-6C (Gr-1) | Ms | RB6-8C5 | Rat IgG _{2b} , κ | Cyt, FCM | RUO | NA/LE | 0.5 mg | \leq 0.001 ng/ μ g | BDB553122 |
| Ly-49C and Ly-49I | Ms | 5E6 | Mouse (129/J) IgG _{2a} , κ | Block, Cyt, FCM, IP | RUO | NA/LE | 0.5 mg | \leq 0.001 ng/ μ g | BDB553273 |
| MAdCAM-1 | Ms | MECA-367 | Rat (Wistar) IgG _{2a} , κ | Block, FCM | RUO | NA/LE | 0.5 mg | \leq 0.01 ng/ μ g | BDB553805 |
| MCP-1 | Ms, Rat | 2H5 | Armenian Hamster IgG1, κ | Neu | RUO | NA/LE | 0.5 mg | \leq 0.001 ng/ μ g | BDB554440 |
| NK-1.1 (NKR-P1B and NKR-P1C) | Ms | PK136 | Mouse (C3H x BALB/C) IgG _{2a} , κ | Cost, Cyt, FCM | RUO | NA/LE | 0.5 mg | \leq 0.01 ng/ μ g | BDB553161 |
| Qa-1^b | Ms | 6A8.6F10.1A6 | Mouse (B6-T1a ^b , Qa-1 ^b) IgG ₁ , κ | Block, FCM, IP, WB | RUO | NA/LE | 0.5 mg | \leq 0.001 ng/ μ g | BDB559827 |
| TCR β chain | Ms | H57-597 | Armenian Hamster IgG2, λ 1 | Cost, Cyt, FCM | RUO | NA/LE | 0.5 mg | \leq 0.001 ng/ μ g | BDB553166 |
| TCR $\gamma\delta$ | Ms | UC7-13D5 | Armenian Hamster IgG3, κ | Cost, Cyt, FCM | RUO | NA/LE | 0.5 mg | \leq 0.001 ng/ μ g | BDB553181 |
| TER-119/Erythroid cells (Ly-76) | Ms | TER-119 | Rat (Wistar) IgG _{2a} , κ | FCM | RUO | NA/LE | 0.5 mg | \leq 0.001 ng/ μ g | BDB553669 |
| TNF | Ms, Rat | MP6-XT3 | Rat IgG ₁ | Neu | RUO | NA/LE | 0.5 mg | \leq 0.001 ng/ μ g | BDB554414 |
| | | G281-2626 | Rat IgG ₁ | Neu | RUO | NA/LE | 0.5 mg | \leq 0.001 ng/ μ g | BDB554640 |
| | | TN3-19.12 | Armenian Hamster IgG1, λ 1 | IP, Neu, WB | RUO | NA/LE | 0.5 mg | \leq 0.01 ng/ μ g | BDB557370 |

NA/LE Reagents Product List

Anti-NHP

| DESCRIPTION | REACT | CLONE | ISOTYPE | APPS | REG | FORMAT | SIZE | ENDOTOXIN | CAT. NO. |
|-------------|----------------|-------|----------------------------|------|-----|--------|--------|---------------|-----------|
| CD3 | Bab, Cyno, Rhe | SP34 | Mouse IgG ₃ , λ | FCM | RUO | NA/LE | 0.5 mg | ≤ 0.001 ng/μg | BDB557052 |

Anti-Rat

| DESCRIPTION | REACT | CLONE | ISOTYPE | APPS | REG | FORMAT | SIZE | ENDOTOXIN | CAT. NO. |
|---------------------------------------|----------|-----------|--------------------------------------|------------------------|-----|--------|--------|---------------|-----------|
| CD3 | Rat | G4.18 | Mouse (BALB/c) IgG ₃ , κ | Block, Cost, Cyt, FCM | RUO | NA/LE | 0.5 mg | ≤ 0.001 ng/μg | BDB554829 |
| CD11b/c | Rat | OX-42 | Mouse (BALB/c) IgG _{2b} , κ | Block, FCM | RUO | NA/LE | 0.5 mg | ≤ 0.01 ng/μg | BDB554858 |
| CD18 (Integrin β ₂ chain) | Rat | WT.3 | Mouse (BALB/c) IgG ₁ , κ | Block, FCM | RUO | NA/LE | 0.5 mg | ≤ 0.001 ng/μg | BDB554976 |
| CD27 | Rat, Ms | LG.3A10 | Armenian Hamster IgG1, κ | Cost, FCM, IHC(Fr), IP | RUO | NA/LE | 0.5 mg | ≤ 0.001 ng/μg | BDB553777 |
| CD28 | Rat | JJ316 | Mouse (BALB/c) IgG ₁ , κ | Cost, FCM, IP | RUO | NA/LE | 0.5 mg | ≤ 0.01 ng/μg | BDB554992 |
| | | JJ319 | Mouse (BALB/c) IgG ₁ , κ | Cost, FCM, IP | RUO | NA/LE | 0.5 mg | ≤ 0.001 ng/μg | BDB554993 |
| CD29 (Integrin β ₁ chain) | Rat, Ms | Ha2/5 | Armenian Hamster IgM, κ | Block, FCM | RUO | NA/LE | 0.5 mg | ≤ 0.001 ng/μg | BDB555002 |
| CD31 (PECAM-1) | Rat, Pig | TLD-3A12 | Mouse (BALB/c) IgG ₁ , κ | Block, FCM | RUO | NA/LE | 0.5 mg | ≤ 0.01 ng/μg | BDB555024 |
| CD32 (FcγII Receptor) | Rat | D34-485 | Mouse (BALB/c) IgG ₁ , κ | Block, FCM | RUO | NA/LE | 0.5 mg | ≤ 0.001 ng/μg | BDB550273 |
| CD40 | Rat, Ms | HM40-3 | Armenian Hamster IgM, κ | Block, Cost, FCM | RUO | NA/LE | 0.5 mg | ≤ 0.01 ng/μg | BDB553721 |
| CD49a (Integrin α ₁ chain) | Rat, Ms | Ha31/8 | Armenian Hamster IgG2, λ1 | Block, FCM | RUO | NA/LE | 0.5 mg | ≤ 0.001 ng/μg | BDB555000 |
| CD54 (ICAM-1) | Rat | 1A29 | Mouse (BALB/c) IgG ₁ , κ | Block, FCM | RUO | NA/LE | 0.5 mg | ≤ 0.001 ng/μg | BDB554966 |
| CD61 (Integrin β ₃ chain) | Rat, Ms | 2C9.G2 | Armenian Hamster IgG1, κ | Block, FCM | RUO | NA/LE | 0.5 mg | ≤ 0.001 ng/μg | BDB553343 |
| | | F11 | Mouse (BALB/c) IgG ₁ , κ | Block, FCM, IP | RUO | NA/LE | 0.5 mg | ≤ 0.001 ng/μg | BDB554950 |
| CD178 (Fas Ligand, CD95 Ligand) | Rat, Ms | MFL4 | Armenian Hamster IgG3, κ | Block, FCM | RUO | NA/LE | 0.5 mg | ≤ 0.01 ng/μg | BDB555021 |
| MCP-1 | Rat, Ms | 2H5 | Armenian Hamster IgG1, κ | Neu | RUO | NA/LE | 0.5 mg | ≤ 0.001 ng/μg | BDB554440 |
| TCR αβ | Rat | R73 | Mouse (BALB/c) IgG ₁ , κ | Cost, Cyt, FCM | RUO | NA/LE | 0.5 mg | ≤ 0.001 ng/μg | BDB554910 |
| TNF | Rat, Ms | TN3-19.12 | Armenian Hamster IgG1, λ 1 | IP, Neu, WB | RUO | NA/LE | 0.5 mg | ≤ 0.01 ng/μg | BDB557370 |

NA/LE Reagents Product List

Isotype Controls

| DESCRIPTION | CLONE | ISOTYPE | APPS | REG | FORMAT | SIZE | ENDOTOXIN | CAT. NO. |
|---|-----------|--------------------------------------|-------------------------------------|-----|--------|--------|---------------|-----------|
| Hamster IgG1, κ (anti-TNP) | A19-3 | Armenian Hamster IgG1, κ | Block, Cost, Cyt, ELISA Std. | RUO | NA/LE | 0.5 mg | ≤ 0.001 ng/μg | BDB553968 |
| Hamster IgG1, λ | G235-2356 | Armenian Hamster IgG1, λ 1 | Block, Cost, Cyt, ELISA Std., ICtrl | RUO | NA/LE | 0.5 mg | ≤ 0.001 ng/μg | BDB553950 |
| | | | FA, ICtrl | RUO | NA/LE | 0.5 mg | ≤ 0.001 ng/μg | BDB554709 |
| Hamster IgG2, λ (anti-KLH) | Ha4/8 | Armenian Hamster IgG2, λ1 | Block, Cost, Cyt | RUO | NA/LE | 0.5 mg | ≤ 0.001 ng/μg | BDB553961 |
| Hamster IgG2, κ | B81-3 | Armenian Hamster IgG2, κ | Block, Cost, Cyt, ELISA Std. | RUO | NA/LE | 0.5 mg | ≤ 0.001 ng/μg | BDB559339 |
| Hamster IgG3, λ (anti-TNP) | A19-4 | Armenian Hamster IgG3, λ1 | Block, Cost, Cyt, ELISA Std. | RUO | NA/LE | 0.5 mg | ≤ 0.01 ng/μg | BDB553976 |
| Hamster IgM, λ (anti-TNP) | G235-1 | Armenian Hamster IgM, λ1 | ELISA Std. | RUO | NA/LE | 0.5 mg | ≤ 0.001 ng/μg | BDB553957 |
| Mouse IgG ₁ , κ (anti-TNP) | 107.3 | Mouse (BALB/c) IgG ₁ , κ | FA, ICtrl | RUO | NA/LE | 0.5 mg | ≤ 0.001 ng/μg | BDB554721 |
| | | | Block, Cost, Cyt, ELISA | RUO | NA/LE | 0.5 mg | ≤ 0.001 ng/μg | BDB553447 |
| Mouse IgG _{2a} , κ | G155-178 | Mouse (BALB/c) IgG _{2a} , κ | FA, ICtrl | RUO | NA/LE | 0.5 mg | ≤ 0.001 ng/μg | BDB554645 |
| | | | Block, Cost, Cyt, ELISA | RUO | NA/LE | 0.5 mg | ≤ 0.001 ng/μg | BDB553453 |
| Mouse IgG _{2b} , κ | MPC-11 | Mouse (BALB/c) IgG _{2b} , κ | Block, Cost, Cyt, ELISA, FA | RUO | NA/LE | 0.5 mg | ≤ 0.01 ng/μg | BDB559530 |
| Mouse IgG ₃ , κ (anti-Fructosan) | J606 | Mouse (BALB/c) IgG ₃ , κ | Block, Cost, Cyt, ELISA | RUO | NA/LE | 0.5 mg | ≤ 0.001 ng/μg | BDB553466 |
| Rat IgG ₁ , λ | A110-1 | Rat (LOU) IgG ₁ , λ | Block, Cost, Cyt, ELISA Std., ICtrl | RUO | NA/LE | 0.5 mg | ≤ 0.001 ng/μg | BDB559157 |
| Rat IgG ₁ , κ | R3-34 | Rat IgG ₁ , κ | FA, ICtrl | RUO | NA/LE | 0.5 mg | ≤ 0.001 ng/μg | BDB554682 |
| | | | Block, Cost, Cyt, ELISA | RUO | NA/LE | 0.5 mg | ≤ 0.001 ng/μg | BDB553921 |
| Rat IgG _{2a} , κ | R35-95 | Rat (LOU) IgG _{2a} , κ | FA, ICtrl | RUO | NA/LE | 0.5 mg | ≤ 0.001 ng/μg | BDB554687 |
| | | | Block, Cost, Cyt, ELISA | RUO | NA/LE | 0.5 mg | ≤ 0.001 ng/μg | BDB553926 |
| | | | FCM | RUO | NA/LE | 0.5 mg | ≤ 0.001 ng/μg | BDB555840 |
| Rat IgG _{2b} , κ | R35-38 | Rat IgG _{2b} , κ | FCM | RUO | NA/LE | 0.5 mg | ≤ 0.001 ng/μg | BDB555845 |
| | | | FA, ICtrl | RUO | NA/LE | 0.5 mg | ≤ 0.001 ng/μg | BDB556968 |
| Rat IgG _{2c} , κ | A95-1 | Rat (LOU) IgG _{2c} , κ | Block, Cost, Cyt, ELISA | RUO | NA/LE | 0.5 mg | ≤ 0.001 ng/μg | BDB553985 |
| | | | Block, Cost, Cyt, ELISA | RUO | NA/LE | 0.5 mg | ≤ 0.01 ng/μg | BDB553981 |

For Research Use Only. Not for use in diagnostic or therapeutic procedures.
BD, BD Logo and all other trademarks are property of Becton, Dickinson and Company. © 2012 BD
23-13096-01

To order products through Fisher Scientific, please add BDB to the beginning of each part number listed.

www.fishersci.com/bdbiosciences



For technical assistance, contact BD Biosciences.
Toll free: 877-232-8995
Email: ResearchApplications@bd.com



For customer service, call 1-800-766-7000.
To fax an order, use 1-800-926-1166.
To order online: www.fishersci.com