

..... Inspiring Innovation

Cell Culture

Enhance Workflows from Seeding to Imaging



..... Inspiring Innovation

Power Your Research

Find products to support and accelerate your cell culture workflows from initial seeding to the imaging that enables your analysis. The Fisher Scientific channel offers media, consumables, bioreagents, instruments, and more to help you every step of the way.

gibco



Agilent



BD

**Millipore
Sigma**

Trademarks: Agilent, BD Accuri, BD Horizon RealYellow, BD Rhapsody, BenchStable, BioTek, CellSTACK, Corning, CSampler, EasYDish, EasYFlask, Fisherbrand, Gen5, Gibco, GlutaMAX, HYPERFlask, HYPERStack, Invitrogen, Lionheart, Lipofectamine, MicroWell, Millex, MilliporeSigma, MultiFlo, Nunc, One Shot, Scepter, StemScale, Stericup, Steriflip, Thermo Scientific, TrypLE



Cell Culture Simplified

Whether you are culturing or modifying cells, Thermo Scientific, Invitrogen, and Gibco products provide the quality, consistency, and performance you need from discovery to commercialization.



Gibco

Cell Culture Media and Reagents

From basic formulations to new innovations, Gibco products enable you to get it right the first time.

- Media are designed to support growth and maintenance of mammalian and other cell lines
- BenchStable media can be stored at room temperature to save warming time and cold storage space
- Supplements include balanced salt solutions, cell dissociation reagents, antibiotics, and more for reliable reproducibility
- Ready-to-use products and powdered and concentrated liquid formulations can fit your experimental setup and budget
- StemScale PSC suspension media deliver 5- to 10-fold expansion per passage, a simplified workflow, and compatibility with multiple cell lines



Description	Quantity	Cat. No.
Gibco Human Plasma-Like Medium (HPLM)	500 mL	A4899101
Gibco BenchStable DMEM	500 mL	A4192101
Gibco TrypLE Select Enzyme (1X), No Phenol Red	500 mL	12-604-021
Gibco TrypLE Express Enzyme (1X), with Phenol Red	500 mL	12-605-028
Gibco DMEM GlutaMAX Low-Glucose Supplement with Pyruvate	500 mL	10-567-014
Invitrogen Lipofectamine 3000	0.1 mL	L3000001
Gibco StemScale PSC Suspension Medium	1 L	A4965001

Thermo Scientific

Nunc Cell Culture Plastics

Nunc cell culture plastics are manufactured using only high-quality raw materials that comply with USP Class VI testing. They're tested with Gibco media to optimize cell growth across multiple cell lines.



Description	Quantity	Cat. No.
Nunc EasYDish Cell Culture Dishes	500/Case	12-600-000
Nunc EasYFlask Cell Culture Flasks	100/Case	12-565-349
Nunc Conical Sterile Polypropylene Centrifuge Tubes, 15 mL	500/Case	12-565-268
Nunc MicroWell 96-Well Microplates	50/Case	12-565-66
Nunc Serological Pipettes, 5 mL	200/Case	12-567-618

Gibco

Fetal Bovine and Other Sera

Reduce unknowns in your work and move quickly toward your goals whether you need sera with the least viral risk, the lowest endotoxin levels, or qualified for specialty applications and assays. Find differentiated workflow solutions from specialty serum to innovative packaging like the aliquot-free Gibco One Shot Fetal Bovine Serum in 50 mL bottles.



Description	Quantity	Cat. No.
Gibco Premium Plus Fetal Bovine Serum	500 mL	A4766801
Gibco Fetal Bovine Serum, Tet System Approved, U.S. Origin	500 mL	A4736201
Gibco One Shot Qualified Fetal Bovine Serum, U.S. Origin	50 mL	A3160501
Gibco One Shot Qualified Fetal Bovine Serum, USDA-Approved Regions	50 mL	A3160602



**Years of
loving your
cells**

Celebrating 60 Years of Defining Moments in Cell Culture

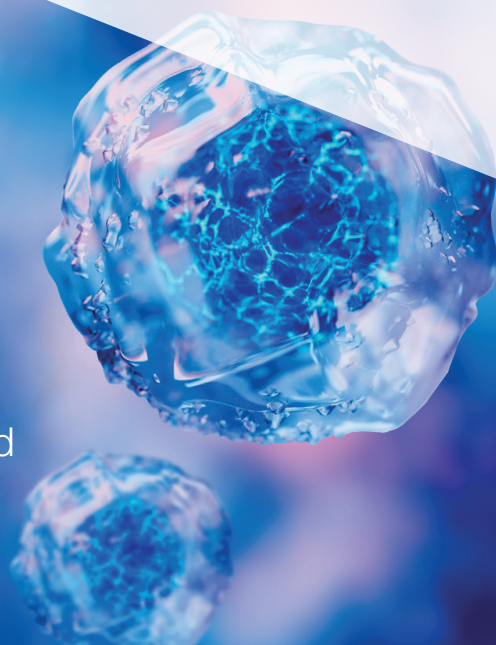
Gibco products have been empowering progress in life sciences around the world Since 1962. From breakthrough discoveries to moments of inspiration. From the lives saved to the lives touched. These moments are present in every scientist's journey, and we are proud to celebrate them.

Visit thermofisher.com/gibco60th to join the celebration.

Visit fishersci.com/gibco to learn more about Gibco products available through the Fisher Scientific channel.

Filtration Flexibility and Counting Efficiency

MilliporeSigma filtration solutions feature high-performance membranes available in a wide variety of formats, including syringe filters, vacuum-driven filter units, bottle top filters, and more. Automated, handheld cell counters deliver accurate counts in seconds.



MilliporeSigma Millex Syringe Filters

Ready to use for sterilizing and clarifying solutions.

- Larger 33 mm housing for increased flow rates and throughput
- 50% less hold volume than traditional syringe filters to maximize sample recovery
- Color coded by membrane type



Visit fishersci.com/milliporesigma to explore filtration solutions.

MilliporeSigma Steriflip Centrifuge Tube Filter Units

Sterile, disposable filter units for cell isolation compatible with 50 mL centrifuge tubes, Steriflip filters eliminate the liquid transfer step by integrating directly into the sample tube.

Description	Membrane	Pore Size	Quantity	Cat. No.
Steriflip Filter Units	Nylon Mesh	20 µm	25/Pack	SCNY00020
Steriflip Filter Units	Nylon Net	40 µm	25/Pack	SCNY00040
Steriflip Filter Units	Nylon Mesh	60 µm	25/Pack	SCNY00060
Steriflip Filter Units	Nylon Net	100 µm	25/Pack	SCNY00100
Steriflip Funnel Attachment, Nonsterile	NA	NA	25/Pack	SC50FL025
Steriflip Sterile Disposable Vacuum Filter Units	PES	0.22 µm	25/Pack	SCGP00525
Steriflip Sterile Disposable Vacuum Filter Units	PVDF	0.22 µm	25/Pack	SE1M179M6
Steriflip Sterile Disposable Vacuum Filter Units	PVDF	0.45 µm	25/Pack	SE1M003M00



MilliporeSigma

Stericup Quick Release Filters and Receiver Flasks

These vacuum filtration devices feature ergonomic designs to enhance usability and streamline filtration while safeguarding vital cell cultures.

Description	Membrane	Pore Size	Filter Capacity	Receiver Capacity	Quantity	Cat. No.
Receiver Flasks	NA	NA	NA	1,000 mL	12/Pack	S200B10RE
GP Bottle Top Filter Systems	PES	0.22 µm	150 mL	150 mL	12/Pack	S2GPU01RE
GV Bottle Top Filter Systems	PVDF	0.22 µm	150 mL	150 mL	12/Pack	S2GVU01RE
HV Bottle Top Filter Systems	PVDF	0.45 µm	150 mL	150 mL	12/Pack	S2HVU01RE
VP Bottle Top Filter Systems	PES	0.1 µm	250 mL	250 mL	12/Pack	S2VPU02RE



MilliporeSigma

Stericup E Eco-Friendly Filters

Stericup E filters attach directly to commercial media bottles to eliminate the plastic filter funnel. They can lower plastic waste by up to 48% and reduce packaging material, hazardous waste, transportation requirements, and storage space.

Description	Membrane	Pore Size	Capacity	Outlet	Quantity	Cat. No.
Stericup E-GP Vacuum Filtration Systems	PES	0.22 µm	500 mL	38 mm	12/Case	SEGPU0538
	PES	0.22 µm	500 mL	45 mm	12/Case	SEGPU0545
	PES	0.22 µm	1,000 mL	38 mm	12/Case	SEGPU1138
	PES	0.22 µm	1,000 mL	45 mm	12/Case	SEGPU1145



MilliporeSigma

Scepter 3.0 Cell Counter

The Scepter 3.0 Cell Counter is currently the only portable and handheld automated cell counter. With its microfabricated, precision-engineered sensor, it assesses, calculates, and delivers accurate and reliable counts in less than 30 seconds.

Description	Quantity	Cat. No.
Scepter 3.0 Cell Counter Kit for Cells from 5 to 15 µm	Each	PHCC340KIT
Scepter 3.0 Cell Counter Kit for Cells from 8 to 25 µm	Each	PHCC360KIT
40 µm Sensors for Scepter 3.0 Cell Counters	50/Pack	PHCC340050
60 µm Sensors for Scepter 3.0 Cell Counters	50/Pack	PHCC360050
Scepter 3.0 Test Bead Vial	Each	PHCC3BEADS
Scepter 3.0 Charging Station	Each	PHCC3CHARG
Scepter 3.0 Mounting Kit	Each	PHCC3WKIT



Get Extra Sensors with Cell Counter Kit Purchase

When you purchase a MilliporeSigma Scepter 3.0 Portable Automated Cell Counter Kit, you'll get an extra pack of 50 sensors at no additional cost.

Visit fishersci.com/scepter-sensor-offer to learn more and save.

Restrictions apply.

Improve Cellular Analysis with Modular Automation

Agilent BioTek automated microscopes and multimode reagent dispensers combine the speed and efficiency of automation, the versatility and value of modular design, and the power of innovative technology.



Agilent BioTek

Lionheart FX Automated Microscope

Small, Powerful, and Versatile

Support a variety of imaging applications and fixed and live cell assay workflows such as cell migration and invasion assays, immunofluorescence, phenotypic assays, and histology workflows.

- Up to 60x air in addition to 60x and 100x oil immersion magnification
- Fluorescence, brightfield, color brightfield, and phase contrast imaging channels
- Optional environmental control cover provides incubation to 40°C, CO₂/O₂ control
- Optional humidity chamber for long-term live cell imaging
- Optional dual reagent injector for rapid kinetic assays

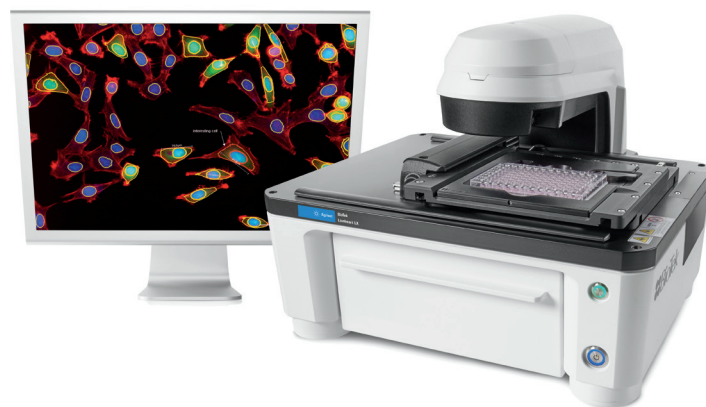


Description	Cat. No.
Lionheart FX Automated Microscope	BTLFXWSN
Lionheart FX Environment Control Cover	BT1450009
Lionheart FX Humidity Chamber	BT1450006
Dual Reagent Injector Model	BT8040036
Lionheart FX CO ₂ and O ₂ Gas Controller	BT1210013

Agilent BioTek Lionheart LX Automated Microscopes

Affordable Benchtop Microscopy

A cost-effective alternative to custom imaging solutions, the Lionheart LX can automate cell migration and invasion assays, cell counting, endpoint live cell assays, histological evaluations, immunofluorescence, label-free cell counting, confluence, and more. When used with Gen5 software, it enables automated image capture, processing, and analysis.



Description	Cat. No.
Lionheart LX Automated Microscope	BTLLXWSN
Lionheart LX Environmental Control Cover	BT2020018

Save 50% on a Laser Autofocus Cube with Microscope Purchase

Buy an Agilent BioTek Lionheart Automated Microscope and you'll receive a 50% discount on an Agilent BioTek Laser Autofocus Cube — a savings of over \$4,500.

Visit fishersci.com/agilent-laser-offer to learn more and save.

Restrictions apply.

Agilent BioTek MultiFlo FX Multimode Dispensers

Multiple Liquid Handling Processes on a Single Platform

The MultiFlo FX, an automated multimode reagent dispenser, works with 6- to 1,536-well microplates and offers parallel dispensing, random access dispensing (RAD), and a patented automated media exchange (AMX) module. Use it for 2D and 3D cell culture, concentration normalization assays, ELISA, bead-based assays, and more. A fully configured MultiFlo FX can replace up to five other liquid handlers.



Description	Cat. No.
MultiFlo FX Model MFXP1, with 1 Module Arm, 1 Peristaltic Dispense Pump, and 1 Peri-Pump Cassette with Plastic Tips	BTMFXP1
MultiFlo FX Model MFXP2, with 2 Module Arms, 1 Peristaltic Dispense Pump, and 1 Peri-Pump Cassette with Plastic Tips	BTMFXP2
MultiFlo FX Model MFXP2R, with RAD Single Channel Dispenser, 2 Module Arms, 2 Peristaltic Dispense Pumps, 1 RAD Manifold, and Tubing	BTMFXP2R
MultiFlo FX Peristaltic Pump Dispenser Module	11-120-643
MultiFlo FX Dual Syringe Pump Dispenser Module (Autoclavable)	11-120-644
MultiFlo FX Dual Syringe Pump Dispenser Module (Non-Autoclavable)	11-120-645
MultiFlo FX Wash Module	BT1260023
MultiFlo FX Automated Media Exchange Module	BT1260041

Visit fishersci.com/agilent-biotek to shop and learn more about Agilent BioTek products.



Reach New Horizons of Information and Insight

Explore more possibilities and accelerate discoveries with BD Biosciences flow cytometers, reagents, and single-cell multiomics solutions.

BD Single-Cell Multiomics Solutions

Unleash the power of high-dimensional biology to understand complex biological systems. With the BD single-cell multiomics (scM) solution, you can obtain more proteomics and genomics data.

The solution consists of:

BD Rhapsody Express Single-Cell Analysis System

Capture and analyze multiomic information with this high-throughput microwell-based single-cell partitioning system.

BD Rhapsody Scanner

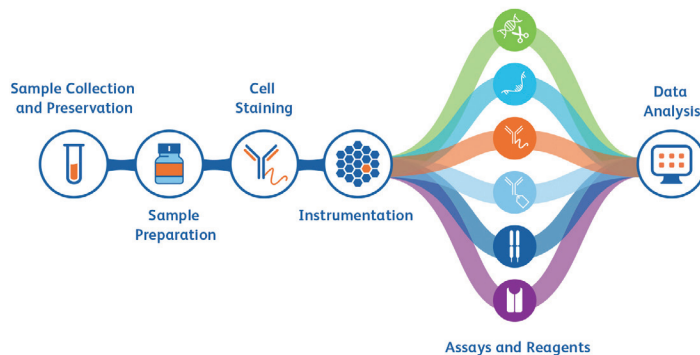
Combine the BD Rhapsody Scanner with the BD Rhapsody Express Single-Cell Analysis System for quality control at every step of the single-cell workflow.

BD Single-Cell Multiomics Reagents

Explore high-dimensional biology to simultaneously detect hundreds of genes and proteins at a single-cell resolution.



Description	Cat. No.
Rhapsody Scanner	BDB633701
Rhapsody Express	BDB633702
Rhapsody Package	BDB633707



BD

Accuri C6 Plus Flow Cytometers

This compact cytometer supports multiple applications, including immunology, cell and cancer biology, plant and microbiology, and industrial applications.

- Volumetric counting and continuous sampling
- Simplified workflow with BD quality reagents and kits
- Automated sample loader for walkaway convenience
- Intuitive and easy-to-learn BD Accuri C6 Plus Software



Description	Cat. No.
Accuri C6 Plus Flow Cytometer System	BDB661311
Accuri C6 Plus Flow Cytometer System with CSampler Plus Sample Loader	BDB661310
CSampler Plus Sampler Loader Only	BDB660519

BD

Horizon RealYellow 586 Dyes

BD Horizon RealYellow 586 (RY586) Reagents contain fluorochromes excited primarily by the 561 nm yellow-green laser. Just as bright as PE but with less cross-laser excitation, RY586 reagents enable more flexible panel design on conventional flow cytometers.

- Minimal cross-laser excitation from the 488 nm blue laser
- Bright fluorescence for detecting low-expression surface and intracellular markers



Below is a representative sample of what you'll find in the product line.

Description	Quantity	Cat. No.
IgG1 κ Mouse, Clone: X40, Isotype Control	50 μ g	BDB568097
CD4 Mouse, Anti-Human, Clone: SK3	100 tests	BDB568098
	25 tests	BDB568099
CD19 Mouse, Anti-Human, Clone: SJ25C1	100 tests	BDB568107
	25 tests	BDB568108
CD3 Mouse, Anti-Human, Clone: UCHT1	100 tests	BDB568112
	25 tests	BDB568113
CD8 Mouse, Anti-Human, Clone: RPA-T8	100 tests	BDB568114
	25 tests	BDB568115

Visit fishersci.com/bdbiosciences to explore more reagents.

**Get 10% Off a Vial
of Any BD Horizon
RealYellow 586 Reagent**

Buy any BD Horizon RealYellow 586 reagent and get 10% off the list price of a single vial.

Visit fishersci.com/bd-ry586 to learn more and save.

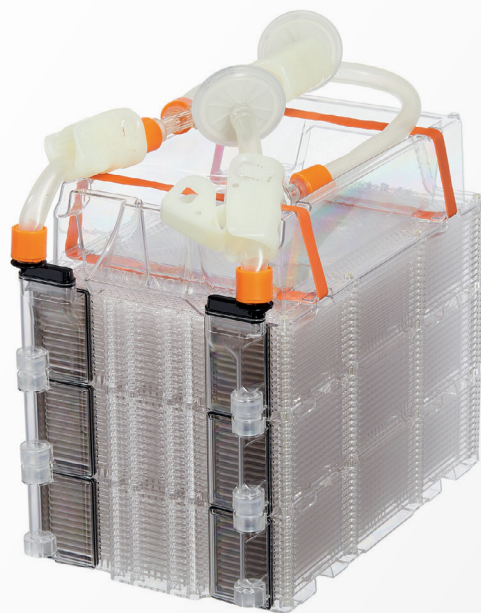
Restrictions apply.

CORNING

Achieve High Yields with a Closed, Scalable System

Corning High Yield **PERformance** (**HYPER**) Platform

Corning HYPERStack Cell Culture Vessels combine the best of Corning CellSTACK and Corning HYPERFlask products. CellSTACK gas-permeable film technology makes the HYPERStack platform an efficient, scalable choice for adherent cell culture.



More cells – five times the growth surface area of a traditional vessel with a comparable footprint

Closed system – no open fluid manipulations

Scalability – multiple size offerings to scale up and scale out

Ergonomics – efficient manipulation with handling equipment and accessories

Fixed media volume – 0.2 mL/cm² fills vessel to reduce volumetric waste

Description	Quantity	Cat. No.
HYPERStack 12-Layer Cell Culture Vessels, 1,310 mL	4/Case	10-320-184
HYPERStack 36-Layer Cell Culture Vessels, 3,920 mL	2/Case	10-320-186



fisherbrand

Scrape, Lift, and Strain

Fisherbrand Cell Scrapers

Simplify Cell Harvesting

Appropriate for a variety of cell culture vessels, these nonpyrogenic cell scrapers feature handle and blade designs that reduce cell damage. Available in 0.7 in. and 1.18 in. blade lengths.

- Presterilized and individually wrapped
- Polyethylene copolymer blade pivots for even contact
- Ribbed polystyrene handle provides secure grip and added control
- Flexible joint between blade and handle eases vessel entry
- Pivoting blade adjusts for difficult angles

Catalog Numbers: **08-100-241, 08-100-242**



Fisherbrand Cell Lifters

Quickly Remove Cell Layers

Use with dishes and cell culture clusters, the one-piece design and chiseled blade improves control while minimizing damage.

- Sterilized and individually wrapped
- Polyethylene copolymer blade with angled, chiseled edge
- Designed to maintain even contact with growth area

Catalog Number: **08-100-240**



Fisherbrand Sterile Cell Strainers

Rapidly Isolate Primary Cells for Single-Cell Suspensions

Ready to use for straining stem and primary samples, these disposable sterile strainers are available in three color-coded mesh sizes. Universal fit for compatibility with most 50 mL conical tubes.

- Offer a fast, simple alternative to gauze filtration
- Reliably dissociate cells from clumps or primary tissues
- Consistently produce a uniform single-cell suspension

Catalog Numbers: **22-363-548, 22-363-549, 22-363-547**



Get More with the **Fisher Scientific Channel**

We're more than just products. The Fisher Scientific channel includes dedicated specialists and customer support to help you with every step of your work. Plus, we offer a range of programs to help you achieve more.



Sustainability Program

Find sustainable solutions to help you reduce your environmental footprint.

fishersci.com/sustainability



Special Offers

Save on everything from consumables to equipment.

fishersci.com/promotions



SureTRACE

Find products with full document traceability, enhanced quality guarantees, and minimal lots per delivery.

fishersci.com/suretrace



Thermo Fisher Financial Services

Choose from a variety of financing options to help you get the equipment you need.

fishersci.com/financialservices



Supplier Diversity Program

Find a wide range of reliable products that meet supplier diversity requirements.

fishersci.com/supplierdiversity



Same-Day Shipping

Look for products with the Fisher Scientific Edge icon and order before 2 p.m. for same-day shipping.

fishersci.com/edge



Lab Safety

Find what you need to protect your people and stay compliant.

fishersci.com/lab-safety

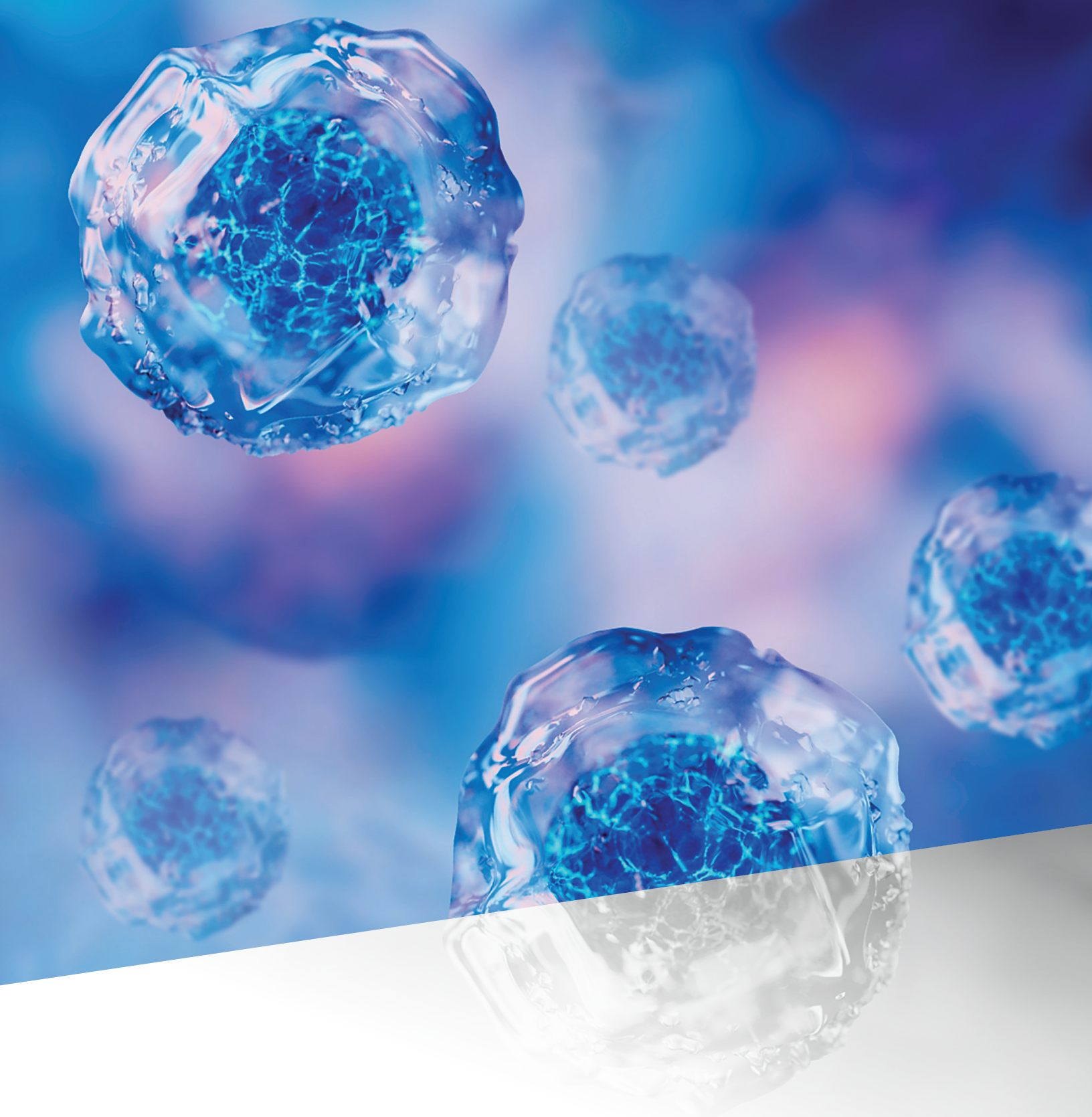
Find More Products for Your Workflows

Cell Analysis Methods: fishersci.com/cellanalysis

Cell Culture: fishersci.com/cellculture

Customer Service

Get help with product orders, questions, and more. fishersci.com/contactus



Visit **fishersci.com/inspiring-innovation** to learn more.

Distributed by Fisher Scientific. Contact us today:

In the United States

Order online: fishersci.com

Call customer service: 1-800-766-7000

© 2022 Thermo Fisher Scientific Inc. All rights reserved.

Trademarks used are owned as indicated at fishersci.com/trademarks.

22-722-1580 JA 08/22 BN4494316-US

 **fisher scientific**
part of Thermo Fisher Scientific