

# ATPIF1 Monoclonal Antibody (5E2D7)

## Product Details

Size	100 µg
Species Reactivity	Bovine, Human, Mouse, Rat
Published Species	Dog, Rat, Non-human primate, Bovine, Human, Mouse
Host/Isotype	Mouse / IgG1, kappa
Class	Monoclonal
Type	Antibody
Clone	5E2D7
Conjugate	Unconjugated
Immunogen	Recombinant IF1.
Form	Liquid
Concentration	1 mg/mL
Purification	purified
Storage buffer	PBS, pH 7.4
Contains	0.02% sodium azide
Storage conditions	4° C
RRID	AB_2535841

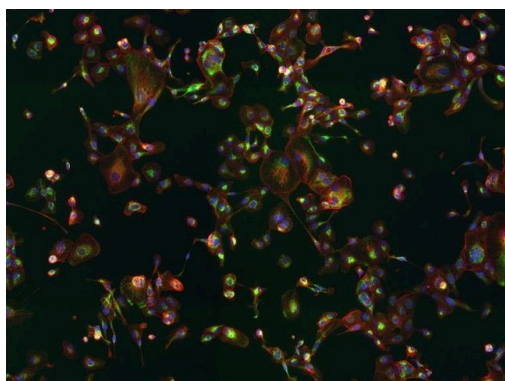
Applications	Tested Dilution	Publications
Western Blot (WB)	1 µg/mL	2 Publications
Immunohistochemistry (Paraffin) (IHC (P))	-	1 Publication
Immunohistochemistry (Frozen) (IHC (F))	-	1 Publication
Immunocytochemistry (ICC/IF)	1-5 µg/mL	5 Publications
in situ PLA (PLA)	-	1 Publication
Miscellaneous PubMed (Misc)	-	1 Publication

## Product Specific Information

The antibody was produced in vitro using hybridomas grown in serum-free medium, then purified by biochemical fractionation, and is near homogeneity as judged by SDS-PAGE.

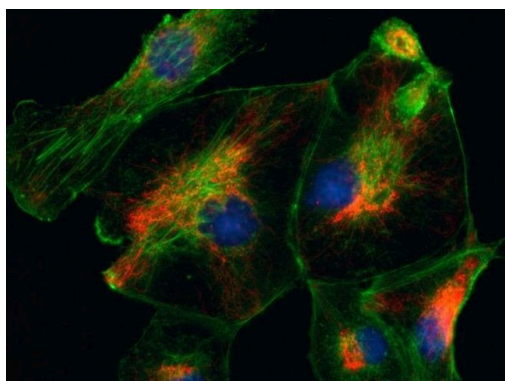
This antibody recognizes bands at ~10 and ~18 kDa on western analysis.

## Product Images For ATPIF1 Monoclonal Antibody (5E2D7)



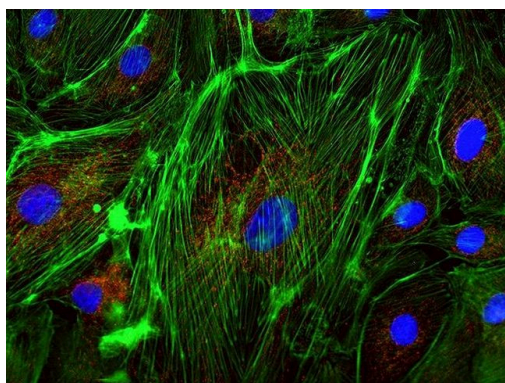
### ATPIF1 Antibody (A-21355) in ICC/IF

CAKI cells were plated on coverslips overnight. The next day cells were fixed and permeabilized using the Image-iT® Fixation/Permeabilization Kit (Product # R37602) according to protocol. Following suppression of background binding using Image-iT® FX Signal enhancer (Product # R37107), cells were incubated with 3 µg/mL anti-ATP synthase subunit IF1 (Product # A-21355) for labeling of mitochondria for 30 min at room temperature and washed three times with dPBS, followed by Alexa Fluor® 594 goat anti-rabbit IgG antibody ReadyProbes® reagent (Product # R37117) for 30 min and washed three times in dPBS. Cells were labeled with NucBlue® Live (Product # R37605) and ActinGreen™ 488 ReadyProbes® reagent (Product # R37110) according to protocol. Coverslips were then mounted using ProLong® Gold antifade reagent (Product # P36930). Individual images were acquired on the EVOS® FL Auto imaging system with a 10X objective (Product # AMEP4681) and stitched to a panorama using the tile/stitch function.



### ATPIF1 Antibody (A-21355) in ICC/IF

CAKI cells were plated on coverslips overnight. The next day cells were fixed and permeabilized using the Image-iT® Fixation/Permeabilization Kit (Product # R37602) according to protocol. Following suppression of background binding using Image-iT® FX Signal enhancer (Product # R37107), cells were incubated with 3 µg/mL anti-ATP synthase subunit IF1 (Product # A-21355) for labeling of mitochondria for 30 min at room temperature and washed three times with dPBS, followed by Alexa Fluor® 594 goat anti-rabbit IgG antibody ReadyProbes® reagent (Product # R37117) for 30 min and washed three times in dPBS. Cells were labeled with NucBlue® Live (Product # R37605) and ActinGreen™ 488 ReadyProbes® reagent (Product # R37110) according to protocol. Coverslips were then mounted using ProLong® Gold antifade reagent (Product # P36930). Images were taken using the EVOS® FL Auto Imaging System and a 40X Coverslip corrected objective (Product # AMEP4699).



### ATPIF1 Antibody (A-21355) in ICC/IF

BPAE cells were plated on coverslips overnight. The next day the cells were fixed and permeabilized using the Image-iT® Fixation/Permeabilization Kit (Product # R37602) according to protocol. Cells were then incubated with 3 µg/mL anti-ATP Synthase Subunit IF1 antibody (Product # A-21355) for labeling of mitochondria for 60 min at room temperature followed by three washes with dPBS. Cells were then incubated with a 1:1000 dilution of goat anti-mouse Qdot® 655-conjugated secondary antibody (Product # Q-11011MP) for 60 min, followed by three washes with dPBS. Cells were labeled with NucBlue® Live cell stain (Product # R37605) and ActinGreen™ 488 ReadyProbes® reagent (Product # R37112) according to protocol. Coverslips were then mounted using ProLong® Gold Antifade Reagent (Product # P36930). Images were taken using the EVOS® FL Auto Imaging System and a 40X Coverslip corrected objective (Product # AMEP4699).

[View more figures on fishersci.com](https://www.fishersci.com)

Western Blot (1)

<p>Journal of virology</p> <p><b>Arenavirus infection induces discrete cytosolic structures for RNA replication.</b></p> <p>"A-21355 was used in western blot to identify and study cytosolic structures involved in arenavirus replication and transcription."</p> <p>Authors: Baird NL,York J,Nunberg JH</p>	<p>Year 2012</p> <p>Species Non-human primate</p>
--	---

Immunohistochemistry (Paraffin) (1)

<p>DNA repair</p> <p><b>Mitochondrial DNA toxicity compromises mitochondrial dynamics and induces hippocampal antioxidant defenses.</b></p> <p>"A-21355 was used in immunohistochemistry - paraffin section to investigate the effects of mitochondrial DNA damage on hippocampal neurons."</p> <p>Authors: Lauritzen KH,Cheng C,Wiksen H,Bergersen LH,Klungland A</p>	<p>Year 2011</p> <p>Species Mouse</p> <p>Dilution 1:1000</p>
--	--

Immunocytochemistry (4)

<p>JCI insight</p> <p><b>Adiponectin/T-cadherin system enhances exosome biogenesis and decreases cellular ceramides by exosomal release.</b></p> <p>"A-21355 was used in Immunocytochemistry-immunoflourescence to demonstrate that the adiponectin/T-cadherin system enhances exosome biogenesis and secretion, leading to the decrease of cellular ceramides."</p> <p>Authors: Obata Y,Kita S,Koyama Y,Fukuda S,Takeda H,Takahashi M,Fujishima Y,Nagao H,Masuda S,Tanaka Y, Nakamura Y,Nishizawa H,Funahashi T,Ranscht B,Izumi Y,Bamba T,Fukusaki E,Hanayama R,Shimada S,Maeda N, Shimomura I</p>	<p>Year 2018</p> <p>Species Mouse</p>
---	---

<p>Molecular biology of the cell</p> <p><b>GOLPH3 drives cell migration by promoting Golgi reorientation and directional trafficking to the leading edge.</b></p> <p>"A21355 was used in immunocytochemistry to investigate the role of the phosphatidylinositol-4-phosphate/GOLPH3 /myosin 18A/F-actin pathway to directional cell migration"</p> <p>Authors: Xing M,Peterman MC,Davis RL,Oegema K,Shiau AK,Field SJ</p>	<p>Year 2016</p> <p>Species Human</p>
---	---

[View more ICC/IF references on fishersci.com](#)

More applications with references on fishersci.com

- PLA (1)
- Misc (1)

For Research Use Only. Not for use in diagnostic procedures. Not for resale without express authorization. Products are warranted to operate or perform substantially in conformance with published Product specifications in effect at the time of sale, as set forth in the Production documentation, specifications and/or accompanying package inserts ("Documentation"). No claim of suitability for use in applications regulated by FDA is made. The warranty provided herein is valid only when used by properly trained individuals. Unless otherwise stated in the Documentation, this warranty is limited to one year from date of shipment when the Product is subjected to normal, proper and intended usage. This warranty does not extend to anyone other than the Buyer. Any model or sample furnished to Buyer is merely illustrative of the general type and quality of goods and does not represent that any Product will conform to such model or sample. NO OTHER WARRANTIES, EXPRESS OR IMPLIED, ARE GRANTED INCLUDING WITHOUT LIMITATION, IMPLIED WARRANTIES OF MERCHANTABILITY, FITNESS FOR ANY PARTICULAR PURPOSE, OR NON INFRINGEMENT. BUYER'S EXCLUSIVE REMEDY FOR NON-CONFORMING PRODUCTS DURING THE WARRANTY PERIOD IS LIMITED TO REPAIR, REPLACEMENT OF OR REFUND FOR THE NON-CONFORMING PRODUCT(S) AT SELLER'S SOLE OPTION. THERE IS NO OBLIGATION TO REPAIR, REPLACE OR REFUND FOR PRODUCTS AS THE RESULT OF (I) ACCIDENT, DISASTER OR EVENT OF FORCE MAJEURE, (II) MISUSE, FAULT OR NEGLIGENCE OF OR BY BUYER, (III) USE OF THE PRODUCTS IN A MANNER FOR WHICH THEY WERE NOT DESIGNED, OR (IV) IMPROPER STORAGE AND HANDLING OF THE PRODUCTS. Unless otherwise expressly stated on the Product or in the documentation accompanying the Product, the Product is intended for research only and is not to be used for any other purpose, including without limitation, unauthorized commercial uses, in vitro diagnostic uses, ex vivo or in vivo therapeutic uses, or any type of consumption by or application to human or animals.