

Protector™ XL™ Laboratory Hoods



All models feature:

- High Performance Fume Hood per SEFA 1 definition
- By-pass airflow design
- Ergonomic Eco-Foil™ air foil with patented aerodynamic Clean-Sweep™ airflow openings
- Cord-Keeper™ Slots on left and right side of air foil
- By-pass block
- Glacier white powder-coated steel exterior
- Chemical-resistant, fiberglass-reinforced, composite panel liner and baffle

- Opti-Zone™ Baffle* with flame spread less than 25 per ASTM E84. Baffle is removable for cleaning
- Tempered safety glass vertical-rising single sash with cable and pulley and powder-coated aluminum sash handle
- 37.5" (95.3 cm) high sightline from the work surface and header panel
- 31.7" (80.5 cm) exterior depth
- Removable front and side panels, and front and interior panels for service access to plumbing and electrical wiring
- Pre-wired LED lighting with vapor-proof design and ADA-compliant light and blower switches. Lighting rated for 50,000 hours

- Powder-coated stainless steel, 12.81" (32.5 cm) ID exhaust connection(s)
- Two pre-pumbed service fixtures with forged brass valves, lower right side with brass tubing for gas and lower left side with copper tubing for cold water. Components for converting either or both fixtures to air and vacuum are provided. Inlet tubing is not provided
- One pre-wired GFCI electrical duplex receptacle on lower right side and, on 8' model only, one additional pre-wired GFCI electrical duplex receptacle on lower left side

All models require (not included):

- Remote blower
- Work surface
- Base cabinet or stand
- Ductwork

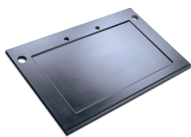
Optional accessories for on-site installation include:

- Service Fixture Kits
- Electrical Duplex Kits
- Distillation Grid Kits
- Sash Stop Kits
- Guardian Airflow Monitor Kits
- Ceiling Enclosure and Rear Finish Panel Kits

Description	Overall Dimensions (w x d x h)	Interior Dimensions (w x d x h)	Shipping Weight	Cat. No.
4' XL Hood with 2 Fixtures and 1 Duplex Receptacle	48.0" x 31.7" x 59.0"	38.1" x 23.6" x 41.1"	385 lbs.	16-317-155
6' XL Hood with 2 Fixtures and 1 Duplex Receptacle	72.0" x 31.7" x 59.0"	62.1" x 23.6" x 41.1"	525 lbs.	16-317-156
8' XL Hood with 2 Fixtures and 2 Duplex Receptacles	96.0" x 31.7" x 59.0"	86.1" x 23.6" x 41.1"	685 lbs.	16-317-157

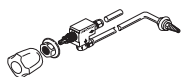
Protector™ XL™ Laboratory Hood Accessories

SpillStopper™ Work Surfaces are molded from a special formulation of corrosion-resistant epoxy resins. Work surface is dished and contoured to conform to the interior liner of Protector XL Hoods. Front edge has large radius to aerodynamically direct airflow into the hood. Includes pre-drilled 1.5" diameter holes for venting, 2.5" diameter holes for plumbing pass-through and a pre-cut 6" x 3" oval cupsink cutout in left rear corner. Cupsink is sold separately.

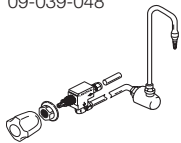


Description	Overall Dimensions (w x d x h)	Shipping Weight	Cat. No.
4' SpillStopper Work Surface with Left Rear Cupsink Cutout	48.0" x 30.0" x 1.25"	120 lbs.	10-369-148
6' SpillStopper Work Surface with Left Rear Cupsink Cutout	72.0" x 30.0" x 1.25"	160 lbs.	10-369-162
8' SpillStopper Work Surface with Left Rear Cupsink Cutout	96.0" x 30.0" x 1.25"	250 lbs.	10-369-169
Oval Polypropylene Cupsink	6.0" x 3.0"	4 lbs.	16-306-15
Cupsink Cover	7.4" x 4.4" x 0.3"	2 lbs.	16-317-158

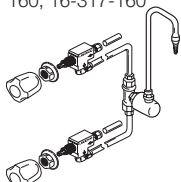
Service Fixture Kits for mounting on the left or right side of Protector XL Hoods with 31.7" depth. Inlet tubing is not included. 16-317-160 requires a 1.375" dia. drill hole in liner.



09-039-039 through
09-039-048



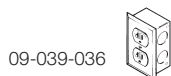
09-039-049, 16-317-
160, 16-317-160



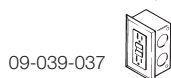
09-039-050

Description	Knob Color	Valve	Tubing	Shipping Weight	Cat. No.
Cold Water Service Fixture Kit (CW)	Green	1/4" Brass	Copper	4 lbs.	09-039-039
Air Service Fixture Kit (AIR)	Orange	1/4" Brass	Copper	4 lbs.	09-039-040
Vacuum Service Fixture Kit (VAC)	Yellow	1/4" Brass	Copper	4 lbs.	09-039-041
Gas Service Fixture Kit (GAS)	Blue	1/4" Brass	Brass	4 lbs.	09-039-042
Argon Service Fixture Kit (ARG)	Gray	1/4" Brass	Copper	4 lbs.	09-039-043
Hot Water Service Fixture Kit (HW)	Red	1/4" Brass	Copper	4 lbs.	09-039-044
Deionized/Distilled Water Service Fixture Kit (DI)	White	1/4" Stainless	Stainless	4 lbs.	09-039-045
Steam Service Fixture Kit (STM)	Black	1/4" Brass	Copper	4 lbs.	09-039-046
Nitrogen Service Fixture Kit (NIT)	Brown	1/4" Brass	Copper	4 lbs.	09-039-047
Oxygen Service Fixture Kit (OXY)	Light Green	1/4" Brass	Copper	4 lbs.	09-039-048
Cold Water Gooseneck Faucet Kit with green powder-coated brass rigid/swivel gooseneck (CW)	Green	3/8" Brass	Copper	10 lbs.	09-039-049
Cold Water Gooseneck Faucet Kit with gray PVC rigid gooseneck (CW)	Green	3/8" Brass	Copper	10 lbs.	16-317-159
Deionized/Distilled Water Faucet Kit with gray PVC rigid gooseneck (DI)	White	1/4" Stainless	Stainless	10 lbs.	16-317-160
Hot/Cold Mixing Gooseneck Faucet Kit with white powder-coated brass rigid/swivel gooseneck	Red/Green	2 each, 1/4" Brass	Copper	11 lbs.	09-039-050

Electrical Receptacle Kits for mounting in left or right side of 3' to 8' Protector Hoods. Each kit includes an electrical receptacle, wiring, junction box and receptacle cover plate.



09-039-036



09-039-037

Description	Volts	Hz	Amps	Shipping Weight	Cat. No.
Duplex Receptacle Kit (includes wires)	115	60	20	4 lbs.	09-039-036
GFCI Duplex Receptacle Kit (includes wires)	115	60	20	4 lbs.	09-039-037
Duplex Receptacle Kit (includes wires)	230	60	20	4 lbs.	09-039-038

Guardian™ Airflow Monitor Kits sense and alert you to low airflow conditions. Include face plate with circuit board, electrical power pack, probe, vinyl tubing and wiring connections. For use with Protector Hoods. For 115V, 50/60 Hz operation. Installation is required.



10-369-204



10-369-206

Description	Shipping Weight	Cat. No.
Guardian Airflow Monitor Kit, monitors and alerts operator to low airflow conditions	6 lbs.	10-369-204
Guardian Digital Airflow Monitor Kit, provides digital display of face velocity, audible alarm	6 lbs.	10-369-206

In the United States:

For customer service, call 1-800-766-7000
To fax an order, use 1-800-926-1166
To order online: fishersci.com

In Canada:

For customer service, call 1-800-234-7437
To fax an order, use 1-800-463-2996
To order online: fishersci.ca

