

Corning® Brand Equipment Product Selection Guide



Find it at [fishersci.com](https://www.fishersci.com)

Introduction

Corning Life Sciences is pleased to present our Equipment Selection Guide. In this guide, you will find a selection of Corning's newest and most requested products.

For up-to-date information on Corning Life Sciences' comprehensive range of products and services, go to fishersci.com/corning where you can access:

- ▶ New products information
- ▶ Product catalog
- ▶ Technical information including:
 - Application notes
 - Instruction manuals
 - Product bulletins
 - Product selection guides
- ▶ Product literature



Equipment

Corning® Cell Counter	2
Liquid Handling Equipment	3
Corning Lambda™ EliteTouch™ Single-channel, 8-channel, and 12-channel Pipettors, and Accessories	3
Corning Lambda EliteTouch Starter Kit	3
Corning Lambda Plus Single-channel, 8-channel, and 12-channel Pipettors and Accessories	4
Corning Lambda Plus Starter Kit	4
Costar® 8-Pette® and 12-Pette Multi-channel Pipettors	5
Corning Stripettor™ Ultra Pipet Controller and Accessories	5
Corning Aspirator Device and Accessories	5
Transtar®-96 Liquid Transfer System	5
Costar Reagent Reservoirs	5
Corning Step-R™ Repeating Pipettor and Syringe Tips	6
Corning Step-R Starter Pack	6
Centrifugation Equipment	7
Corning LSE™ Mini Microcentrifuge and Accessories	7
Corning LSE High Speed Microcentrifuge and Accessories	8
Corning LSE Compact Centrifuge, Rotors, and Adapters	9
Agitation Equipment	10
Corning LSE Vortex Mixer and Accessories	10
Corning LSE Digital Microplate Shaker	10
Corning LSE Low Speed Orbital Shaker	11
Corning LSE Orbital Shaker and Accessories	11
Corning LSE Platform Rocker	12
Corning LSE Digital Vortexer	12
Constant Temperature Equipment	13
Corning LSE Benchtop Shaking Incubator	13
Corning LSE 49L Shaking Incubator	13
Corning LSE 71L Shaking Incubator	14
Corning LSE 6 Liter Digital Water Bath	15
Corning LSE Digital Dry Bath Heater	15
Corning LSE Digital Dry Bath Heater Accessories	16
Corning Digital Hot Plates, Stirring Hot Plates, and Stirrers	17
Corning Analog Hot Plates, Stirring Hot Plates, and Stirrers	18
Stir Bars and Stir Bar Retriever	20
Temperature Controller and Accessories	20
Indexes	21

Corning® Cell Counter



The new Corning Cell Counter is the first automated cell counter that combines the best of both worlds and is:

- ▶ Fast – thanks to its online image processing
- ▶ Accurate – thanks to its cloud-based machine learning algorithm.
- ▶ Low-cost – works with common reusable glass hemocytometer. No consumables required.

Specifications

Counting range	5 x 10 ⁴ to 1.0 x 10 ⁷ cells/mL
Counting range	4 to 70 μm
Measurement time	<3 sec.*
Compatibility	Reusable and disposable counting chambers
Sample volume	10 μL
Weight	1.0 kg
Field of view	Selectable 1.96 mm ² or 3 mm ²
Magnification	200X
Image resolution	2048 x 1536
Exported formats	PNG
Light source	LED
Camera	5 MP CMOS
Unit dimensions	122 x 122 x 125 mm (L x W x H)
Operating environment	5°C to 40°C, 20% to 95% humidity

*Measured using a 73 Mbps download speed and a 20 Mbps upload speed. Actual speed can vary depending on the internet connection.

Fisher Scientific Cat. No.	Description	Qty/Cs
07-201-800	Corning Cell Counter	1
07-200-988	Counting Chamber	1

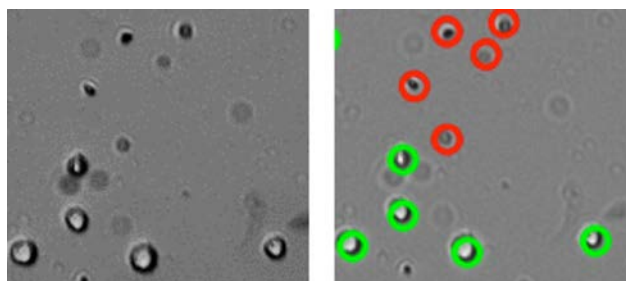


Figure 1. Dead cells stained with Trypan blue are detected by the image analysis algorithm. Red circles represent dead cells, green circles represent live cells.

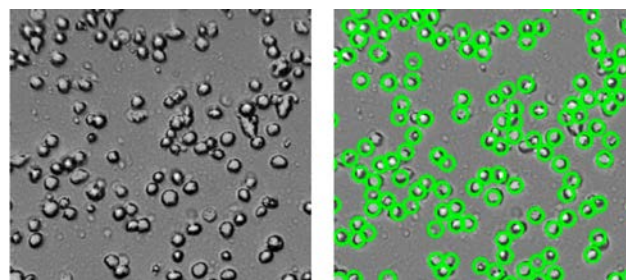


Figure 2. The image analysis algorithm is able to detect clusters of cells. Red circles represent dead cells, green circles represent live cells.

Three-second Cell Counts

The Corning Cell Counter uses cloud-based image processing to perform a single cell count in less than three seconds. This is much faster than most automated cell-counting systems.

Higher Accuracy

The Corning Cell Counter uses a state-of-the-art image analysis software to ensure optimal accuracy. Trypan Blue can be added (Figure 1) to detect cell viability. The Corning Cell Counter can also detect clusters of cells, which leads to accurate cell counts of “highly concentrated samples” (up to 1 x 10⁷ cells/mL; Figure 2).

Low Cost

The Cell Counter uses a reusable glass counting chamber, enabling automated cell counting without the cost of disposable slides.

Liquid Handling Equipment



Corning® Lambda™ EliteTouch™ Single-channel, 8-channel, and 12-channel Pipettors

- ▶ Ergonomic handle design is a perfect fit for both the right and left hand
- ▶ Convenient one-hand volume setting with auto-lock system prevents accidental volume change during work
- ▶ 4-digit counter provides greater precision and is perfectly positioned for visibility at all times
- ▶ Single-channel pipettors are compatible with very narrow tubes
- ▶ Fully autoclavable and UV-resistant for sample protection against contaminations
- ▶ The multi-channel shafts retract individually for perfect tip loading and easier tip ejection
- ▶ Unique ejector lever system enables effortless tip ejection
- ▶ Easy in-lab calibration helps you quickly adjust your pipettor to various liquid types
- ▶ Individually tested and supplied with a certificate of quality
- ▶ Additional colored pushbuttons (included) enable easy size identification and reduce the risk of cross-contamination.
- ▶ 3-year warranty

Corning Lambda EliteTouch Pipettors

Single-channel

Fisher Scientific Cat. No.	Volume Range (µL)	Accuracy (%)	Precision (%)	Non-filtered Tip (µL)	Qty/Cs
07-201-040	0.1 - 2	±40.0 to ±1.5	≤12.0 to ≤0.7	10	1
07-201-041	0.5 - 10	±4.0 to ±1.0	≤2.8 to ≤0.4	10	1
07-201-042	2 - 20	±3.5 to ±0.8	≤1.5 to ≤0.3	200	1
07-201-043	5 - 50	±3.5 to ±0.8	≤1.3 to ≤0.3	200	1
07-201-044	10 - 100	±3.0 to ±0.8	≤1.0 to ≤0.2	200	1
07-201-045	20 - 200	±2.0 to ±0.6	≤0.7 to ≤0.2	200	1
07-201-046	100 - 1,000	±2.5 to ±0.6	≤0.6 to ≤0.2	1,000	1

8-channel

07-201-047	0.5 - 10	±10.0 to ±2.0	≤8.0 to ≤1.2	10	1
07-201-048	5 - 50	±4.0 to ±1.6	≤2.5 to ≤0.6	200	1
07-201-049	10 - 200	±5.0 to ±1.0	≤3.0 to ≤0.6	200/300	1
07-201-050	30 - 300	±3.0 to ±1.0	≤1.5 to ≤0.6	300	1

12-channel

07-201-051	0.5 - 10	±10.0 to ±2.0	≤8.0 to ≤1.2	10	1
07-201-052	5 - 50	±4.0 to ±1.6	≤2.5 to ≤0.6	200	1
07-201-053	10 - 200	±5.0 to ±1.0	≤3.0 to ≤0.6	200/300	1
07-201-054	30 - 300	±3.0 to ±1.0	≤1.5 to ≤0.6	300	1

Corning Lambda EliteTouch Starter Kit

Fisher Scientific Cat. No.	Description	Qty/Cs
07-201-055	Corning Lambda EliteTouch Starter Kit Includes: 4 single-channel pipettors: 0.5 to 10 µL (Cat. No. 07-201-041), 2 to 20 µL (Cat. No. 07-201-042), 20 to 200 µL (Cat. No. 07-201-045), 100 to 1000 µL (Cat. No. 07-201-046); universal linear stand for four single-channel pipettors (Cat. No. 07-202-453); Corning DeckWorks pipet tips: 10 µL (Cat. No. 10-320-704), 200 µL (Cat. No. 10-320-705), 1000 µL (Cat. No. 10-320-708); 3 colored pushbuttons (4 sets)	1

Accessories

Fisher Scientific Cat. No.	Description	Qty/Cs
07-201-790	Pipettor stand for one single-channel, 8-channel, or 12-channel pipettor	1
07-202-453	Universal linear stand for four pipettors, orange (four single-channel, maximum of two 8-channel or 12-channel pipettors)	1
07-202-454	Universal linear stand for four pipettors, transparent (four single-channel, maximum of two 8-channel or 12-channel pipettors)	1
07-202-455	Universal linear stand for six pipettors, transparent (six single-channel, maximum of three 8-channel or 12-channel pipettors)	1





Corning Lambda Plus single-channel pipettor



Corning Lambda Plus 8-channel and 12-channel pipettor



Corning® Lambda™ Plus Single-channel, 8-channel, and 12-channel Pipettors

- ▶ Low pipetting forces
- ▶ Volume lock prevents accidental change
- ▶ Fully autoclavable and UV-resistant
- ▶ Designed for universal fit with many common brands of pipet tips
- ▶ Adjustable tip ejector
- ▶ Factory calibrated to strict ISO 8655 standards
- ▶ 3-year warranty

Single-channel

Fisher Scientific Cat. No.	Volume Range (µL)	Accuracy (%)	Precision (%)	Tip (µL)*	Qty/Cs
07-764-700	0.1 - 2.0	±4.0 to ±1.5	≤1.2 to ≤0.7	10	1
07-764-701	0.5 - 10	±4.0 to ±0.5	≤2.8 to ≤0.4	10	1
07-764-702	2 - 20	±3.0 to ±0.8	≤1.5 to ≤0.3	200	1
07-764-703	10 - 100	±1.6 to ±0.8	≤0.8 to ≤0.2	200	1
07-764-704	20 - 200	±1.2 to ±0.6	≤0.6 to ≤0.02	200	1
07-764-705	100 - 1,000	±1.6 to ±0.6	≤0.40 to ≤0.15	1,000	1

8-channel

07-764-706	1 - 10	±8.0 to ±2.0	≤6.0 to ≤1.2	10	1
07-764-707	5 - 50	±4.0 to ±1.6	≤2.5 to ≤0.6	200	1
07-764-708	20 - 200	±3.0 to ±1.0	≤1.5 to ≤0.6	200/300	1
07-764-709	50 - 300	±1.6 to ±1.0	≤1.5 to ≤0.6	300	1

12-channel

07-764-710	1 - 10	±8.0 to ±2.0	≤6.0 to ≤1.2	10	1
07-764-711	5 - 50	±4.0 to ±1.6	≤2.5 to ≤0.6	200	1
07-764-712	20 - 200	±3.0 to ±1.0	≤1.5 to ≤0.6	200/300	1
07-764-713	50 - 300	±1.6 to ±1.0	≤1.5 to ≤0.6	300	1

* Non-filtered tip size suggestion

Corning Lambda Plus Starter Kit

Fisher Scientific Cat. No.	Description	Qty/Cs
10-320-804	Lambda Plus starter kit Includes: 4 single-channel pipettors: 0.5 to 10 µL (Cat. No. 07-764-701), 2 to 20 µL (Cat. No. 07-764-702), 20 to 200 µL (Cat. No. 07-764-704), 100 to 1000 µL (Cat. No. 89133-486); Universal carousel rack for six single-channel pipettors (Cat. No. 07-201-766); Corning DeckWorks pipet tips: 10 µL (Cat. No. 10-320-704), 200 µL (Cat. No. 10-320-705), 1000 µL (Cat. No. 10-320-708)	1 kit

Accessories

Fisher Scientific Cat. No.	Description	Qty/Cs
07-201-766	Corning Universal carousel rack for six Corning Lambda Plus single-channel pipettors	1
07-201-789	Corning Universal linear rack for Corning Lambda Plus single- and multi-channel pipettors	1
07-201-790	Corning Pipettor stand for Corning 8- and 12-channel pipettors	1
07-202-453	Universal linear stand for four pipettors, orange (four single-channel, maximum of two 8-channel or 12-channel pipettors)	1
07-202-454	Universal linear stand for four pipettors, transparent (four single-channel, maximum of two 8-channel or 12-channel pipettors)	1
07-202-455	Universal linear stand for six pipettors, transparent (six single-channel, maximum of three 8-channel or 12-channel pipettors)	1

Costar® 8-Pette® and 12-Pette® Multi-channel Pipettors



These multi-channel pipettors feature a unique, ergonomic trigger-style aspiration and dispense control mechanism designed to reduce thumb fatigue during repetitive pipetting.

Fisher Scientific Cat. No.	Volume Range (µL)	Channels	Qty/Pk	Qty/Cs
07-200-132	20 - 200	12	1	1
07-200-133	20 - 200	8	1	1

Corning® Stripettor™ Ultra Pipet Controller

The Stripettor Ultra pipet controller is designed for use with glass and plastic serological pipets from 0.5 to 100 mL. When fully charged, the batteries enable up to 8 hours of continuous use. Aspirating and dispensing speed is controlled through the finger triggers.

- ▶ LCD display for continuous visualization of speed, modes, and battery status
- ▶ Colored nose pieces for user or application identification
- ▶ 2-year warranty



Fisher Scientific Cat. No.	Description	Qty/Pk	Qty/Cs
07-202-350	Corning Stripettor Ultra Pipet Controller	1	1

Accessories

07-202-351	Hydrophobic PTFE filter 0.2 µm (5 pcs)	5	5
07-202-352	Hydrophobic PTFE filter 0.45 µm (5 pcs)	5	5
07-202-356	Silicone pipet holder	1	1
07-202-353	Battery set, 3 x AAA, NiHM	3	3
07-202-354	Battery cover with wings	1	1
07-202-355	Universal power supply, 9V with set of adaptors (EU, US, UK, and AUS)	1	1
07-202-357	Colored nose pieces, set of 4 (orange, yellow, green, red)	4	4



Corning Aspirator Device and Accessories

Fisher Scientific Cat. No.	Description	Qty/Pk	Qty/Cs
07-200-564	Aspirator device (includes hand piece, grommet for accessory attachment, and single-channel adapter for use with disposable pipet tips)	1	1
07-200-710	8-channel adapter for use with disposable pipet tips	1	1
08-757-313	Aspirating pipet, without graduations, unplugged, sterile, paper/plastic wrapped	50	500



Transtar®-96 Liquid Transfer System

- ▶ A portable, autoclavable liquid handling device for use with 96-well plates
- ▶ A sterile 96 tip disposable cartridge, which loads into the Transtar system, enables liquids to be aspirated, transferred, and dispensed over a volume range of 25 to 200 µL in 5 µL increments
- ▶ Transtar-96 system accuracy is rated at ±5% at all volume levels



Fisher Scientific Cat. No.	Description	Sterile	Qty/Pk	Qty/Cs
07-200-59	Transtar-96, adjustable-volume pipettor	N/A	1	1
07-200-60	Transtar elevator	N/A	1	1
07-200-61	Transtar disposable cartridges	Yes	1	24
07-200-56	Transtar disposable reservoir liner, open	Yes	1	100
07-200-57	Transtar disposable reservoir liner, 12-channel	Yes	1	100
07-200-58	Transtar disposable reservoir liner, 8-channel	Yes	1	100

Costar® Reagent Reservoirs

The reagent reservoirs are manufactured from modified polystyrene, are sterile, and disposable.



Fisher Scientific Cat. No.	Volume (mL)	Color	Qty/Pk	Qty/Cs
07-200-127	50	White	5	200
07-200-128	50	White	1	100
07-200-129	100	White	5	200
07-200-130	100	White	1	100

Corning® Step-R™ Repeating Pipettor and Syringe Tips



The Corning Step-R Repeating Pipettor is suitable to dispense volatile, dense, viscous, or foaming liquids, and for all applications where long dosing series are required. It works with 8 syringe tip sizes to dispense doses from 1 µL up to 5 mL.

- ▶ Easy volume setting: Volume selection chart conveniently located on the device
- ▶ Fast and precise multiple dispensing: Up to 48 pipetting doses without refilling the syringe tip
- ▶ Wide range of polypropylene syringe tips: 8 different sizes, sterile and non-sterile versions available
- ▶ Positive displacement syringe tips: Dedicated to work with high density or vapor pressure liquids such as glycerol or ethanol
- ▶ Maintenance-free
- ▶ 3-year warranty on the instrument

Fisher Scientific Cat. No.	Description	Qty/Pk	Qty/Cs
07-201-495	Corning Step-R Repeating Pipettor	–	1
07-201-475	Syringe tips, 0.05 mL	100	100
07-201-483	Syringe tips, 0.05 mL, sterile	1	100
07-201-476	Syringe tips, 0.5 mL	100	100
07-201-484	Syringe tips, 0.5 mL, sterile	1	100
07-201-477	Syringe tips, 1.25 mL	100	100
07-201-485	Syringe tips, 1.25 mL, sterile	1	100
07-201-478	Syringe tips, 2.5 mL	100	100
07-201-486	Syringe tips, 2.5 mL, sterile	1	100
07-201-479	Syringe tips, 5 mL	100	100
07-201-487	Syringe tips, 5 mL, sterile	1	100
07-201-480	Syringe tips, 12.5 mL	100	100
07-201-488	Syringe tips, 12.5 mL, sterile	1	100
07-201-481	Syringe tips, 25 mL	25	25
07-201-489	Syringe tips, 25 mL, sterile	1	25
07-201-482	Syringe tips, 50 mL	25	25
07-201-490	Syringe tips, 50 mL, sterile	1	25

Accessories

Fisher Scientific Cat. No.	Description	Qty/Cs
07-201-496	Adapter for 25 mL syringe tips	1
07-201-497	Adapter for 50 mL syringe tips	1

Corning Step-R Starter Pack

The Corning Step-R starter kit contains:

- ▶ Corning Step-R Repeating Pipettor (Cat. No. 07-201-495)
- ▶ Adapter for 25 mL syringe tips (Cat. No. 07-201-496) and 50 mL syringe tips (Cat. No. 07-201-497); Syringe tips (5/pk) of 0.05 mL (Cat. No. 07-201-475)
- ▶ 2.5 mL (Cat. No. 07-201-478), 5 mL (Cat. No. 07-201-479), 12.5 mL (Cat. No. 07-201-480); Syringe tips (2/pk) of 25 mL (Cat. No. 07-201-481), and 50 mL (Cat. No. 07-201-482)

Fisher Scientific Cat. No.	Description	Qty/Cs
07-201-491	Corning Step-R Starter Pack	1 kit



Corning Step-R Starter Pack

Centrifugation Equipment

Corning® LSE™ Mini Microcentrifuge



The Corning LSE Mini Microcentrifuge is a personal bench top instrument that operates at a fixed speed of 6,000 rpm (RCF 2,000 x g) and was designed for quick spin downs of micro-samples.

- ▶ Quick release rotor system eliminates the need for tools to exchange rotors
- ▶ Electronic braking provides rapid deceleration for more efficient sample prep
- ▶ Compact, rugged design withstands heavy use in crowded lab environment
- ▶ Dual lid switch provides safe operation
- ▶ Ergonomic design allows for comfortable handling
- ▶ Certifications CE, cTUVus

Fisher Scientific Cat. No.	Description	Voltage	Plug Type	Speed (rpm)	Weight	Dimensions (H x W x D)	Qty/Cs
07-203-954	LSE Mini microcentrifuge	110-240V, 50/60Hz	Universal	6,000	2.3 lbs. (1.1 kg)	6.8 x 5.8 x 4.8 in. (17.4 x 14.8 x 12.2 cm)	1

Accessories included in Cat. No. 07-203-954 and also sold separately:

Fisher Scientific Cat. No.	Description	Qty/Cs
07-203-955	Rotor, holds 8 x 1.5/2.0 mL tubes	1
07-203-956	Rotor, holds 4 x 8-strip tubes	1
07-203-952	Adapter, 0.20 for rotor (Cat. No. 07-203-955)	8
07-203-953	Adapter, 0.25 for rotor (Cat. No. 07-203-955)	8
07-203-951	Adapter, 0.5 for rotor (Cat. No. 07-203-955)	8
07-203-950	Power adapter, 24V	1



Corning® LSE™ High Speed Microcentrifuge

The Corning LSE high speed microcentrifuge features an easy-to-use, digital control interface, and high-speed performance for quick nucleic acid and protein separations. Two control knobs are used to precisely set rotor speed and run time, and parameters are shown on the easy-to-read LED displays. Press the “Speed/G-force” knob to toggle the display between rpm and calculated g-force.

The LSE high speed microcentrifuge incorporates a brushless drive and unique air cooling system to both reduce noise and minimize sample heating even during prolonged runs at maximum speed.

- ▶ Fast acceleration to a maximum speed 13,300 rpm/16,300 x g
- ▶ Complete with easy access, 24 x 1.5/2.0 mL rotor
- ▶ Precise, digital control system
- ▶ Set and view rotor speed in rpm or g-force
- ▶ Quiet and cool running, even at maximum speed

Fisher Scientific Cat. No.	Description	Voltage	Plug Type	Speed (rpm)	Weight	Dimensions (H x W x D)	Qty/Cs
10-320-806	LSE high speed microcentrifuge	120V, 50/60Hz	US	500 - 13,300	18 lbs. (8.1 kg)	9.25 x 11.5 x 8.5 in. (23.5 x 29.3 x 21.6 cm)	1

Accessories

Fisher Scientific Cat. No.	Description	Qty/Pk
10-320-802	Individual adaptors for 0.5/0.4 mL tubes	6
10-320-803	Individual adaptors for 0.2 mL tubes	6

Corning® LSE™ Compact Centrifuge

The Corning LSE compact centrifuge is a space saving centrifuge ideal for use in life science and industrial research labs.

Four angle rotors are available for this centrifuge, including an innovative combination rotor designed by Corning to allow for greater versatility. This multi-purpose rotor can accommodate various tube sizes including a 5 mL microcentrifuge tube, as well as round and conical bottom 15 mL and 50 mL centrifuge tubes. Tubes are inserted at an increased fixed angle to allow for improved efficiency of cellular pelleting. An equal g-force is applied to the samples when spinning 15 mL and 50 mL tubes simultaneously. In addition, the LSE compact centrifuge can accommodate a swing-out rotor for 6 x 5 mL.

The centrifuge's control panel features a large digital display and a convenient turn knob for setting parameter values. An internal microprocessor maintains precise control over operation with ten levels of acceleration and deceleration and a speed range from 200 rpm to 6,000 rpm. For safety considerations, the centrifuge is equipped with an electronic lid lock system, over speed protection, and an automatic shut off imbalance detection system.

- ▶ Maximum capacity: 6 x 50 mL
- ▶ Maximum speed: 6,000 rpm/4,185 x g
- ▶ Accepts both conical and round bottom tubes
- ▶ Space saving footprint: 11" x 14.6" x 10"



Fisher Scientific Cat. No.	Description	Voltage	Plug Type	Speed (rpm)	Weight (kg)	Dimensions (L x W x D)	Qty/Cs
07-201-417	LSE compact centrifuge	120V, 50/60Hz	US	200 - 6,000	33 lbs. (15 kg)	11 x 14.6 x 10.2 in. (28 x 37 x 26 cm)	1

Rotors

Fisher Scientific Cat. No.	Description	Max. Speed (rpm)	Max. RCF	Qty/Cs
07-201-418	LSE 6 x 50 mL fixed angle rotor	6,000	3,820	1
07-201-419	LSE 12 x 15 mL fixed angle rotor	6,000	4,180	1
07-201-420	LSE 6 x 5 mL swing-out rotor	3,500	1,450	1
07-201-421	LSE 18 x 1.5 mL fixed angle rotor	6,000	2,930	1
07-201-619	LSE combination rotor for 5, 15, and 50 mL tubes	6,000	3,820	1

Adapters

Fisher Scientific Cat. No.	Description	Qty/Cs
07-201-422	LSE adapters for 10 and 15 mL tubes in 50 mL rotor	6
07-201-423	LSE adapters for 5 and 7 mL tubes in 50 mL rotor	6
07-201-424	LSE adapters for 5, 7, and 10 mL tubes in 15 mL rotor	6



6 x 50 mL fixed angle rotor (Cat. No. 07-201-418)



12 x 15 mL fixed angle rotor (Cat. No. 07-201-419)



6 x 5 mL swing-out rotor (Cat. No. 07-201-420)



18 x 1.5 mL fixed angle rotor (Cat. No. 07-201-421)



Combination rotor (Cat. No. 07-201-619)

Agitation Equipment

Corning® LSE™ Vortex Mixer



The Corning LSE variable speed vortex mixer provides fast, efficient mixing with minimal vibration. The unit features a powerful, counter-balanced motor drive, and continuous or “touch” mix modes. A range of accessories are available for all common sample tubes and containers.

- ▶ Variable speed for gentle to vigorous mixing
- ▶ Optimized counter balance for minimal vibration
- ▶ Lightweight and portable
- ▶ Includes cup head for all standard microtubes and centrifuge tubes
- ▶ Mix a variety of tubes and plates with optional accessory heads
- ▶ Touch and continuous mix modes



Accessory heads for Corning LSE vortex mixer

Fisher Scientific Cat. No.	Description	Voltage	Plug Type	Speed (rpm)	Weight	Dimensions (L x W x D)	Qty/Cs
10-320-807	LSE vortex mixer	120V, 50/60Hz	US	0 - 3,400	4.8 lbs. (2.2 kg)	5.5 x 6.3 x 5.1 in. (14 x 16 x 13 cm)	1

Accessories

Fisher Scientific Cat. No.	Description	Qty/Cs
07-201-794	Optional head, 3 inch, for processing larger numbers of tubes	1
07-201-795	Optional head for 24 x 1.5/2.0 mL tubes, 24 x 0.5 mL tubes, and 32 x 0.2 mL tubes (or 4 tube strips)	1
07-201-796	Optional head for 1 microplate, or 64 x 0.2 mL tubes, or 8 x 0.2 mL tube strips	1
07-201-797	Optional head for 8 x 15 mL and 8 x 12/13 mm diameter tubes	1
07-201-798	Optional head attachment for 6 x 50 mL tubes	1
07-201-767	Optional head for 12 x 1.5/2.0 mL tubes, held horizontally	1
07-201-768	Optional head for 4 x 15 mL tubes, held horizontally	1
07-201-769	Optional head for 2 x 50 mL tubes, held horizontally	1

Corning LSE Digital Microplate Shaker



The Corning LSE digital microplate shaker features digital control of shaking speed and run time. A single control knob is used to set parameters, and values are shown on a large 3-digit display. A sturdy base encloses the motor for quiet, vibration-free operation.

The included stainless steel platform accommodates up to 4 microplates (standard or deep well), and the shaker is safe for use in temperature controlled environments from 4°C to 65°C.

- ▶ Large capacity – process up to 4 microplates
- ▶ 3 mm orbit for resuspending, homogenizing, or vortexing
- ▶ Large digital display with single-knob control of speed time
- ▶ Suitable for cold room or incubator use

Fisher Scientific Cat. No.	Description	Voltage	Plug Type	Speed (rpm)	Weight	Dimensions (L x W x D)	Qty/Cs
10-320-814	LSE digital microplate shaker	120V, 50/60Hz	US	100 - 1,400	9.5 lbs. (4.3 kg)	6.6 x 10.98 x 6 in. (16.8 x 27.9 x 15.3 cm)	1

Corning® LSE™ Low Speed Orbital Shaker



The Corning LSE low speed orbital shaker includes a 30 x 30 cm platform and is ideal for staining and destaining gels, washing blots and general mixing applications. Speed can be set from 3 to 60 rpm and the timer can be set for up to 2 hours or for continuous operation.

- ▶ Ideal for staining and washing of fragile gels
- ▶ Gentle motion prevents foaming of liquids
- ▶ Simple analog control with easy-turn knobs
- ▶ 19 mm orbit for blotting, gel staining, and general mixing
- ▶ Safe for cold room and incubator use

Fisher Scientific Cat. No.	Description	Voltage	Plug Type	Speed (rpm)	Weight	Dimensions (L x W x D)	Qty/Cs
10-320-813	LSE low speed orbital shaker	120V, 50/60Hz	US	3 - 60	11 lbs. (5 kg)	10 x 12.6 x 6.3 in. (25.5 x 32 x 16 cm)	1

Corning LSE Orbital Shaker



Orbital shaker with optional clamps and flasks

The Corning LSE orbital shaker meets a variety of shaking and mixing applications. A powerful brushless motor and counter-balanced shaker mechanism provides smooth operation for years of trouble-free use. Different platforms (order separately) are available and are easily interchangeable.

- ▶ Two stainless steel platform options
- ▶ 19 mm orbit for aeration of cultures and staining gels
- ▶ Large digital display with single-knob control
- ▶ Digital control of shaking speed and time
- ▶ Safe for cold room or incubator use
- ▶ Maximum capacity: 4 x 1L, 5 x 500 mL, 9 x 250 mL, or 16 x 125 mL

Fisher Scientific Cat. No.	Description	Voltage	Plug Type	Speed (rpm)	Weight	Dimensions (L x W x D)	Qty/Cs
10-320-808	LSE orbital shaker	120V, 50/60Hz	US	20 - 300	16 lbs. (7.3 kg)	10.1 x 12.5 x 5 in. (25.6 x 31.8 x 12.7 cm)	1

Accessories

Fisher Scientific Cat. No.	Description	Qty/Cs
10-320-809	Flat platform with rubber mat	1
10-320-810	Flask clamp platform (without clamps)	1
07-201-770*	Clamp for 25 mL flask	1
07-201-771*	Clamp for 50 mL flask	1
07-201-772*	Clamp for 125 mL flask	1
10-320-811*	Clamp for 250 mL flask	1
10-320-812*	Clamp for 500 mL flask	1
07-201-773*	Clamp for 1L flask	1

* Also fits the 49L and 71L shaking incubators, see pages 13 and 14.

Corning® LSE™ Platform Rocker



The Corning LSE Platform Rocker is a compact yet high capacity rocker that is ideal for western blotting and general mixing applications.

- ▶ Low profile and compact size (11 lbs./5 kg)
- ▶ 11-pound load capacity
- ▶ Non-slip rubber pads to prevent sample containers from moving during operation
- ▶ Double platform model available for increased capacity
- ▶ 5-year warranty



Fisher Scientific Cat. No.	Description	Platform	Voltage	Speed (Tilts/min.)	Weight	Dimensions (L x W x H)	Qty/Cs
07-202-200	LSE platform rocker	Single	115V, 50/60Hz	5 - 120	11.7 lbs. (5.3 kg)	12.8 x 14.2 x 5.7 in. (32.5 x 36 x 14.5 cm)	1
07-202-201	LSE platform rocker	Single	230V, 50/60Hz	5 - 120	11 lbs. (5 kg)	12.8 x 14.2 x 5.7 in. (32.5 x 36 x 14.5 cm)	1
07-202-202	LSE platform rocker	Double	115V, 50/60Hz	5 - 120	12.7 lbs. (5.8 kg)	12.8 x 14.2 x 5.7 in. (32.5 x 36 x 14.5 cm)	1
07-202-203	LSE platform rocker	Double	230V, 50/60Hz	5 - 120	12.7 lbs. (5.8 kg)	12.8 x 14.2 x 5.7 in. (32.5 x 36 x 14.5 cm)	1

Corning LSE Digital Vortexer



The Corning Digital Vortexer is a multipurpose shaker dedicated to a variety of shaking and mixing applications. The interchangeable platforms accommodate many different sample containers such as flasks, bottles, tube racks, microplates, boxes, and dishes.

- ▶ Three versatile platform options (available separately)
- ▶ Compact design with easy-access control panel
- ▶ Non-slip rubber mat to keep containers in place
- ▶ Safe for cold room or incubator use
- ▶ 5-year warranty



Fisher Scientific Cat. No.	Description	Voltage	Speed (rpm)	Weight	Dimensions (L x W x H)	Qty/Cs
07-202-204	LSE digital vortexer	115V/60Hz	100 - 1200	4.4 lbs. (2 kg)	10.3 x 13.3 x 5.1 in. (26.2 x 33.7 x 13 cm)	1
07-202-205	LSE digital vortexer	230V/50Hz	100 - 1200	4.4 lbs. (2 kg)	10.3 x 13.3 x 5.1 in. (26.2 x 33.7 x 13 cm)	1
07-202-206	Platform for four microplates	-	-	-	-	1
07-202-207	Platform with non-slip rubber mat	-	-	-	-	1
07-202-208	Spring loaded platform for flasks, bottles, or tube racks	-	-	-	-	1



Platform for four microplates (Cat. No. 07-202-206)



Platform with non-slip rubber mat (Cat. No. 07-202-207)



Spring loaded platform for flasks, bottles, or tube racks (Cat. No. 07-202-208)

Constant Temperature Equipment

Corning® LSE™ Benchtop Shaking Incubator



Truly a benchtop style, the lid on the Corning benchtop shaking incubator has a low pivot point which provides a space-saving size sure to fit on the lab bench and under shelves. Each unit includes a software package, which provides the option of saving data to an external computer or monitoring rpm and temperature throughout runs. The maximum capacity is 4 x 1L flasks.

Specifications

Temperature Range	Ambient +5°C to +70°C
Operation Temperature Range	4°C to 65°C
Shaker Speed	20 to 300 rpm
Shaker Timer	1 minute to 99 hours or continuous
Temperature Increments	0.1°C
Speed Increments	1 rpm
Platform Dimensions	11.8 x 11.8 in. (30 x 30 cm)
Dimensions (W x D x H)	14.6 x 20.9 x 15.7 in. (37 x 53 x 40 cm)
Weight	43 lbs. (19.5 kg)
Height Lid Open	21.7 in. (55 cm)
Communication Port	USB to monitor temperature and rpm



Universal platform
(Cat No. 07-202-159)



Plastic clamps
(Cat Nos. 07-202-164
/165/166/167)

Fisher Scientific Cat. No.	Description	Qty/Cs
07-202-157	LSE Benchtop shaking incubator with platform, 120V	1
07-202-158	LSE Benchtop shaking incubator with platform, 230V (EU plug)	1
07-202-159	Universal platform, 30 x 30 cm	1
07-202-160	Petri dish shelf	1
07-202-161	Sticky mat, 150 x 150 x 30 mm	1
07-202-162	Microtiter hotel, holds maximum 3 microplates	1
07-202-163	Combination tube holder, 6 x 15/50 mL tubes	1
07-202-164	Plastic clamp, 125 mL	1
07-202-165	Plastic clamp, 250 mL	1
07-202-166	Plastic clamp, 500 mL	1
07-202-167	Plastic clamp, 1000 mL	1
07-202-182	Clamp for 2,000 mL flask (for use with 71L shaking incubator only)	1
07-202-171	Universal Spring loaded clamp platform	1

Corning LSE 49L Shaking Incubator



This cabinet-style incubator has a compact footprint and can also be stacked to maximize space efficiency. The built in orbital shaker accepts a large assortment of platforms and clamps that can accommodate flasks, Petri dishes, and test tube racks. The maximum capacity is 4 x 1L flasks. For accessories, see page 13.

Specifications

Chamber Volume	49L/1.7 cu. ft.
Temperature Range/Display	Ambient +5° to 80°C in 0.1°C increments/digital
Temperature Uniformity/Accuracy	±0.25°C/±0.1°C
Shaker Speed	20 to 400 rpm (maximum 300 rpm when stacked)
Shaker Timer	0 to 99 minutes or continuous
Shaker Orbit	19 mm
Flask Capacity	4 x 1L, 5 x 500 mL, 9 x 250 mL, 16 x 125 mL
Construction	Interior: Mirrored stainless steel Exterior: Cold rolled steel
Chamber (W x D x H)	13.5 x 14.75 x 15 in. (34.3 x 37.5 x 38.1 cm)
Exterior (W x D x H)	23 x 19.25 x 22.25 in. (42.5 x 55 x 58 cm)
Weight	83 lbs. (37.7 kg)



Universal spring loaded clamp platform (Cat. No. 07-202-171)

Fisher Scientific Cat. No.	Description	Qty/Cs
07-202-151	Corning® LSE™ Shaking incubator, 49 Liters, 120V	1
07-202-152	Corning LSE Shaking incubator, 49 Liters, 230V (EU and UK plug)	1
07-202-168	Flask clamp platform, pre-drilled	1
07-202-169	Flat platform with nonslip rubber mat (300 x 300 mm)	1
07-202-170	Double flat platform with non-slip rubber mat (300 x 300 mm)	1
07-202-171	Universal spring-loaded clamp platform	1
07-202-172	Shelf, full, for Cat. Nos. 07-202-151 and 07-202-152	1
07-202-173	Stacking adapter for Cat. Nos. 07-202-151 and 07-202-152	1

Corning LSE 71L Shaking Incubator

This high performance shaking incubator has a full size glass door and internal light that allows easy viewing of samples without disturbing the chamber contents. Mechanical convection provides a safe, stable temperature environment and fast chamber temperature recovery after opening the door. The maximum capacity is 4 x 2L/6 x 1L flasks.



Specifications

Chamber Volume	71L/2.5 cu. ft.
Temperature Range/Display	Ambient +5° to 80°C
Temperature Uniformity/Accuracy	±0.2°C at 37°C
Temperature Display	0.1°C
Shaker Speed	20 to 300 rpm
Shaker Orbit	19 mm
Shaker Timer	0 to 99 minutes or continuous
Dimensions (W x D x H)	Chamber: 17.4 x 15.6 x 16 in. (44.2 x 39.6 x 40.6 cm) Exterior: 22.6 x 21.4 x 25 in. (57.4 x 54.4 x 63.5 cm)
Weight	140 lbs. (63.6 kg)

Fisher Scientific Cat. No.	Description	Qty/Cs
07-202-153	LSE Shaking incubator, 71L, 120V	1
07-202-154	LSE Shaking incubator, 71L, 230V (EU and UK plug)	1
07-202-174	Shaking platform pre-drilled for flask clamps	1
07-202-175	Flat shaker platform with non-slip rubber mat (390 x 330 mm)	1
07-202-176	Platform with 4 x 2L flask clamps	1
07-202-177	Platform with 6 x 1L flask clamps	1
07-202-178	Platform with 8 x 500 mL flask clamps	1
07-202-179	Platform with 12 x 250 mL flask clamps	1
07-202-180	Platform with 20 x 125 mL flask clamps	1
07-202-181	Platform with 30 x 50 mL flask clamps	1
07-202-171	Universal spring-loaded clamp platform	1
07-202-182	Clamp for 2,000 mL flask (for use with 71L shaking incubator only) 1	1
07-202-183	Rack holder for 15 mL test tubes	1
07-202-184	Rack holder for 50 mL test tubes	1
07-202-185	Shelf, full, for Cat. Nos. 07-202-153 and 07-202-154	1



Cat. No. 07-202-175



Cat. No. 07-202-176



Cat. No. 07-202-177



Cat. No. 07-202-178



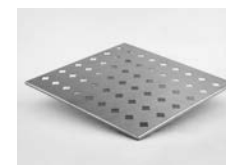
Cat. No. 07-202-179



Cat. No. 07-202-181



Cat. Nos. 07-202-183/184



Cat. No. 07-202-185



Corning® LSE™ 6 Liter Digital Water Bath

The Corning LSE Digital Water Bath is constructed from corrosion-resistant stainless steel and can accommodate up to 6 liters of water or can serve as a dry bath when using thermal beads.

- ▶ Compact design
- ▶ Stainless steel cover to retain heat and minimize evaporation
- ▶ Powerful 500W heater programmed by LED digital controller
- ▶ Precise temperature control by hydraulic thermostat

Specifications

Chamber capacity	6L
Chamber construction	Stainless steel
Chamber maximum load	20 lbs. (9.09 kg)
Temperature range	Ambient +5°C to 99°C
Exterior dimensions (W x D x H)	14.9 x 11.4 x 9.0 in. (12.9 in. with cover) 38 x 29 x 23 cm (33 cm with cover)
Chamber dimensions	12.6 x 6.7 x 6.9 in. (32 x 17 x 18 cm)
Weight	19 lbs. (8.6 kg)

Fisher Scientific Cat. No.	Description
07-202-155	Digital water bath, 6L, 120V
07-202-156	Digital water bath, 6L, 230V (EU and UK plug)

Corning LSE Digital Dry Bath Heater

The Corning Digital Dry Bath Heaters are available in single, dual, and four block configurations (blocks not included, sold separately) and provide a broad temperature range up to 150°C, which makes them useful for a variety of applications in molecular biology, histology, clinical, environmental, and industrial laboratories. They have been designed to incorporate the best combination of features including block capacity, dual displays, and an external temperature probe that gives life science researchers the confidence and efficiency they need when working with precious samples.

- ▶ Single, dual, and four block capacity to maximize sample processing (blocks not included, sold separately)
- ▶ Dual display allows for easy monitoring of temperature and time
- ▶ USB connectivity enables traceability of data
- ▶ Molded block chamber provides excellent temperature uniformity
- ▶ 3-year warranty

Specifications

Fisher Scientific Cat. No.	07-203-007, 07-203-011, 07203-016
Dimensions	
Single and dual block	8.3 x 12.4 x 4.7 in. (21 x 29 x 12 cm)
Four block	8.3 x 16.3 x 4.7 in. (21 x 39 x 12 cm)
Capacity	1, 2, 4 blocks
Temperature Range	Ambient +5°C to 150°C
Temperature Accuracy	±0.3°C
Temperature Uniformity	±0.2°C
Temperature Increments	0.1°C
Digital Display	Dual
External Temperature Probe	Yes, optional accessory
Chamber Construction	Uniformly molded
Block Lid	Yes, included
Interface	USB
Certifications	CE/TUV/CSA



Single block digital dry bath heater



Double block digital dry bath heater



Four block digital dry bath heater



Digital dry bath heaters

Fisher Scientific Cat. No.	Description	Block Capacity	Voltage	Plug	Weight	Dimensions (L x W x H)	Qty/Cs
07-203-007	LSE digital dry bath heater	Single	120V	US	7.0 lbs. (3.2 kg)	8.3 x 12.4 x 4.7 in. (21 x 29 x 12 cm)	1
07-203-011	LSE digital dry bath heater	Dual	120V	US	7.0 lbs. (3.2 kg)	8.3 x 12.4 x 4.7 in. (21 x 29 x 12 cm)	1
07-203-016	LSE digital dry bath heater	Four	120V	US	9.6 lbs. (4.4 kg)	8.3 x 16.3 x 4.7 in. (21 x 39 x 12 cm)	1
07-203-008	LSE digital dry bath heater	Single	230V	EU	7.0 lbs. (3.2 kg)	8.3 x 12.4 x 4.7 in. (21 x 29 x 12 cm)	1
07-203-013	LSE digital dry bath heater	Dual	230V	EU	7.0 lbs. (3.2 kg)	8.3 x 12.4 x 4.7 in. (21 x 29 x 12 cm)	1
07-203-017	LSE digital dry bath heater	Four	230V	EU	9.6 lbs. (4.4 kg)	8.3 x 16.3 x 4.7 in. (21 x 39 x 12 cm)	1
07-203-009	LSE digital dry bath heater	Single	230V	UK	7.0 lbs. (3.2 kg)	8.3 x 12.4 x 4.7 in. (21 x 29 x 12 cm)	1
07-203-014	LSE digital dry bath heater	Dual	230V	UK	7.0 lbs. (3.2 kg)	8.3 x 12.4 x 4.7 in. (21 x 29 x 12 cm)	1
07-203-018	LSE digital dry bath heater	Four	230V	UK	9.6 lbs. (4.4 kg)	8.3 x 16.3 x 4.7 in. (21 x 39 x 12 cm)	1
07-203-010	LSE digital dry bath heater	Single	100V	JP	7.0 lbs. (3.2 kg)	8.3 x 12.4 x 4.7 in. (21 x 29 x 12 cm)	1
07-203-015	LSE digital dry bath heater	Dual	100V	JP	7.0 lbs. (3.2 kg)	8.3 x 12.4 x 4.7 in. (21 x 29 x 12 cm)	1
07-203-019	LSE digital dry bath heater	Four	100V	JP	9.6 lbs. (4.4 kg)	8.3 x 16.3 x 4.7 in. (21 x 39 x 12 cm)	1

Accessories



Digital dry bath heater accessories

Fisher Scientific Cat. No.	Description	Qty/Cs
07-201-774	Single block, 48 x 0.2 mL PCR tubes or 6 x 0.2 mL strips	1
07-201-840	Single block, 20 x 2.0 mL tubes	1
07-201-841	Single block, 24 x 0.5 mL tubes	1
07-201-842	Single block, 24 x 1.5 mL tubes	1
07-201-775	Single block, 35 x 6 mm tubes	1
07-201-776	Single block, 20 x 10 mm tubes	1
07-201-777	Single block, 20 x 12 mm tubes	1
07-201-778	Single block, 20 x 13 mm tubes	1
07-201-779	Single block, 12 x 15 mL centrifuge tubes	1
07-201-780	Single block, 12 x 16 mm tubes	1
07-201-781	Single block, 12 x 17 mm tubes	1
07-201-782	Single block, 6 x 20 mm tubes	1
07-201-783	Single block, 6 x 25 mm tubes	1
07-201-784	Single block, 5 x 50 mL centrifuge tubes (for single block unit only)	1
07-201-785	Single block, 96-well PCR microplate, skirted or nonskirted	1
07-201-786	Dual block, 96-well microplate or 4 slides (for dual block unit only)	1
07-201-787	Dual block, 96-well PCR microplate, skirted, or nonskirted (for dual block unit only)	1
07-201-788	Dual block, 384-well PCR microplate (for dual block unit only)	1

Corning® Digital Hot Plates, Stirring Hot Plates, and Stirrers

Corning digital hot plates, stirrers, and stirring hot plates are made with the same durability and quality Corning has been putting into Pyroceram® top products since 1964. All models include a Pyroceram top.



Model PC-400D



Model PC-420D



Model PC-410D

- ▶ Twin display stirring hot plate shows both temperature and stirring speed on separate digital displays to ensure accuracy
- ▶ Temperature accuracy within $\pm 2^{\circ}\text{C}$ and stirring speeds at $\pm 5\%$ of the speed setting you choose
- ▶ Digital displays indicate when set temperature and stirring speeds are reached
- ▶ Safety indicators – power button and hot top indicators warn if unit is plugged in or is too hot to touch
- ▶ Angled front panel and large knobs minimize damage from spills
- ▶ PC-400D/410D/420D top plate size: 5 x 7 in. (12.7 x 17.8 cm)
- ▶ PC-600D/610D/620D top plate size: 10 x 10 in. (25.4 x 25.4 cm)
- ▶ 2-year warranty

Digital Hot Plates

Fisher Scientific Cat. No.	Model	Voltage	Temperature Range	Dimensions (L x W x D)
11-500-152	PC-400D	120V/60Hz	5°C - 550°C	4.3 x 7.7 x 11 in. (10.8 x 19.7 x 28 cm)
11-500-153	PC-600D	120V/60Hz	5°C - 550°C	4.6 x 7.7 x 15.4 in. (11.75 x 19.7 x 39.1 cm)
07-770-150	PC-400D	230V/50Hz	5°C - 550°C	4.3 x 7.7 x 11 in. (10.8 x 19.7 x 28 cm)
07-770-153	PC-600D	230V/50Hz	5°C - 550°C	4.6 x 7.7 x 15.4 in. (11.75 x 19.7 x 39.1 cm)
07-770-102	PC-400D	100V/60Hz	5°C - 550°C	4.3 x 7.7 x 11 in. (10.8 x 19.7 x 28 cm)
07-770-103	PC-600D	100V/60Hz	5°C - 550°C	4.6 x 7.7 x 15.4 in. (11.75 x 19.7 x 39.1 cm)
07-770-108	PC-400D	230V/50Hz	5°C - 550°C	4.3 x 7.7 x 11 in. (10.8 x 19.7 x 28 cm)
07-770-109	PC-600D	230V/50Hz	5°C - 550°C	4.6 x 7.7 x 15.4 in. (11.75 x 19.7 x 39.1 cm)

Digital Stirring Hot Plates

Fisher Scientific Cat. No.	Model	Voltage	Temperature/ Stir Range (rpm)	Dimensions (L x W x D)
11-500-150	PC-420D	120V/60Hz	5°C - 550°C/60 - 1,150	4.3 x 7.7 x 11 in. (10.8 x 19.7 x 28 cm)
07-250-140 [†]	PC-420D	120V/60Hz	5°C - 550°C/60 - 1,150	4.3 x 7.7 x 11 in. (10.8 x 19.7 x 28 cm)
11-500-151	PC-620D	120V/60Hz	5°C - 550°C/60 - 1,150	4.6 x 7.7 x 15.4 in. (11.75 x 19.7 x 39.1 cm)
07-250-141 [†]	PC-620D	120V/60Hz	5°C - 550°C/60 - 1,150	4.6 x 7.7 x 15.4 in. (11.75 x 19.7 x 39.1 cm)
07-770-152	PC-420D	230V/50Hz	5°C - 550°C/60 - 1,150	4.3 x 7.7 x 11 in. (10.8 x 19.7 x 28 cm)
07-770-155	PC-620D	230V/50Hz	5°C - 550°C/60 - 1,150	4.6 x 7.7 x 15.4 in. (11.75 x 19.7 x 39.1 cm)
07-770-100	PC-420D	100V/60Hz	5°C - 550°C/60 - 1,150	4.3 x 7.7 x 11 in. (10.8 x 19.7 x 28 cm)
07-770-101	PC-620D	100V/60Hz	5°C - 550°C/60 - 1,150	4.6 x 7.7 x 15.4 in. (11.75 x 19.7 x 39.1 cm)
07-770-106	PC-420D	230V/50Hz	5°C - 550°C/60 - 1,150	4.3 x 7.7 x 11 in. (10.8 x 19.7 x 28 cm)
07-770-107	PC-620D	230V/50Hz	5°C - 550°C/60 - 1,150	4.6 x 7.7 x 15.4 in. (11.75 x 19.7 x 39.1 cm)

[†]07-250-140 and 07-250-141 include the 120V stirring hot plate plus temperature controller, support rod, and stir bar retriever.

Digital Stirrers

Fisher Scientific Cat. No.	Model	Voltage	Stir Range (rpm)	Dimensions (L x W x D)
11-500-154	PC-410D	120V/60Hz	60 - 1,150	4.3 x 7.7 x 11 in. (10.8 x 19.7 x 28 cm)
11-500-155	PC-610D	120V/60Hz	60 - 1,150	4.6 x 7.7 x 15.4 in. (11.75 x 19.7 x 39.1 cm)
07-770-151	PC-410D	230V/50Hz	60 - 1,150	4.3 x 7.7 x 11 in. (10.8 x 19.7 x 28 cm)
07-770-154	PC-610D	230V/50Hz	60 - 1,150	4.6 x 7.7 x 15.4 in. (11.75 x 19.7 x 39.1 cm)
07-770-104	PC-410D	100V/60Hz	60 - 1,150	4.3 x 7.7 x 11 in. (10.8 x 19.7 x 28 cm)
07-770-105	PC-610D	100V/60Hz	60 - 1,150	4.6 x 7.7 x 15.4 in. (11.75 x 19.7 x 39.1 cm)
07-770-110	PC-410D	230V/50Hz	60 - 1,150	4.3 x 7.7 x 11 in. (10.8 x 19.7 x 28 cm)
07-770-111	PC-610D	230V/50Hz	60 - 1,150	4.6 x 7.7 x 15.4 in. (11.75 x 19.7 x 39.1 cm)

Corning® Analog Hot Plates, Stirring Hot Plates, and Stirrers



PC-200 Hot Plates

Corning's exclusive glass-ceramic Pyroceram® top is standard.

- ▶ Micro-chemistry size
- ▶ Hot top indicator light
- ▶ 2-year warranty

Fisher Scientific Cat. No.	Model	Power	Top Size	Temperature	Weight	Dimensions (H x W x D)
11-497-A	PC-200	120V/60Hz/ 253W/2.1A	4" x 5"	77°F - 896°F (25°C - 480°C)	4 lbs. (1.8 kg)	4.4 x 5.8 x 7.3 in. (11.2 x 14.7 x 18.5 cm)



Corning Scholar PC-170 Hot Plate

An economically priced hot plate that has a white enameled steel top plate that provides heat transfer up to 360°C. Dual heat shields dissipate heat and keep the case cool to the touch.

- ▶ Compact, saves on bench space
- ▶ UL/CUL approved
- ▶ 1-year warranty

Fisher Scientific Cat. No.	Model	Power	Top Size	Temperature	Weight	Dimensions (H x W x D)
13-641-564	PC-170	120V/60Hz/ 250W/2.1A	5" x 5"	140°F - 680°F (60°C - 360°C)	3 lbs. (1.3 kg)	4 x 5 x 5 in. (10.2 x 12.7 x 12.7 cm)



PC-220 Hot Plate/Stirrer

Hot plate/stirrer units come with Corning's exclusive Pyroceram® top.

- ▶ Micro-chemistry size
- ▶ Hot top indicator light
- ▶ Glass ceramic top
- ▶ 2-year warranty

Fisher Scientific Cat. No.	Model	Power	Top Size	Stir Range (rpm)	Temperature	Weight	Dimensions (L x W x D)
11-497-6A	PC-220	120V/60Hz/ 283W/2.4A	4" x 5"	60 - 1,100	77°F - 896°F (25°C - 480°C)	5.0 lbs. (2.3 kg)	4.4 x 5.8 x 7.3 in. (11.2 x 14.7 x 18.5 cm)



PC-210 Stirrer

PC-210 stirrers come with Corning's Pyroceram top.

- ▶ Micro-chemistry size
- ▶ 2-year warranty

Fisher Scientific Cat. No.	Model	Power	Top Size	Stir Range (rpm)	Weight	Dimensions (L x W x D)
11-497-3A	PC-210	120V/60Hz/ 33W/0.3A	4" x 5"	60 - 1,100	4.5 lbs. (2 kg)	4.4 x 5.8 x 7.3 in. (11.2 x 14.7 x 18.5 cm)

PC-611 Stirrer



The PC-611 is designed to stir large volumes of liquid with ease. The stirrer is designed for 5 gallon vessels (19L) but can stir up to 10 gallons. This powerful stirring is achieved with a very compact design that conserves bench space. The stirrer uses a magnet that is constructed out of rare earth metals for exceptional coupling strength. The magnet's strength also centers the stir bar quickly inside the vessel. Heavy duty motor and rugged plastic (ABS) top will provide years of reliable service. UL/CUL approved, one year warranty. Special features: The PC-611 achieves vigorous stirring with a more compact unit at a lower cost than competitive units. This high volume stirrer can handle many applications that previously required an overhead stirrer.

Fisher Scientific Cat. No.	Model	Power	Top Size	Stir Range (rpm)	Weight	Dimensions (L x W x D)
11-497-13	PC-611	120V/50-60Hz/ 144W/1.2A	11" x 11"	100 - 1,500	11.0 lbs. (5 kg)	4.8 x 12.0 x 14.4 in. (1.9 x 4.7 x 5.7 cm)

Corning® Scholar PC-171 Stirrer



The Corning Scholar PC-171 stirrer provides compact design, vigorous stirring with alternating current motor for longer life and rugged construction. UL/CUL approved, 1-year warranty.

Fisher Scientific Cat. No.	Model	Power	Top Size	Stir Range (rpm)	Weight	Dimensions (L x W x D)
11-497-22	PC-171	120V/60Hz/ 30W/0.25A	5" x 5"	100 - 1,600	4 lbs. (1.8 kg)	3.2 x 5.0 x 5.0 in. (1.3 x 2 x 2 cm)

SS2I Stirrer



One-position slow speed stirrer with integral control to accommodate up to a 2L vessel. One-position model allows the user to spend less and save valuable bench space compared to multiple-position units. Integral speed control and glass-filled resin platform material.

Fisher Scientific Cat. No.	Model	Power	Speed Range (rpm)	No. Pos.	Nom. Stir Vol. per Pos.	Max. Vessel Diam. (mm)	Dimensions (mm) (L x W x D)	Weight (kg)	Motor Type
11-495-01	SS2I	120V/ 60Hz	10 - 150	1	2L	150	150 x 150 x 70	0.9	DC, stepper

SS10I Stirrer



One-position slow speed stirrer with integral control to accommodate up to a 10L vessel. Smooth reliable stirring at slow speeds helps promote healthy cell growth. Integral speed control and glass-filled resin platform material.

Fisher Scientific Cat. No.	Model	Power	Speed Range (rpm)	No. Pos.	Nom. Stir Vol. per Pos.	Max. Vessel Diam. (mm)	Dimensions (mm) (L x W x D)	Weight (kg)	Motor Type
11-495-02	SS10I	120V/ 60Hz	10 - 150	1	10L	280	260 x 260 x 70	2.6	DC, stepper

SS4I Stirrer



Four-position slow speed stirrer with integral control to accommodate up to four 1L vessels. Multiple positions allow the user to duplicate stirring conditions in up to four vessels. Integral speed control and glass-filled resin platform material.

Fisher Scientific Cat. No.	Model	Power	Speed Range (rpm)	No. Pos.	Nom. Stir Vol. per Pos.	Max. Vessel Diam. (mm)	Dimensions (mm) (L x W x D)	Weight (kg)	Motor Type
11-495-03	SS4I	120V/ 60Hz	10 - 150	4	1L	130	260 x 260 x 70	3	DC, stepper

MP4I, MP5I, and MP9I Multiple Position Stirrers with Integral Control

Corning now offers stirrers that stir up to nine vessels at the same time. These stirring platforms come in 4-, 5-, and 9-position models. The unit's magnets and DC motor provide smooth, well-coupled stirring up to 2,000 rpm. The speed of all positions on the units is set simultaneously with the integral knob. Integral speed control and glass-filled resin platform material.



Fisher Scientific Cat. No.	Model	Power	Speed Range (rpm)	No. Pos.	Nom. Stir Vol. per Pos.	Max. Vessel Diam. (mm)	Dimensions (mm) (L x W x D)	Weight (kg)	Motor Type
11-497-1	MP4I	120V/60Hz	350 - 2,000	4	1L	130	260 x 260 x 70	3.1	DC
11-497-2	MP5I	120V/60Hz	350 - 2,000	5	400 mL	95	260 x 260 x 70	3.2	DC
11-497-3	MP9I	120V/60Hz	350 - 2,000	9	250 mL	75	260 x 260 x 70	3.8	DC

Stir bar, 3/8" x 1"
(Cat. No. 11-494-17)

Stir bar, 3/8" x 2"
(Cat. No. 11-494-19)

Stir bar, 3/4" x 3"
(Cat. No. 13-641-1300)

Stir Bars and Stir Bar Retriever

Corning® magnetic stir bars are polytetrafluoroethylene (PTFE)-coated for increased chemical resistance. The Corning stir bar retriever contains a strong magnet to remove a stir bar from all glass and plastic containers used in the laboratory. The container must be taken off the magnetic stirrer before using the retriever as the high powered magnet in the stirrer cancels out the one in the retriever. The handle is designed for ergonomic and easy retrieval.

Fisher Scientific Cat. No.	Description	Use with Model	Qty/Pk	Qty/Cs
11-494-19	Stir bar, 3/8" x 1"	PC-210/220/410D/420D	1	1
11-494-17	Stir bar, 3/8" x 2"	PC-610D/620D	1	1
13-641-1300	Stir bar, 3/4" x 3"	PC-611	1	1
11-972-50	Magnetic stir bar retriever	All Corning stirrers and hot plate/stirrers	1	1

Temperature Controller and Accessories

When used with the digital hot plate or stirring hot plate, the external temperature controller ensures precision temperature accuracy of the liquid inside the vessel as opposed to the temperature of the hot plate top.

Fisher Scientific Cat. No.	Description	Use with Model
07-250-143*	Temperature controller for digital hot plates and stirring hot plates	PC-400D/420D/600D/620D
07-250-142	Accessory kit Includes: External temperature controller (Cat. No. 07-250-143), 18" support rods (Cat. No. 07-250-144), and stir bar retriever (Cat. No. 11-972-50)	PC-400D/420D/600D/620D
07-250-144	Stainless steel support rod, two 9" (45.7 cm) rods, 5/16" diameter. Rods can be screwed together to 18"	All digital and PC-200/210/220
11-495-24	Stainless steel support rod, 24" (61.0 cm), 7/16" diameter	PC-600D/610D/620D
11-497-10	Stainless steel support rod, 12" (30.5 cm), 5/16" diameter	All digital and PC-200/210/220
07-250-147 [†]	Boss head clamp for use with 5/16" support rod and holding rod	All hot plates with 5/16" or smaller support rod
07-200-350	Holding rod, thermocouple, stainless steel	All hot plates

*Temperature controllers are not available for use with stirrer only units.

[†]Bosshead clamps to support rod; holding rod connects to bosshead. Temperature controller slides into holding rod.



Magnetic stir bar retriever
(Cat. No. 11-972-50)



Digital hot plate accessories

Catalog Number Index

Fisher Scientific – Corning

Fisher Scientific Cat. No.	Corning Cat. No.	Page No.	Fisher Scientific Cat. No.	Corning Cat. No.	Page No.	Fisher Scientific Cat. No.	Corning Cat. No.	Page No.	Fisher Scientific Cat. No.	Corning Cat. No.	Page No.
07-200-56	4876	5	07-201-766	4078	4	07-202-178	480163	14	07-764-708	4082	4
07-200-57	4877	5	07-201-767	480105	10	07-202-179	480164	14	07-764-709	4083	4
07-200-58	4878	5	07-201-768	480106	10	07-202-180	480165	14	07-764-710	4084	4
07-200-59	7605	5	07-201-769	480107	10	07-202-181	480166	14	07-764-711	4085	4
07-200-60	7606	5	07-201-770	480110	11	07-202-182	480167	13	07-764-712	4086	4
07-200-61	7610	5	07-201-771	480111	11	07-202-183	480168	14	07-764-713	4087	4
07-200-127	4870	5	07-201-772	480112	11	07-202-184	480169	14	07-770-100	6797-420D	17
07-200-128	4871	5	07-201-773	480115	11	07-202-185	480170	14	07-770-101	6797-620D	17
07-200-129	4872	5	07-201-774	480116	16	07-202-200	6703	12	07-770-102	6797-400D	17
07-200-130	4873	5	07-201-775	480120	16	07-202-201	6704	12	07-770-103	6797-600D	17
07-200-132	4880	4	07-201-776	480121	16	07-202-202	6705	12	07-770-104	6797-410D	17
07-200-133	4888	4	07-201-777	480122	16	07-202-203	6706	12	07-770-105	6797-610D	17
07-200-350	440141	20	07-201-778	480123	16	07-202-204	6709	12	07-770-106	6798-420D	17
07-200-564	4930	5	07-201-779	480124	16	07-202-205	6710	12	07-770-107	6798-620D	17
07-200-710	4931	5	07-201-780	480125	16	07-202-206	48010	12	07-770-108	6798-400D	17
07-200-988	480200	2	07-201-781	480126	16	07-202-207	48011	12	07-770-109	6798-600D	17
07-201-040	6050	3	07-201-782	480127	16	07-202-208	48012	12	07-770-110	6798-410D	17
07-201-041	6051	3	07-201-783	480128	16	07-202-350	4099	5	07-770-111	6798-610D	17
07-201-042	6052	3	07-201-784	480129	16	07-202-351	4991	5	07-770-150	6796-400D	17
07-201-043	6053	3	07-201-785	480130	16	07-202-352	4992	5	07-770-151	6796-410D	17
07-201-044	6054	3	07-201-786	480131	16	07-202-353	4994	5	07-770-152	6796-420D	17
07-201-045	6055	3	07-201-787	480132	16	07-202-354	4995	5	07-770-153	6796-600D	17
07-201-046	6056	3	07-201-788	480133	16	07-202-355	4996	5	07-770-154	6796-610D	17
07-201-047	6057	3	07-201-789	4079	4	07-202-356	4993	5	07-770-155	6796-620D	17
07-201-048	6058	3	07-201-790	4088	3	07-202-357	4997	5	08-757-313	9016	5
07-201-049	6059	3	07-201-794	480100	10	07-202-453	6066	3	10-320-802	480134	8
07-201-050	6060	3	07-201-795	480101	10	07-202-454	6067	3	10-320-803	480135	8
07-201-051	6061	3	07-201-796	480102	10	07-202-455	6068	3	10-320-804	44069	4
07-201-052	6062	3	07-201-797	480103	10	07-203-007	6785-SB	16	10-320-806	6765-HS	8
07-201-053	6063	3	07-201-798	480104	10	07-203-008	6876-SB	16	10-320-807	9775	10
07-201-054	6064	3	07-201-800	6749	2	07-203-009	6877-SB	16	10-320-808	6780-NP	11
07-201-055	6065	3	07-201-840	480117	16	07-203-010	6878-SB	16	10-320-809	480108	11
07-201-417	6755	9	07-201-841	480118	16	07-203-011	6885-DB	16	10-320-810	480109	11
07-201-418	480136	9	07-201-842	480119	16	07-203-013	6886-DB	16	10-320-811	480113	11
07-201-419	480137	9	07-202-151	6750	14	07-203-014	6887-DB	16	10-320-812	480114	11
07-201-420	480138	9	07-202-152	6752	14	07-203-015	6888-DB	16	10-320-813	4780-FP	11
07-201-421	480139	9	07-202-153	6753	14	07-203-016	6895-FB	16	10-320-814	9780-4	10
07-201-422	480140	9	07-202-154	6754	14	07-203-017	6896-FB	16	11-494-17	400430	20
07-201-423	480141	9	07-202-155	6783	15	07-203-018	6897-FB	16	11-494-19	401435	20
07-201-424	480142	9	07-202-156	6784	15	07-203-019	6898-FB	16	11-495-01	440811	19
07-201-475	6620	6	07-202-157	6790	13	07-203-950	401025	7	11-495-02	440812	19
07-201-476	6621	6	07-202-158	6791	13	07-203-951	6770-RTA.5	7	11-495-03	440814	19
07-201-477	6622	6	07-202-159	480144	13	07-203-952	6770-RTA.20	7	11-495-24	409831	20
07-201-478	6623	6	07-202-160	480145	13	07-203-953	6770-RTA.25	7	11-497-1	440824	20
07-201-479	6624	6	07-202-161	480146	13	07-203-954	6770	7	11-497-2	440825	20
07-201-480	6625	6	07-202-162	480147	13	07-203-955	6770-RT	7	11-497-3	440826	20
07-201-481	6626	6	07-202-163	480148	13	07-203-956	6770-RTS	7	11-497-10	400084	20
07-201-482	6627	6	07-202-164	480149	13	07-250-140	6795-420KIT	17	11-497-13	6795-611	19
07-201-483	6628	6	07-202-165	480150	13	07-250-141	6795-620KIT	17	11-497-22	6795-171	19
07-201-484	6629	6	07-202-166	480151	13	07-250-142	6795KIT	20	11-497-A	6795-200	18
07-201-485	6630	6	07-202-167	480152	13	07-250-143	6795-PR	20	11-497-3A	6795-210	18
07-201-486	6631	6	07-202-168	480153	14	07-250-144	440129	20	11-497-6A	6795-220	18
07-201-487	6632	6	07-202-169	480154	14	07-250-147	440140	20	11-500-150	6795-420D	17
07-201-488	6633	6	07-202-170	480155	14	07-764-700	4070	4	11-500-151	6795-620D	17
07-201-489	6634	6	07-202-171	480156	13	07-764-701	7071	4	11-500-152	6795-400D	17
07-201-490	6635	6	07-202-172	480157	14	07-764-702	4072	4	11-500-153	6795-600D	17
07-201-491	6636	6	07-202-173	480158	14	07-764-703	4073	4	11-500-154	6795-410D	17
07-201-495	4217	6	07-202-174	480159	14	07-764-704	4074	4	11-500-155	6795-610D	17
07-201-496	4218	6	07-202-175	480160	14	07-764-705	47075	4	11-972-50	6970SR	20
07-201-497	4219	6	07-202-176	480161	14	07-764-706	4080	4	13-641-564	6795-170	18
07-201-619	480143	9	07-202-177	480162	14	07-764-707	4081	4	13-641-1300	409000	20

Catalog Number Index

Corning – Fisher Scientific

Corning Cat. No.	Fisher Scientific Cat. No.	Page No.	Corning Cat. No.	Fisher Scientific Cat. No.	Page No.	Corning Cat. No.	Fisher Scientific Cat. No.	Page No.	Corning Cat. No.	Fisher Scientific Cat. No.	Page No.
4070	07-764-700	4	6624	07-201-479	6	6797-410D	07-770-104	17	480111	07-201-771	11
4072	07-764-702	4	6625	07-201-480	6	6797-420D	07-770-100	17	480112	07-201-772	11
4073	07-764-703	4	6626	07-201-481	6	6797-600D	07-770-103	17	480113	10-320-811	11
4074	07-764-704	4	6627	07-201-482	6	6797-610D	07-770-105	17	480114	10-320-812	11
4078	07-201-766	4	6628	07-201-483	6	6797-620D	07-770-101	17	480115	07-201-773	11
4079	07-201-789	4	6629	07-201-484	6	6798-400D	07-770-108	17	480116	07-201-774	16
4080	07-764-706	4	6630	07-201-485	6	6798-410D	07-770-110	17	480117	07-201-840	16
4081	07-764-707	4	6631	07-201-486	6	6798-420D	07-770-106	17	480118	07-201-841	16
4082	07-764-708	4	6632	07-201-487	6	6798-600D	07-770-109	17	480119	07-201-842	16
4083	07-764-709	4	6633	07-201-488	6	6798-610D	07-770-111	17	480120	07-201-775	16
4084	07-764-710	4	6634	07-201-489	6	6798-620D	07-770-107	17	480121	07-201-776	16
4085	07-764-711	4	6635	07-201-490	6	6876-SB	07-203-008	16	480122	07-201-777	16
4086	07-764-712	4	6636	07-201-491	6	6877-SB	07-203-009	16	480123	07-201-778	16
4087	07-764-713	4	6703	07-202-200	12	6878-SB	07-203-010	16	480124	07-201-779	16
4088	07-201-790	3	6704	07-202-201	12	6885-DB	07-203-011	16	480125	07-201-780	16
4099	07-202-350	5	6705	07-202-202	12	6886-DB	07-203-013	16	480126	07-201-781	16
4217	07-201-495	6	6706	07-202-203	12	6887-DB	07-203-014	16	480127	07-201-782	16
4218	07-201-496	6	6709	07-202-204	12	6888-DB	07-203-015	16	480128	07-201-783	16
4219	07-201-497	6	6710	07-202-205	12	6895-FB	07-203-016	16	480129	07-201-784	16
4780-FP	10-320-813	11	6749	07-201-800	2	6896-FB	07-203-017	16	480130	07-201-785	16
4870	07-200-127	5	6750	07-202-151	14	6897-FB	07-203-018	16	480131	07-201-786	16
4871	07-200-128	5	6752	07-202-152	14	6898-FB	07-203-019	16	480132	07-201-787	16
4872	07-200-129	5	6753	07-202-153	14	6970SR	11-972-50	20	480133	07-201-788	16
4873	07-200-130	5	6754	07-202-154	14	7041	07-764-701	4	480134	10-320-802	8
4876	07-200-56	5	6755	07-201-417	9	7605	07-200-59	5	480135	10-320-803	8
4877	07-200-57	5	6765-HS	10-320-806	8	7606	07-200-60	5	480136	07-201-418	9
4878	07-200-58	5	6770	07-203-954	7	7610	07-200-61	5	480137	07-201-419	9
4880	07-200-132	4	6770-RT	07-203-955	7	9016	08-757-313	5	480138	07-201-420	9
4888	07-200-133	4	6770-RTA.20	07-203-952	7	9775	10-320-807	10	480139	07-201-421	9
4930	07-200-564	5	6770-RTA.25	07-203-953	7	9780-4	10-320-814	10	480140	07-201-422	9
4931	07-200-710	5	6770-RTA.5	07-203-951	7	44069	10-320-804	4	480141	07-201-423	9
4991	07-202-351	5	6770-RTS	07-203-956	7	47075	07-764-705	4	480142	07-201-424	9
4992	07-202-352	5	6780-NP	10-320-808	11	48010	07-202-206	12	480143	07-201-619	9
4993	07-202-356	5	6783	07-202-155	15	48011	07-202-207	12	480144	07-202-159	13
4994	07-202-353	5	6784	07-202-156	15	48012	07-202-208	12	480145	07-202-160	13
4995	07-202-354	5	6785-SB	07-203-007	16	400084	11-497-10	20	480146	07-202-161	13
4996	07-202-355	5	6790	07-202-157	13	400430	11-494-17	20	480147	07-202-162	13
4997	07-202-357	5	6791	07-202-158	13	401025	07-203-950	7	480148	07-202-163	13
6050	07-201-040	3	6795-170	13-641-564	18	401435	11-494-19	20	480149	07-202-164	13
6051	07-201-041	3	6795-171	11-497-22	19	409000	13-641-1300	20	480150	07-202-165	13
6052	07-201-042	3	6795-200	11-497-A	18	409831	11-495-24	20	480151	07-202-166	13
6053	07-201-043	3	6795-210	11-497-3A	18	440129	07-250-144	20	480152	07-202-167	13
6054	07-201-044	3	6795-220	11-497-6A	18	440140	07-250-147	20	480153	07-202-168	14
6055	07-201-045	3	6795-400D	11-500-152	17	440141	07-200-350	20	480154	07-202-169	14
6056	07-201-046	3	6795-410D	11-500-154	17	440811	11-495-01	19	480155	07-202-170	14
6057	07-201-047	3	6795-420D	11-500-150	17	440812	11-495-02	19	480156	07-202-171	13
6058	07-201-048	3	6795-420KIT	07-250-140	17	440814	11-495-03	19	480157	07-202-172	14
6059	07-201-049	3	6795-600D	11-500-153	17	440824	11-497-1	20	480158	07-202-173	14
6060	07-201-050	3	6795-610D	11-500-155	17	440825	11-497-2	20	480159	07-202-174	14
6061	07-201-051	3	6795-611	11-497-13	19	440826	11-497-3	20	480160	07-202-175	14
6062	07-201-052	3	6795-620D	11-500-151	17	480100	07-201-794	10	480161	07-202-176	14
6063	07-201-053	3	6795-620KIT	07-250-141	17	480101	07-201-795	10	480162	07-202-177	14
6064	07-201-054	3	6795-PR	07-250-143	20	480102	07-201-796	10	480163	07-202-178	14
6065	07-201-055	3	6795KIT	07-250-142	20	480103	07-201-797	10	480164	07-202-179	14
6066	07-202-453	3	6796-400D	07-770-150	17	480104	07-201-798	10	480165	07-202-180	14
6067	07-202-454	3	6796-410D	07-770-151	17	480105	07-201-767	10	480166	07-202-181	14
6068	07-202-455	3	6796-420D	07-770-152	17	480106	07-201-768	10	480167	07-202-182	13
6620	07-201-475	6	6796-600D	07-770-153	17	480107	07-201-769	10	480168	07-202-183	14
6621	07-201-476	6	6796-610D	07-770-154	17	480108	10-320-809	11	480169	07-202-184	14
6622	07-201-477	6	6796-620D	07-770-155	17	480109	10-320-810	11	480170	07-202-185	14
6623	07-201-478	6	6797-400D	07-770-102	17	480110	07-201-770	11	480200	07-200-988	2

For more specific information on claims, visit the Certificates page at www.corning.com/lifesciences.

Warranty/Disclaimer: Unless otherwise specified, all products are for research use only. Not intended for use in diagnostic or therapeutic procedures. Corning Life Sciences makes no claims regarding the performance of these products for clinical or diagnostic applications.

For a listing of trademarks, visit www.corning.com/clstrademarks. All other trademarks are the property of their respective owners.

Contact us today:

In the United States

Order online: fishersci.com

Fax an order: 1-800-926-1166

Call customer service: 1-800-766-7000

In Canada

Order online: fishersci.ca

Fax an order: 1-800-463-2996

Call customer service: 1-800-234-7437

