



Justrite®

LABORATORY SAFETY



FROM BENCH TO FIELD, JUSTRITE PRODUCTS MAINTAIN SAFETY



Find it at fishersci.com and fishersci.ca

Justrite[®]

Ready to solve your laboratory needs

YOUR BUSINESS IS UNIQUE **JUSTRITE CUSTOMIZED SAFETY PRODUCTS WILL FIT**

When it comes to meeting our customers' needs, Justrite doesn't stop at a standard offering. We welcome the opportunity to make products designed to fit your particular application. Whether it's a safety cabinet, spill containment berm, or HPLC can, our team will deliver it to your specifications. To learn more, visit justrite.com/custom or call 800-798-9250.



SAFETY BY CHANCE? **NOT WITH A JUSTRITE STUD-E™ SURVEY**

Justrite's free consultative and confidential safety survey—known as STUD-E™ for STORAGE, TRANSFER, USE, DISPOSAL, AND EVALUATION of flammable liquids—addresses the inherent concerns with handling volatile hazardous liquids. This helps you prevent fires, protect your people from potential injuries or death, protect the environment to meet sustainability initiatives, and assure compliance to OSHA and EPA regulations. Put our expertise to work and improve your overall safety program by contacting your preferred distributor, or calling us today at 800-798-9250, to arrange your own STUD-E™ safety survey.



LEARN MORE! **GET A COPY OF THE JUSTRITE REDBOOK**

The RedBook! Inside you'll find explanations of the equipment and methods you can use to help minimize the chance of fires caused, or spread by, ignition of flammable and combustible liquids. In addition, check out the latest updates on hazardous materials safety cabinets per NFPA and IFC, safety cabinet venting guidelines, and OSHA liquids classification. For end users, OSHA officers, fire officials, and insurance risk managers, the RedBook is a must-have for anyone concerned about worker protection. Available in printed or electronic formats, go to justrite.com/RedBook to learn more.



JUSTRITE PRODUCTS IN ACTION! **INFORMATIONAL VIDEOS MAKE YOUR JOB EASIER**

Learn more about our products by seeing them put to proper use. Our videos feature some of our latest product introductions, like our new polyethylene cabinet for corrosives, and also informative displays of employing safety cabinets and cans, spill containment berms, and more. Go to justrite.com/videos or YouTube and search for Justrite to view our channel.



Approval and Compliance Key

FM	Tested and approved by FM Approvals	I	Complies with the International Fire Code (IFC)	EN	Complies with European standards EN 14470-1 and EN 14727
UL/ULC	Underwriters Laboratories listed in the U.S. and Canada	A	Complies with NFPA 1 Fire Code - 2012 Edition	E	Complies with Environmental Protection Agency (EPA) Regulations
TÜV	TÜV Technical Inspection Association certified	A9	Complies with NFPA 1 Fire Code - 2009 Edition	S	Supports EPA Spill Prevention, Control and Countermeasures Rule (SPCC)
N	Complies with NFPA* Flammable and Combustible Liquids Code 30	H	Complies with NFPA 400 Hazardous Material Code	V	Validated by the EPA Environmental Technology Verification Program
O	Complies with Occupational Safety and Health Administration (OSHA) Regulations	*National Fire Protection Association			



Using multiple cabinets helps you organize and segregate dangerous liquids.

Sure-Grip® EX Classic Safety Cabinets

Safe, dependable flammable liquid storage and protection

- Independently fire tested and approved by FM Approvals.
- Avoid fines—meet regulations, fire codes, and insurance requirements.

Protect workers, reduce fire risks, and improve productivity by storing flammable fuels and chemicals in code-compliant safety cabinets. Designed to meet OSHA and NFPA 30 standards, Sure-Grip® EX cabinets are constructed of sturdy 18-gauge (1-mm) thick double-wall, welded steel with 1-1/2-in (38-mm) of insulating air space for fire resistance. High-performance, self-latching doors close easily and securely for maximum protection under fire conditions. Fail-safe closing mechanism ensures three-point stainless steel bullet latching system works every time.

For added security, U-Loc™ handle comes with a cylinder lock and key set or accepts an optional padlock. Haz-Alert™ reflective warning labels are highly visible under fire conditions or during power outages when illuminated with a flashlight.

Patented SpillSlope® galvanized steel shelves direct spills to back and bottom of a leakproof sump. They adjust on 3-in (76-mm) centers for versatile storage. Cabinets also feature a leakproof 2-in (51-mm) bottom sump, dual vents with flame arresters, four adjustable self-leveling feet, grounding connector and trilingual warning label. Durable powder-coat finish provides excellent chemical resistance.

Self-closing models also meet the International Fire Code. They shut and latch automatically when a fusible link melts at 165°F (74°C) under fire conditions. Unique, concealed self-closing mechanism offers obstruction-free access to contents. All cabinets are backed by a ten-year warranty.



19-120-2335



19-120-2336



19-120-2333



19-120-2337



Capacity Gallons/Liters	Number of Doors and Style	Dimensions H x W x D		Adjustable Shelves	Approval/Lstg Regulation†	Fisher Model No	Ship Wt lb/kg	
		Exterior	Interior					
30/114	2 door, manual	44 x 43 x 18 in	39.625 x 39.5 x 14.562 in	1	FM,N,O,A	19-120-2333	231/105	
	2 door, self-close	1118 x 1092 x 457 mm	1006 x 1003 x 370 mm			19-120-2334	238/108	
45/170	2 door, manual	65 x 43 x 18 in	60.5 x 39.5 x 14.562 in	2	FM,N,O,A	19-120-2335	311/141	
	2 door, self-close	1651 x 1092 x 457 mm	1537 x 1003 x 370 mm			19-120-2336	313/142	
60/227	2 door, manual	65 x 34 x 34 in	60.5 x 30.75 x 30.34 in			FM,N,O,A	19-120-2337	388/176
	2 door, self-close	1651 x 864 x 864 mm	1537 x 781 x 771 mm				19-120-2338	392/178
90/341*	2 door, manual	65 x 43 x 34 in	60.5 x 39.5 x 30.34 in	FM,N,O,A	19-120-2339	481/218		
	2 door, self-close	1651 x 1092 x 864 mm	1537 x 1003 x 771 mm		19-120-2340			

*OSHA 29CFR 1910.106(d)(3) states that not more than 60 gallons (227L) of Category 1, 2, or 3 flammable liquids, nor more than 120 gallons (454L) of Category 4 flammable liquids may be stored in a safety cabinet. †See inside front cover for Approval and Compliance Key.

Extra Accessories

Description	Fits Cabinet Styles	Dimensions W x D	Model No	Ship Wt lb/kg
SpillSlope® steel shelf	30 & 45 gallon (114 & 170 L) - 43 in W (1092 mm)	39.375 x 14 in (1000 x 356 mm)	17-985-58A	10/5
SpillSlope® steel shelf	30 gallon (114 L) - 36 in W (914 mm)	32.375 x 20 in (822 x 508 mm)	19-822-475	12/5
SpillSlope® steel shelf	60 gallon (227 L) - 34 in W (864 mm)	30.375 x 29 in (771 x 737 mm)	19-159-881	16/7
SpillSlope® steel shelf	90 gallon (341 L) - 43 in W (1092 mm)	39.375 x 29 in (1000 x 737 mm)	19-822-477	21/9



Place Slimline cabinet where floor space is limited.

Sure-Grip® EX Slimline Safety Cabinets

Gain valuable storage space even when floor space is tight

- Welded, 18-gauge (1-mm) steel double wall with 1-1/2-in (38-mm) insulating air space.
- U-Loc™ handle comes with double key set and accepts optional padlock for added security.

Fully compliant cabinets with compact design feature fire-resistant construction for the safe storage of flammable and combustible liquids. Use alone or alongside larger safety cabinets for expanded storage when floor space is limited. The standard Slimline cabinet is 18-in (457-mm) deep and fits flush alongside a 45-gallon (170-L) cabinet. The deep Slimline cabinet is 34-in (864-mm) deep and fits alongside a 60- or 90-gallon (227- or 341-L) cabinet. Both cabinets measure only 23-1/4-in (591-mm) wide.



Use color coding in your storage practices to organize and segregate liquids.

Slimline safety cabinets have all the same features as the larger safety cabinets including, a three-point, self-latching door with self-latching handle, a 2-in (51-mm) leakproof sump, and dual vents with integral flame arresters. Built-in grounding connector allows for proper grounding to reduce static build-up. Cabinets include three SpillSlope® galvanized steel shelves that direct spills to back and bottom into a 2-in (51-mm) leakproof sump. Under fire conditions when illuminated by a flashlight, highly reflective Haz-Alert™ warning labels shine brightly to alert emergency personnel to volatile contents.

Cabinets meet NFPA and OSHA regulations and are FM-approved. Self-closing models also comply with the International Fire Code.



Small cabinet footprint fits in the tightest spaces.



When additional storage space is needed, modular size fits nicely alongside existing cabinets.



Capacity Gal/L	Number of Doors and Style	Dimensions H x W x D		Adj Shelves	Approval/Lstg Regulation†	Yellow Model No	Red Model No	Gray Model No	White Model No	Ship Wt lb/kg
		Exterior	Interior							
22/83 (standard)	1 door, manual	65 x 23.25 x 18 in	60.5 x 20 x 14.56 in	3	FM,N,O,A	19-1960-377	19-822-406	19-822-405	19-822-407	208/94
	1 door, self-close	1651 x 591 x 457 mm	1537 x 508 x 370 mm		FM,N,O,A,I	19-160-387	19-822-409	19-822-408	19-822-410	210/95
54/204 (deep)	1 door, manual	65 x 23.25 x 34 in	60.5 x 20 x 30.34 in		FM,N,O,A	19-822-414	19-822-412	19-822-411	19-822-413	298/135
	1 door, self-close	1651 x 591 x 864 mm	1537 x 508 x 771 mm		FM,N,O,A,I	19-822-418	19-822-416	19-822-415	19-822-417	314/142

†See inside front cover for Approval and Compliance Key.

Extra Accessories

Description	Fits Cabinet Styles	Dimensions W x D	Model No	Ship Wt lb/kg
SpillSlope® steel shelf	22 Gallon (83 L) Slimline	19.625 x 14 in (498 x 356 mm)	17-985-58C	6/3
SpillSlope® steel shelf	54 Gallon (204 L) Deep slimline	19.625 x 29 in (498 x 737 mm)	19-822-482	11/5



Sure-Grip® EX Under Fume Hood Safety Cabinets

Fully compliant and designed for safe storage of solvents and flammables in laboratories

- Welded, 18-gauge (1-mm) steel double-wall with 1-1/2-in (38-mm) insulating air space.
- Back wall vents with built-in flame arresters.
- Stainless steel, 3-point bullet self-latching system.

Perfect for use in laboratories. Cabinets measure 35-3/4-in (908-mm) high to fit under fume hoods, benches or counters. The 4-inch (102-mm) high x 3-in (77-mm) deep toe kick allows the hood user to stand closer, which means less leaning and better ergonomics. Cabinets feature an adjustable SpillSlope® shelf that directs any spills to back and bottom of a leakproof 2-in (51-mm) sump. U-Loc™ handle comes with double key set and accepts optional padlock for added security. Durable powder-coat finish, inside and out, provides maximum chemical resistance. Cabinets come in three colors—safety yellow, stainless silver or light neutral to complement laboratory settings. Single-door cabinets are available in either left or right-hinge door configuration. Highly reflective Haz-Alert™ hazard labels at top and bottom provide easy visibility.

Note: 35-3/4-in (908-mm) height includes leg levelers installed and extended 5/8-in (15.9-mm).



Use these cabinets for the safe storage of flammables under fume hoods, benches or counters.



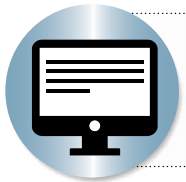
19-822-322



19-822-331



19-822-340



Need a custom-made cabinet?

Configure a cabinet to meet your specific application. Visit justrite.com/custom to learn more. Complete a Custom Cabinet Form (PDF) and get started today.



Capacity Gallons/Liters	Number of Doors and Style	Dimensions H x W x D		Approval/Lstg Regulation†	Yellow Model No	Silver Model No	Lt Neutral Model No	Ship Wt lb/kg
		Exterior	Interior					
15/57	1 door, right hinge, manual	35.75 x 24 x 21.625 in 908 x 610 x 549 mm	26.531 x 20.77 x 18.327 in 674 x 528 x 466 mm	FM,O,A,N	19-822-324	19-822-323	19-822-326	135/61
	1 door, left hinge, manual							
	1 door, right hinge, self-close							
	1 door, left hinge, self-close							
19/72	2 doors, manual	35.75 x 30 x 21.625 in 908 x 762 x 549 mm	26.531 x 26.77 x 18.327 in 674 x 680 x 466 mm	FM,O,A,N	19-822-336	19-822-335	19-822-334	176/80
	2 doors, self-close							
23/87	2 doors, manual	35.75 x 36 x 21.625 in 908 x 914 x 549 mm	26.531 x 32.77 x 18.327 in 674 x 832 x 466 mm	FM,O,A,N	19-822-342	19-822-341	19-822-340	186/84
	2 doors, self-close							
31/117	2 doors, manual	35.75 x 48 x 21.625 in 908 x 1219 x 549 mm	26.531 x 44.77 x 18.327 in 674 x 1137 x 466 mm	FM,O,A,N	19-822-348	19-822-347	19-822-346	240/109
	2 doors, self-close							

†See inside front cover for Approval and Compliance Key.

Extra Accessories

Description	Fits Cabinet Styles	Dimensions W x D	Model No	Ship Wt lb/kg
SpillSlope® steel shelf	15 gallon (57 L)	20.125 x 18 in (511 x 457 mm)	19-822-484	12/5
SpillSlope® steel shelf	19 gallon (72 L)	26.125 x 18 in (664 x 457 mm)	19-822-485	13/6
SpillSlope® steel shelf	23 gallon (87 L)	32.5 x 18 in (826 x 457 mm)	19-822-486	14/6
SpillSlope® steel shelf	31 gallon (117 L)	44.333 x 18 in (1130 x 457 mm)	19-822-487	15/7



Ninety minutes of fire protection provides high level of safety when point-of-use storage is required.



90-Minute EN Safety Storage Cabinets

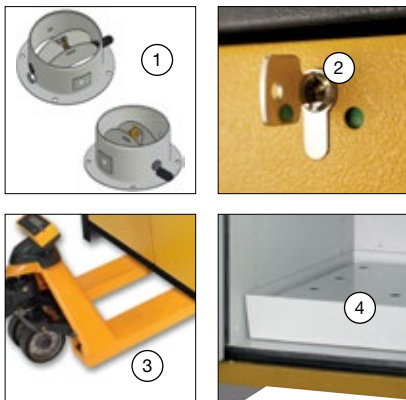
Extreme fire resistance for high risk environments—store flammables with 90-minutes of protection

- EN, OSHA and NFPA compliant—Independently fire tested and approved by FM Approvals and MPA Dresden.
- Hybrid-close door action—manual close doors stop in any position, but self close in the event of a fire to protect contents.
- Security—Independent cylinder locks on each door includes locking state indicator (red/green).

Constructed using multiple layers of fire-resistant gypsum and mineral fiber insulation, cabinet body has a rugged powder coated steel exterior that provides excellent corrosion resistance. Under fire conditions, intumescent strips expand and hermetically seal all gaps to reduce heat entering the cabinet, providing 90-minutes of content protection and extended evacuation time. Hybrid style doors open or close manually and include a damper that adjusts the force needed to move the doors. In the event of a fire, the built-in fusible link system releases to allow automatic closure of doors at 122°F (50°C). Cabinets are EN compliant, FM-approved and meet NFPA 30, NFPA 1, and OSHA standards.

Powder-coat finish steel shelves adjust on 1-1/4-inch (32-mm) increments and have a load capacity of 165-lbs (75-kgs). Shelves with 1-inch (30-mm) high ledge prevent small containers from easily sliding off. Removable bottom sump with detachable perforated insert features a 3-sided lip seal to ensure leaks or spills from shelves are captured at the bottom of the 3-in (76-mm) sump, keeping containers stored in the sump clean and dry.

Haz-Alert™ reflective tri-lingual warning labels are highly visible under fire conditions or during power outages when illuminated with a flashlight. Cabinets also feature adjustable leveling feet, an integrated transport base for easy repositioning (base cover optional), and mandatory air vents per EN 14470-1. Vent butterfly valve closes securely at 158°F (70°C) in the event of a fire. Vents include flame arresters and caps for FM compliance.



1. Two top vents with butterfly valve close automatically at 158 °F (70°C) under fire conditions. Sidewalls inside the cabinet feature upper and lower black air grids with integrated ducts that connect to top vents.
2. Independent cylinder locks on each door includes locking state indicator (red/green).
3. Integrated transport base accepts pallet jack for easy repositioning of empty cabinets. Accepts optional, removable base cover.
4. Removable sump with separate detachable perforated insert allows spills to flow into sump for easy cleaning, and keeps containers elevated to stay clean and dry. Bright interior provides maximum visibility in low light conditions to quickly identify contents.



19-414-052



19-414-053 with optional base cover 19-414-061



Fire Rating (Minutes)	Capacity Gallons/Liters (5 Gallon Can)	Maximum Capacity* (1 Liter Bottle)	Number of Doors and Style	Dimensions H x W x D		Adjustable Shelves	Approval/Lstg Regulation†	Fisher Model No	Ship Wt lb/kg
				Exterior	Interior				
90	30/114	168	2 door, hybrid-close	76.89 x 35.16 x 24.21 in 1953 x 893 x 615 mm	64.85 x 29.5 x 20.55 in 1647 x 750 x 522 mm	3	FM,EN,N,O,A	19-414-052	840/381
	45/170	264		76.89 x 46.97 x 24.21 in 1953 x 1193 x 615 mm	64.85 x 41.34 x 20.55 in 1647 x 1050 x 522 mm			19-414-053	1016/461

*Achieved through the use of additional shelves, maximum capacity is an estimate and may vary depending upon container size. Check with local authority for maximum allowable quantity restrictions. †See inside front cover for Approval and Compliance Key.



30-Minute EN Safety Storage Cabinets

Safely store and segregate flammables—30 minutes of extreme fire-resistance

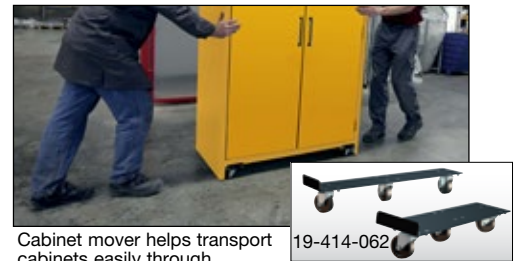
- EN, OSHA and NFPA compliant—Independently fire tested and approved by FM Approvals and MPA Dresden.
- Hybrid-close door action—manual close doors stop in any position, but self close in the event of a fire to protect contents.

Designed to provide 30-minutes of fire resistance, attractive two-toned yellow cabinet is constructed with a body of melamine resin and flame retardant special plates, and a steel door front covered by a textured, durable powder-coat finish. Under fire conditions, special intumescent protection strips expand and seal hermetically to close gaps between the door(s) and frame to reduce heat entering the cabinet. Hybrid style door(s) operate manually and stop in any position, but in the event of a fire, the built-in fusible link system will melt and release to allow automatic closure of door(s) at 122°F (50°C). Cabinets are EN compliant, FM-approved and meet NFPA 30, NFPA 1, and OSHA standards.

Cabinets have many of the same features as the 90-minute model, including leakproof, removable bottom sump with perforated insert, adjustable powder-coat finish steel shelves with 1-inch (30-mm) lip and load capacity of 165-lbs (75-kgs), Haz-Alert™ warning label, and a ground connection. Air vents close securely at 158°F (70°C) in the event of a fire and include flame arresters and caps. Independent cylinder lock on door(s) provide added security. Bright interior color offers maximum visibility to stored goods. Integrated transport base makes it easy to reposition empty cabinets. Accepts removable base cover (optional).



Position single-door extreme fire resistance cabinets where space is limited. Easily add a second cabinet if storage needs increase.



Cabinet mover helps transport cabinets easily through doorways and spaces where a pallet jack is not practical.



19-414-050



19-414-052 with optional base cover 19-414-059



19-414-056



19-414-055



19-414-057



19-414-058



Fire Rating (Minutes)	Capacity Gallons/Liters (5 Gallon Can)	Maximum Capacity* (1 Liter Bottle)	Number of Doors and Style	Dimensions H x W x D		Adjustable Shelves	Approval/Lstg Regulation†	Fisher Model No	Ship Wt lb/kg
				Exterior	Interior				
30	30/114	168	1 door, hybrid-close	76.65 x 34.02 x 24.41 in 1947 x 864 x 620 mm	64.02 x 29.5 x 20.44 in 1626 x 750 x 519 mm	3	FM,EN,N,O,A	19-414-050	507/230
	45/170	264	2 door, hybrid-close	76.65 x 45.83 x 24.41 in 1947 x 1164 x 620 mm	64.02 x 41.34 x 20.44 in 1626 x 1050 x 519 mm			19-414-052	622/282

*Achieved through the use of additional shelves, maximum capacity is an estimate and may vary depending upon container size. Check with local authority for maximum allowable quantity restrictions. †See inside front cover for Approval and Compliance Key.

Extra Accessories

Description	Fits Cabinet Styles	Dimensions	Model No	Ship Wt lb/kg
Steel shelf, powder-coated	30 and 90 Minute - 30 gallon (114 L)	W x D: 29.21 x 17.3 in (742 x 435 mm)	19-414-054	15/7
	30 and 90 Minute - 45 gallon (170 L)	W x D: 41.02 x 17.3 in (1042 x 435 mm)	19-414-055	11/5
Polypropylene tray	30 and 90 Minute - 30 gallon (114 L)	H x W x D: 3.47 x 29.13 x 17.09 in (88 x 740 x 434 mm)	19-414-056	6/3
Polyethylene tray	30 and 90 Minute - 45 gallon (170 L)	H x W x D: 1.97 x 40.95 x 16.93 in (50 x 1040 x 430 mm)	19-414-057	
Base cover	30 Minute - 30 gallon (114 L)	H x W: 3.43 x 30.95 in (87 x 786 mm)	19-414-058	5/2
	30 Minute - 45 gallon (170 L)	H x W: 3.43 x 42.76 in (87 x 1086 mm)	19-414-059	7/3
	90 Minute - 30 gallon (114 L)	H x W: 3.35 x 32.21 in (85 x 818 mm)	19-414-060	3/2
	90 Minute - 45 gallon (170 L)	H x W: 3.35 x 44.02 in (85 x 1118 mm)	19-414-061	4/2
Cabinet mover - Set of 2	30 and 90 Minute - 30 & 45 gallon (114 & 170 L)	H x W x D: 3.54 x 5.51 x 23.62 in (90 x 140 x 600 mm)	19-414-062	20/9



Safety Cabinets for Hazardous Materials

Identify and safely store hazardous materials such as acids, bases, oxidizers, or toxic materials

High-performance cabinets feature all-welded, 18-gauge (1-mm) double-walled steel construction with 1½-inch (38-mm) air space, a 2-inch (51-mm) leakproof sump, U-Loc™ handle, dual vents with flame arresters, adjustable self-leveling feet, and ground wire connector. Application-specific labels identify contents to safely store and segregate incompatible chemicals.

Self-closing door(s) with a three-point, stainless steel bullet latching system securely close for maximum protection under fire conditions. They self-index and self-latch to close in sequence to ensure a tight closure from top to bottom.

For increased chemical resistance against leaks or drips, steel SpillSlope® adjustable shelves include a polyethylene tray that sits on top of the shelf, as well as a separate polyethylene liner for the bottom sump. The popular 30-gal (114-L) cabinet includes an extra polyethylene work tray that can be placed on top of cabinet for a handy work surface.

Cabinets are FM-approved (except for 4-gal /15-L models), and come with a ten-year warranty.

Segregate and identify hazardous materials to ensure a safe working environment.



Encased self-closing mechanism provides obstruction-free access to top shelf space. Fusible link melts at 165°F (74°C) to automatically close door(s) under fire conditions.



Capacity Gallons/Liters	Number of Doors and Style	Dimensions H x W x D		Adjustable Shelves	Approval/Lstg Regulation†	Fisher Model No	Ship Wt lb/kg
		Exterior	Interior				
Classic Safety Cabinets							
30/114	2 door, self-close	44 x 43 x 18 in 1118 x 1092 x 457 mm	39.625 x 39.5 x 14.56 in 1006 x 1003 x 370 mm	1	FM,H,A,I	19-159-700	240/109
45/170	2 door, self-close	65 x 43 x 18 in 1651 x 1092 x 457 mm	60.5 x 39.5 x 14.56 in 1537 x 1003 x 370 mm	2		19-159-701	303/137
60/227	2 door, self-close	65 x 34 x 34 in 1651 x 864 x 864 mm	60.5 x 30.75 x 30.34 in 1537 x 781 x 771 mm			19-414-800	370/168
90/341	2 door, self-close	65 x 43 x 34 in 1651 x 1092 x 864 mm	60.5 x 39.5 x 30.34 in 1537 x 1003 x 771 mm	19-414-801		436/198	
Countertop Safety Cabinet							
4/15	1 door, self-close	22 x 17 x 17 in 559 x 432 x 432 mm	18.5 x 13.75 x 13.75 in 470 x 349 x 349 mm	1	H,A,I	19-414-802	69/31
Compac Safety Cabinets							
12/45	1 door, self-close	35 x 23.25 x 18 in 889 x 591 x 457 mm	30.5 x 20 x 14.56 in 775 x 508 x 370 mm	1	FM,H,A,I	19-414-803	123/56
15/57	1 door, self-close	44 x 23.25 x 18 in 1118 x 591 x 457 mm	39.625 x 20 x 14.56 in 1006 x 508 x 370 mm			19-414-804	156/70
Piggyback Safety Cabinets							
12/45	2 door, self-close	18 x 43 x 18 in 457 x 1092 x 457 mm	13 x 39.5 x 14.56 in 330 x 1003 x 370 mm	0	FM,H,A,I	19-414-805	132/60
17/64	2 door, self-close	24 x 43 x 18 in 610 x 1092 x 457 mm	19.5 x 39.5 x 14.56 in 495 x 1003 x 370 mm	1		19-414-806	174/79
Slimline Safety Cabinets							
22/83 (standard)	1 door, self-close	65 x 23.25 x 18 in 1651 x 591 x 457 mm	60.5 x 20 x 14.56 in 1537 x 508 x 370 mm	3	FM,H,A,I	19-414-807	211/96
54/204 (deep)	1 door, self-close	65 x 23.25 x 34 in 1651 x 591 x 864 mm	60.5 x 20 x 30.34 in 1537 x 508 x 771 mm			19-414-808	314/142
Undercounter Safety Cabinet							
22/83	2 door, self-close	35 x 35 x 22 in 889 x 889 x 559 mm	27.375 x 31.75 x 18.75 in 695 x 806 x 476 mm	1	FM,H,A,I	19-414-809	197/89

Accessories — For extra shelves, see page 13. †See inside front cover for Approval and Compliance Key.

ChemCor® Lined Safety Cabinets for Hazardous Materials

Seamless ChemCor® finish protects interior cabinet surfaces from rust and corrosion

For superior protection against corrosion from drips and off-gassing from harsh chemicals, use ChemCor® lined safety cabinets. They feature a unique, flame-coated thermoplastic finish on interior doors, shelves, walls, ceiling, and sump. The non-porous, seam-free surface eliminates the need for corrosion-prone rivets or fasteners. It resists staining and cleans up easily. Popular 30-gal (114-L) cabinet includes a separate polyethylene work tray that can be placed on top of cabinet for a handy work surface.

Cabinets are FM-approved (except for 4-gal/15-L models), and come with a ten-year warranty.



Store small quantities of hazardous materials at point-of-use for quick and easy access.



Label pack includes ten content specific labels.



Capacity Gallons/Liters	Number of Doors and Style	Dimensions H x W x D		Adjustable Shelves	Approval/Lstg Regulation†	Fisher Model No	Ship Wt lb/kg
		Exterior	Interior				
Classic Safety Cabinets							
30/114	2 door, self-close	44 x 43 x 18 in 1118 x 1092 x 457 mm	39.625 x 39.5 x 14.56 in 1006 x 1003 x 370 mm	1	FM,H,A,I	19-414-810	251/114
45/170	2 door, self-close	65 x 43 x 18 in 1651 x 1092 x 457 mm	60.5 x 39.5 x 14.56 in 1537 x 1003 x 370 mm	2		19-414-811	322/146
60/227	2 door, self-close	65 x 34 x 34 in 1651 x 864 x 864 mm	60.5 x 30.75 x 30.34 in 1537 x 781 x 771 mm			19-414-812	400/181
Countertop Safety Cabinet							
4/15	1 door, self-close	22 x 17 x 17 in 559 x 432 x 432 mm	18.5 x 13.75 x 13.75 in 470 x 349 x 349 mm	1	H,A,I	19-414-813	70/32
Compac Safety Cabinets							
12/45	1 door, self-close	35 x 23.25 x 18 in 889 x 591 x 457 mm	30.5 x 20 x 14.56 in 775 x 508 x 370 mm	1	FM,H,A,I	19-414-814	137/62
Piggyback Safety Cabinets							
12/45	2 door, self-close	18 x 43 x 18 in 457 x 1092 x 457 mm	13 x 39.5 x 14.56 in 330 x 1003 x 370 mm	0	FM,H,A,I	19-414-819	142/64
17/64	2 door, self-close	24 x 43 x 18 in 610 x 1092 x 457 mm	19.5 x 39.5 x 14.56 in 495 x 1003 x 370 mm	1		19-414-816	175/79
Slimline Safety Cabinets							
22/83 (standard)	1 door, self-close	65 x 23.25 x 18 in 1651 x 591 x 457 mm	60.5 x 20 x 14.56 in 1537 x 508 x 370 mm	3	FM,H,A,I	19-414-817	211/96
Undercounter Safety Cabinet							
22/83	2 door, self-close	35 x 35 x 22 in 889 x 889 x 559 mm	27.375 x 31.75 x 18.75 in 695 x 806 x 476 mm	1	FM,H,A,I	19-414-818	199/90

Accessories — For extra shelves, see page 13. †See inside front cover for Approval and Compliance Key.



Safely store corrosives in fire-resistant steel safety cabinets.

Sure-Grip® EX Classic Safety Cabinets for Corrosives

Specially designed for safely storing corrosives in laboratories

- Protect laboratories and personnel from damaging corrosives.
- Powder-coat finish specially formulated to resist acids, bases and solvents.

Justrite blue steel safety cabinets for corrosives have the same quality safety features as the cabinets for flammables. All models come with double-wall construction, dual vents, grounding wire connections, adjustable shelves, leakproof sills, three-point self-latching doors and leveling feet. Polyethylene trays fit over galvanized steel shelves and a separate polyethylene liner for the bottom sump helps resist aggressive chemicals. Easily remove the liner for quick cleaning of drips and leaks. The popular 30-gallon (114-L) 2-door cabinets also include an extra polyethylene work tray that can be secured to cabinet top for a handy work surface. An all epoxy baked-on powder-coat finish, inside and out, provides increased chemical resistance. FM-approved.



Using non-flammable corrosives?

See page 21 for quick pouring, translucent polyethylene containers designed to resist acids and caustics.



19-413-823



17-154A

10 Year
Limited Warranty



Capacity Gallons/Liters	Number of Doors and Style	Dimensions H x W x D		Adjustable Shelves	Approval/Lstg Regulation†	Fisher Model No	Ship Wt lb/kg
		Exterior	Interior				
30/114	2 door, manual	44 x 43 x 18 in 1118 x 1092 x 457 mm	39.625 x 39.5 x 14.562 in 1006 x 1003 x 370 mm	1	FM,A9	17-154A	239/108
	2 door, self-close				FM,A9	17-988-445	240/109
	1 bi-fold sliding door, self-close				FM,A9	S04766MF	246/112
45/170	2 door, manual	35 x 36 x 24 in 889 x 914 x 610 mm	30.625 x 32.625 x 21.75 in 778 x 829 x 552 mm	1	FM,A9	19-822-386	215/98
	2 door, self-close				FM,A9	19-413-823	301/137
	1 bi-fold sliding door, self-close				FM,A9	19-822-395	303/137
60/227	2 door, manual	65 x 43 x 18 in 1651 x 1092 x 457 mm	60.5 x 39.5 x 14.562 in 1537 x 1003 x 370 mm	2	FM,A9	19-822-387	323/147
	2 door, self-close				FM,A9	19-159-883	388/176
	1 bi-fold sliding door, self-close				FM,A9	19-159-818	370/168
90/341	2 door, manual	65 x 34 x 34 in 1651 x 864 x 864 mm	60.5 x 30.75 x 30.34 in 1537 x 781 x 771 mm	2	FM,A9	19-822-388	400/181
	2 door, self-close				FM,A9	19-822-397	454/206
	1 bi-fold sliding door, self-close				FM,A9	19-822-398	456/207
					FM,A9	19-822-389	460/209

Accessories — see page 13. †See inside front cover for Approval and Compliance Key.

Sure-Grip® EX Slimline Cabinets for Corrosives

Compact footprint offers versatile storage options

Use Slimline-style cabinets to expand storage capacity—modular size fits nicely alongside existing cabinets. They have all the same features as the larger corrosive safety cabinets including a three-point, self-latching door with U-Loc™ handle, a 2-in (51-mm) leakproof sump, and dual vents with integral flame arresters. For increased corrosion protection, cabinets include polyethylene trays that fit on top of three galvanized steel shelves. Under fire conditions when illuminated by a flashlight, highly reflective Haz-Alert™ warning labels shine brightly to alert emergency personnel to corrosive contents. FM-approved.



19-822-404

19-159-823



Small footprint of Slimline-style cabinets fits the tightest spaces.



Capacity Gallons/Liters	Number of Doors and Style	Dimensions H x W x D		Adjustable Shelves	Approv/Lstg Regulation [†]	Sure-Grip® Model No	Ship Wt lb/kg
		Exterior	Interior				
Slimline Safety Cabinets							
22/83 (standard)	1 door, manual	65 x 23.25 x 18 in 1651 x 591 x 457 mm	60.5 x 20 x 14.56 in 1537 x 508 x 370 mm	3	FM,A9	19-159-720	208/94
	1 door, self-close					19-159-823	210/95
54/204 (deep)	1 door, manual	65 x 23.25 x 34 in 1651 x 591 x 864 mm	60.5 x 20 x 30.34 in 1537 x 508 x 771 mm			19-822-403	298/135
	1 door, self-close					19-822-404	314/142

Accessories — see page 13. †See inside front cover for Approval and Compliance Key.

Sure-Grip® EX Countertop and Compac Cabinets for Corrosives

Make the most of your available space

Countertop and compac cabinets let you customize your work areas and keep your most frequently used fluids close at hand. These specialty cabinets have the same features as our larger cabinets plus galvanized steel shelves with attached polyethylene trays and a separate polyethylene bottom sump liner that can be easily removed for cleaning drips and leaks. Baked-on blue epoxy powder-coat finish—inside and out—resists acids, bases and solvents for added chemical resistance. Compac cabinets are FM-approved.



19-413-871

19-519-719



Capacity Gallons/Liters	Number of Doors and Style	Dimensions H x W x D		Adjustable Shelves	Approv/Lstg Regulation [†]	Fisher Model No	Ship Wt lb/kg	
		Exterior	Interior					
4/15	1 door, manual, countertop	22 x 17 x 17 in 559 x 432 x 432 mm	18.5 x 13.75 x 13.75 in 470 x 349 x 349 mm	1	A9	19-413-871	63/29	
	1 door, self-close, countertop					19-822-393	65/30	
12/45	1 door, manual, compac	35 x 23.25 x 18 in 889 x 591 x 457 mm	30.5 x 20 x 14.562 in 775 x 508 x 370 mm			FM,A9	19-159-719	121/55
	1 door, self-close, compac					FM,A9	19-822-391	123/56
15/57	compac; 1 door manual	44 x 23.25 x 18 in 1118 x 591 x 457 mm	39.625 x 20 x 14.56 in 1006 x 508 x 370 mm			FM,A9	19-413-822	154/70
	compac; 1 door self-close					FM,A9	19-822-392	156/71

Accessories — see page 13. †See inside front cover for Approval and Compliance Key.



Easily expand existing storage capacity by mounting piggyback cabinet on top of Justrite's 30- or 45-gallon cabinet.

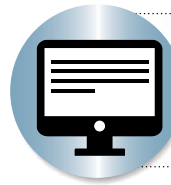
Sure-Grip® EX Piggyback Cabinets for Corrosives

Use on bench tops or add to taller cabinets to meet increased storage needs

- Add up to 17-gallons (64-L) of additional capacity to existing cabinets.
- Compact design for easy stacking.

Create a safe storage area for acids or bases without taking up valuable floor space. Piggyback cabinets are designed to mount on top of 30- and 45-gallon (114- and 170-L), manual or self-closing Sure-Grip® EX cabinets. They can also be used independently and stack easily to provide additional storage. Turn it into a wall-mount cabinet with optional wall mount kit No. 25950.

The piggyback cabinets offer the same protection as Justrite's taller safety cabinets for corrosives. Constructed of sturdy 18-gauge (1-mm) thick double-wall, welded steel, they feature 3-point, self-latching doors that close easily and securely for maximum protection under fire conditions. Leakproof 2-in (51-mm) sump captures dangerous spills. U-Loc™ handle includes double key set and accepts optional padlock for increased security. FM-approved.



Free survey promotes workplace safety . . .

Justrite's *STUD-E™* survey identifies ways to do your job safely and efficiently—visit justrite.com/STUDE to learn more and sign up.



17-985-63B stacked



19-822-394



17-985-63A

10 Year
Limited Warranty



Capacity Gallons/Liters	Number of Doors and Style	Dimensions H x W x D		Adjustable Shelves	Approval/Lstg Regulation†	Fisher Model No	Ship Wt lb/kg
		Exterior	Interior				
12/45	2 door, manual	18 x 43 x 18 in	13 x 39.5 x 14.562 in	0	FM,A9	17-985-63A	130/59
	2 door, self-close	457 x 1092 x 457 mm	330 x 1003 x 370 mm				
17/64	2 door, manual	24 x 43 x 18 in	19.5 x 39.5 x 14.562 in	1	FM,A9	17-985-638	149/68
	2 door, self-close	610 x 1092 x 457 mm	495 x 1003 x 370 mm				

Accessories — see page 13. †See inside front cover for Approval and Compliance Key.

Sure-Grip® EX Undercounter Cabinets for Corrosives

Take advantage of unused undercounter space

- Double-wall 18-gauge (1-mm) construction with 1-1/2-in (38-mm) insulating air space.
- Leakproof 2-in (51-mm) sump safely captures spills.
- U-Loc™ handle includes double key—accepts optional padlock for increased security.

Safely store corrosives under a workbench or lab counter for quick and easy access. These safety cabinets incorporate the same quality features as Justrite flammable cabinets but also include galvanized steel shelves with attached polyethylene trays and a separate polyethylene bottom sump liner that can be easily removed for cleaning drips and leaks. Toe kick allows user to stand closer to counter—less leaning and better ergonomics. Toe kick dimensions are 3.5 in (89 mm) H x 2.5 in (64 mm) D. Baked-on blue epoxy powder-coat finish—inside and out—resists acids, bases and solvents for added chemical resistance. FM-approved.



Self-latching doors include paddle handle with cylinder lock and keys.



10 Year
Limited Warranty

Capacity Gallons/Liters	Number of Doors and Style	Dimensions H x W x D		Adjustable Shelves	Approval/Lstg Regulation†	Fisher Model No	Ship Wt lb/kg
		Exterior	Interior				
22/83	2 door, manual	35 x 35 x 22 in 889 x 889 x 559 mm	27.375 x 31.75 x 18.75 in 695 x 806 x 476 mm	1	FM,A9	17-154C	209/95
	2 door, self-close				FM,A9	19-033-720	212/96

†See inside front cover for Approval and Compliance Key.

Extra Accessories

Equip your safety cabinet with accessories for storage versatility

Justrite galvanized steel shelves hold up to 350-lb (159-kg) and adjust on 3-in (76-mm) centers to meet specific workflow needs. Customize your cabinet by adding shelves to increase storage space and accommodate different sized containers. Place polyethylene trays over shelves for corrosion protection when storing corrosive liquids. Three options are available—combination shelf with poly tray, shelf alone or poly tray alone.

Save floor space and use optional wall hanger assembly on smaller cabinets when wall mounting is desirable. Two kits are available—for 4-gallon (15-liter) and 12- and 17-gallon (45- and 64-liter) Justrite safety cabinets.



19-822-473



17-985-58A



19-413-870

Description	Fits Cabinet Styles	Dimensions W x D	Shelf & Tray Model No	Shelf Only Model No	Tray Only Model No	Ship Wt lb/kg
SpillSlope® steel shelf	4 gallon (15 L) countertop	13.375 x 13 in (340 x 330 mm)	19-822-474	19-822-476	19-822-478	5/2
SpillSlope® steel shelf	12 & 15 gallon (45 & 57 L) compac 22 gallon (83 L) slim	19.625 x 14 in (498 x 356 mm)	19-822-504	17-985-58C	19-822-498	9/4
SpillSlope® steel shelf	22 gallon (83 L) undercounter	31.556 x 18 in (802 x 457 mm)	19-822-490	19-822-488	S04780MF	14/6
SpillSlope® steel shelf	17, 30 & 45 gallon (64, 114 & 170 L) - 43 in W (1092 mm)	39.375 x 14 in (1000 x 356 mm)	19-822-473	17-985-58A	19-413-870	11/5
SpillSlope® steel shelf	54 gallon (204 L) deep slimline	19.625 x 29 in (498 x 737 mm)	—	19-822-483	19-822-506	11/5
SpillSlope® steel shelf	60 gallon (227 L) - 34 in W (864 mm)	30.375 x 29 in (771 x 737 mm)	19-822-489	19-159-881	19-822-507	20/9
SpillSlope® steel shelf	90 gallon (341 L) - 43 in W (1092 mm)	39.375 x 29 in (1000 x 737 mm)	—	19-822-477	19-822-508	—
Wall mount kit	4 gallon (15 L) countertop	—	19-159-321	—	—	4/2
Wall mount kit	12 & 17 gallon (45 & 64 L) piggyback	—	19-822-511	—	—	5/3
Tray for cabinet top	17, 30 & 45 gallon (64, 114 & 170 L) - 43 in W (1092 mm)	43.5625 x 18.5625 in (1106 x 471 mm)	—	—	17-985-85C	6/3

Description	Dimensions W x D	Model No	Ship Wt lb/kg
Label pack (replacement/retrofit) with "Hazardous—Keep Fire Away" warning and 10 content ID labels	—	19-822-467	1/0.45
Single label: "Lithium-Ion Battery Storage Cabinet"	12 in W x 3.5 in H (305 x 89 mm)	19-822-468	1/0.45



Thermoplastic coating provides superior protection against corrosion from drips and off-gassing from harsh chemicals.



19-822-375



19-822-364



19-822-377

ChemCor® Lined Safety Cabinets for Corrosives

Superior corrosion protection combined with fire protection in a single cabinet

- 100% seamless thermoplastic coating inside the cabinet.
- Double-wall, 18-gauge (1-mm) welded steel construction.
- 2-in (51-mm) leakproof containment sump.

Get complete protection from harsh acids and corrosive chemicals plus the durability and fire protection of Justrite steel cabinets in a single unit. Unique, flame-coated, nonporous thermoplastic coating lines walls, ceiling, sump, inside doors, and shelves for superior protection from rust and corrosion. Specifically formulated powder-coat finish on cabinet exterior provides long life and extra resistance to deterioration from harsh chemicals.

All ChemCor® Cabinets include two labels—“Base” or reflective Haz-Alert™ “Acid”—to be placed by the end user. SpillSlope® shelves adjust on 3-in (77-mm) centers to accommodate a wide variety of containers. Three-point stainless steel bullet latch provides fail-safe, positive door closure. U-Loc™ handle comes with double key set and accepts optional padlock for added security. Other features include dual vents with flame arresters, grounding connector, and adjustable leveling feet.

Under fume hood cabinets feature a 4-in (102-mm) high x 3-in (77-mm) deep toe kick that allows the user to stand closer to the hood which means less leaning and better ergonomics. Cabinet height of 35-3/4-in (908-mm) includes leg levelers installed and extended 5/8-in (15.9-mm).

Under counter (22-gal/83-L) free-standing cabinets feature a smaller toe kick that measures 3-1/2-in (89-mm) high x 2-1/2-in (64 mm) deep. Free-standing 30-gallon (114-L) models No. **19-159-704** and **19-159-819** include an extra polyethylene work tray which can be used as a handy work surface on the top of the cabinet.



1. Internal ChemCor® coating guards against deterioration from spills and off-gassing from harsh chemicals. Seam-free, non-porous surface resists stains and cleans easily.
2. Fusible link on self-closing models melts in the event of a fire to automatically close doors if inadvertently left open.



ChemCor® Lined Under Fume Hood Acid Cabinets

Capacity Gal/L	Number of Doors and Style	Dimensions H x W x D		Adjustable Shelves	Approval/Lstg Regulation†	Silver Model No	Blue Model No	Lt Neutral Model No	Ship Wt lb/kg
		Exterior	Interior						
15/57	1 door, right hinge, manual	35.75 x 24 x 21.625 in 908 x 610 x 549 mm	26.531 x 20.77 x 18.327 in 674 x 528 x 466 mm	1	FM,A9	19-822-357	19-822-355	19-822-356	135/61
	1 door, left hinge, manual								
	1 door, right hinge, self-close								
	1 door, left hinge, self-close								
19/72	2 door, manual	35.75 x 30 x 21.625 in 908 x 762 x 549 mm	26.531 x 26.77 x 18.327 in 674 x 680 x 466 mm	1	FM,A9	19-822-366	19-822-364	19-822-365	176/80
	2 door, self-close								
23/87	2 door, manual	35.75 x 36 x 21.625 in 908 x 914 x 549 mm	26.531 x 32.77 x 18.327 in 674 x 832 x 466 mm	1	FM,A9	19-822-373	19-822-371	19-822-372	186/84
	2 door, self-close								
31/117	2 door, manual	35.75 x 48 x 21.625 in 908 x 1219 x 549 mm	26.531 x 44.77 x 18.327 in 674 x 1137 x 466 mm	1	FM,A9	19-822-380	19-822-377	19-822-378	240/109
	2 door, self-close								

†See inside front cover for Approval and Compliance Key.



ChemCor® Lined Acid Cabinets - Free Standing

Capacity Gallons/Liters	Number of Doors and Style	Dimensions H x W x D		Adjustable Shelves	Color	Approval/Lstg Regulation†	Model No	Ship Wt lb/kg
		Exterior	Interior					
30/114	2 door, manual	44 x 43 x 18 in 1118 x 1092 x 457 mm	39.625 x 39.5 x 14.562 in 1006 x 1003 x 370 mm	1	Blue	FM,A9	19-159-704	241/109
	2 door, self-close							
	1 bi-fold sliding, self-close							
45/170	2 door, manual	65 x 43 x 18 in 1651 x 1092 x 457 mm	60.5 x 39.5 x 14.562 in 1537 x 1003 x 370 mm	2	Blue	FM,A9	19-159-718	323/147
	2 door, self-close							
	1 bi-fold sliding, self-close							
60/227	2 door, manual	65 x 34 x 34 in 1651 x 864 x 864 mm	60.5 x 30.75 x 30.34 in 1537 x 781 x 771 mm	2	Blue	FM,A9	19-159-715	388/176
	2 door, self-close							

Slimline Safety Cabinets

22/83	1 door, manual	65 x 23.25 x 18 in 1651 x 591 x 457 mm	60.5 x 20 x 14.562 in 1537 x 508 x 370 mm	3	Blue	FM,A9	19-159-720	211/96
	1 door, self-close							

Countertop and Compac Safety Cabinets

4/15	1 door, manual, countertop	22 x 17 x 17 in 559 x 432 x 432 mm	18.5 x 13.75 x 13.75 in 470 x 349 x 349 mm	1	Blue	A9	19-159-712	68/31
	1 door, self-close, countertop							
12/45	1 door, manual, compac	35 x 23.25 x 18 in 889 x 591 x 457 mm	30.5 x 20 x 14.562 in 775 x 508 x 370 mm	1	Blue	FM,A9	19-159-719	137/62
	1 door, self-close, compac							

Undercounter Safety Cabinets

22/83	2 door, manual	35 x 35 x 22 in 889 x 889 x 559 mm	27.375 x 31.75 x 18.75 in 695 x 806 x 476 mm	1	Blue	FM,A9	19-159-716	200/91
	2 door, self-close							

Piggyback Safety Cabinets

12/45	2 door, manual	18 x 43 x 18 in 457 x 1092 x 457 mm	13 x 39.5 x 14.562 in 330 x 1003 x 370 mm	0	Blue	FM,A9	19-159-721	137/62
	2 door, self-close							
17/64	2 door, manual	24 x 43 x 18 in 610 x 1092 x 457 mm	19.5 x 39.5 x 14.562 in 495 x 1003 x 370 mm	1	Blue	FM,A9	19-159-722	171/78
	2 door, self-close							

†See inside front cover for Approval and Compliance Key.

Extra Accessories

Description	Fits Cabinet Styles	Dimensions W x D	Model No	Ship Wt lb/kg
ChemCor® SpillSlope® steel shelf	15 gallon (57 L) under fume hood	20.125 x 18 in (511 x 457 mm)	19-822-478	12/5
ChemCor® SpillSlope® steel shelf	19 gallon (72 L) under fume hood	26.125 x 18" (664 x 457 mm)	19-822-479	13/6
ChemCor® SpillSlope® steel shelf	23 gallon (87 L) under fume hood	32.5 x 18" (826 x 457 mm)	19-822-480	11/5
ChemCor® SpillSlope® steel shelf	31 gallon (117 L) under fume hood	44.333 x 18" (1130 x 457 mm)	19-822-481	16/7

**Need a custom-made cabinet?**

Configure a cabinet to meet your specific application. Visit justrite.com/custom to learn more. Complete a Custom Cabinet Form (PDF) and get started today.

**For protection when storing harsh, non-flammable corrosives . . .**

Justrite's 100% polyethylene cabinets are the solution—available for undercounter or countertop use. See page 16 for details.



Stack two cabinets for increased storage capacity.



Spacious interior



Handy work surface



Secure storage



Content identification

Polyethylene Cabinets for Corrosive Chemicals

Store acids or bases with confidence in this sturdy, completely metal-free poly cabinet, and never worry about corrosion

- Large interior with adjustable shelf offers high-capacity storage
- Counter-height top doubles as a convenient work surface
- Seamless, leakproof sump captures dangerous corrosive spills

Safely store strong acids such as hydrochloric, sulfuric, or nitric acid; or bases such as sodium, potassium, or calcium hydroxide in this durable, HDPE (high-density polyethylene) cabinet. With no metal parts to corrode, this cabinet holds up to 36, 2.5-liter bottles, and offers chemical resistance against spills or potential damaging vapors when storing acids or bases. The shelf adjusts on 3-inch (76-mm) increments, and has a load capacity of 125-lbs (57-kgs); choose from three positions to optimize container storage. A removable yet sturdy sump cover, which also serves as a bottom shelf, conceals the fully integrated, leakproof sump with an 8.5-gal (32-L) capacity. Recessed channels in shelf and base help direct spills to the back of the cabinet and down into the sump. Three application-specific labels identify contents to safely store and segregate incompatible chemicals — ACID, BASE, and CORROSIVE. Doors open nearly 180 degrees for easy access, engage firmly with the body when closed, and accept a padlock (not included) for added security.

Versatile in any environment, use the cabinet for stand-alone storage and take advantage of the grooved top work surface. The recessed toe-kick allows the user to stand closer to the counter for improved ergonomics. Easily expand capacity without taking up additional floor space by stacking two cabinets—top cabinet offers convenient eye-level access to contents. Four pre-formed vent locations at rear provide a guide for an aftermarket vent kit (not included) in the event the application requires a pressurized vapor removal system.

Free expert advice . . .

Learn more about handling flammables and corrosives by visiting justrite.com. You'll find our RedBook guide, videos, TechTalks and more.



Description	Capacity	Number of Doors	Dimensions H x W x D		Adjustable Shelves	Shelf Load lb/kg	Model No	Ship Wt lb/kg
			Exterior	Interior				
Polyethylene cabinet for corrosive chemicals	Thirty-six 2.5 liter bottles	2 door	35 x 36 x 25 in 889 x 914 x 635 mm	28 x 34 x 20 in 711 x 864 x 508 mm	1	125/57	19-414-063	106/48
Replacement polyethylene center shelf	—	—	33.375 W x 20.375 D in 848 W x 518 D mm	—	—	—	19-414-064	10/5

Wood Laminate Acid Cabinets

Durable and highly chemical-resistant

Safely store highly corrosive liquids such as phenol, nitric acid and sulfuric acid in these wood laminate storage cabinets. Long lasting wood construction along with stainless steel handles and hinges provide exceptional resistance to corrosion from harsh acids. Shelf adjusts on 1-1/4-in (32-mm) centers to accommodate a wide variety of containers. Cabinets include adjustable leg levelers, Haz-Alert™ reflective labels, and double key set for safety and security.

Countertop model 24120 is ideal for smaller quantities used at workbench level. Use the undercounter model 24140 as a free standing piece. It includes a removable, easy-to-clean polyethylene work surface top that is recessed 5/8-in (16-mm) to help contain incidental leaks.



17-985-64A

Capacity	Number of Doors and Style	Dimensions H x W x D		Adjustable Shelves	Model No	WHS	Ship Wt lb/kg
		Exterior	Interior				
Six, 2.5 liter bottles	2 door, countertop	18.5 x 24 x 16 in 470 x 610 x 406 mm	16 x 22.488 x 15.228 in 406 x 571 x 387 mm	0	17-985-62	-	52/24
Thirty-six, 2.5 liter bottles	2 door, stand alone	35.75 x 36 x 22 in 908 x 914 x 559 mm	29.496 x 34.488 x 20.858 in 749 x 876 x 530 mm	1	17-985-64A	-	181/82
Forty-nine, 2.5 liter bottles		60 x 42 x 17.875 in 1524 x 1067 x 454 mm	54.511 x 40.488 x 17.118 in 1385 x 1028 x 435 mm		17-985-64B	276/125	

Note #24140 height dimension includes 0.75-in (19-mm) top. For undercounter usage, remove top for 22-in (559-mm) depth and adjust leg levelers which extend up to 0.75-in (19-mm).

Extra Accessories

Description	Exterior Dimensions W x D	Model No	Ship Wt lb/kg
Wood shelf and clips for 24140	34 x 16.875 in (864 x 429 mm)	19-822-493	18/8
Wood shelf and clips for 24150	40 x 13.875 in (1016 x 352 mm)	17-985-85A	19/9

Solid Polyethylene Acid Cabinets

Sturdy, smooth construction in an attractive design

- Suitable for highly aggressive liquids—no metal parts to corrode.
- Three-point door latch on larger units offer secure closure and vapor control.
- Toe kick on undercounter model allows user to stand closer to counter—less leaning, better ergonomics.



19-413-801

19-413-800



19-413-802

Solid polyethylene white acid cabinets have excellent chemical resistance to handle the most corrosive chemicals. A protective, all-welded bottom sump and a clean, sleek design complement any laboratory settings. Fully welded, liquid-tight 2-in (51-mm) sump contains accidental spills and makes clean up a snap. Shelf on larger units adjust on 3-in (76-mm) center. Door accepts a padlock for security.

Capacity	Number of Doors and Style	Dimensions H x W x D		Adjustable Shelves	Model No	Ship Wt lb/kg
		Exterior	Interior			
Six, 2.5 liter bottles	1 door, countertop	22 x 17 x 17 in 559 x 432 x 432 mm	21.5 x 16.5 x 16.25 in 546 x 419 x 413 mm	-	19-413-800	26/12
Thirty-six, 2.5-liter bottles	2 door, undercounter	35.75 x 36 x 21.75 in 908 x 914 x 552 mm	35.25 x 35.5 x 20.875 in 895 x 902 x 530 mm	1	19-413-801	160/73
Thirty-six, 2.5-liter bottles	2 door, stand alone	36.75 x 36 x 21.75 in 933 x 914 x 552 mm	35.5 x 35.5 x 20.875 in 902 x 902 x 530 mm		19-413-802	

Extra Accessories

Description	Fits Cabinet Sizes	Dimensions W x D	Model No	Ship Wt lb/kg
Solid polyethylene shelf with shelf pegs	36 in (914mm) W	34.75 x 20.5 in (883 x 521 mm)	19-822-505	20/9



Manifold kit provides a convenient, cost effective way to collect waste from multiple HPLC machines.

HPLC Safety Disposal Cans

Quick-disconnect fittings and coalescing carbon filters keep laboratory and personnel safe with a compliant, environmentally-friendly solution to waste collection

Ideal for HPLC waste applications:

- Vapor and fire protection
- Safeguard against accidental spills
- Maximize safety and convenience

Hands-free solvent collection: Solvent flows freely from your process into the container through tubing making it suitable for either pump-fed or gravity-flow HPLC waste methods. Two disconnect fittings, one intake and one vent, eliminate back pressure in liquid flow disposal line and provide controlled handling of vapor.

Durability and safety: Translucent polyethylene container allows quick visual inspection of liquid level. Pouring spout is equipped with a stainless steel flame arrester, which reliably dissipates heat to prevent flashback ignition. Spring-loaded, sealed lid automatically vents to guard against explosion. Control odors with a coalescing/carbon filter.

Quick-Disconnect system: Easy-on, easy-off mechanism offers detachment of the can from the process without leaks, drips or vapor release. Once disconnected, the container is automatically sealed to prevent spills.



Coalescing carbon filter
Optional filters are for use with only round style cans.

Optional manifold.....

Valved quick-disconnect fittings automatically close when decoupled to prevent vapor or liquid release.

Translucent color lets you check liquid level at a glance.

Oval-style maximizes storage space and features one-handed pouring from narrow 1-7/16-in (36-mm) spout.

Stainless-steel fittings offer PTFE O-rings on standard containers. Also available with EPDM or Viton O-ring seals on customized cans.

Easy-carrying handle with fixed position latch keeps spring loaded cover open for convenient pouring during disposal.

Economically priced polypropylene barbed fittings offer EPDM O-rings.

Large 3-5/8-in (92-mm) opening facilitates controlled pouring into larger vessels for proper hazardous waste disposal. Spout is equipped with a stainless steel flame arrester.

Meets OSHA, NFPA and EPA requirements.

Create custom cans, with up to eight ports, for multiple HPLC units. See our custom-can form online at justrite.com/customHPLC



Capacity	Dimensions OD x H	Fitting No 1 for Liquid Intake			Fitting No 2 for Vapor Release			Model No	Ship Wt lb/kg
		Material	O-Ring	Tubing* Size ID	Material	O-Ring	Tubing* Size ID		
1 gallon (4 L) oval can	7.75 x 5.25 x 12.75 in 197 x 133 x 324 mm	Polypropylene	EPDM	0.375 in 10 mm	Polypropylene	EPDM	0.375 in 10 mm	19-052-376	2/1
2 gallon (7.5 L) round can	12 x 14.75 in 305 x 375 mm	Stainless Steel	PTFE		Stainless Steel	PTFE		19-059-379	
2 gallon (7.5 L) round can		Polypropylene	EPDM		Polypropylene	EPDM		19-130-2718	
2 gallon (7.5 L) round can		Stainless Steel	PTFE		Stainless Steel	PTFE		19-040-880	
5 gallon (19 L) round can	12 x 20 in 305 x 508 mm	Polypropylene	EPDM	0.25 in 6 mm	Polypropylene	EPDM	0.25 in 6 mm	19-059-378	7/3
5 gallon (19 L) round can		Stainless Steel	PTFE		Stainless Steel	PTFE		19-160-382	
5 gallon (19 L) round can		Polypropylene	EPDM		Polypropylene	EPDM		19-040-858	
5 gallon (19 L) round can with faucet no. 08916		Stainless Steel	PTFE		Stainless Steel	PTFE		19-822-419	
5 gallon (19 L) round can with faucet no. 08916				0.375 in 10 mm			0.375 in 10 mm	19-822-420	12/6

*Tubing not supplied with containers.

Coalescing Carbon Filters

Use with HPLC cans to minimize odor, and capture 99% of liquid particulates released in the form of gaseous vapor. Vent filter snaps conveniently into the quick-disconnect fitting. Carbon filter cartridge color indicator beads (top portion) changes from purple to black to indicate when replacement is necessary. Replace the coalescing filter (bottom portion) after three or four carbon filter cycles. Use filters with all 2-gallon (7.5-L), 5-gallon (19-L) and custom-built quick-disconnect cans; not for use with oval style can. Meets EPA 40 CFR 264.173.



Filter Replacement Window



19-052-372

19-052-373

Description	Attachment/Use With	Model No	Ship Wt lb/kg
Coalescing/carbon filter combo with stainless steel fittings	Disconnect cans with stainless steel fittings	19-052-373	2/1
Coalescing/carbon filter combo with polypropylene fittings	Disconnect cans with polypropylene fittings	19-052-372	

Carbon Filter Replacements

Description	Attachment/Use With	Model No	Ship Wt lb/kg
Colormetric/carbon filter 3-Pack replacements	28162 or 28161 Coalescing/carbon filter	19-052-374	2/1

NOTE: When using HPLC carbon filter with FM approved Justrite safety disposal can, the Justrite safety disposal container has not been FM approved or tested in assembly with the HPLC filter attached. However, the container does comply with US OSHA 1910 and NFPA Code 30 requirements, both with and without the HPLC filter. Do not transport safety container while carbon filter is attached.



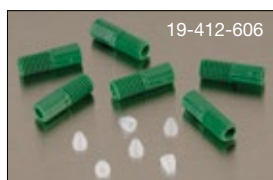
19-052-374

HPLC PTFE Manifold and Compression Fittings

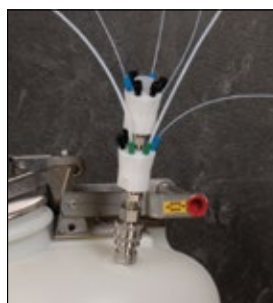
Enables up to six waste lines (per manifold) from HPLC processes to be fed into a single intake fitting. Safety container with manifold installed is OSHA compliant and meets NFPA Code 30. Use on round containers; not for use on oval style can.



19-412-603



19-412-606



Manifold no. 19-412-602 with stacker no. 19-412-604 and tubing connector package nos. 19-412-605 and 19-412-606.

Description	Attachment/Use With	Model No	Ship Wt lb/kg
PTFE manifold with stainless steel fitting	Containers with stainless steel fittings	19-412-602	2/1
PTFE manifold with polypropylene fitting	Containers with polypropylene fittings	19-412-603	
PTFE manifold with stainless "stacker" connector	28177 or 28178	19-412-604	
OD 0.0625 in hard wall ETFE tubing compression fittings with ferrules (package of six - blue)		19-412-605	
OD 0.125 in hard wall ETFE tubing compression fittings with ferrules (package of six - green)		19-412-606	
OD 2 mm hard wall ETFE tubing compression fittings with ferrules (package of six - yellow)		19-822-310	
OD 2.5 mm hard wall ETFE tubing compression fittings with ferrules (package of six - orange)		19-822-311	
OD 3 mm hard wall ETFE tubing compression fittings with ferrules (package of six - red)		19-822-312	

Polytetrafluoroethylene (PTFE) is a synthetic fluoropolymer. Ethylene tetrafluoroethylene (ETFE) is a fluorine based plastic.



19-413-824 with 19-059-378

Spill Basin

Durable polyethylene basin keeps work area clean around HPLC cans and captures any inadvertent leakage from HPLC inflow tubes.

Description	Dimensions W x L X H	Model No	Ship Wt lb/kg
5 gallon (19 L)	14.875 x 14.875 x 7.625 379 x 379 x 194 mm	19-413-824	4/2



Need a stainless steel manifold?

For containers with stainless steel fittings, use a stainless steel manifold that accepts 4 waste lines. Visit our website and search model no. 28168.



Large opening with cap held open provides convenient filling and pouring.

Liquid Disposal Safety Cans

A better solution for the containment of liquid flammable or corrosive waste

- Durable poly in safety red or translucent white to easily detect liquid level.
- Current-carrying, patented carbon insert embedded in the container allows for proper grounding.

High-density polyethylene (HDPE) disposal cans provide superior chemical resistance and leak protection. Spring-loaded sealed cap, normally closed, automatically vents between 3 and 5 psig (0.2 and 0.35 bar). Stainless steel handle and hardware with latch-catch system hold the cap in the open position for easy filling and pouring. Large-mouth opening features a built-in stainless steel flame arrester to guard against outside ignition. The broad-base design provides stability and resists accidental tip over.

Model numbers 19-822-428 and 19-822-429 with built-in polyethylene fill gauge indicator pops up to warn you that the container is almost full.



17-985-72D



19-822-428



19-159-312



19-822-427

Description and Capacity	Dimensions OD x H	Approv/Lstg Regulation†	Red Model No	White Model No	Ship Wt lb/kg
2 gallon (7.5 L) polyethylene can with stainless steel hardware with 08530 fill gauge built-in	12 x 14.75 in 305 x 375 mm	—	19-822-428	—	7/3
2 gallon (7.5 L) polyethylene can with stainless steel hardware		FM	17-985-72D	19-159-313	
5 gallon (19 L) polyethylene can with stainless steel hardware			17-985-72E	19-159-312	
5 gallon (19 L) polyethylene can with stainless steel hardware with 08530 fill gauge built-in	12 x 20 in 305 x 508 mm	—	19-822-429	—	11/5
5 gallon (19 L) polyethylene can with stainless steel hardware and faucet		FM	—	19-822-427	12/6
Replacement flame arrester, stainless steel	—	—	19-812-459	19-812-459	2/1

†See inside front cover for Approval and Compliance Key.

Countertop Lab Tray

Polyethylene tray catches drips or spills and keeps counter clean and uncontaminated. Slightly curved edge and ribbed bottom keeps containers from sitting in pooled liquid.

Description	Nominal Dimensions L x D	Model No	Ship Wt lb/kg
Countertop lab tray	31.125 x 18.5 in 791 x 470 mm	S04780FM	4/2



Squeeze Bottles

Squeeze bottles made of polyethylene with a stainless steel wire, provide safe dispensing of flammable liquids directly on small components or subassemblies with a minimum of over-spray. Squeezing the bottle produces a fine stream of liquid. Stem can be shaped to dispense into hard-to-get areas. Squeeze bottles are intended for daily use only.

Store partially filled squeeze bottles in a closed container...
Visit our website and search for model no. 19-037-060 mixing tank. It holds nine 16 oz. or seven 32 oz. squeeze bottles.



Simply squeeze bottle to target liquid directly onto cleaning cloths or parts.

Description and Capacity	Dimension OD x H	Model No	Ship Wt lb/kg
1 pint (0.5 L) polyethylene squeeze bottle with flexible dispensing tube, translucent	3 x 7.5 in 76 x 191 mm	17-183	2/1
1 quart (1 L) polyethylene squeeze bottle with flexible dispensing tube, translucent	3.5 x 9.125 in 89 x 232 mm	17-183-1	

Bottle Jacket

Two-piece bottle jacket provides added protection of a polyethylene cover around chemical glass bottles. Jacket acts as a shock absorber to minimize breakage and spills due to bumps or falls. One-gallon (4-liter) bottle fits into the bottom half of the jacket and lid twists on securely for safe pouring. Translucent color aids in detecting liquid level.

Description and Capacity	Dimension OD x H	Model No	Ship Wt lb/kg
Translucent polyethylene bottle jacket for 1 gallon (4 L) bottles	6 x 14 in 152 x 356 mm	17-985-79	1/1



17-985-79

Self-Closing Containers for Non-flammable Corrosives

Improve safety and ensure containment with secure laboratory containers

Translucent high-density polyethylene resists acids and caustics. The 2- to 5-gallon (7.5- to 19-L) sizes have fixed position on handle, which allows lid to stay open for easy filling. Spring-close cap provides a tight seal. Flame arrester-free spout allows quick pouring of non-flammable corrosives. Oval containers have trigger handle for one-handed pouring and make the most of storage capacity.



17-985-89A



17-985-890



17-985-73

Description and Capacity	Dimensions OD x H	Dimensions Spout Dia	Model No	Ship Wt lb/kg
1 gallon (4 L) oval polyethylene container with stainless steel hardware	4.625 x 7.625 x 12.75 in 117 x 194 x 324 mm	1.45 in 37 mm	17-985-73	2/1
2 gallon (7.5 L) wide mouth polyethylene container with stainless steel hardware	12 x 14.75 in 305 x 375 mm	3.625 in 92 mm	17-985-890	7/3
2.5 gallon (9.5 L) polyethylene container with stainless steel hardware	10.75 x 15.25 in 273 x 387 mm	1.45 in 37 mm	17-985-89A	
5 gallon (19 L) wide mouth polyethylene container with stainless steel hardware	12 x 20 in 305 x 508 mm	3.625 in 92 mm	17-985-89D	9/4



Use smaller capacity safety cans with flame arresters to safely dispense and store chemicals found in laboratories.

Type I Poly Safety Cans

Chemical-resistant HDPE cans offer safe storage for flammable corrosives

Designed with a durable one-piece body construction, these safety cans stand up to tough acids and heat. Consistent color throughout the HDPE reduces visible scratches and provides color-resistance to reduce chemical leaching, making them suitable for most high purity liquids. The containers resist dents, punctures, and chips to withstand abusive environments. The self-closing cap, pressure-relief mechanism and flame arrester work together to prevent ignition sources from entering without restricting liquid flow in or out of the can. All cans feature stainless steel hardware and flame arrester. FM-approved.



Carbon Insert

A patented conductive current-carrying carbon insert is embedded into the rib of containers, completing a ground path between the cover assembly and the flame arrester. When used with a grounding strip, this provides proper grounding and prevents the creation of a static arc during filling or pouring.



17-177B

17-177A



17-177B with 04-664-13



19-413-825

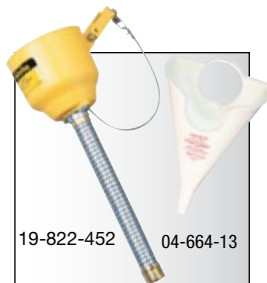


17-985-72B



Description and Capacity	Dimensions W x L x H	Dimensions OD x L	Approv/Lstg Regulation†	Red Model No	White Model No	Ship Wt lb/kg
0.5 gallon (2 L) oval polyethylene safety can	4.625 x 7.625 x 9.5 in 117 x 194 x 241 mm	—	FM	17-177A	S04780FM	2/1
1 gallon (4 L) oval polyethylene safety can	4.625 x 7.625 x 12.75 in 117 x 194 x 324 mm			17-177B	19-413-825	
2.5 gallon (9.5 L) round polyethylene safety can	10.75 x 14.25 in 273 x 362 mm		FM, UL	17-985-72A	—	4/2
5 gallon (19 L) round polyethylene safety can	12.75 x 16 in 324 x 406 mm			17-985-72B	—	9/4

†See inside front cover for Approval and Compliance Key.



Optional funnels aid in pouring.

Accessories

Description and Capacity	Dimensions W x L x H	Dimensions OD x L	Approv/Lstg Regulation	Model No	Ship Wt lb/kg
Polyethylene funnel for oval cans	—	0.562 x 6.5 in 14.3 x 165 mm	—	04-664-13	1/1
Bolt-on funnel with galvanized hose for 2.5 gallon (9.5 L) and 5 gallon (19 L) cans		1 x 13.5 in 25 x 343 mm		19-822-452	

Safety Dispensing Cans

With all the benefits of our classic Type I safety cans, these cans come with faucets to make them the choice of lab professionals for safe dispensing of hazardous liquids into small flasks and beakers. Fill spouts have self-closing pressure-relief caps and stainless steel flame arresters. Self-closing faucets provide trouble-free dispensing. Cans fitted with the 19-018573 faucet offer more controlled dispensing, while faucet 17-986-54 provides a greater flow. All faucets are brass except faucet model number 08919 is stainless steel.

Polyethylene Safety Dispensing Can has superb corrosion protection, and a unique current-carrying carbon insert embedded into the container allows for proper grounding.

Steel & Poly Shelf Cans have a faucet mounted 2-in (51-mm) above the bottom to eliminate the need to lift the cans during dispensing.

Steel Tilt Cans have a faucet on top and the can rests in a sturdy metal cradle. Cradle base measures 13-13/16 x 14-in (351-mm x 356-mm).

All styles are FM-approved.



Tilt cradle allows can to swing forward for dispensing while holding can securely on bench top.



Need to dispense from a can stored in a safety cabinet?
Visit our website and search for model no. 19-822-445—a shorter shelf for easy dispensing.



19-413-849

19-143-847



19-822-437



19-111-082



Description and Capacity	Can Dimensions OD x H	Approv/Lstg Regulation [†]	Red Can Model No	Yellow Can Model No	Ship Wt lb/kg	
2.5 gallon (9.5 L) steel safety shelf can with bottom faucet 08540	11.75 x 11.5 in 298 x 292 mm	FM	19-822-431	19-822-432	7/3	
2.5 gallon (9.5 L) steel safety shelf can with bottom faucet 08902			19-822-435	19-822-436		
5 gallon (19 L) steel safety shelf can with bottom faucet 08540	11.75 x 16.875 in 298 x 429 mm		19-413-847	19-822-433	8/4	
5 gallon (19 L) steel safety shelf can with bottom faucet 08902			19-413-848	19-822-437		
5 gallon (19 L) tilt steel safety can with top faucet 08540 and stand	11.75 x 15.875 in 298 x 403 mm		19-822-430			
5 gallon (19 L) tilt steel safety can with top faucet 08902 and stand		FM, UL	19-413-849		14/6	
5 gallon (19 L) steel safety can with top faucet 08540	11.75 x 15.875 in 298 x 403 mm	FM	19-822-434		8/4	
5 gallon (19 L) steel safety can with top faucet 08902			19-822-438			
1 gallon (4 L) oval polyethylene safety shelf can with self-close stainless steel faucet 08919	7.25 x 11.5 in 184 x 292 mm			19-018-432	—	3/1
5 gallon (19 L) polyethylene safety shelf can with self-close bottom faucet 08540	11.5 x 17 in 292 x 432 mm			19-111-082		10/4
5 gallon (19 L) polyethylene tilt safety can with self-close faucet 08540 and stand	11.5 x 17 in 292 x 432 mm			19-822-444		16/7
5 gallon (19 L) polyethylene safety can with self-close top faucet 08540			19-822-441		10/4	

[†]See inside front cover for Approval and Compliance Key.



Oily Waste Cans

Dispose of oil-soaked rags and prevent fires caused by stray sparks or spontaneous combustion

Rags and cloths soaked with solvents, thinners, linseed oil, combustible adhesives and other flammable liquids present a serious fire risk when improperly discarded. Lid opens to no more than 60 degrees and stays closed when not in use, isolating contents from fire sources and limiting oxygen to virtually eliminate the risk of spontaneous combustion. Round construction and elevated base allow circulation of air around can to disperse heat and reduce moisture build-up and rusting. Durable steel construction with a powder-coat finish provides chemical resistance. Approved by FM, UL, and TÜV. All cans carry a ten-year warranty.

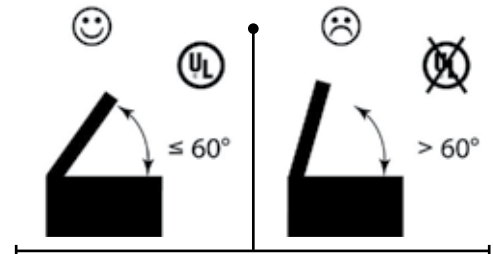
Foot pedal provides hands-free opening. When released, cover self-closes to reduce oxygen source and prevent a fire from starting.



19-038-295



1. Swinging carry handle for portability
2. Warning label with pictographs reduces miscommunication
3. Leakproof design with elevated base provides air circulation to reduce rusting and disperses heat for added safety



Lid opens no more than a 60° angle as required by UL.



Description and Nominal Gallon Capacity	Dimensions OD x H	Approv/Lstg Regulation†	Red Model No		Ship Wt lb/kg
			Foot-Operated	Hand-Operated*	
2 gallon (8 L) oily waste can	9.625 x 9.125 in 244 x 232 mm	FM	—	13-038-295	6/3
6 gallon (20 L) oily waste can	11.875 x 15.875 in 302 x 403 mm	FM,UL,TÜV	17-192A	17-987-11	10/4
10 gallon (34 L) oily waste can	13.938 x 18.25 in 354 x 464 mm		17-192B	19-822-439	13/6
14 gallon (52 L) oily waste can	16.063 x 20.25 in 408 x 514 mm		17-192D	19-822-440	16/7
21 gallon (80 L) oily waste can	18.375 x 23.438 in 467 x 595 mm		17-192E	19-812-503	22/10

*Hand-operated models do not have TÜV certification. †See inside front cover for Approval and Compliance Key.

Biohazard Waste Cans

Safe, temporary collection of biological waste

- Meets OSHA 29 CFR1910.1030 for the segregation of infectious waste.
- Perfect for medical facilities and research laboratories.

Safely store contaminated laundry and other regulated waste (except sharps) in sturdy, leakproof steel cans with automatic, self-closing lid. Easy foot pedal operation opens the container to dispose of biohazard waste, and closes upon pedal release to reduce the risk of contamination. Can comes with one biohazard bag that fits around the circumference of the can top—optional model number 19-033-712 includes a roll of 100 liner bags. Optional label kit number 25880 includes three additional biohazard labels for visibility from all sides to comply to California Health and Safety Code 118280.

To lessen disruptive closure noise in quiet environments, use SoundGard™ models which incorporate a muffling pad inside the lid—reducing noise by approximately 200% over standard models.



Foot pedal offers hands-free opening to reduce the risk of contamination.



19-822-421



19-822-425



19-822-422



Description and Capacity	Dimensions OD x H	Approv/Lstg Regulation†	White Model No	Red Model No	SoundGard™ White Model No	SoundGard™ Silver Model No	Ship Wt lb/kg
6 gallon (20 L) biohazard can	11.875 x 15.875 in 302 x 403 mm	FM, TÜV	19-033-725	19-822-422	19-822-426	19-822-425	10/5
10 gallon (34 L) biohazard can	13.937 x 18.25 in 354 x 464 mm		19-033-755	19-822-421	19-822-424	19-822-423	13/6
100 red liner bags, 11 microns thick	33 x 24 in 838 x 610 mm	—			19-033-712		2/1
Code compliant label kit for California (three labels and instructions)					19-822-469		1/1

†See inside front cover for Approval and Compliance Key.

EcoPolyBlend™ Spill Control Funnels

An eco-friendly, cost-effective way to collect liquids and keep drum tops clean

Use these funnels with any closed-head 30 and 55 gallon (110- and 200-liter) drums. Low-profile, wide diameter opening makes it for quick, easy pouring. Scalloped, sloped design minimizes splashes and prevents containers from resting in their own liquids. Large, flat well at the throat of funnel allows for passive draining of paint tins, filters, buckets and other containers.

Funnel for flammable liquids includes a drum fill vent with brass flame arrester, threaded bung cap with tight seal, and pressure relief valve for high temperatures. Molded-in hook stores optional funnel cover.

Description	Sump Capacity Gallons/Liters	OD x H	Compliance†	Model No	Ship Wt lb/kg
Funnel for non-flammables	2.50/9	21 x 3.25 in 533 x 83 mm	0	19-413-804	5/2
Funnel for flammables		19 x 3.25 in 482 x 83 mm	—	19-822-455	7/3
Cover for funnel 28680				19-413-805	5/2

†See inside front cover for Approval and Compliance Key.



Wide diameter opening allows for quick and easy pouring.



100% recycled content.
Independently green validated
by UL Environment.



Proper bonding and grounding techniques prevent static discharge and the potential for fire.

Safety Drum Funnels

Prevent spills when transferring flammable solvents, thinners, oils or paint wastes

- Wide-mouth opening with hinged, stay-open lid.
- Self-closing lid in case of fire.
- Galvanized steel with durable exterior epoxy powder-coat finish.

Safely transfer flammable liquids into a 30- or 55-gallon (110- or 200-L) drum using these 2.6-gallon (9.8-L) capacity safety funnels that fit into a 2-in (51-mm) bung. Wide 10-3/4-in (273-mm) mouth handles rapid pouring without spills. Durable steel funnels feature a self-closing cover with a fusible link that melts at 165°F (74°C) to automatically close in case of a fire. Model numbers 17-986-56 and 17-187A include a built-in brass flame arrester that absorbs and dissipates heat preventing any external ignition source from reaching the drum's content. Both models handle flammable waste safely—model number 17-187A with a longer flame arrester provides greater liquid flow. For collection of viscous flammables or non-flammable liquids, use model number 19-018560 fitted with a long open-ended brass tube to direct liquid flow. Heavy-duty 18-gauge (1-mm thick) galvanized steel construction with electrostatically applied epoxy powder-coat offers excellent durability and chemical resistance. Lid in closed position reduces vapors and accepts a lock (not included) to prevent unauthorized access.

Safety Drum Funnel with Tip-Over Protection System

Use model number 19-812-446 to prevent spillage from drum tip-over accidents or for earthquake-prone areas. It offers the same protection as drum funnel no. 17-986-56 above, with the addition of an integral ball valve that self-closes to minimize vapor emissions—and seals the drum closed to prevent dangerous content spillage. System includes a brass vent to provide pressure and vacuum relief for protection against rupture or explosion. Easy to operate—install vent with bung adaptor in the 3/4-in (19-mm) bung and brass unit with handle into the 2-in (51-mm) bung. Fill funnel with liquid, close cover and latch, then depress handle to manually open ball valve and release liquid into drum. Releasing the handle automatically closes the valve to safely seal the drum.

FM-approved. EPA and OSHA compliant.

17-986-56

17-187A

19-018560

17-986-56

19-822-453



Need a funnel to fit small steel pails?

For safe liquid collection into 5-gallon (19-liter) pails, visit our website and search model nos. 19-822-448 and 19-039-263.

Use color coding to safely segregate incompatible waste.



19-812-446

Vent

Pushing down handle opens ball valve to release liquid into drum.

19-812-447



Description	Funnel Size Dia x H	Mouth Dia	NPT/NPS	Approv/Lstg Regulation†	Red Funnel Model No	Yellow Funnel Model No	Ship Wt lb/kg
Safety drum funnel with self-closing cover and 6 in (152 mm) flame arrester	10.75 x 10 in 273 x 254 mm	10.75 in 273 mm	2 in (DN50)	FM, TÜV	17-986-56	19-822-453	10/5
Safety drum funnel with self-closing cover and 32 in (813 mm) flame arrester					17-187A	19-822-454	16/7
Safety drum funnel with self-closing cover and 33 in (838 mm) brass tube					19-018560	—	—
Safety drum funnel no. 08207 with tip-over protection system			2 in (DN50) and 0.75 in (DN20) vent	FM	19-812-446	—	20/9
Tip-over protection kit only for use with nos. 08207 or 08205	—	—	FM	19-812-447	—	10/5	

†See inside front cover for Approval and Compliance Key.

EcoPolyBlend™ Accumulation Centers and Ramp

Combine units to create your own customized spill-control system

Low-profile centers only measure 5.5-inches (140-mm) high for easy handling of drums. Made with 100% recycled polyethylene, these accumulation centers are nearly impervious to chemicals, including acids and corrosives. Seamless construction eliminates leaks, making them ideal for drum filling and dispensing operations. Self-locating grates won't ride-up, and are removable for easy cleaning. Combine 2-, 4-, 6-, and 8-drum modular units to create your own customized system. Use the optional joining clips to firmly lock units together. Sumps remain separate and clips can be removed for easy repositioning. Also available in non-recycled yellow color.

EPA compliant, supports SPCC, and meets NFPA 1 2009 edition and IFC fire codes.

Use optional Sump-to-Sump™ drain kit (includes joining clips and transfer tube) for applications requiring a continuous sump. Kit allows you to join centers together, on-site, for full compliance with regulations when sump capacities reach 71-gallons (270-liters). Kit includes one pair stainless steel joining clips, one pair rubber grommets, one polytetrafluoroethylene (PTFE) transfer tube. (Patent No US 6,622,879,B1)

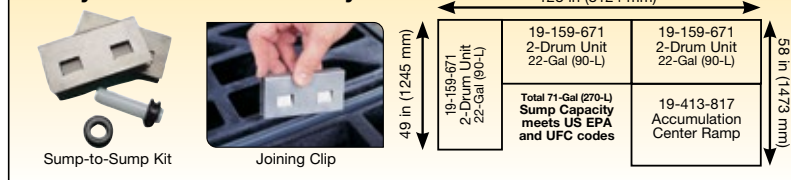
Companion Ramp

Load and unload heavy drum with ease. Anti-skid ribs provide maximum safety. Place the ramp anywhere on accumulation centers size 2-drum or larger.



Modular design lets you join centers together to fit your space and application.

Build your own customized system!



Black models -100% recycled content.
Independently green validated
by UL Environment.

Yellow models have 45% recycled content



19-159-668



19-822-313



3 - 19-159-671 2-Drum Unit
1 - 19-413-817 Ramp
2 - 19-822-446 Sump-to-Sump™ Drain Kits



Description	Sump Capacity Gallons/Liters	Load-bearing* Capacity lb/kg	External Dim. W x D x H	Compliance†	Model No Black	Model No Yellow	Ship Wt lb/kg
1 drum center	12/45	1250/567	25 x 25 x 5.5 in 635 x 635 x 140 mm	—	19-159-669	19-159-668	17/8
2 drum center	24/90	2500/1134	49 x 25 x 5.5 in 1245 x 635 x 140 mm		19-159-671	19-159-670	32/15
4 drum center	49/185	5000/2268	49 x 49 x 5.5 in 1245 x 1245 x 140 mm		19-159-673	19-159-672	61/28
6 drum center	73/276	7500/3402	73 x 49 x 5.5 in 1854 x 1245 x 140 mm	E,S,O	19-822-313	19-822-314	91/41
8 drum center	98/371	10,000/4536	97 x 49 x 5.5 in 2464 x 1245 x 140 mm		19-822-315	19-822-316	122/55
Ramp for above		1000/455	48 x 33 x 6.25 in 1219 x 838 x 159 mm	—	19-413-817	19-159-667	41/19
Joining clips, one pair, stainless steel	—	—	4 x 2 in 102 x 51 mm		19-822-466	—	1/0.5
Sump-to-Sump™ drain kit			—		19-822-446		

EcoPolyBlend™ Replacement Grates (100% recycled)

2 drum grate for all sizes except 1 drum			24 x 48 x 2.5 in 610 x 1219 x 63 mm	—	19-822-460	—	16/7
1 drum grate for 1 drum unit and 3 drum in-line			24 x 24 x 2.5 in 610 x 610 x 63 mm		19-822-458		8/4

*Service temperature range: -30°F to 120°F (-34°C to 49°C) †See inside front cover for Approval and Compliance Key.

EcoPolyBlend™ Spill Control Pallets

Keep workers safe from accidental slips indoors and avoid costly hazmat cleanup costs

- Protect against ground contamination.
- Comply with EPA and avoid potential fines.

Made of molded 100% recycled polyethylene, these pallets resist chemical attack from hazardous acids, caustics and solvents. The oversized sump holds the contents of up to a 55-gallon (200-liter) drum in the event of leak or rupture—meeting or exceeding the most stringent spill containment regulations. Seamless construction eliminates leaks. Self-locating grates lift off for quick cleanup. Black color hides grime and dirt to keep your workplace looking clean. Choose from square or in-line configurations. Also available in non-recycled yellow color.

EPA compliant, supports SPCC, and meets NFPA 1 2009 edition and IFC fire codes.



Use pallet as a workstation for waste collection.



19-159-652



19-159-656



19-159-663



19-159-660



19-159-664 with
19-822-472 ramp

Global Protection
Justrite products are available worldwide.
For pricing and availability, simply contact
the authorized distributor nearest you.



Black models -100% recycled content.
Independently green validated
by UL Environment.

Yellow models have 45% recycled content



Description	Sump Capacity Gallons/Liters	Load-bearing* Capacity lb/kg	External Dim. W x D x H	Compliance†	Model No Black	Model No Yellow	Ship Wt lb/kg
2 drum in-line pallet	66/250	2500/1134	49 x 25 x 18 in	E,S,O	19-159-652	19-159-651	44/20
2 drum in-line pallet w/drain			1245 x 635 x 457 mm		19-159-654	19-159-653	
3 drum in-line pallet	75/284	3750/1701	73 x 25 x 11.625 in		19-159-656	19-159-655	58/26
3 drum in-line pallet w/drain			1854 x 635 x 295 mm		19-822-471	19-159-657	
4 drum in-line pallet	75/284	5000/2268	97 x 25 x 9 in		19-159-660	19-159-659	77/35
4 drum in-line pallet w/drain			2464 x 635 x 229 mm		19-159-662	19-159-661	
4 drum square pallet	73/276	5000/2268	49 x 49 x 10.25 in		19-159-664	19-159-663	70/32
4 drum square pallet w/drain			1245 x 1245 x 260 mm		19-159-666	19-159-665	
Ramp for 28635	—	1000/454	49 x 33 x 10.50 in 1245 x 838 x 267 mm	—	19-822-472	19-159-650	40/18

†See inside front cover for Approval and Compliance Key.

EcoPolyBlend™ Replacement Grates (100% recycled)

2 drum grate for all sizes above	24 x 48 x 2.5 in 610 x 1219 x 63 mm	—	19-822-460	—	16/7
1 drum grate for 3 drum in-line	24 x 24 x 2.5 in 610 x 610 x 63 mm		19-822-459		8/4

*Service temperature range: -30°F to 120°F (-34°C to 49°C)

Outdoor Safety Lockers—Non-Combustible

Safe, secure storage for flammables and hazardous chemicals

- Leakproof, all welded sump with galvanized steel grate flooring.
- 42-in (1.07-m) wide steel door system with 3-point lock.
- Chemical and UV resistant coating, inside and out.

Protect people and the environment and meet insurance requirements by storing hazardous materials in rugged, FM-approved Outdoor Safety Lockers. Non-combustible construction with heavy gauge steel and built-in secondary containment, every locker is fully compliant to meet EPA 40 CFR, NFPA 30 and NFPA 1 regulations. Proper chemical storage reduces poison hazards and accidents, minimizes contamination of chemicals, and prevents unwanted, costly fines.

Each locker features natural draft ventilation, NFPA 704 diamond decal for content identification, anchoring plates for hold down protection, and multiple static grounding connections for maximum safety. Forklift channels permit easy relocation.

Choose explosion relief panels for the storage of highly volatile Class 1A or dispensing of Class 1 A and 1B flammables as defined by NFPA – always check with the local authority having jurisdiction to ensure safety by following all local regulations, including proper setback requirements.



Sixteen-drum locker with optional steel ramp simplifies drum loading.



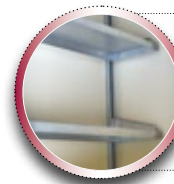
1. Air vents on both sides
2. Inside grounding lug
3. Leakproof sump with removable, galvanized steel grate floor
4. High visibility safety strip
5. Forklift channels
6. 3-point latching system
7. Outside grounding lug and anchor plate
8. Explosion relief design with blow-out panels



19-414-005
2-drum

19-414-011
9-drum

19-414-013
12-drum



See our full selection of accessories for added convenience and safety . . . include a ramp, shelving, grounding kit, fire protection and more—go to justrite.com under Outdoor Storage Lockers in Products area.

NON-COMBUSTIBLE
OUTDOOR SAFETY LOCKERS



15 Year
Structural Warranty

EPA
COMPLIANT



55-Gal Drum Capacity	Sump Capacity Gallons/Liters	Dimensions W x D x H		Approval/Lstg Regulation†	Standard		Explosion Relief	
		Exterior*	Interior		Model No	Ship Wt lb/kg	Model No	Ship Wt lb/kg
2	120/454	67 in x 38 in x 75 in 1702 mm x 965 mm x 1905 mm	54 in x 30 in x 55.5 in 1372 mm x 762 mm x 1410 mm	FM,N,A,E	19-414-005	982/445	19-414-006	1069/485
4	100/379	67 in x 62 in x 75 in 1702 mm x 1575 mm x 1905 mm	54 in x 54 in x 62 in 1372 mm x 1372 mm x 1575 mm		19-414-007	1341/608	19-414-008	1428/648
6	140/530	91 in x 62 in x 97 in 2311 mm x 1575 mm x 2464 mm	78 in x 54 in x 84 in 1981 mm x 1372 mm x 2134 mm		19-414-009	1658/752	19-414-010	1745/792
9	198/750	91 in x 86 in x 97 in 2311 mm x 2184 mm x 2464 mm	78 in x 78 in x 84 in 1981 mm x 1981 mm x 2134 mm		19-414-011	2101/953	19-414-012	2203/999
12	253/958	84 in x 115 in x 97 in 2134 mm x 2921 mm x 2464 mm	78 in x 102 in x 84 in 1981 mm x 2591 mm x 2134 mm		19-414-013	2442/1108	19-414-014	2616/1187
16	326/1234	115 in x 110 in x 97 in 2921 mm x 2794 mm x 2464 mm	102 in x 102 in x 84 in 2591 mm x 2591 mm x 2134 mm		19-414-015	2959/1342	19-414-016	3126/1418

Note: Door height on 2- and 4-drum models is 51-in (1.30-m) high and 80-in (2.03-m) high on 6- through 16-drum models. *Dimensions include mounting plates and door hardware.

†See inside front cover for Approval and Compliance Key.

In most instances, locker sizes 2- through 6-drum are available to ship via a closed container truck, which can potentially reduce freight costs as compared to flat bed shipping alternatives.



Six-drum locker with optional ramp offers a convenient way to load or unload heavy drums using a drum dolly.



Independently tested and approved 90-minute fire-rated door



UL Listed air flow vent



Hydraulic door closer

Outdoor Safety Lockers—2-hour Fire-Rated

Fire-rated construction for safe storage of drums of flammables and combustibles

- 90-minute fire-rated door—third party tested and labeled.
- Gravity air flow vents—UL Listed fire dampers with fusible links.

Manufactured with fire-rated and weatherproof construction, each 2-hour locker has an FM-approved fire-rated wall and roof design and meets EPA 40 CFR, NFPA 30 and NFPA 1 regulations. Multiple layers of fire-resistant gypsum wall board are encased between exterior heavy gauge steel and interior galvanized steel for maximum durability. A leakproof, all welded sump provides compliant secondary containment of hazardous liquids. Galvanized steel grate flooring removes easily for cleaning.

Gravity air flow vents include UL Listed fire dampers and fusible links for maximum safety. Hydraulic door mechanism ensures door will automatically close. Forty-two inch (1.07-m) wide door comes with UL Listed keyed lockset for security. Additional safety features include static grounding connections, anchoring plates, and NFPA 704 diamond decal.

Designed to be placed near existing structures and/or property set-backs, 2-hour fire-rated lockers provide a safe yet convenient storage solution. This improved proximity advantage over non-combustible lockers allows for more efficient use, distribution and storage of your flammables and combustibles. NOTE: Please check with your local authority having jurisdiction for set-back requirements and the correct wall/roof rating needed for your application.

Lockers are also available with FM-approved explosion relief panels that release at 20 psf to reduce the damage associated with a potential explosion.



Customize your locker . . .

For specific applications with optional features and accessories, including loading ramp, shelving, grounding kit, fire protection, lighting, and heating/cooling packages—go to justritefm.com under Outdoor Storage Lockers in Products area.

2 HOUR
FIRE-RATED
OUTDOOR SAFETY LOCKERS



55-Gal. Drum Capacity	Sump Capacity Gallons/Liters	Dimensions W x D x H		Approv/Lstg Regulation†	Standard		Explosion Relief	
		Exterior*	Interior		Model No	Ship Wt lb/kg	Model No	Ship Wt lb/kg
2	88/333	71 in x 42 in x 75 in 1803 mm x 1067 mm x 1905 mm	53.5 in x 29.5 in x 54 in 1359 mm x 749 mm x 1372 mm	FM,N,A,E	18-666-600	1821/826	18-666-601	1775/805
4	80/303	71 in x 66 in x 75 in 1803 mm x 1676 mm x 1905 mm	53.5 in x 53.5 in x 60.5 in 1359 mm x 1359 mm x 1537 mm		18-666-602	2521/1144	18-666-603	2475/1123
6	116/439	95 in x 66 in x 97 in 2413 mm x 1676 mm x 2464 mm	77.5 in x 53.5 in x 82.5 in 1969 mm x 1359 mm x 2096 mm		18-666-604	3505/1590	18-666-605	3459/1569
9	168/636	95 in x 90 in x 97 in 2413 mm x 2286 mm x 2464 mm	77.5 in x 77.5 in x 82.5 in 1969 mm x 1969 mm x 2096 mm		18-666-606	4408/1999	18-666-607	4344/1970
12	221/837	88 in x 119 in x 97 in 2235 mm x 3023 mm x 2464 mm	77.5 in x 101.5 in x 82.5 in 1969 mm x 2578 mm x 2096 mm		18-666-608	5225/2370	18-666-609	5133/2328
16	288/1090	119 in x 114 in x 97 in 3023 mm x 2896 mm x 2464 mm	101.5 in x 101.5 in x 82.5 in 2578 mm x 2578 mm x 2096 mm		18-666-610	6193/2809	18-666-611	6095/2765

Note: Door height on 2- and 4-drum models is 51-in (1.30-m) high and 80-in (2.03-m) high on 6- through 16-drum models. *Dimensions include mounting plates and door hardware. †See inside front cover for Approval and Compliance Key.

In most instances, locker sizes 2- through 6-drum are available to ship via a closed container truck, which can potentially reduce freight costs as compared to flat bed shipping alternatives.

Outdoor Safety Lockers—4-hour Fire-Rated

Higher fire rating—provides proximity advantage over non-combustible and 2-hour locker models

- 3-hour fire-rated door—third party tested and labeled.
- Gravity air flow vents—UL Listed fire dampers with fusible links.
- Leakproof all welded sump.

Manufactured with fire-rated and weatherproof construction, each 4-hour locker has an FM-approved fire-rated wall and roof design and meets EPA 40 CFR, NFPA 30 and NFPA 1 regulations. Multiple layers of fire-resistant gypsum wall board are encased between exterior heavy gauge steel and interior galvanized sheet steel for maximum durability. A leakproof, all welded sump provides compliant secondary containment of hazardous liquids. Galvanized steel grate flooring removes easily for cleaning.

Gravity air flow vents include UL Listed fire dampers and fusible links for maximum safety. Hydraulic door mechanism ensures door will automatically close. Forty-two inch (1.07-m) wide door comes with UL Listed keyed lockset for security. Additional safety features include static grounding connections, anchoring plates, and NFPA 704 diamond decal.

Designed to be placed within close proximity of existing structures and/or property set-backs, 4-hour fire-rated lockers provide a safe yet convenient storage solution. This proximity advantage over non-combustible and 2-hour lockers allows for the most efficient use, distribution and storage of your hazardous chemicals and drums of flammable liquids. NOTE: Please check with your local authority having jurisdiction for setback requirements and the correct wall/roof rating needed for your application.

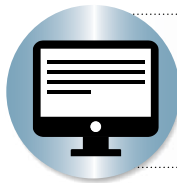
Lockers are also available with FM-approved explosion relief panels that release at 20 psf to reduce the damage associated with a potential explosion.



Designed for close placement to existing structures, 4-hour fire-rated lockers provide a safe and convenient storage solution.



18-666-616
6-drum capacity



Get answers to frequently asked questions . . .

Visit our website to learn more about choosing the proper locker design for your application, chemical storage guidelines, and more.

Global Protection

Justrite products are available worldwide. For pricing and availability, simply contact the authorized distributor nearest you.



4 HOUR
FIRE-RATED
OUTDOOR SAFETY LOCKERS

15 Year
Structural Warranty

EPA
COMPLIANT

FM
APPROVED

55-Gal. Drum Capacity	Sump Capacity Gallons/Liters	Dimensions W x D x H		Approv/Lstg Regulation†	Standard		Explosion Relief	
		Exterior*	Interior		Model No	Ship Wt lb/kg	Model No	Ship Wt lb/kg
2	75/284	71 in x 42 in x 75 in 1803 mm x 1067 mm x 1905 mm	50.5 in x 26.5 in x 52.5 in 1283 mm x 673 mm x 1334 mm	FM,N,A,E	18-666-612	2200/998	18-666-613	2065/937
4	71/269	71 in x 66 in x 75 in 1803 mm x 1676 mm x 1905 mm	50.5 in x 50.5 in x 59 in 1283 mm x 1283 mm x 1499 mm		18-666-614	3036/1377	18-666-615	2901/1316
6	105/397	95 in x 66 in x 97 in 2413 mm x 1676 mm x 2464 mm	74.5 in x 50.5 in x 81 in 1892 mm x 1283 mm x 2057 mm		18-666-616	4330/1964	18-666-617	4195/1903
9	155/587	95 in x 90 in x 97 in 2413 mm x 2286 mm x 2464 mm	74.5 in x 74.5 in x 81 in 1892 mm x 1892 mm x 2057 mm		18-666-618	5467/2480	18-666-619	5270/2390
12	205/776	88 in x 119 in x 97 in 2235 mm x 3023 mm x 2464 mm	74.5 in x 98.5 in x 81 in 1892 mm x 2502 mm x 2057 mm		18-666-620	6468/2934	18-666-621	6198/2811
16	272/1030	119 in x 114 in x 97 in 3023 mm x 2896 mm x 2464 mm	98.5 in x 98.5 in x 81 in 2502 mm x 2502 mm x 2057 mm		18-666-622	7740/3511	18-666-623	7475/3391

Note: Door height on 2- and 4-drum models is 51-in (1.30-m) high and 80-in (2.03-m) high on 6- through 16-drum models. *Dimensions include mounting plates and door hardware. †See inside front cover for Approval and Compliance Key.

In most instances, locker sizes 2- through 6-drum are available to ship via a closed container truck, which can potentially reduce freight costs as compared to flat bed shipping alternatives. justrite.com

Products that Protect People, Property, and the Environment



Classic 45-gal Safety Cabinet (page 3)



Polyethylene Cabinet for Corrosives (page 16)



Type 1 Poly Safety Cans (page 22)



Outdoor Storage Lockers (pages 29–31)

© 2020 Justrite Safety Group · Code no. JR128r4 (1120)

Contact us today:

In the United States

Order online: fishersci.com

Fax an order: 1-800-926-1166

Call customer service: 1-800-766-7000

In Canada

Order online: fishersci.ca

Fax an order: 1-800-463-2996

Call customer service: 1-800-234-7437

 **fisher scientific**
part of Thermo Fisher Scientific

© 2020 Thermo Fisher Scientific Inc. All rights reserved.

Trademarks used are owned as indicated at fishersci.com/trademarks.

BN0617161