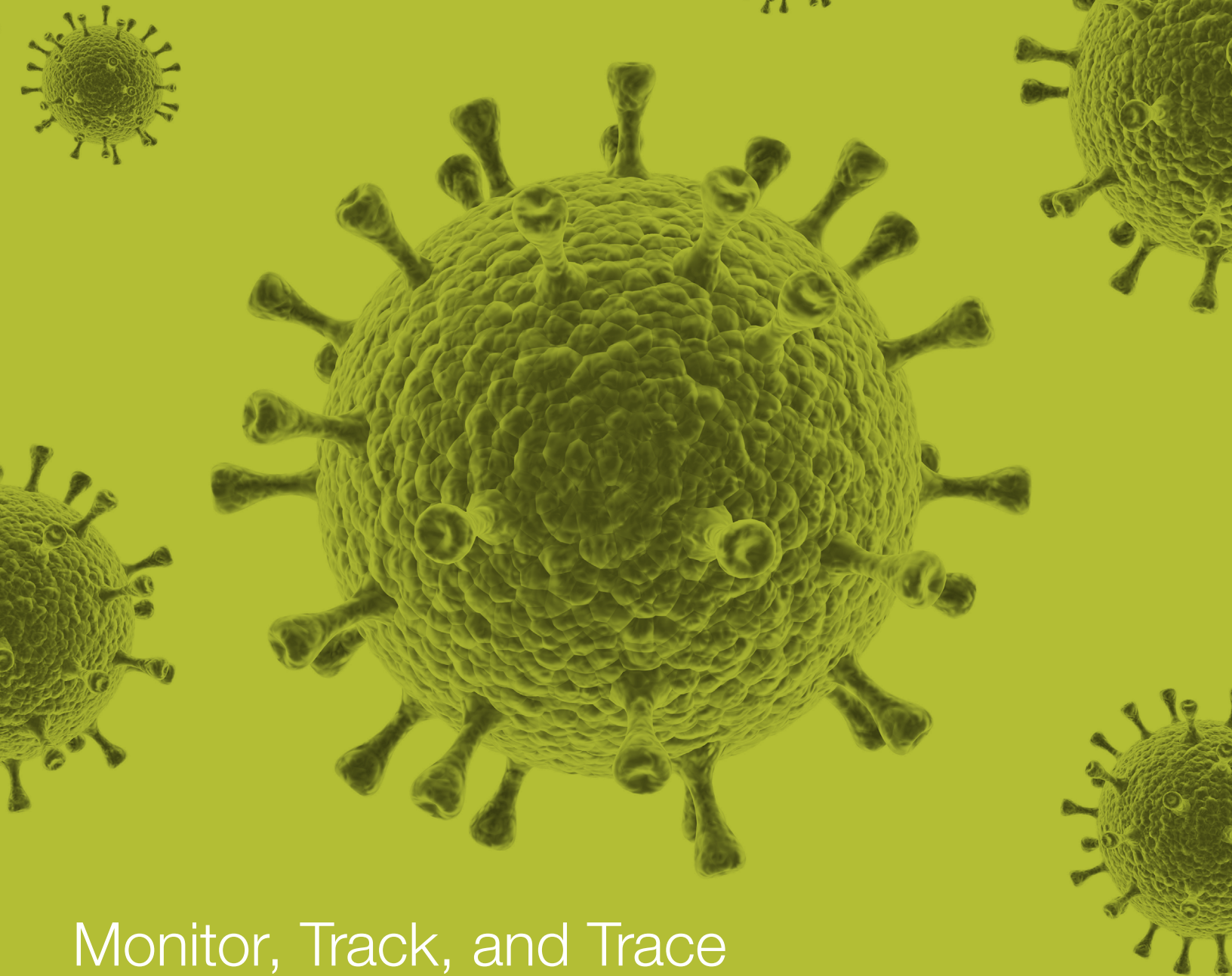


# COVID-19

## Surveillance Solutions



## Monitor, Track, and Trace

The information in this brochure was accurate as of the October 2021 publishing date.



Protect your people and your community with confidence, while maintaining business and operational continuity with surveillance and contact tracing efforts done using air pathogen monitoring, wastewater fecal tracking, or respiratory specimen contact tracing.

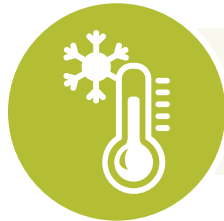
These virus tracking methods follow similar workflow steps within unique sample types, but you can trust the Fisher Scientific channel to provide diverse solutions to help with each step of the process.



Biosafety



Sample Collection



Cold Storage



Sample Preparation  
and Concentration



RNA Extraction and Isolation



RNA Measurement  
and Detection Methods





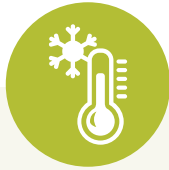
## Sample Collection

Find a wide range of collection options for multiple sample types, including air filtration, manual grab collection, or automated composite collection in wastewater, as well as sterile swabs, tubes, and collection kits for respiratory specimens.



## RNA Extraction and Isolation

Several methods are employed to lyse, purify, and elute the desired active biomaterials for extraction.



## Cold Storage

Proper storage and preparation can help ensure that SARS-CoV-2 RNA measurements are accurate. Refrigerate samples at 4°C immediately after wastewater collection and process them within 24 hours to reduce SARS-CoV-2 RNA degradation and increase surveillance utility.<sup>1</sup>

Store respiratory specimens at 2-8°C for up to 72 hours after collection. If a delay in testing or shipping is expected, store specimens at -70°C or below is recommended by the CDC.



## RNA Measurement and Detection Methods

These methods typically fall in three categories of testing: nucleic acid testing that detects viral RNA, antigen testing that detect viral proteins, and serological testing to detect antibodies. WHO recommends nucleic testing and antigen testing for active COVID-19 diagnosis, whereas serological testing is more useful in epidemiological studies.<sup>3</sup>



## Sample Preparation and Concentration

Homogenizing, clarifying, and concentrating products may differ based on the sample type, but filtering and concentration are necessary steps and can range from: ultrafiltration, electronegative membrane or acidification, polyethylene glycol (PEG) precipitation, centrifugation, ultracentrifugation, or clarifying with filtration methods.



## Biosafety

In accordance with CDC guidance, biosafety recommendations will depend on site-specific risk assessments. They can vary based on diagnostic testing, anatomic pathology, point-of-care testing sites, environmental testing, and specimen packing and shipping needs.

The Fisher Scientific channel offers a diverse range of biosafety products for controlled environments, cabinets and laminar flow solutions, personal protective equipment (PPE), and disinfectants in accordance with EPA and OSHA safety standards.

Visit [fishersci.com/safetyspecialist](https://fishersci.com/safetyspecialist) to contact a Fisher Scientific safety specialist today.

<sup>1</sup>[www.cdc.gov/healthywater/surveillance/wastewater-surveillance/testing-methods.html](https://www.cdc.gov/healthywater/surveillance/wastewater-surveillance/testing-methods.html)

<sup>2</sup>[www.cdc.gov/coronavirus/2019-ncov/lab/guidelines-clinical-specimens.html](https://www.cdc.gov/coronavirus/2019-ncov/lab/guidelines-clinical-specimens.html)

<sup>3</sup>[www.who.int/emergencies/diseases/novel-coronavirus-2019/technical-guidance](https://www.who.int/emergencies/diseases/novel-coronavirus-2019/technical-guidance)





## Air Surveillance

The world's most contagious diseases are spread by in-air transmission. According to WHO, this is defined as "The dissemination of droplet nuclei that remain infectious when suspended in air over long distances and time."

In other words, it's the sneezing, coughing, talking, or breathing from one infected person that releases pathogens into the air to then be inhaled by another person. Examples include influenza, tuberculosis, and coronavirus. Start monitoring today with these sampling and monitoring products.

## Air Sampler and Air Monitoring Solutions



### Thermo Scientific™ AerosolSense™ Sampler

Designed to deliver timely and highly reliable insight into in-air pathogen presence for monitoring and improving facility safety protocol.

Description	Quantity	Cat. No.
AerosolSense Sampler	Each	2900AA



### Sartorius MD8 Airport Portable Air Sampler

This air sampler is suitable for impaction measurements and background monitoring with gelatin membranes.

Description	Quantity	Cat. No.
MD8 Portable Air Sampler	Each	14-555-867



## Sartorius Accessories for the MD8 Airscan™ Air Sampler

Choose from hoses, plates, connectors, and more.

Description	Quantity	Cat. No.
Airscan to Isolator Via Flexible PVC Hose, Adapter	Each	<b>14-555-869</b>
Culture Media Plates for MD8 Airscan Air Sampler, Adapter	Each	<b>14-555-876</b>
PC for MD8 Airscan Air Sampler, Remote Control	Each	<b>14-555-877</b>
MD8 for Airscan Air Samplers, Aluminum Stack	Each	<b>14-555-878</b>
Adapter for Delatin Disposables, Filter Holder	Each	<b>14-555-884</b>
MD8 Airscan Air Sampler, Aluminum Connector	Each	<b>14-555-910</b>
Air Sampler Inlet to Flexible Hose for MD8, Aluminum Connector	Each	<b>14-555-909</b>
MD8 Airscan Air Sampler, Connector	Each	<b>14-555-911</b>
MD8 Airscan Air Sampler, O-Ring	Each	<b>14-555-922</b>



## Sartorius Environmental Air Monitoring Gelatin Membranes

These membranes are sterile and water soluble with a high retention rate. Choose from a wide range of sizes in single-wrapped, disposable filters with holders or packs of filter disks.

Description	Quantity	Cat. No.
Diameter: 25 mm, 5 Filters/Bag, Not Individually Wrapped	50/Pack	<b>14-555-659</b>
Diameter: 37 mm, 5 Filters/Bag, Not Individually Wrapped	50/Pack	<b>14-555-660</b>
Diameter: 47 mm, 5 Filters/Bag, Not Individually Wrapped	50/Pack	<b>14-555-661</b>
Diameter: 80 mm, 5 Filters/Bag, Not Individually Wrapped	50/Pack	<b>14-555-664</b>
Diameter: 80 mm, 3 PE Bags, Individually Wrapped	10/Pack	<b>14-555-667</b>
Diameter: 80 mm, 3 PE Bags (Label on Innermost Bag), Individually Wrapped	10/Pack	<b>14-555-668</b>
Diameter: 80 mm, 1 PE Bag, Individually Wrapped	10/Pack	<b>14-555-881</b>
Diameter: 25 mm, 5 Filters/Bag, Not Individually Wrapped	50/Pack	<b>14-555-663</b>



## Water Surveillance

According to CDC guidelines, multiple testing methods and laboratory workflows are used to quantify SARS-CoV-2 in wastewater across the United States. Laboratory controls can help ensure results are comparable by accounting for method performance and data quality.

Based on the levels of SARS-CoV-2 in wastewater, methods can be adapted to higher or lower detection limits as needed. For example, if levels of SARS-CoV-2 RNA are sufficiently high in wastewater, small volumes of wastewater (e.g., 1 mL) can be tested without additional concentration processes. Testing methods include sample processing steps, use of laboratory controls, and implementation of biosafety measures.

## Wastewater Testing Solutions

### Thermo Scientific™ Narrow-Mouth Closed-Top VOA Bottles

Conduct EPA Volatile Organic Analysis (VOA) analysis using these narrow-mouth glass bottles featuring closed caps, for VOA testing where a pierceable closure is not required.

Description	Quantity	Cat. No.
Narrow-Mouth Closed-Top VOA Bottles, Capacity: 1000 mL, Certified, Closure Size: 33 to 430 mm	12/Case	05-719-489



### Thermo Scientific™ I-Chem™ Wide-Mouth Short-Profile Amber Glass Jars with Closure

Choose these wide-mouth, short-profile amber glass jars with closure for collecting soil, sludge, and waste samples for a variety of organic and inorganic target analytes where light protection is required.

Description	Quantity	Cat. No.
Wide-Mouth Short-Profile Amber Glass Jars with Closure, Capacity: 250 mL, Unprocessed, Closure Size: 70 to 400 mm	24/Case	05-721-104



## Don't see what you're looking for?

Shop our full line of [environmental testing bottles](#).





## DWK Life Sciences WHEATON™ Sub-Surface Grab Sampler™ I System

For convenient gathering of subsurface water samples for pollution testing from spillways, boats, or docks without entering the water.

Description	Quantity	Cat. No.
Sub-Surface Sampling System, Dimensions: 72 in. x 0.75 in. (183 cm x 2 cm), Capacity: 1000 mL	Each	<b>15-437</b>



## Hach™ AS950 Portable Compact Sampler

Typically used in pre-treatment water sampling or for compliance in wastewater, this product is also capable of monitoring SARS-CoV-2 (COVID-19) in sewage.

Description	Quantity	Cat. No.
Portable Compact Sampler Bundle (12 V), Capacity: 575 mL	Each	<b>02-938-0013</b>
Portable Compact Sampler Bundle (12 V), Capacity: 9.46 L	Each	<b>02-938-0012</b>
Portable Compact Sampler Bundle (115 V), Capacity: 575 mL	Each	<b>02-938-0015</b>
Portable Compact Sampler Bundle (115 V), Capacity: 9.46 L	Each	<b>02-938-0014</b>



## Thermo Scientific™ Nalgene™ Settrometer Kit

Analyze the activated sludge process using this all-plastic tool for wastewater treatment plant operators, a cost-effective alternative when compared to glass equivalents.

Description	Quantity	Cat. No.
Outer Diameter: 133 mm, Height: 191 mm, Polycarbonate Construction	Each	<b>15-443-35</b>



## Don't see what you're looking for?

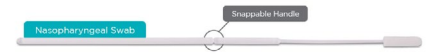
Shop our full line of [sampling tools](#).



## Human Contact Surveillance

### Foamtec Nasopharyngeal Diagnostic Swabs

Polyurethane foam technology provides an exceptional surface area to capture a maximum quantity of target fluids.



Description	Quantity	Cat. No.
Nasopharyngeal Diagnostic Swabs	1,000/Case	19-304-884

### Quidel QuickVue™ Influenza Transport Swabs

Sterile nasal swabs are packaged inside plastic transport tubes.



Description	Quantity	Cat. No.
Influenza Transport Swabs	25/Pack	23-043-049

### Thermo Scientific™ ESwab™

Expand testing capabilities and save money by replacing multiple products with ESwab, a liquid transport swab system compatible with automated specimen processing.

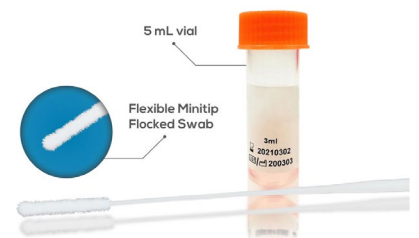
Description	Quantity	Cat. No.
ESwab Minitip Flocked Collection Kit	50/Pack	R723481
ESwab NPG Flocked Collection Kit	50/Pack	R723482
ESwab Regular Flocked Collection Kit	50/Pack	R723480



### LabAid Universal Viral Collection Kit

Designed to collect and transport viruses, chlamydiae, mycoplasmas, and urea plasmas at ambient temperature.

Description	Quantity	Cat. No.
Viral Collection Kit, Volume: 5 mL	1,200/Case	22-363-001
Viral Collection Kit, Volume: 10 mL	1,000/Case	22-363-009





# Sample Collection and Sampling Tools



## Hardy Diagnostics™ Viral Transport Medium

Suitable for the collection and transport of clinical specimens.

Description	Quantity	Cat. No.
Viral Transport Medium, Fill Volume: 3 mL	20/Pack	23-001-726

## BD Veritor™ SARS-CoV-2 Control Swabs

For rapid detection of SARS-CoV-2. Designed for use with the BD Veritor System.



Description	Quantity	Cat. No.
SARS-CoV-2 Control Swabs	10/Pack	B256087



### Don't see what you're looking for?

Shop our full line of [nasal swabs](#) and [collection kits](#).





## Refrigerators

### Thermo Scientific™ TSX Series High-Performance Undercounter Lab Refrigerators

Designed to support sample protection and sustainability objectives for the storage of media, reagents, chemotherapy, pharmaceutical, and other research and medical products.

Description	Quantity	Cat. No.
Undercounter Lab Refrigerator, Single Glass Door	Each	<b>TSX505GA</b>
Undercounter Lab Refrigerator, Single Solid Door	Each	<b>TSX505SA</b>



### Thermo Scientific™ TSX Series High-Performance Lab Refrigerators

Features support sample protection and sustainability objectives for the storage of media, reagents, chemotherapy, pharmaceutical and other storage requiring 2° to 8°C.

Description	Quantity	Cat. No.
Glass Door, Capacity: 23 cu. ft., Plug Type: NEMA 5-15, 115 V, 60 Hz	Each	<b>TSX2305GA</b>
Sliding Glass Door, Capacity: 45.8 cu. ft., Plug Type: NEMA 5-15, 115 V, 60 Hz	Each	<b>TSX4505GA</b>
Sliding Glass Door, Capacity: 45.8 cu. ft., Plug Type: NEMA 6-15, 208-230 V, 60 Hz	Each	<b>TSX4505GD</b>
Double Glass Door, Capacity: 51.1 cu. ft., Plug Type: NEMA 5-15, 115 V, 60 Hz	Each	<b>TSX5005GA</b>
Double Glass Door, Capacity: 51.1 cu. ft., Plug Type: NEMA 6-15, 208-230 V, 60 Hz	Each	<b>TSX5005GD</b>
Double Solid Door, Capacity: 51.1 cu. ft., Plug Type: NEMA 5-15, 115 V, 60 Hz	Each	<b>TSX5005SA</b>
Double Solid Door, Capacity: 51.1 cu. ft., Plug Type: NEMA 6-15, 208-230 V, 60 Hz	Each	<b>TSX5005SD</b>
Glass Door, Capacity: 11.5 cu. ft., Plug Type: NEMA 5-15, 115 V, 60 Hz	Each	<b>TSX1205GA</b>
Glass Door, Capacity: 11.5 cu. ft., Plug Type: NEMA 6-15, 208-230 V, 60 Hz	Each	<b>TSX1205GD</b>
Glass Door, Capacity: 11.5 cu. ft., Plug Type: CEE 7/7, 115 V, 60 Hz	Each	<b>TSX1205GV</b>
Solid Door, Capacity: 11.5 cu. ft., Plug Type: NEMA 5-15, 115 V, 60 Hz	Each	<b>TSX1205SA</b>
Solid Door, Capacity: 11.5 cu. ft., Plug Type: NEMA 6-15, 208-230 V, 60 Hz	Each	<b>TSX1205SD</b>
Solid Door, Capacity: 11.5 cu. ft., Plug Type: CEE7/7, 208-230 V, 60 Hz	Each	<b>TSX1205SV</b>
Glass Door, Capacity: 29.2 cu. ft., Plug Type: NEMA 5-15, 115 V, 60 Hz	Each	<b>TSX3005GA</b>
Glass Door, Capacity: 29.2 cu. ft., Plug Type: NEMA 6-15, 208-230 V, 60 Hz	Each	<b>TSX3005GD</b>
Glass Door, Capacity: 29.2 cu. ft., Plug Type: CEE7/7, 115 V, 60 Hz	Each	<b>TSX3005GV</b>
Solid Door, Capacity: 29.2 cu. ft., Plug Type: NEMA 5-15, 115 V, 60 Hz	Each	<b>TSX3005SA</b>
Solid Door, Capacity: 29.2 cu. ft., Plug Type: NEMA 6-15, 208-230 V, 60 Hz	Each	<b>TSX3005SD</b>
Solid Door, Capacity: 29.2 cu. ft., Plug Type: CEE7/7, 208-230 V, 60 Hz	Each	<b>TSX3005SV</b>
Glass Door, Capacity: 23 cu. ft., Plug Type: NEMA 6-15, 208-230 V, 60 Hz	Each	<b>TSX2305GD</b>
Glass Door, Capacity: 23 cu. ft., Plug Type: CEE7/7, 208-230 V, 60 Hz	Each	<b>TSX2305GV</b>
Solid Door, Capacity: 23 cu. ft., Plug Type: NEMA 5-15, 115 V, 60 Hz	Each	<b>TSX2305SA</b>
Solid Door, Capacity: 23 cu. ft., Plug Type: NEMA 6-15, 208-230 V, 60 Hz	Each	<b>TSX2305SD</b>
Solid Door, Capacity: 23 cu. ft., Plug Type: CEE7/7, 208-230 V, 60 Hz	Each	<b>TSX2305SV</b>





## Thermo Scientific™ TSX Series High-Performance Chromatography Refrigerators

Designed for a variety of applications requiring precise temperature control, full access to chromatography instrumentation, and easy setup.

Description	Quantity	Cat. No.
Single Glass Door, Capacity: 23 cu. ft., Plug Type: NEMA 5-15, 115 V, 60 Hz	Each	<b>TSX2305CA</b>
Single Glass Door, Capacity: 23 cu. ft., Plug Type: NEMA 6-15, 208-230 V, 50/60 Hz	Each	<b>TSX2305CD</b>
Single Glass Door, Capacity: 23 cu. ft., Plug Type: CEE 7.7, 208-230 V, 50/60 Hz	Each	<b>TSX2305CV</b>
Sliding Glass Door, Capacity: 45 cu. ft., Plug Type: NEMA 5-15, 115 V, 60 Hz	Each	<b>TSX4505CA</b>
Sliding Glass Door, Capacity: 45 cu. ft., Plug Type: NEMA 6-15, 208-230 V, 60 Hz	Each	<b>TSX4505CD</b>
Sliding Glass Door, Capacity: 45 cu. ft., Plug Type: CEE 7/7, 208-230 V, 50 Hz	Each	<b>TSX4505CV</b>
Double Glass Door, Capacity: 50 cu. ft., Plug Type: NEMA 5-15, 115 V, 60 Hz	Each	<b>TSX5005CA</b>
Double Glass Door, Capacity: 50 cu. ft., Plug Type: NEMA 6-15, 208-230 V, 60 Hz	Each	<b>TSX5005CD</b>
Double Glass Door, Capacity: 50 cu. ft., Plug Type: CEE7/7, 208-230 V, 50 Hz	Each	<b>TSX5005CV</b>
Glass Door, Capacity: 30 cu. ft., Plug Type: NEMA 6-15, 208-230 V, 60 Hz	Each	<b>TSX3005CD</b>
Glass Door, Capacity: 30 cu. ft., Plug Type: NEMA 5-15, 115 V, 60 Hz	Each	<b>TSX3005CA</b>
Glass Door, Capacity: 30 cu. ft., Plug Type: CEE 7/7.5, 208-230 V, 50 Hz	Each	<b>TSX3005CV</b>



## Thermo Scientific™ TSG Series General Purpose Laboratory Refrigerators

Suited for the demanding requirements of daily use in research, clinical, and industrial laboratories storing non-critical products.

Description	Quantity	Cat. No.
Capacity: 12 cu. ft., Glass Door, White Cabinet, Painted White Steel Interior	Each	<b>TSG12RPGA</b>
Capacity: 25 cu. ft., Glass Door, White Cabinet, Painted White Steel Interior	Each	<b>TSG25RPGA</b>
Capacity: 25 cu. ft., Solid Stainless Steel Door, White Cabinet, Painted White Steel Interior	Each	<b>TSG25RPSA</b>
Capacity: 25 cu. ft., Glass Door, Gray Cabinet, Stainless Steel Interior	Each	<b>TSG25RSGA</b>
Capacity: 25 cu. ft., Solid Stainless Steel Door, Gray Cabinet, Stainless Steel Interior	Each	<b>TSG25RSSA</b>
Capacity: 30 cu. ft., Glass Door, White Cabinet, Painted White Steel Interior	Each	<b>TSG30RPGA</b>
Capacity: 30 cu. ft., Solid Stainless Steel Door, White Cabinet, Painted White Steel Interior	Each	<b>TSG30RPSA</b>
Capacity: 30 cu. ft., Glass Door, Gray Cabinet, Stainless Steel Interior	Each	<b>TSG30RSGA</b>
Capacity: 30 cu. ft., Solid Stainless Steel Door, Gray Cabinet, Stainless Steel Interior	Each	<b>TSG30RSSA</b>
Capacity: 45 cu. ft., Sliding Glass Door, White Exterior, Painted White Steel Interior	Each	<b>TSG45RPLA</b>
Capacity: 45 cu. ft., Sliding Glass Door, Gray Exterior, Stainless Steel Interior	Each	<b>TSG45RSLA</b>
Capacity: 49 cu. ft., Glass Door, White Exterior, Painted White Steel Interior	Each	<b>TSG49RPGA</b>
Capacity: 49 cu. ft., Solid Stainless Steel Door, White Exterior, Painted White Steel Interior	Each	<b>TSG49RPSA</b>
Capacity: 49 cu. ft., Glass Door, Gray Exterior, Stainless Steel Interior	Each	<b>TSG49RSGA</b>
Capacity: 49 cu. ft., Solid Stainless Steel Door, Gray Exterior, Stainless Steel Interior	Each	<b>TSG49RSSA</b>
Capacity: 72 cu. ft., Glass Door, White Exterior, Painted White Steel Interior	Each	<b>TSG72RPGA</b>
Capacity: 72 cu. ft., Glass Door, Gray Exterior, Stainless Steel Interior	Each	<b>TSG72RSGA</b>





## Temperature Controls and Dataloggers

### Fisherbrand™ Nonmercury Verification Thermometers

To verify sample temperatures in freezers, refrigerators, and incubators with traceability to NIST.

Description	Quantity	Cat. No.
Verification Thermometer: Refrigerator, Accuracy: $\pm 0.75^{\circ}\text{C}$ , Temperature Range: $-5^{\circ}\text{C}$ to $15^{\circ}\text{C}$ , Length: 125 mm	Each	13-202-631
Verification Thermometer: Freezer, Accuracy: $\pm 0.5^{\circ}\text{C}$ , Temperature Range: $-30^{\circ}\text{C}$ to $1^{\circ}\text{C}$ , Length: 135 mm	Each	13-202-632
Verification Thermometer: Incubator, Accuracy: $\pm 0.75^{\circ}\text{C}$ , Temperature Range: $15^{\circ}\text{C}$ to $50^{\circ}\text{C}$ , Length: 135 mm	Each	13-202-630
Verification Thermometer: Oven, Accuracy: $\pm 1.5^{\circ}\text{C}$ and $\pm 2^{\circ}\text{C}$ above $100^{\circ}\text{C}$ , Temperature Range: $20^{\circ}\text{C}$ to $130^{\circ}\text{C}$ , Length: 145 mm	Each	13-202-635



### Fisherbrand™ TraceableLIVE™ Ultra-Low Temperature WiFi Datalogging Thermometers with Remote Notification

A simple, efficient, and reliable way to stay connected to your critical environments with smartphone, tablet, or personal computer.

Description	Quantity	Cat. No.
2 Stainless Steel 316 Probes, Quick Start Guide, Batteries, Magnets, Velcro, Wall Mount, and Traceable™ Certificate	Each	15-079-627
1 Stainless Steel 316 Probe, Quick Start Guide, Batteries, Magnets, Velcro, Wall Mount, and Traceable™ Certificate	Each	15-079-626



### Fisherbrand™ Traceable™ Memory-Loc™ Ultra-Low Temperature USB Datalogging Refrigerator/Freezer Thermometers

High-accuracy thermometer that's suitable for monitoring temperatures in refrigerators, freezers, water baths, heating blocks, and incubators.

Description	Quantity	Cat. No.
1 Probe	Each	15-079-622
2 Probes	Each	15-079-623







## Thermo Scientific™ Smart-Vue Pro Modules

Help increase efficiency with multi-sensor wireless monitoring.

Description	Quantity	Cat. No.
Smart-Vue Pro Duo	Each	<b>SVHWRMOD002</b>
Smart-Vue Pro Quatro	Each	<b>SVHWRMOD004</b>

## Thermo Scientific™ InSight Kits

Wirelessly monitor your cold storage equipment's temperature, energy consumption, and other parameters.



Description	Quantity	Cat. No.
InSight Kit for ULT and Freezers	Each	<b>11-676-377</b>
InSight Kit for Cryogenic Storage (LN2)	Each	<b>11-676-380</b>
InSight Kit for Walk-In Freezer (Single Refrigeration System)	Each	<b>11-676-378</b>
InSight Kit for Walk-In Freezer (Dual Refrigeration System)	Each	<b>11-676-379</b>



## Don't see what you're looking for?

Shop our full line of [cold storage solutions](#).



# Sample Preparation

## Filtration and Clarification

- Filters
- Funnels
- Filtering Flasks
- Thimble

## Centrifugation

- Micro, Compact, Benchtop, and Specialty Centrifuges

## Ultrafiltration and Protein Concentration

- Ultrafiltration
- Protein Concentrators
- Tangential Flow Filtration

## Liquid Handling

- Pipettes
- Tips

## Temperature Regulation

- Thermal Cyclers

## Consumables

- Well Plates
- PCR Tubes
- PCR Regents and Kits



# RNA Extraction, Isolation, and Detection

## RNA Extraction, Isolation, and Detection

### Applied Biosystems™ MagMAX™ Viral/Pathogen Ultra Nucleic Acid Isolation Kit

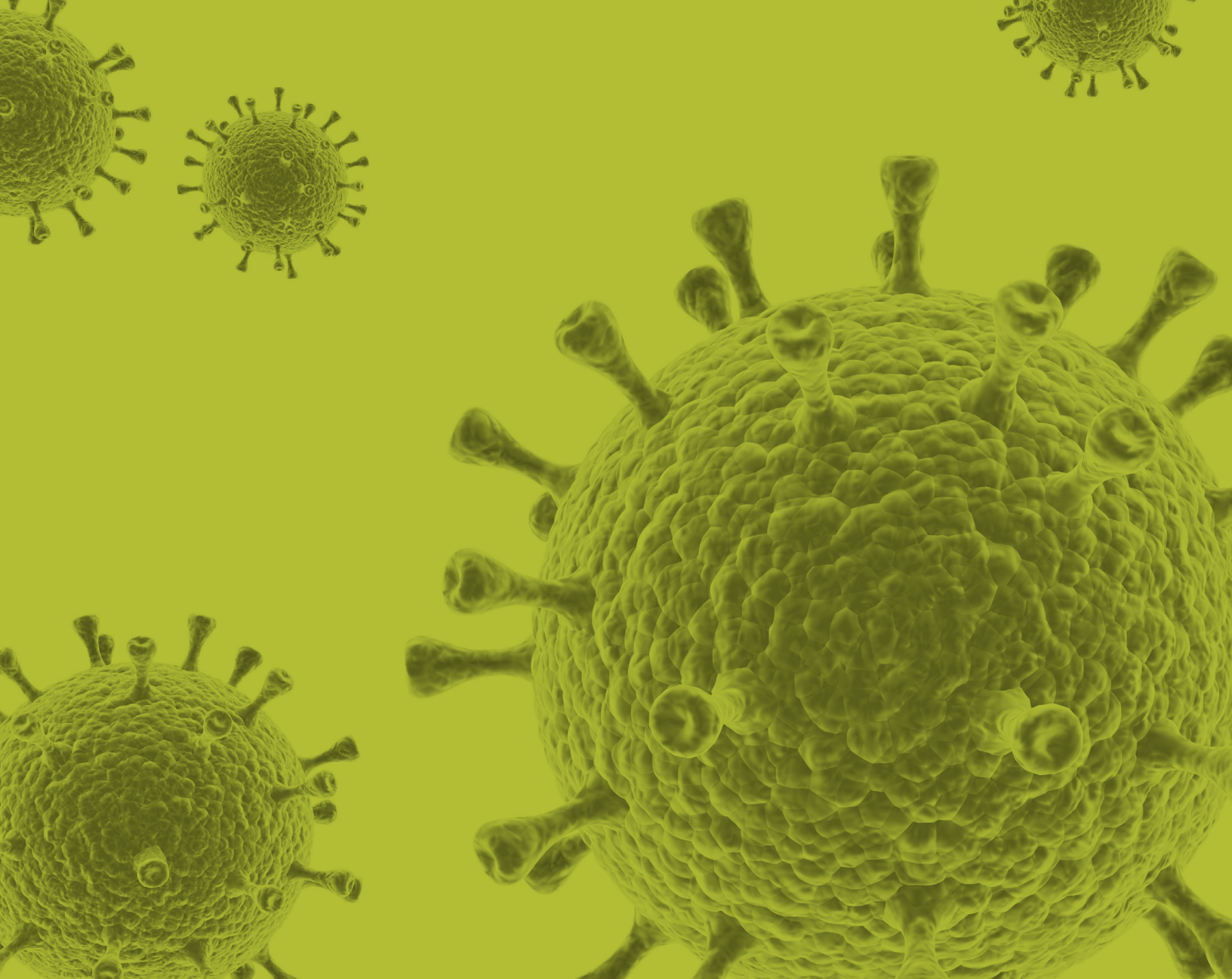
Recover nucleic acid from viral particles and gram-negative bacteria and enable lysis and nucleic acid recovery from tough pathogens.

Description	Quantity	Cat. No.
Viral/Pathogen Ultra Nucleic Acid Isolation Kit	Each	A42356



## Don't see what you're looking for?

Shop our full line of [Molecular Biology Reagents and Kits](#).



Visit [fishersci.com/research-essentials](https://fishersci.com/research-essentials) or [fishersci.com/vaccinesolutions](https://fishersci.com/vaccinesolutions) to browse a wide selection of industry-leading COVID-19 testing products. Choose from molecular methods, antigen detection, or serological tests, which are CLIA-waived, moderate, or high-complexity assays.

Contact your [Fisher Scientific sales representative](#) to learn more.

Distributed by Fisher Scientific. Contact us today:

**In the United States**

Order online: [fishersci.com](https://fishersci.com)

Call customer service: 1-800-766-7000

© 2021 Thermo Fisher Scientific Inc. All rights reserved.

Trademarks used are owned as indicated at [fishersci.com/trademarks](https://fishersci.com/trademarks).

21-587-2374 LW 10/21 BN20210994

