



ALLERGY & AUTOIMMUNITY

 **ImmunoCAP**[®]
Is it allergy?

EliA[™]
Excellence in Autoimmunity

Phadia[®]
LABORATORY SYSTEMS

Product Catalog 2015

Thermo
SCIENTIFIC

	Page
Introduction	5
Available Assays	6
Overview of Instruments and Assays	7
Allergy and Asthma Assays	
ImmunoCAP® Total IgE	8
ImmunoCAP® Total IgE low range**	9
ImmunoCAP® Specific IgE	10
ImmunoCAP® Phadiatop - Qualitative screen	11
ImmunoCAP® Specific IgG	12
ImmunoCAP® Specific IgG4***	13
ImmunoCAP® Specific IgA***	14
ImmunoCAP® Eosinophil Cationic Protein (ECP)***	15
ImmunoCAP® Tryptase	16
ImmunoCAP® Allergen Components	17
ImmunoCAP Allergen Component Package	19
ImmunoCAP® Allergens	21
ImmunoCAP® Antigens	35
ImmunoCAP® Immuno Solid-phase Allergen Chip (ISAC)**	37
Autoimmunity Assays	
EliA™	40
Varelisa®	43
ImmunoCAP® Thyroglobulin IgG / Thyroid Peroxidase IgG	45
ImmunoCAP® Gliadin IgA/IgG	46
Serum Biomarkers (Miscellaneous Assays Available Through PiRL)	47
Procalcitonin PCT**	
MR-proDM**	
Copeptin**	
Phadia® Laboratory Systems	
Phadia® 5000	48
System reagents, Accessories and Software	
Phadia® 2500	49
System reagents, Accessories and Software	
Phadia® 1000	50
System reagents, Accessories and Software	
Phadia® 250	51
System reagents, Accessories and Software	
Phadia® 100	52
System reagents, Accessories and Software	
Quality Club™	53
Specifications	54
ImmunoCAP®, EliA™ and Varelisa®	

**Available through Phadia Immunology Reference Laboratory and outside the US. Contact Customer Service, 800-346-4364, for turnaround times.

*** Investigational Use Only (IUO). These products have not been cleared or approved for any clinical diagnostic use.

About ImmunoDiagnostics

Phadia, the global leader in allergy and autoimmunity diagnostics, is now the ImmunoDiagnostics business of Thermo Fisher Scientific.

As the ImmunoDiagnostics experts within Thermo Fisher Scientific, we work to dramatically improve the management of allergy, asthma and autoimmune diseases. We do this by providing healthcare professionals with superior diagnostic technologies. This results in better healthcare and quality of life for millions of patients and their families. For more information, please visit www.thermoscientific.com/phadia.

Thermo Fisher Scientific Inc. is the world leader in serving science. Our mission is to enable our customers to make the world healthier, cleaner and safer. With revenues of \$17 billion, we have approximately 50,000 employees and serve customers within pharmaceutical and biotech companies, hospitals and clinical diagnostic labs, universities, research institutions and government agencies, as well as in environmental and process control industries. We create value for our key stakeholders through four premier brands, Life Technologies™, Thermo Scientific, Fisher Scientific and Unity™ Lab Services, which offer a unique combination of innovative technologies, convenient purchasing options and a single solution for laboratory operations management. Our products and services help our customers solve complex analytical challenges, improve patient diagnostics and increase laboratory productivity.



Immunoglobulin E

Phadiatop®	Allergy, atopy
Total IgE	Allergy
Specific IgE	Allergy, whole extract, allergen components

Immunoglobulin A

Specific IgA***	Allergy
Gliadin IgA	Celiac Disease

Immunoglobulin G

Specific IgG***	Allergy, celiac disease, immunotherapy, lung disease, autoimmunity
Specific IgG4***	Allergy, immunotherapy
Gliadin IgG	Celiac Disease
Thyroid Peroxidase IgG	Thyroid autoimmunity
Thyroglobulin IgG	Thyroid autoimmunity

Cellular Markers (Asthma and Inflammation)

ECP***	Asthma, guiding corticosteroid treatment
Tryptase	Systemic mastocytosis, mast cell activation

Autoimmunity

ELIA™

anti-CCP, RF	Rheumatoid Arthritis
ANA / ENA, anti-dsDNA, ssDNA	Rheumatology
ANCA, anti-GBM	Vasculitis
anti-Cardiolipin, anti-β2GPI	Antiphospholipid syndrome
anti-tTG, anti-Gliadin, anti-Gliadin peptides	Celiac Disease
Calprotectin, ASCA***	Inflammatory bowel diseases
anti-TG anti-TPO***	Autoimmune thyroid diseases
AMA (anti-M2)*	Primary liver cirrhosis
anti-IgA***	Immunodeficiency

Varelisa®

ANA / ENA	Rheumatology
anti-ACA / anti-β2GPI	Antiphospholipid Syndrome
anti-ANCA, anti-GBM	Vasculitis
anti-tTG, anti-Gliadin	Celiac disease
anti-TG / anti-TPO	Thyroid diseases
anti-LKM1, anti-M2, etc.***	Liver diseases etc.

ImmunoCAP® ISAC

Specific IgE**	Allergy, Molecular Allergy
Specific IgG4**	Allergy, immunotherapy

*Pending FDA clearance

**Available through Phadia Immunology Reference Laboratory and outside the US. Contact Customer Service, 800-346-4364, for turnaround times.

***Available outside the US.

Overview of instruments and assays

	Phadia® 100	Phadia® 250	Phadia® 1000	Phadia® 2500	Phadia® 5000
Allergy and Asthma assays					
ImmunoCAP Total IgE					
ImmunoCAP Specific IgE					
ImmunoCAP Phadiatop					
ImmunoCAP Specific IgG/IgG4***					
ImmunoCAP ECP***					
ImmunoCAP Tryptase				-	-
ImmunoCAP Specific IgA***	-	-	-	-	-
EliA Autoimmunity assays					
ANA/ENA, anti-dsDNA, anti-ssDNA			-	*	
ANCA / anti-GBM			-	*	
anti-CCP, RF			-	*	
anti-tTG, anti-Gliadin, anti-Gliadin peptides			-	*	
Calprotectin, ASCA**			-	*	
anti-Cardiolipin, anti-β2GPI			-	*	
anti-TPO, anti-TG**			-	*	
ImmunoCAP Thyroglobulin IgG			-	*	
ImmunoCAP Thyroid Peroxidase IgG			-	*	
ImmunoCAP Gliadin IgA/IgG	-	-	-	-	-



*Pending FDA clearance.

**Available through Phadia Immunology Reference Laboratory and outside the US. Contact Customer Service, 800-346-4364, for turnaround times.

*** Investigational Use Only (IUO). These products have not been cleared or approved for any clinical diagnostic use.

Total IgE Total IgE Low Range**

The test for Total IgE measures IgE in human serum or plasma in concentrations between 2 to 5000 ku/L. The test for Low Range Total IgE measures IgE in human serum or plasma in concentrations between 0.1 to 100 ku/L. stimulation.



Reagents Phadia® 5000 / Phadia® 2500

Product	Size	Art. No.
Total IgE Conjugate 400	6 x 400	10-9480-02
Total IgE Calibrator Strip	5 x 1 curve	10-9387-01
Total IgE Curve Control Strip	5 x 3 pairs	10-9325-01
Total IgE Anti-IgE ImmunoCAP	16	14-4509-01
IgE/ECP/Tryptase Sample Diluent	50 ml	10-9360-01
System reagents, see page 48-49		
Control		
ImmunoCAP Total IgE Control LMH	3 x 2 x 4	10-9447-01

Reagents Phadia® 1000 / Phadia® 250

Product	Size	Art. No.
Total IgE Conjugate 100	6 x 100	10-9319-02
Total IgE Conjugate 400	6 x 400	10-9480-02
Total IgE Calibrator Strip	5 x 1 curve	10-9387-01
Total IgE Curve Control Strip	5 x 3 pairs	10-9325-01
Total IgE Anti-IgE ImmunoCAP	16	14-4509-01
IgE/ECP/Tryptase Sample Diluent	50 ml	10-9360-01
System reagents, see page 50-51		
Control		
ImmunoCAP Total IgE Control LMH	3 x 2 x 4	10-9447-01

Reagents Phadia® 100

Product	Size	Art. No.
Total IgE (Conjugate, Curve Control)	96, 4CC	10-9517-02
Total IgE Calibrators	1 curve	10-9252-01
Total IgE Curve Controls	3 pairs	10-9257-01
Total IgE Anti-IgE ImmunoCAP	16	14-4509-01
IgE/ECP/Tryptase Sample Diluent	6 x 3.0 ml	10-9256-01
System reagents, see page 52		
Control		
ImmunoCAP Total IgE Control LMH	3 x 2 x 4	10-9447-01

**Available through Phadia Immunology Reference Laboratory and outside the US. Contact Customer Service, 800-346-4364, for turnaround times.

Reagents Phadia® 5000 / Phadia® 2500

Product	Size	Art. No.
Total IgE Low Range ImmunoCAP**	3 x 16	14-4497-35
Specific IgE Conjugate 100	6 x 100	10-9316-02
Specific IgE Conjugate 400	6 x 400	10-9310-02
Specific IgE Calibrator Strip	5 x 1 curve	10-9459-01
Specific IgE Curve Control Strip	5 x 3 pairs	10-9312-01
IgE/ECP/Tryptase Sample Diluent	50 ml	10-9360-01
Specific IgE Anti-IgE ImmunoCAP	16	14-4417-01
System reagents, see page 48-49		

Reagents Phadia® 1000 / Phadia® 250

Product	Size	Art. No.
Total IgE Low Range ImmunoCAP**	3 x 16	14-4497-35
Specific IgE Conjugate 100	6 x 100	10-9316-02
Specific IgE Conjugate 400	6 x 400	10-9310-02
Specific IgE Calibrator Strip	5 x 1 curve	10-9459-01
Specific IgE Curve Control Strip	5 x 3 pairs	10-9312-01
IgE/ECP/Tryptase Sample Diluent	50 ml	10-9360-01
Specific IgE Anti-IgE ImmunoCAP	16	14-4417-01
System reagents, see page 50-51		

Reagents Phadia® 100

Product	Size	Art. No.
Total IgE Low Range ImmunoCAP**	3 x 16	14-4497-35
Specific IgE (Conjugate, Curve Controls)	96, 2 pairs CC	10-9462-02
Specific IgE Conjugate	6 x 96	10-9463-02
Specific IgE Calibrators	1 curve	10-9460-01
Specific IgE Curve Controls	3 pairs	10-9408-01
IgE/ECP/Tryptase Sample Diluent	6 x 3.0 ml	10-9256-01
Specific IgE Anti-IgE ImmunoCAP	16	14-4417-01
System reagents, see page 52		

**Available through Phadia Immunology Reference Laboratory and outside the US. Contact Customer Service, 800-346-4364, for turnaround times.

Specific IgE

ImmunoCAP Specific IgE provides quantitative measurements of IgE antibodies in human serum or plasma.

Specific IgE antibodies appear as a result of exposure to allergens and define sensitization to an allergen. The presence of specific IgE antibodies is useful to identify the allergens that elicit symptoms and signs of allergy in patients with respiratory allergic diseases including asthma, food allergy, and anaphylactic sensitivity. More than 600 different allergens are available for testing.

**Reagents Phadia® 5000 / Phadia® 2500**

Product	Size	Art. No.
Specific IgE Conjugate 400	6 x 400	10-9310-02
Specific IgE Calibrator Strip	5 x 1 curve	10-9459-01
Specific IgE Curve Control Strip	5 x 3 pairs	10-9312-01
IgE/ECP/Tryptase Sample Diluent	50 ml	10-9360-01
Specific IgE Anti-IgE ImmunoCAP System reagents, see page 45-46	16	14-4417-01
Controls		
ImmunoCAP Specific IgE Negative Control	6 x 4	10-9445-01
ImmunoCAP Specific IgE Control L	6 x 4	10-9528-02
ImmunoCAP Specific IgE Control M	6 x 4	10-9529-02
ImmunoCAP Specific IgE Control H	6 x 4	10-9530-02
Allergens		
ImmunoCAP Allergens, see pages 17-34		

Reagents Phadia® 1000 / Phadia® 250

Product	Size	Art. No.
Specific IgE Conjugate 100	6 x 100	10-9316-02
Specific IgE Conjugate 400	6 x 400	10-9310-02
Specific IgE Calibrator Strip	5 x 1 curve	10-9459-01
Specific IgE Curve Control Strip	5 x 3 pairs	10-9312-01
IgE/ECP/Tryptase Sample Diluent	50 ml	10-9360-01
Specific IgE Anti-IgE ImmunoCAP System reagents, see page 47-48	16	14-4417-01
Controls		
ImmunoCAP Specific IgE Negative Control	6 x 4	10-9445-01
ImmunoCAP Specific IgE Control L	6 x 4	10-9528-02
ImmunoCAP Specific IgE Control M	6 x 4	10-9529-02
ImmunoCAP Specific IgE Control H	6 x 4	10-9530-02
Allergens		
ImmunoCAP Allergens, see pages 17-34		

Reagents Phadia® 100

Product	Size	Art. No.
Specific IgE (Conjugate, Curve Controls)	96, 2 pairs CC	10-9462-02
Specific IgE Conjugate	6 x 96	10-9463-02
Specific IgE Calibrators	1 curve	10-9460-01
Specific IgE Curve Controls	3 pairs	10-9408-01
IgE/ECP/Tryptase Sample Diluent	6 x 3.0 ml	10-9256-01
Specific IgE Anti-IgE ImmunoCAP System reagents, see page 49	16	14-4417-01
Controls		
ImmunoCAP Specific IgE Negative Control	6 x 4	10-9445-01
ImmunoCAP Specific IgE Control L	6 x 4	10-9528-02
ImmunoCAP Specific IgE Control M	6 x 4	10-9529-02
ImmunoCAP Specific IgE Control H	6 x 4	10-9530-02
Allergens		
ImmunoCAP Allergens, see pages 17-34		

Phadiatop®

Phadiatop is an initial, qualitative screening test useful for identifying patients with a high likelihood of an allergic disease (so called atopic individuals). The test utilizes a mixture of allergens often implicated in causing allergic diseases in adults and children, respectively.

**Reagents Phadia® 5000 / Phadia® 2500**

Product	Size	Art. No.
Phadiatop ImmunoCAP	3 x 16	14-4338-35
Specific IgE Conjugate 400	6 x 400	10-9310-02
Specific IgE Calibrator Strip	5 x 1 curve	10-9459-01
Specific IgE Curve Control Strip	5 x 3 pairs	10-9312-01
IgE/ECP/Tryptase Sample Diluent	50 ml	10-9360-01
Specific IgE Anti-IgE ImmunoCAP	16	14-4417-01
System reagents, see page 48-49		

Reagents Phadia® 1000 / Phadia® 250

Product	Size	Art. No.
Phadiatop ImmunoCAP	3 x 16	14-4338-35
Specific IgE Conjugate 100	6 x 100	10-9316-02
Specific IgE Conjugate 400	6 x 400	10-9310-02
Specific IgE Calibrator Strip	5 x 1 curve	10-9459-01
Specific IgE Curve Control Strip	5 x 3 pairs	10-9312-01
IgE/ECP/Tryptase Sample Diluent	50 ml	10-9360-01
Specific IgE Anti-IgE ImmunoCAP	16	14-4417-01
System reagents, see page 50-51		

Reagents Phadia® 100

Product	Size	Art. No.
Phadiatop ImmunoCAP	3 x 16	14-4338-35
Specific IgE (Conjugate, Curve Controls)	96, 2 pairs CC	10-9462-02
Specific IgE Conjugate	6 x 96	10-9463-02
Specific IgE Calibrators	1 curve	10-9460-01
Specific IgE Curve Controls	3 pairs	10-9408-01
IgE/ECP/Tryptase Sample Diluent	6 x 3.0 ml	10-9256-01
Specific IgE Anti-IgE ImmunoCAP	16	14-4417-01
System reagents, see page 52		

Specific IgG***

ImmunoCAP Specific IgG measures allergen-specific IgG antibodies in human serum and plasma. Tests for specific IgG antibodies may be useful to investigate the immune response in patients exposed to allergens either through natural exposure or therapeutic interventions. More than 600 allergens are available for testing.



Reagents Phadia® 5000 / Phadia® 2500 / Phadia® 1000 / Phadia® 250

Product	Size	Art. No.
Specific IgG Conjugate 50***	2 x 50	10-9318-02
Specific IgG Calibrator Strip	1 curve	10-9327-01
Specific IgG Curve Control Strip	3 pairs	10-9349-01
IgA/IgG Calibrator ImmunoCAP	16	14-4424-01
Specific IgA/IgG Sample Diluent	6 x 50 ml	10-9361-01
System reagents, see page 45-48		
Controls		
ImmunoCAP Specific IgG/IgG4 Control L***	6 x 4	10-9473-02
ImmunoCAP Specific IgG/IgG4 i1 Control H***	6 x 4	10-9475-02
ImmunoCAP Specific IgG m3 Control H***	6 x 4	10-9500-02
Antigens/Allergens		
ImmunoCAP Antigens, see page 35		
ImmunoCAP Allergens, see page 17-34		

Reagents Phadia® 100

Product	Size	Art. No.
Specific IgG Conjugate***	2 x 48	10-9455-02
Specific IgG Calibrators	1 curve	10-9305-01
Specific IgG Curve Controls	3 pairs	10-9333-01
IgA/IgG Calibrator ImmunoCAP	16	14-4424-01
Specific IgA/IgG Sample Diluent	6 x 10 ml	10-9498-01
System reagents, see page 49		
Control		
ImmunoCAP Specific IgG/IgG4 Control L***	6 x 4	10-9473-02
ImmunoCAP Specific IgG/IgG4 i1 Control H***	6 x 4	10-9475-02
ImmunoCAP Specific IgG m3 Control H***	6 x 4	10-9500-02
Antigens/Allergens		
ImmunoCAP Antigens, see page 35		
ImmunoCAP Allergens, see page 17-34		

SlgG, are available for all allergens tested through PRiL.

*Due to state licensing, specific IgG tests are not available in New York state.

**Available through Phadia Immunology Reference Laboratory and outside the US. Contact Customer Service, 800-346-4364, for turnaround times.

*** Investigational Use Only (IUO). These products have not been cleared or approved for any clinical diagnostic use.

Specific IgG4***

ImmunoCAP Specific IgG4 measures allergen-specific IgG4 antibodies in human serum and plasma. Measurements of Specific IgG and/or Specific IgG4 antibodies have been used in clinical studies of many different allergic diseases including: asthma, allergic rhinitis, urticaria, eczema and gastrointestinal disorders. Increased concentrations of specific IgG4 antibodies also routinely occur in patients treated with allergen immunotherapy including immunotherapy with inhalant aeroallergens and patients treated with hymenoptera venoms, IgG and IgG4 antibodies are biomarkers of antigen exposure.

**Reagents Phadia® 5000 / Phadia® 2500 / Phadia® 1000 / Phadia® 250**

Product	Size	Art. No.
Specific IgG4 Conjugate 50***	2 x 50	10-9481-02
Specific IgG4 Calibrator Strip***	1 curve	10-9482-02
Specific IgG4 Curve Control Strip***	3 pairs	10-9483-02
IgA/IgG Calibrator ImmunoCAP	16	14-4424-01
Specific IgA/IgG Sample Diluent	6 x 50 ml	10-9361-01
System reagents, see page 48-51		

Controls

ImmunoCAP Specific IgG/IgG4 Control L***	6 x 4	10-9473-02
ImmunoCAP Specific IgG/IgG4 i1 Control H***	6 x 4	10-9475-02

Allergens

ImmunoCAP Allergens, see page 17-34

Reagents Phadia® 100

Product	Size	Art. No.
Specific IgG4 Conjugate***	48	10-9465-02
Specific IgG4 Calibrators***	1 curve	10-9466-02
Specific IgG4 Curve Controls***	3 pairs	10-9467-02
IgA/IgG Calibrator ImmunoCAP	16	14-4424-01
Specific IgA/IgG Sample Diluent	6 x 10 ml	10-9498-01
System reagents, see page 52		

Control

ImmunoCAP Specific IgG/IgG4 Control L***	6 x 4	10-9473-02
ImmunoCAP Specific IgG/IgG4 i1 Control H***	6 x 4	10-9475-02

Allergens

ImmunoCAP Allergens, see page 17-34

SigG4 are available for all allergens tested through PRIL.

**Available through Phadia Immunology Reference Laboratory and outside the US. Contact Customer Service, 800-346-4364, for turnaround times.

*** Investigational Use Only (IUO). These products have not been cleared or approved for any clinical diagnostic use.

ImmunoCAP®

Specific IgA***

ImmunoCAP Specific IgA measures allergen-specific IgA antibodies in human serum, plasma, and saliva.



Reagents Phadia® 100

Product	Size	Art. No.
Specific IgA Conjugate***	48	10-9458-02
Specific IgA Calibrators***	1 curve	10-9304-01
Specific IgA Curve Controls***	3 pairs	10-9308-01
IgA/IgG Calibrator ImmunoCAP	16	14-4424-01
Specific IgA/IgG Sample Diluent	6 x 10 ml	10-9498-01
System reagents, see page 52		

Allergens

ImmunoCAP Allergens, see page 17-34

SigA are available for all allergens tested through PRiL.

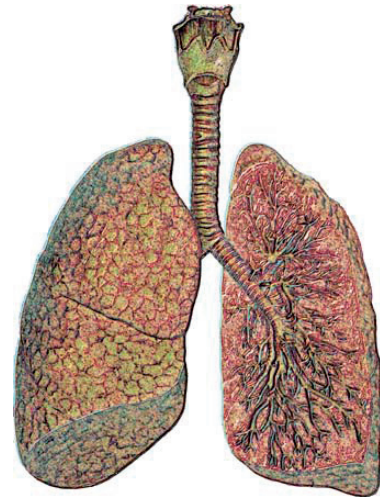
**Available through Phadia Immunology Reference Laboratory and outside the US. Contact Customer Service, 800-346-4364, for turnaround times.

*** Investigational Use Only (IUO). These products have not been cleared or approved for any clinical diagnostic use.

ECP***

ImmunoCAP ECP measures the level of Eosinophil Cationic Protein (ECP) in serum.

ECP is a highly cytotoxic protein found in eosinophil granules. Eosinophils are cells chiefly responsible for producing the inflammation characteristic of asthma. When eosinophils in the airway are activated, they undergo degranulation causing airway epithelial damage, desquamation and chronic inflammatory disease of the airway. ECP is released from activated eosinophils during the inflammatory process.

**Reagents Phadia® 1000 / Phadia® 250**

Product	Size	Art. No.
ECP Conjugate 50***	2 x 50	10-9321-02
ECP Calibrator Strip***	1 curve	10-9345-02
ECP Curve Control Strip***	6 x 1 CC	10-9352-02
ECP Anti-ECP***	16	14-4515-02
IgE/ECP/Tryptase Sample Diluent System reagents, see page 50-51	50 ml	10-9360-01
Control		
ImmunoCAP ECP Control***	6 x 0.5 ml	10-9269-02

Reagents Phadia® 100

Product	Size	Art. No.
ECP (Conjugate, Curve Control)***	96, 4CC	10-9520-02
ECP Calibrators***	1 curve	10-9260-02
ECP Curve Control***	6 vials	10-9278-02
ECP Anti-ECP**	16	14-4515-02
IgE/ECP/Tryptase Sample Diluent System reagents, see page 52	6 x 3.0 ml	10-9256-01
Control		
ImmunoCAP ECP Control***	6 x 0.5 ml	10-9269-02

**Available through Phadia Immunology Reference Laboratory and outside the US. Contact Customer Service, 800-346-4364, for turnaround times.

*** Investigational Use Only (IUO). These products have not been cleared or approved for any clinical diagnostic use.

Tryptase

ImmunoCAP Tryptase measures the total level of both alpha-tryptase and beta-tryptase in serum or plasma.

Mature beta-tryptase, stored in granules, is released during mast cell activation, *e.g.*, anaphylaxis.

Increased levels of tryptase may indicate an increased mast cell burden, *e.g.*, systemic mastocytosis.

**Reagents Phadia® 1000 / Phadia® 250**

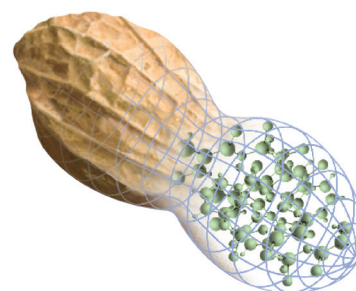
Product	Size	Art. No.
Tryptase Conjugate 50	2 x 50	10-9329-02
Tryptase Calibrator Strip	1 curve	10-9330-01
Tryptase Curve Control Strip	6 x 1 CC	10-9351-01
Tryptase Anti-Tryptase	16	14-4518-01
IgE/ECP/Tryptase Sample Diluent	50 ml	10-9360-01
Control		
ImmunoCAP Tryptase Control	6 x 0.5 ml	10-9370-01

Reagents Phadia® 100

Product	Size	Art. No.
Tryptase (Conjugate, Curve Control)	48, 4CC	10-9521-02
Tryptase Calibrators	1 curve	10-9302-01
Tryptase Curve Control	6 vials	10-9341-01
Tryptase Anti-Tryptase	16	14-4518-01
IgE/ECP/Tryptase Sample Diluent	6 x 3.0 ml	10-9256-01
System reagents, see page 52		
Control		
ImmunoCAP Tryptase Control	6 x 0.5 ml	10-9370-01

Allergen components

ImmunoCAP Allergen Component tests for IgE antibodies use purified or recombinant proteins to identify and quantify the levels of IgE antibodies at the molecular level. These assays offer the unique opportunity to assess a person's allergic sensitization pattern at the molecular level. Different component groups often elicit different types of reactions, so testing them will indicate if a patient's prior symptoms or positive test results were caused by allergy to a given substance or by a cross-reaction with another allergen. Component testing also helps the clinician weigh a patient's risk of a systemic reaction versus a more mild or localized response.



Allergen components, native and recombinant

Product		Code	Size	Art. No.	Status	Category Code
Grass pollens						
nCyn d 1 Bermuda grass	<i>Cynodon dactylon</i>	g216	10	14-4972-01	FDA Cleared	57XX
rPhl p 1 Timothy	<i>Phleum pratense</i>	g205	10	14-5234-01	FDA Cleared	57XX
rPhl p 2 Timothy	<i>Phleum pratense</i>	g206	10	14-5235-01	FDA Cleared	57XX
nPhl p 4 Timothy	<i>Phleum pratense</i>	Rg208	10	14-5288-10	PIRL	
rPhl p 6 Timothy	<i>Phleum pratense</i>	g209	10	14-5289-01	FDA Cleared	57XX
rPhl p 7 Timothy	<i>Phleum pratense</i>	g210	10	14-5290-01	FDA Cleared	57XX
rPhl p 11 Timothy	<i>Phleum pratense</i>	Rg211	10	14-5291-10	PIRL	
rPhl p 12 Profilin, Timothy	<i>Phleum pratense</i>	g212	10	14-5292-01	FDA Cleared	57XX
rPhl p 1, rPhl p 5b Timothy	<i>Phleum pratense</i>	g213	10	145312-01	PIRL	
rPhl p 7, rPhl p 12 Timothy	<i>Phleum pratense</i>	g214	10	14-5313-01	PIRL	
rPhl p 5b Timothy	<i>Phleum pratense</i>	g215	10	14-5338-01	FDA Cleared	57XX
Weed pollens						
nAmb a 1 Ragweed	<i>Ambrosia elatior</i>	w230	10	14-4969-01	FDA Cleared	57XX
nArt v 1 Mugwort	<i>Artemisia vulgaris</i>	w231	10	14-4970-01	FDA Cleared	57XX
nArt v 3 LTP, Mugwort	<i>Artemisia vulgaris</i>	w233	10	14-4983-01	FDA Cleared	57XX
rPar j 2 LPT, Wall pellitory	<i>Parietaria judaica</i>	w211	10	14-5311-01	PIRL	
nSal k 1 Saltwort	<i>Salsola kali</i>	w232	10	14-4978-01	PIRL	
rPla l 1 Plantain	<i>Plantago lanceolata</i>	w234	10	14-5751-01	PIRL	
Tree pollens						
rBet v 1 PR-10, Birch	<i>Betula verrucosa</i>	t215	10	14-5225-01	FDA Cleared	57XX
rBet v 2 Profilin, Birch	<i>Betula verrucosa</i>	t216	10	14-5226-01	FDA Cleared	57XX
rBet v 4 Birch	<i>Betula verrucosa</i>	t220	10	14-5287-01	FDA Cleared	57XX
rBet v 6 Birch	<i>Betula verrucosa</i>	t225	10	14-5345-01	FDA Cleared	57XX
rBet v 2, rBet v 4 Birch	<i>Betula verrucosa</i>	t221	10	14-5310-01	PIRL	
nCup a 1 Cypress	<i>Cupressus arizonica</i>	t226	10	14-4977-01	PIRL	
rOle e 1 Olive	<i>Olea europaea</i>	t224	10	14-5705-01	FDA Cleared	57XX
nOle e 7 LTP, Olive	<i>Olea europaea</i>	t227	10	14-4993-01	FDA Cleared	57XX
rOle e 9, Olive	<i>Olea europaea</i>	t240	10	14-4999-01	FDA Cleared	57XX
rPla a 1 Maple leaf sycamore, London plane	<i>Platanus acerifolia</i>	t241	10	14-5957-01	PIRL	
Microorganisms						
rAlt a 1	<i>Alternaria alternata</i>	m229	10	14-5346-01	FDA Cleared	57XX
rAsp f 1	<i>Aspergillus fumigatus</i>	m218	10	14-5293-01	PIRL	
rAsp f 2	<i>Aspergillus fumigatus</i>	m219	10	14-5294-01	PIRL	
rAsp f 3	<i>Aspergillus fumigatus</i>	Rm220	10	14-5295-10	ASR	57XX
rAsp f 4	<i>Aspergillus fumigatus</i>	Rm221	10	14-5296-10	ASR	57XX
rAsp f 6	<i>Aspergillus fumigatus</i>	m222	10	14-5297-01	PIRL	
Epidermals and animal proteins						
nBos d 6 BSA, Cow	<i>Bos spp.</i>	Re204	10	14-5009-10	ASR	57XX
rCan f 1 Dog	<i>Canis familiaris</i>	e101	10	14-4955-01	FDA Cleared	57XX
rCan f 2 Dog	<i>Canis familiaris</i>	e102	10	14-4956-01	FDA Cleared	57XX
nCan f 3 Dog serum albumin	<i>Canis familiaris</i>	e221	10	14-5241-01	FDA Cleared	57XX
rCan f 5 Dog	<i>Canis familiaris</i>	e226	10	14-4998-01	FDA Cleared	57XX
rFel d 1 Cat	<i>Felis domesticus</i>	e94	10	14-4905-01	FDA Cleared	57XX
rFel d 4 Cat	<i>Felis domesticus</i>	e228	10	14-5702-01	FDA Cleared	57XX
rEqu c 1 Horse	<i>Equus caballus</i>	e227	10	14-5700-01	FDA Cleared	57XX
nFel d 2 Cat serum albumin	<i>Felis domesticus</i>	e220	10	14-5240-01	FDA Cleared	57XX
nSus s Pig serum albumin, Swine	<i>Sus scrofa</i>	e222	10	14-5242-01	PIRL	
Mites						
nDer p 1 House dust mite	<i>Dermatophagoides Pteronyssinus</i>	d202	10	14-4966-01	FDA Cleared	57XX
nDer p 1 House dust mite	<i>Dermatophagoides Pteronyssinus</i>	d202	10	14-5996-01	Pending FDA	57XX
rDer p 2 House dust mite	<i>Dermatophagoides Pteronyssinus</i>	d203	10	14-4967-01	FDA Cleared	57XX
rDer p 10 Tropomyosin, House dust mite	<i>Dermatophagoides Pteronyssinus</i>	d205	10	14-4985-01	FDA Cleared	57XX

ASR (Analyte Specific Reagent). Analytical and performance characteristics are not established. Requires CLIA High Complexity.

Available through Phadia Immunology Reference Laboratory and outside the US. Contact Customer Service, 800-346-4364, for turnaround times.

Allergen components, native and recombinant

Product		Code	Size	Art. No.	Status	Category Code
Venoms						
rApi m 1 Phospholipase A2, Honey bee	<i>Apis mellifera</i>	i208	10	14-4987-01	PIRL	57XX
rVes v 1 Phospholipase A1, Common wasp	<i>Vespula vulgaris</i>	i211	10	14-4995-01	PIRL	
rVes v 5 Common wasp	<i>Vespula vulgaris</i>	i209	10	14-4992-01	PIRL	
rPol d 5 Paper wasp	<i>Polistes dominulus</i>	i210	10	14-4994-01	PIRL	
Occupational						
rHev b 1 Latex	<i>Hevea brasiliensis</i>	k215	10	14-5324-01	PIRL	57XX
rHev b 3 Latex	<i>Hevea brasiliensis</i>	k217	10	14-5326-01	PIRL	
rHev b 5 Latex	<i>Hevea brasiliensis</i>	k218	10	14-5327-01	PIRL	
rHev b 6.01 Latex	<i>Hevea brasiliensis</i>	k219	10	14-5328-01	PIRL	
rHev b 6.02 Latex	<i>Hevea brasiliensis</i>	k220	10	14-5329-01	PIRL	
rHev b 8 Profilin, Latex	<i>Hevea brasiliensis</i>	k221	10	14-5330-01	PIRL	
rHev b 9 Latex	<i>Hevea brasiliensis</i>	k222	10	14-5331-01	PIRL	
rHev b 11 Latex	<i>Hevea brasiliensis</i>	k224	10	14-5333-01	PIRL	
Occupational / Enzymes						
Alkalase	<i>Bacillus spp.</i>	k205	10	14-5126-01	PIRL	57XX
nAna c 2 Bromelain, Pineapple	<i>Ananas comosus</i>	k202	10	14-5127-01	PIRL	
nAsp o 21 alpha-amylase	<i>Aspergillus oryzae</i>	k87	10	14-4370-01	FDA Cleared	53FC
nCar p 1 Papain, Papaya	<i>Carica papaya</i>	Rk201	10	14-5130-10	ASR	57XX
nGal d 4 Lysozyme, Egg	<i>Gallus spp.</i>	Rk208	10	14-5128-10	ASR	57XX
Maxatase	<i>Bacillus licheniformis</i>	k204	10	14-5129-01	PIRL	
Savinase	<i>Bacillus spp.</i>	k206	10	14-5132-01	PIRL	
nSus s Pepsin, Swine	<i>Sus scrofa</i>	k213	10	14-5258-01	PIRL	
Foods						
rAct d 8 PR-10, Kiwi	<i>Actinidia deliciosa</i>	f430	10	14-4984-01	PIRL	
rApi g 1.01 PR-10, Celery	<i>Apium graveolens</i>	f417	10	14-4957-01	PIRL	
rAra h 1 Peanut	<i>Arachis hypogaea</i>	f422	10	14-4963-01	FDA Cleared	53PC
rAra h 2 Peanut	<i>Arachis hypogaea</i>	f423	10	14-4964-01	FDA Cleared	53PC
rAra h 3 Peanut	<i>Arachis hypogaea</i>	f424	10	14-4965-01	FDA Cleared	53PC
rAra h 8 PR-10, Peanut	<i>Arachis hypogaea</i>	f352	10	14-5341-01	FDA Cleared	53PC
rAra h 9 LTP, Peanut	<i>Arachis hypogaea</i>	f427	10	14-4980-01	FDA Cleared	53PC
rAna o 3, Cashew nut	<i>Anacardium occidentale</i>	f443	10	14-5760-01	PIRL	
rBer e 1 Brazil nut	<i>Bertholletia excelsa</i>	f354	10	14-5343-01	FDA Cleared	57XX
nBos d 4 alpha-lactalbumin, Milk	<i>Bos spp.</i>	f76	10	14-4522-01	FDA Cleared	53FC
nBos d 5 beta-lactoglobulin, Milk	<i>Bos spp.</i>	f77	10	14-4523-01	FDA Cleared	53FC
nBos d 8 Casein, Milk	<i>Bos spp.</i>	f78	10	14-4524-01	FDA Cleared	53FC
nBos d Lactoferrin, Milk	<i>Bos spp.</i>	f334	10	14-5253-01	PIRL	
rCor a 1 PR-10, Hazel nut	<i>Corylus avellana</i>	f428	10	14-4981-01	FDA Cleared	57XX
rCor a 8 LTP, Hazel nut	<i>Corylus avellana</i>	f425	10	14-4968-01	FDA Cleared	57XX
nCor a 9, Hazel nut	<i>Corylus avellana</i>	f440	10	14-5788-01	PIRL	
rCor a 14, Hazel nut	<i>Corylus avellana</i>	f439	10	14-5754-01	PIRL	
rCyp c 1 Carp	<i>Cyprinus carpio</i>	f355	10	14-5344-01	PIRL	
rGad c 1 Cod	<i>Gadus morhua</i>	f426	10	14-4971-01	PIRL	
nGal d 1 Ovomucoid, Egg	<i>Gallus spp.</i>	f233	10	14-4805-01	FDA Cleared	53FC
nGal d 2 Ovalbumin, Egg	<i>Gallus spp.</i>	f232	10	14-4804-01	FDA Cleared	53FC
nGal d 3 Conalbumin, Egg	<i>Gallus spp.</i>	f323	10	14-5222-01	PIRL	
rGly m 4 PR-10, Soy	<i>Glycine max</i>	f353	10	14-5340-01	FDA Cleared	57XX
nGly m 5 beta-conglycinin, Soy	<i>Glycine max</i>	f431	10	14-4990-01	FDA Cleared	57XX
nGly m 6 Glycinin	<i>Glycine max</i>	f432	10	14-4991-01	FDA Cleared	57XX
rJug r 1, Walnut	<i>Juglans spp.</i>	f441	10	14-5762-01	PIRL	
rJug r 3 LTP, Walnut	<i>Juglans spp.</i>	f442	10	14-5954-01	PIRL	
rMal d 1 PR-10, Apple	<i>Malus domestica</i>	f434	10	14-5703-01	PIRL	
rMal d 3 LTP, Apple	<i>Malus domestica</i>	f435	10	14-5704-01	PIRL	
rPen a 1 Tropomyosin, Shrimp	<i>Penaeus aztecus</i>	f351	10	14-5335-01	FDA Cleared	57XX
rPru p 1 PR-10, Peach	<i>Prunus persica</i>	f419	10	14-4960-01	FDA Cleared	57XX
rPru p 3 LTP, Peach	<i>Prunus persica</i>	f420	10	14-4961-01	FDA Cleared	57XX
rPru p 4 Profilin, Peach	<i>Prunus persica</i>	f421	10	14-4962-01	FDA Cleared	57XX
rTri a 14 LTP, Wheat	<i>Triticum aestivum</i>	f433	10	14-5701-01	PIRL	
Gladin, Wheat		f98	10	14-5752-01	PIRL	
rTri a 19 Omega-5 Gliadin, Wheat	<i>Triticum spp.</i>	f416	10	14-4954-01	PIRL	
Miscellaneous						
MUXF3 CCD, Bromelain		Ro214	10	14-5339-01	PIRL	FDA Cleared 57XX
Gal-alpha-1,3-Gal Thyroglobulin, bovine		Ro215	10	14-5997-01	PIRL	

ASR (Analyte Specific Reagent). Analytical and performance characteristics are not established. Requires CLIA High Complexity.

Available through Phadia Immunology Reference Laboratory and outside the US. Contact Customer Service, 800-346-4364, for turnaround times.

ImmunoCAP® Allergen Component Packages Ordered Through PiRL

Product
Foods
Peanut Component Package f422, f423, f424, f352, f427, f13 rAra h 1, rAra h 2, rAra h 3, rAra h 8 PR-10, rAra h 9 LTP, Peanut (complete allergen)
Egg Component Package f233, f232, f323, f1 nGal d 1 Ovomuroid, nGal d 2 Ovalbumin, nGal d 3 Conalbumin, Egg white (complete allergen)
Milk Component Package f76, f77, f78, f334, f2 nBos d 4 alpha-lactalbumin, nBos d 5 beta-lactoglobulin, nBos d 8 Casein, nBos d Lactoferrin, Milk (complete allergen)
Wheat Component Package* f416, f4, f98, f433 rTri a 19 Omega-5 Gliadin, Wheat (complete allergen), Gliadin Wheat, rTri a 14 LTP, Wheat
Kiwi Component Package** f430, f84 rAct d 8 PR-10, Kiwi (complete allergen)
Celery Component Package** f417, g212, f85 rApi g 1.01 PR-10, rPhl p 12, Celery (complete allergen)
Brazil Nut Component Package† f354, f18 rBer e 1, Brazil nut (complete allergen)
Hazelnut Component Package* f428, f425, f17 rCor a 1 PR-10, rCor a 8 LTP, Hazel nut (complete allergen), nCor a 9, Hazel nut, rCor a 14, Hazel nut
Walnut Component Package* f441, f442, f256 rJug r 1, Walnut, rJug r 3 LTP, Walnut, Walnut (complete allergen)
Tree Nut Component Package* f443, f256, f17, f18 Cashew nut, Walnut, Hazelnut, Brazil nut
Fish Component Package** f355, f426, f3 rCyp c 1, rGad c 1, Cod (complete allergen)
Soy Component Package* f353, f14, f431, f432 rGly m 4 PR-10, Soy (complete allergen), nGly m 5 Beta-conglycinin, nGly m 6 Glycinin
Shrimp Component Package f351, f24 rPen a 1 Tropomyosin, Shrimp (complete allergen)
Stone Fruit Component Package** f419, f420, f421, f95, f242 rPru p 1 PR-10, rPru p 3 LTP, Stone fruit primary (complete allergen)
Epidermals and Animal Proteins
Dog Component Package** e101, e102, e221, e5 rCan f 1, rCan f 2, nCan f 3 Dog serum albumin, Dog (complete allergen)
Cat Component Package** e94, e220, e1 rFel d 1, nFel d 2 Cat serum albumin, Cat (complete allergen)
Grass Pollens
Bermuda Grass Component Package** g216, g2 nCyn d 1 Bermuda grass, Bermuda grass (complete allergen)
Timothy Grass Component Package** g205, g206, g208, g209, g210, g211, g212, g215, g6 rPhl p 1, rPhl p 2, nPhl p 4, rPhl p 6, rPhl p 7, rPhl p 11, rPhl p 12, rPhl p 5b, Timothy grass (complete allergen)
Microorganisms
Alternaria Component Package** m229, m6 rAlt a 1, Alternaria (complete allergen)
Aspergillus Component Package** m218, m219, m220, m221, m222, m3 rAsp f 1, rAsp f 2, rAsp f 3, rAsp f 4, rAsp f 6, Aspergillus (complete allergen)

SlgE, SlgA, SlgG, and SlgG4 are available for all allergens ordered through PiRL.

Turnaround time may vary depending on allergen; please call customer service 1.800.346.4364 option 1 for more information.

*Test results available from Phadia Immunology Reference Laboratory (PiRL) may be produced by assays classified as Laboratory Developed Tests. These assays have been developed and validated by PiRL. Interpretation of all test results is the sole responsibility of the licensed healthcare professional ordering the test.

†Component packages available as special order.

ImmunoCAP® Allergen Component Packages Ordered Through PiRL, con't

Mites

House Dust Mite Component Package*

d202, d203, d205, d1

nDer p 1, rDer p 2, rDer p 10 Tropomyosin, House dust mite (complete allergen)

Occupational

Latex Component Package*†

k215, k217, k218, k219, k220, k221, k222, k224, k82, o214

rHev b 1, rHev b 3, rHev b 5, rHev b 6.01, rHev b 6.02, rHev b 8 Profilin, rHev b 9, rHev b 11, Latex (complete allergen), CCD MUXF3 from Bromelain

Tree Pollens

Birch Component Package*

t215, t216, t220, t225, t221, t3

rBet v 1 PR-10, rBet v 2 Profilin, t220 rBet v 4, rBet v 2, rBet v 4, Birch (complete allergen)

Cypress Component Package*

t226, t23

nCup a 1, Italian/funeral cypress (complete allergen)

Venoms

Honey Bee Component Package*

i208, i1, o214

rApi m 1 Phospholipase A2, Honey bee (complete allergen), CCD MUXF3 from Bromelain

Common Wasp Component Package*

i209, i3, o214

rVes v 5, Common wasp (complete allergen), CCD MUXF3 from Bromelain

Paper Wasp Component Package*

i201, i4, o214

rPol d 5, Paper wasp (complete allergen), CCD MUXF3 from Bromelain

Weed Pollens

Ragweed Component Package*

w230, w1

nAmb a 1, Ragweed (complete allergen)

Mugwort Component Package

w231, w233, w6

nArt v 1, nArt v 3, Mugwort (complete allergen)

Saltwort Component Package*

w232, w11

nSal k 1, Saltwort/Russian thistle (complete allergen)

SlgE, SlgA, SlgG, and SlgG4 are available for all allergens ordered through PiRL.

Turnaround time may vary depending on allergen; please call customer service 1.800.346.4364 option 1 for more information.

*Test results available from Phadia Immunology Reference Laboratory (PiRL) may be produced by assays classified as Laboratory Developed Tests. These assays have been developed and validated by PiRL. Interpretation of all test results is the sole responsibility of the licensed healthcare professional ordering the test.

Allergens

In patients suffering from extrinsic asthma, hay fever or atopic eczema, symptoms develop immediately after exposure to specific allergens. This immediate (atopic or anaphylactic) type of allergy is a function of a special type of serum antibodies belonging to the IgE class of immunoglobulins.

The allergen list of more than 600 allergens will continuously be updated.



Grass pollens

Product		Code	Size	Art. No.	Status	Category Code
Bahia grass	Paspalum notatum	g17	16	14-4189-01	FDA Cleared	53GX
Barley	Hordeum vulgare	g201	10	14-4821-01	FDA Cleared	53FX
Bermuda grass	Cynodon dactylon	g2	16	14-4131-01	FDA Cleared	53GX
Brome grass	Bromus inermis	g11	16	14-4238-01	FDA Cleared	53GX
Canary grass	Phalaris arundinacea	g71	10	14-4360-01	FDA Cleared	53FR
Cocksfoot	Dactylis glomerata	g3	16	14-4117-01	FDA Cleared	53GX
Common reed	Phragmites communis	g7	16	14-4187-01	FDA Cleared	53GE
Cultivated oat	Avena sativa	g14	16	14-4239-01	FDA Cleared	53GX
Cultivated rye	Secale cereale	g12	16	14-4101-01	FDA Cleared	53GE
Cultivated wheat	Triticum aestivum	g15	16	14-4188-01	FDA Cleared	53GE
False oat-grass	Arrhenatherum elatius	Rg204	10	14-5154-10	ASR	56XX
Johnson grass	Sorghum halepense	g10	16	14-4138-01	FDA Cleared	53GX
Maize, Corn	Zea mays	g202	10	14-4822-01	FDA Cleared	53FX
Meadow fescue	Festuca elatior	g4	16	14-4133-01	FDA Cleared	53GE
Meadow foxtail	Alopecurus pratensis	g16	16	14-4240-01	FDA Cleared	53GE
Meadow grass, Kentucky blue	Poa pratensis	g8	16	14-4136-01	FDA Cleared	53GX
Redtop, Bentgrass	Agrostis stolonifera	g9	16	14-4137-01	FDA Cleared	53GX
Rye-grass	Lolium perenne	g5	16	14-4134-01	FDA Cleared	53GX
Salt grass	Distichlis spicata	Rg203	10	14-5145-10	ASR	56XX
Sweet vernal grass	Anthoxanthum odoratum	g1	16	14-4130-01	FDA Cleared	53GE
Timothy grass	Phleum pratense	g6	16	14-4100-01	FDA Cleared	53GX
Velvet grass	Holcus lanatus	g13	16	14-4139-01	FDA Cleared	53GE
Wild rye grass	Elymus triticoides	g70	10	14-4344-01	FDA Cleared	53FX
Allergen Components						
nCyn d 1 Bermuda grass	Cynodon dactylon	g216	10	14-4972-01	FDA Cleared	57XX
rPhl p 1 Timothy	Phleum pratense	g205	10	14-5234-01	FDA Cleared	57XX
rPhl p 2 Timothy	Phleum pratense	g206	10	14-5235-01	FDA Cleared	57XX
nPhl p 4 Timothy	Phleum pratense	g208	10	14-5288-01	PIRL	
rPhl p 6 Timothy	Phleum pratense	g209	10	14-5289-01	FDA Cleared	57XX
rPhl p 7 Timothy	Phleum pratense	g210	10	14-5290-01	FDA Cleared	57XX
rPhl p 11 Timothy	Phleum pratense	g211	10	14-5291-01	PIRL	
rPhl p 12 Profilin, Timothy	Phleum pratense	g212	10	14-5292-01	FDA Cleared	57XX
rPhl p 1, rPhl p 5b Timothy	Phleum pratense	g213	10	14-5312-01	PIRL	
rPhl p 7, rPhl p 12 Timothy	Phleum pratense	g214	10	14-5313-01	PIRL	
rPhl p 5b Timothy	Phleum pratense	g215	10	14-5338-01	FDA Cleared	57XX
Mixes						
g3, g4, g5, g6, g8 <i>Dactylis glomerata, Festuca elatior, Lolium perenne, Phleum pratense, Poa pratensis</i>		gx1	16	14-4163-01	FDA Cleared	53HX
g2, g5, g6, g8, g10, g17 <i>Cynodon dactylon, Lolium perenne, Phleum pratense, Poa pratensis, Sorghum halepense, Paspalum notatum</i>		gx2	16	14-4192-01	FDA Cleared	53HX
g1, g5, g6, g12, g13 <i>Anthoxanthum odoratum, Lolium perenne, Phleum pratense, Secale cereale, Holcus lanatus</i>		gx3	16	14-4193-01	FDA Cleared	53HX
g1, g5, g7, g12, g13 <i>Anthoxanthum odoratum, Lolium perenne, Phragmites communis, Secale cereale, Holcus lanatus</i>		gx4	16	14-4194-01	FDA Cleared	53HX
g2, g5, g10, g11, g13, g17 <i>Cynodon dactylon, Lolium perenne, Sorghum halepense, Bromus inermis, Holcus lanatus, Paspalum notatum</i>		Rgx6	10	14-5200-10	ASR	53FS

ASR (Analyte Specific Reagent. Analytical and performance characteristics are not established. Requires CLIA High Complexity.

Available through Phadia Immunology Reference Laboratory and outside the US. Contact Customer Service, 800-346-4364, for turnaround times.

Weed pollens

Product		Code	Size	Art. No.	Status	Category Code
Alfalfa	<i>Medicago sativa</i>	Rw45	10	14-4951-10	ASR	56XX
Camomile	<i>Matricaria chamomilla</i>	w206	10	14-5020-01	PIRL	
Careless weed	<i>Amaranthus palmeri</i>	Rw82	10	14-4953-10	ASR	56XX
Cocklebur	<i>Xanthium commune</i>	w13	16	14-4251-01	FDA Cleared	53GE
Common pigweed	<i>Amaranthus retroflexus</i>	w14	16	14-4252-01	FDA Cleared	53GX
Common ragweed	<i>Ambrosia elatior (A. artemisiifolia)</i>	w1	16	14-4162-01	FDA Cleared	53GX
Dandelion	<i>Taraxacum vulgare</i>	w8	16	14-4155-01	FDA Cleared	53GE
Dog fennel	<i>Eupatorium capillifolium</i>	Rw46	10	14-4952-10	ASR	56XX
False ragweed	<i>Franseria acanthicarpa</i>	w4	16	14-4247-01	FDA Cleared	53GX
Firebush (Kochia)	<i>Kochia scoparia</i>	w17	16	14-4255-01	FDA Cleared	53GX
Giant ragweed	<i>Ambrosia trifida</i>	w3	16	14-4153-01	FDA Cleared	53GE
Goldenrod	<i>Solidago virgaurea</i>	w12	16	14-4250-01	FDA Cleared	53GE
Goosefoot, Lamb's quarters	<i>Chenopodium album</i>	w10	16	14-4157-01	FDA Cleared	53GX
Japanese Hop	<i>Humulus scandens</i>	w22	16	14-4452-01	PIRL	
Lupin	<i>Lupinus spp.</i>	Rw207	10	14-5022-10	ASR	56XX
Marguerite, Ox-eye daisy	<i>Chrysanthemum leucanthemum</i>	w7	16	14-4154-01	FDA Cleared	53GE
Mugwort	<i>Artemisia vulgaris</i>	w6	16	14-4103-01	FDA Cleared	53GX
Nettle	<i>Urtica dioica</i>	w20	16	14-4257-01	FDA Cleared	53GE
Plantain (English), Ribwort	<i>Plantago lanceolata</i>	w9	16	14-4156-01	FDA Cleared	53GX
Rape	<i>Brassica napus</i>	Rw203	10	14-5024-10	ASR	56XX
Rough marshelder	<i>Iva ciliata</i>	w16	16	14-4254-01	FDA Cleared	53GX
Saltwort (prickly), Russian thistle	<i>Salsola kali (pestifer)</i>	w11	16	14-4249-01	FDA Cleared	53GX
Scale, Lenscale	<i>Atriplex lentiformis</i>	w15	16	14-4253-01	FDA Cleared	53GX
Sheep sorrel	<i>Rumex acetosella</i>	w18	16	14-4256-01	FDA Cleared	53GE
Sugar-beet	<i>Beta vulgaris</i>	Rw210	10	14-5192-10	ASR	56XX
Sunflower	<i>Helianthus annuus</i>	Rw204	10	14-5025-10	ASR	56XX
Wall pellitory	<i>Parietaria officinalis</i>	w19	16	14-4186-01	FDA Cleared	53GX
Wall pellitory	<i>Parietaria judaica</i>	w21	16	14-4104-01	FDA Cleared	53GE
Western ragweed	<i>Ambrosia psilostachya</i>	w2	16	14-4152-01	FDA Cleared	53GX
Wormwood	<i>Artemisia absinthium</i>	w5	16	14-4248-01	FDA Cleared	53GE
Yellow dock	<i>Rumex crispus</i>	Rw23	10	14-4950-10	ASR	56XX
Allergen Components						
nAmb a 1 Ragweed	<i>Ambrosia elatior</i>	w230	10	14-4969-01	FDA Cleared	57XX
nArt v 1 Mugwort	<i>Artemisia vulgaris</i>	w231	10	14-4970-01	FDA Cleared	57XX
nArt v 3 LTP, Mugwort	<i>Artemisia vulgaris</i>	w233	10	14-4983-01	FDA Cleared	57XX
rPar j 2 LTP, Wall pellitory	<i>Parietaria judaica</i>	w211	10	14-5311-01	PIRL	
nSal k 1 Saltwort	<i>Salsola kali</i>	w232	10	14-4978-01	PIRL	
rPla l 1 Plantain	<i>Plantago lanceolata</i>	w234	10	14-5751-01	PIRL	
Mixes						
w1, w6, w9, w10, w11	<i>Ambrosia elatior, Artemisia vulgaris, Plantago lanceolata, Chenopodium album, Salsola kali</i>	wx1	16	14-4195-01	FDA Cleared	53HX
w2, w6, w9, w10, w15	<i>Ambrosia psilostachya, Artemisia vulgaris, Plantago lanceolata, Chenopodium album, Atriplex lentiformis</i>	wx2	16	14-4268-01	FDA Cleared	53HX
w6, w9, w10, w12, w20	<i>Artemisia vulgaris, Plantago lanceolata, Chenopodium album, Solidago virgaurea, Urtica dioica</i>	wx3	16	14-4196-01	FDA Cleared	53HX
w1, w6, w7, w8, w12	<i>Ambrosia elatior, Artemisia vulgaris, Chrysanthemum leucanthemum, Taraxacum vulgare, Solidago virgaurea</i>	wx5	16	14-4197-01	FDA Cleared	53HX
w9, w10, w11, w18	<i>Plantago lanceolata, Chenopodium album, Salsola kali, Rumex acetosella</i>	wx6	16	14-4198-01	FDA Cleared	53HX
w7, w8, w9, w10, w12	<i>Chrysanthemum leucanthemum, Taraxacum vulgare, Plantago lanceolata, Chenopodium album, Solidago virgaurea</i>	wx7	16	14-4269-01	FDA Cleared	53HX
w1, w2, w3	<i>Ambrosia elatior, Ambrosia psilostachya, Ambrosia trifida</i>	wx209	10	14-5026-01	PIRL	

ASR (Analyte Specific Reagent). Analytical and performance characteristics are not established. Requires CLIA High Complexity. Available through Phadia Immunology Reference Laboratory and outside the US. Contact Customer Service, 800-346-4364, for turnaround times.

Tree pollens						
Product		Code	Size	Art. No.	Status	Category Code
Acacia	<i>Acacia longifolia</i>	t19	16	14-4233-01	FDA Cleared	53GE
American beech	<i>Fagus grandifolia</i>	t5	16	14-4148-01	FDA Cleared	53GE
Australian pine	<i>Casuarina equisetifolia</i>	t73	10	14-4374-01	FDA Cleared	53FR
Bald cypress	<i>Taxodium distichum</i>	Rt37	10	14-4941-10	ASR	56XX
Bayberry	<i>Myrica cerifera</i>	Rt56	10	14-4947-10	ASR	56XX
Box-elder	<i>Acer negundo</i>	t1	16	14-4161-01	FDA Cleared	53GX
Cedar	<i>Libocedrus decurrens</i>	t212	10	14-5185-01	FDA Cleared	56XX
Cedar elm	<i>Ulmus crassifolia</i>	Rt45	10	14-4944-10	ASR	56XX
Chestnut	<i>Castanea sativa</i>	Rt206	10	14-5140-10	ASR	56XX
Common silver birch	<i>Betula verrucosa</i>	t3	16	14-4102-01	FDA Cleared	53GX
Cottonwood	<i>Populus deltoides</i>	t14	16	14-4229-01	FDA Cleared	53GX
Cypress	<i>Cupressus arizonica</i>	t222	10	14-5309-01	FDA Cleared	56XX
Date	<i>Phoenix canariensis</i>	Rt214	10	14-5218-10	ASR	56XX
Douglas fir	<i>Pseudotsuga taxifolia</i>	Rt207	10	14-5146-10	ASR	56XX
Elder	<i>Sambucus nigra</i>	Rt205	10	14-5002-10	ASR	56XX
Elm	<i>Ulmus americana</i>	t8	16	14-4226-01	FDA Cleared	53GX
Eucalyptus, Gum-tree	<i>Eucalyptus spp.</i>	t18	16	14-4232-01	FDA Cleared	53GX
European ash	<i>Fraxinus excelsior</i>	t25	10	14-4924-01	PIRL	
Grey alder	<i>Alnus incana</i>	t2	16	14-4146-01	FDA Cleared	53GX
Hackberry	<i>Celtis occidentalis</i>	Rt44	10	14-4943-10	ASR	56XX
Hazel	<i>Corylus avellana</i>	t4	16	14-4147-01	FDA Cleared	53GE
Horn beam	<i>Carpinus betulus</i>	Rt209	10	14-5148-10	ASR	56XX
Horse chestnut	<i>Aesculus hippocastanum</i>	t203	10	14-5003-01	PIRL	
Italian/Mediterranean/Funeral cypress	<i>Cupressus sempervirens</i>	t23	16	14-4237-01	FDA Cleared	53GE
Japanese cedar	<i>Cryptomeria japonica</i>	t17	16	14-4118-01	FDA Cleared	53GX
Linden	<i>Tilia cordata</i>	t208	10	14-4823-01	FDA Cleared	53FX
Maple leaf sycamore, London plane	<i>Platanus acerifolia</i>	t11	16	14-4228-01	FDA Cleared	53GX
Melaleuca, Cajeput-tree	<i>Melaleuca leucadendron</i>	t21	16	14-4235-01	FDA Cleared	53GE
Mesquite	<i>Prosopis juliflora</i>	t20	16	14-4234-01	FDA Cleared	53GX
Mountain juniper	<i>Juniperus sabinoides</i>	t6	16	14-4225-01	FDA Cleared	53GX
Mulberry	<i>Morus alba</i>	t70	10	14-4325-01	FDA Cleared	53FR
Oak	<i>Quercus alba</i>	t7	16	14-4149-01	FDA Cleared	53GX
Oil Palm	<i>Elaeis guineensis</i>	t223	10	14-5308-01	PIRL	
Olive	<i>Olea europaea</i>	t9	16	14-4150-01	FDA Cleared	53GX
Paloverde	<i>Cercidium floridum</i>	t219	10	14-5260-01	PIRL	
Pecan, Hickory	<i>Carya pecan</i>	t22	16	14-4236-01	FDA Cleared	53GX
Peppertree	<i>Schinus molle</i>	Rt217	10	14-5167-10	ASR	56XX
Pine	<i>Pinus radiata</i>	Rt213	10	14-5208-10	ASR	56XX
Privet	<i>Ligustrum vulgare</i>	t210	10	14-4834-01	FDA Cleared	53FX
Queen palm	<i>Arecastrum romanzoffianum</i>	t72	10	14-4373-01	FDA Cleared	53FR
Red cedar	<i>Juniperus virginiana</i>	Rt57	10	14-4948-10	ASR	56XX
Red mulberry	<i>Morus rubra</i>	Rt71	10	14-4949-10	ASR	56XX
Russian olive	<i>Elaeagnus angustifolia</i>	Rt54	10	14-4945-10	ASR	56XX
Scotch broom	<i>Cytisus scoparius</i>	Rt55	10	14-4946-10	ASR	56XX
Spruce	<i>Picea excelsa</i>	Rt201	10	14-5005-10	ASR	56XX
Sweet gum	<i>Liquidambar styraciflua</i>	Rt211	10	14-5155-10	ASR	56XX
Walnut	<i>Juglans californica</i>	t10	16	14-4227-01	FDA Cleared	53GX
White ash	<i>Fraxinus americana</i>	t15	16	14-4230-01	FDA Cleared	53GX
White hickory	<i>Carya tomentosa (syn. C. alba)</i>	Rt41	10	14-4942-10	ASR	56XX
White pine	<i>Pinus strobus</i>	t16	16	14-4231-01	FDA Cleared	53GE
Willow	<i>Salix caprea</i>	t12	16	14-4151-01	FDA Cleared	53GE
Virginia live oak	<i>Quercus virginiana</i>	Rt218	10	14-5252-10	ASR	56XX
Allergen Components						
rBet v 1 PR-10, Birch	<i>Betula verrucosa</i>	t215	10	14-5225-01	FDA Cleared	57XX
rBet v 2 Profilin, Birch	<i>Betula verrucosa</i>	t216	10	14-5226-01	FDA Cleared	57XX
rBet v 4 Birch	<i>Betula verrucosa</i>	t220	10	14-5287-01	FDA Cleared	57XX
rBet v 6 Birch	<i>Betula verrucosa</i>	t225	10	14-5345-01	FDA Cleared	57XX
rBet v 2, rBet v 4 Birch	<i>Betula verrucosa</i>	t221	10	14-5310-01	PIRL	
nCup a 1 Cypress	<i>Cupressus arizonica</i>	t226	10	14-4977-01	PIRL	
rOle e 1 Olive	<i>Olea europaea</i>	t224	10	14-5705-01	FDA Cleared	57XX
nOle e 7 LTP, Olive	<i>Olea europaea</i>	t227	10	14-4993-01	FDA Cleared	57XX
rOle e 9, Olive	<i>Olea europaea</i>	t240	10	14-4999-01	FDA Cleared	57XX
rPla a 1 Maple leaf sycamore, London Plane	<i>Platanus acerifolia</i>	t241	10	14-5957-01	PIRL	
Mixes						
t1, t3, t7, t8, t10	<i>Acer negundo, Betula verrucosa, Quercus alba, Ulmus americana, Juglans californica</i>	tx1	16	14-4199-01	FDA Cleared	53HX
t1, t7, t8, t14, t22	<i>Acer negundo, Quercus alba, Ulmus americana, Populus deltoides, Carya pecan</i>	tx2	16	14-4270-01	FDA Cleared	53HX
t6, t7, t8, t14, t20	<i>Juniperus sabinoides, Quercus alba, Ulmus americana, Populus deltoides, Prosopis juliflora</i>	tx3	16	14-4271-01	FDA Cleared	53HX
t7, t8, t11, t12, t14	<i>Quercus alba, Ulmus americana, Platanus acerifolia, Salix caprea, Populus deltoides</i>	tx4	16	14-4200-01	FDA Cleared	53HX

ASR (Analyte Specific Reagent). Analytical and performance characteristics are not established. Requires CLIA High Complexity.

Available through Phadia Immunology Reference Laboratory and outside the US. Contact Customer Service, 800-346-4364, for turnaround times.

Tree pollens, con't

Product	Code	Size	Art. No.	Status	Category Code
t2, t4, t8, t12, t14 <i>Alnus incana, Corylus avellana, Ulmus americana, Salix caprea, Populus deltoides</i>	tx5	16	14-4201-01	FDA Cleared	53HX
t1, t3, t5, t7, t10 <i>Acer negundo, Betula verrucosa, Fagus grandifolia, Quercus alba, Juglans californica</i>	tx6	16	14-4202-01	FDA Cleared	53HX
t9, t12, t16, t18, t19, t21 <i>Olea europaea, Salix caprea, Pinus strobus, Eucalyptus spp., Acacia longifolia, Melaleuca leucadendron</i>	tx7	16	14-4272-01	FDA Cleared	53HX
t1, t3, t4, t7, t11 <i>Acer negundo, Betula verrucosa, Corylus avellana, Quercus alba, Platanus acerifolia</i>	tx8	16	14-4273-01	FDA Cleared	53HX
t2, t3, t4, t7, t12 <i>Alnus incana, Betula verrucosa, Corylus avellana, Quercus alba, Salix caprea</i>	tx9	16	14-4274-01	FDA Cleared	53HX
t2, t3, t4, t15 <i>Alnus incana, Betula verrucosa, Corylus avellana, Fraxinus americana</i>	Rtx10	10	14-5183-10	ASR	53FS

Microorganisms

Product	Code	Size	Art. No.	Status	Category Code
<i>Acremonium kiliense</i>	m202	10	14-4830-01	FDA Cleared	54DX
<i>Alternaria alternata</i>	m6	16	14-4106-01	FDA Cleared	54DR
<i>Aspergillus flavus</i>	m228	10	14-5342-01	PIRL	
<i>Aspergillus fumigatus</i>	m3	16	14-4119-01	FDA Cleared	54DR
<i>Aspergillus niger</i>	m207	10	14-4831-01	FDA Cleared	54DX
<i>Aspergillus terreus</i>	m36	10	14-4920-01	PIRL	
<i>Aureobasidium pullulans</i>	m12	16	14-4263-01	FDA Cleared	54DY
<i>Bipolaris spicifera</i>	Rm46	10	14-4940-10	ASR	56XX
<i>Botrytis cinerea</i>	m7	16	14-4258-01	FDA Cleared	54DY
<i>Candida albicans</i>	m5	16	14-4120-01	FDA Cleared	54DR
<i>Chaetomium globosum</i>	Rm208	10	14-5202-10	ASR	56XX
<i>Cladosporium herbarum</i>	m2	16	14-4105-01	FDA Cleared	54DR
<i>Curvularia lunata</i>	m16	16	14-4267-01	FDA Cleared	54DY
<i>Epicoccum purpurascens</i>	m14	16	14-4265-01	FDA Cleared	54DY
<i>Fusarium proliferatum (F. moniliforme)</i>	m9	16	14-4260-01	FDA Cleared	54DY
<i>Setomelanomma rostrata (Helminthosporium halodes)</i>	m8	16	14-4259-01	FDA Cleared	54DY
<i>Malassezia spp.</i>	m227	10	14-5321-01	PIRL	
<i>Mucor racemosus</i>	m4	16	14-4145-01	FDA Cleared	54DY
<i>Penicillium chrysogenum (P. notatum)</i>	m1	16	14-4160-01	FDA Cleared	54DR
<i>Penicillium glabrum</i>	Rm209	10	14-5203-10	ASR	56XX
<i>Phoma betae</i>	m13	16	14-4264-01	FDA Cleared	54DY
<i>Pityrosporum orbiculare (syn. Malassezia)</i>	m70	10	14-4349-01	FDA Cleared	54DX
<i>Rhizopus nigricans</i>	m11	16	14-4262-01	FDA Cleared	54DY
<i>Staphylococcal enterotoxin A</i>	m80	10	14-4889-01	FDA Cleared	54DX
<i>Staphylococcal enterotoxin B</i>	m81	10	14-4890-01	FDA Cleared	54DX
<i>Staphylococcal enterotoxin C</i>	m223	10	14-5298-01	PIRL	
<i>Staphylococcal enterotoxin TSST</i>	Rm226	10	14-5301-10	ASR	56XX
<i>Stemphylium herbarum (S. botryosum)</i>	m10	16	14-4261-01	FDA Cleared	54DY
<i>Tilletia tritici</i>	Rm201	10	14-5029-10	ASR	56XX
<i>Trichoderma viride</i>	m15	16	14-4266-01	FDA Cleared	54DY
<i>Trichophyton mentagrophytes var. goetzii</i>	Rm210	10	14-5223-10	ASR	56XX
<i>Trichophyton mentagrophytes var. interdigitale</i>	Rm211	10	14-5224-10	ASR	56XX
<i>Trichophyton rubrum</i>	m205	16	14-4483-01	FDA Cleared	54DY
<i>Trichosporon pullulans</i>	Rm203	10	14-5027-10	ASR	56XX
<i>Ulocladium chartarum</i>	Rm204	10	14-5028-10	ASR	56XX
Allergen Components					
rAlt a 1 <i>Alternaria alternata</i>	m229	10	14-5346-01	FDA Cleared	57XX
rAsp f 1 <i>Aspergillus fumigatus</i>	m218	10	14-5293-01	PIRL	
rAsp f 2 <i>Aspergillus fumigatus</i>	m219	10	14-5294-01	PIRL	
rAsp f 3 <i>Aspergillus fumigatus</i>	Rm220	10	14-5295-10	ASR	57XX
Asp f 4 <i>Aspergillus fumigatus</i>	Rm221	10	14-5296-10	ASR	57XX
rAsp f 6 <i>Aspergillus fumigatus</i>	m222	10	14-5297-01	PIRL	
Mixes					
m1, m2, m3, m6 <i>Penicillium chrysogenum, Cladosporium herbarum, Aspergillus fumigatus, Alternaria alternata</i>	mx1	16	14-4204-01	FDA Cleared	53HX
m1, m2, m3, m5, m6, m8 <i>Penicillium chrysogenum, Cladosporium herbarum, Aspergillus fumigatus, Candida albicans, Alternaria alternata, Setomelanomma rostrata</i>	mx2	16	14-4320-01	FDA Cleared	53HX
m3, m207, m36, m228 <i>A. fumigatus, A. niger, A. terreus, A. flavus</i>	mx4	10	14-4921-01	PIRL	

ASR (Analyte Specific Reagent). Analytical and performance characteristics are not established. Requires CLIA High Complexity.

Available through Phadia Immunology Reference Laboratory and outside the US. Contact Customer Service, 800-346-4364, for turnaround times.

Epidermals and animal proteins					
Product	Code	Size	Art. No.	Status	Category Code
Budgerigar droppings	e77	10	14-4303-01	FDA Cleared	53FX
Budgerigar feathers	e78	10	14-4304-01	FDA Cleared	53FX
Canary bird droppings	e200	10	14-4913-01	PIRL	
Canary bird feathers	e201	10	14-4824-01	FDA Cleared	53FX
Cat dander	e1	16	14-4109-01	FDA Cleared	53GX
Chicken droppings	Re218	10	14-5229-10	ASR	56XX
Chicken feathers	e85	10	14-4170-01	FDA Cleared	53FX
Chicken, serum proteins	Re219	10	14-5230-10	ASR	56XX
Chinchilla epithelium	e208	10	14-5011-01	PIRL	
Cow dander	e4	16	14-4166-01	FDA Cleared	53GE
Deer epithelium	Re216	10	14-5156-10	ASR	56XX
Dog dander	e5	16	14-4110-01	FDA Cleared	53GX
Duck feathers	e86	10	14-4171-01	FDA Cleared	53FX
Ferret epithelium	Re217	10	14-5157-10	ASR	56XX
Finch feathers	Re214	10	14-5013-10	ASR	56XX
Fox epithelium	e210	10	14-5014-01	PIRL	
Gerbil epithelium	Re209	10	14-5015-10	ASR	56XX
Goat epithelium	e80	10	14-4306-01	FDA Cleared	53FX
Goose feathers	e70	16	14-4169-01	FDA Cleared	53GE
Guinea pig epithelium	e6	16	14-4167-01	FDA Cleared	53GE
Hamster epithelium	e84	10	14-4310-01	FDA Cleared	53FX
Horse dander	e3	16	14-4122-01	FDA Cleared	53GE
Horse, serum proteins	Re205	10	14-5016-10	ASR	56XX
Mink epithelium	e203	10	14-5030-01	PIRL	
Mouse epithelium	e71	10	14-4394-01	FDA Cleared	53FX
Mouse epithelium, serum proteins and urine proteins	e88	10	14-4327-01	FDA Cleared	53FX
Mouse serum proteins	e76	10	14-4399-01	FDA Cleared	53FX
Mouse urine proteins	e72	10	14-4395-01	FDA Cleared	53FX
Parakeet feathers	e196	10	14-4909-01	PIRL	
Parakeet serum	e198	10	14-4911-01	PIRL	
Pigeon droppings	e7	16	14-4168-01	FDA Cleared	53GE
Pigeon feathers	Re215	10	14-5032-10	ASR	56XX
Rabbit epithelium	e82	10	14-4308-01	FDA Cleared	53FX
Rabbit, serum proteins	Re206	10	14-5033-10	ASR	56XX
Rabbit, urine proteins	Re211	10	14-5034-10	ASR	56XX
Rat epithelium	e73	10	14-4396-01	FDA Cleared	53FX
Rat epithelium, serum proteins and urine proteins	e87	10	14-4326-01	FDA Cleared	53FX
Rat serum proteins	e75	10	14-4398-01	FDA Cleared	53FX
Rat urine proteins	e74	10	14-4397-01	FDA Cleared	53FX
Reindeer epithelium	e202	10	14-5035-01	PIRL	
Sheep epithelium	e81	10	14-4307-01	FDA Cleared	53FX
Swine epithelium	e83	10	14-4309-01	FDA Cleared	53FX
Turkey feathers	e89	10	14-4356-01	FDA Cleared	53FX
Allergen Components					
nBos d 6 BSA, Cow	Re204	10	14-5009-10	ASR	57XX
rCan f 1 Dog	e101	10	14-4955-01	FDA Cleared	57XX
rCan f 2 Dog	e102	10	14-4956-01	FDA Cleared	57XX
nCan f 3 Dog serum albumin	e221	10	14-5241-01	FDA Cleared	57XX
rCan f 5 Dog	e226	10	14-4998-01	FDA Cleared	57XX
rFel d 1 Cat	e94	10	14-4905-01	FDA Cleared	57XX
nFel d 2 Cat serum albumin	e220	10	14-5240-01	FDA Cleared	57XX
rFel d 4 Cat	e228	10	14-5702-01	FDA Cleared	57XX
rEqu c 1 Horse	e227	10	14-5700-01	FDA Cleared	57XX
nSus s Pig serum albumin, Swine	e222	10	14-5242-01	PIRL	
Mixes					
e1, e3, e4, e5 Cat dander, Horse dander, Cow dander, Dog dander	ex1	16	14-4203-01	FDA Cleared	53HX
e1, e5, e6, e87, e88 Cat dander, Dog dander, Guinea pig epithelium, Rat, Mouse	ex2	16	14-4512-01	FDA Cleared	53HX
e6, e82, e84, e87, e88 Guinea pig epithelium, Rabbit epithelium, Hamster epithelium, Rat, Mouse	ex70	10	14-4276-01	FDA Cleared	53FX
e70, e85, e86, e89 Goose feathers, Chicken feathers, Duck feathers, Turkey feathers	ex71	10	14-4277-01	FDA Cleared	53FX
Allergens for research use only					
Swine, urine proteins	Re212	10	14-5035-10	PIRL	

ASR (Analyte Specific Reagent). Analytical and performance characteristics are not established. Requires CLIA High Complexity.

Available through Phadia Immunology Reference Laboratory and outside the US. Contact Customer Service, 800-346-4364, for turnaround times.

Mites

Product		Code	Size	Art. No.	Status	Category Code
<i>Acarus siro</i>	Storage mite	d70	10	14-4300-01	FDA Cleared	53FX
<i>Blomia tropicalis</i>	House dust mite	d201	10	14-4896-01	FDA Cleared	53FX
<i>Dermatophagoides farinae</i>	House dust mite	d2	16	14-4108-01	FDA Cleared	53GX
<i>Dermatophagoides microceras</i>	House dust mite	d3	16	14-4241-01	FDA Cleared	53GE
<i>Dermatophagoides pteronyssinus</i>	House dust mite	d1	16	14-4107-01	FDA Cleared	53GX
<i>Euroglyphus maynei</i>	House dust mite	d74	10	14-4342-01	FDA Cleared	53FX
<i>Glycyphagus domesticus</i>	Storage mite	d73	10	14-4393-01	FDA Cleared	53FX
<i>Lepidoglyphus destructor</i>	Storage mite	d71	10	14-4301-01	FDA Cleared	53FX
<i>Tyrophagus putrescentiae</i>	Storage mite	d72	10	14-4302-01	FDA Cleared	53FX
Allergen Components						
nDer p 1 House dust mite	<i>Dermatophagoides Pteronyssinus</i>	d202	10	14-4966-01	FDA Cleared	57XX
nDer p 1 House dust mite	<i>Dermatophagoides Pteronyssinus</i>	d202	10	14-5996-01	Pending FDA	57XX
rDer p 2 House dust mite	<i>Dermatophagoides Pteronyssinus</i>	d203	10	14-4967-01	FDA Cleared	57XX
rDer p 10 Tropomyosin, House dust mite	<i>Dermatophagoides Pteronyssinus</i>	d205	10	14-4985-01	FDA Cleared	57XX

House dust

Product		Code	Size	Art. No.	Status	Category Code
Greer Labs., Inc.		h1	16	14-4116-01	FDA Cleared	53GE
Hollister-Stier Labs		h2	16	14-4140-01	FDA Cleared	53GX
Mixes						
h2, d1, d2, i6		hx2	16	14-4205-01	FDA Cleared	53HX
Hollister-Stier Labs., <i>Dermatophagoides pteronyssinus</i> , <i>Dermatophagoides farinae</i> , <i>Blatella germanica</i>						

Insects

Product		Code	Size	Art. No.	Status	Category Code
Berlin beetle	<i>Trogoderma angustum (Solier)</i>	i76	10	14-4362-01	FDA Cleared	53FX
Blood worm	<i>Chironomus thummi (C. riparius)</i>	i73	10	14-4328-01	FDA Cleared	53FX
Cockroach, American	<i>Periplaneta americana</i>	Ri206	10	14-5274-10	ASR	56XX
Cockroach, German	<i>Blatella germanica</i>	i6	16	14-4224-01	FDA Cleared	53GX
Cockroach, Oriental	<i>Blatta orientalis</i>	Ri207	10	14-5275-10	ASR	56XX
Fire ant	<i>Solenopsis invicta</i>	i70	10	14-4343-01	FDA Cleared	53FX
Grain weevil	<i>Sitophilus granarius</i>	Ri202	10	14-5150-10	ASR	56XX
Green nimitti	<i>Cladotanytarsus Lewisii</i>	i72	10	14-4361-01	FDA Cleared	53FX
Horse fly	<i>Tabanus spp.</i>	Ri204	10	14-5207-10	ASR	56XX
Mediterranean flour moth	<i>Ephestia (syn. Anagasta) kuehniella</i>	i203	10	14-5151-01	PIRL	
Mosquito	<i>Aedes communis</i>	i71	10	14-4316-01	FDA Cleared	53FX
Moth	<i>Bombyx mori</i>	i8	16	14-4474-01	FDA Cleared	53GE

Venoms

Product		Code	Size	Art. No.	Status	Category Code
Bumblebee	<i>Bombus terrestris</i>	Ri205	10	14-5270-10	ASR	56XX
Common wasp (Yellow jacket)	<i>Vespula spp.</i>	i3	16	14-4525-01	FDA Cleared	53DY
European Paper Wasp	<i>Polistes dominulus</i>	i77	10	14-4527-01	PIRL	
European hornet	<i>Vespa crabro</i>	i75	10	14-4340-01	FDA Cleared	53DX
Honey bee	<i>Apis mellifera</i>	i1	16	14-4143-01	FDA Cleared	53DY
Paper wasp	<i>Polistes spp.</i>	i4	16	14-4526-01	FDA Cleared	53DY
White-faced hornet	<i>Dolichovespula maculata</i>	i2	16	14-4221-01	FDA Cleared	53DY
Yellow hornet	<i>Dolichovespula arenaria</i>	i5	16	14-4223-01	FDA Cleared	53DY
Allergen Components						
rApi m 1 Phospholipase A2, Honey bee	<i>Apis mellifera</i>	i208	10	14-4987-01	PIRL	
rVes v 1 Phospholipase A1, Common wasp	<i>Vespula vulgaris</i>	i211	10	14-4995-01	PIRL	
rVes v 5 Common wasp	<i>Vespula vulgaris</i>	i209	10	14-4992-01	PIRL	
rPol d 5 European Paper Wasp	<i>Polistes dominulus</i>	i210	10	14-4994-01	PIRL	

ASR (Analyte Specific Reagent). Analytical and performance characteristics are not established. Requires CLIA High Complexity.

Available through Phadia Immunology Reference Laboratory and outside the US. Contact Customer Service, 800-346-4364, for turnaround times.

Drugs

Product	Code	Size	Art. No.	Status	Category Code
Amoxicilloyl	c6	16	14-4451-01	FDA Cleared	53EY
Ampicilloyl	c5	16	14-4450-01	FDA Cleared	53EY
Cefaclor	c7	10	14-5336-10	ASR	56XX
Chlorhexidine	c8	10	14-4926-01	PIRL	
Chymopapain	Rc209	10	14-5259-10	ASR	56XX
Gelatin bovine	c74	10	14-4854-01	FDA Cleared	53EX
Insulin bovine	c71	10	14-4392-10	ASR	53EX
Insulin human	c73	10	14-4347-01	FDA Cleared	53EX
Insulin porcine	c70	10	14-4391-10	ASR	53EX
Penicilloyl G	c1	16	14-4164-01	FDA Cleared	53EY
Penicilloyl V	c2	16	14-4165-01	FDA Cleared	53EY
Pholcodine	c261	10	14-4975-01	PIRL	
Morphine	c260	10	14-4974-01	PIRL	
Suxamethonium (succinylcholine)	Rc202	10	14-5266-10	ASR	56XX
Allergens for research use only					
ACTH (Adrenocorticotrophic hormone)	Rc206	10	14-5162-10	ASR	56XX
Tetanus toxoid	Rc208	10	14-5227-10	ASR	56XX

Occupational

Product	Code	Size	Art. No.	Status	Category Code
Abachi wood dust	<i>Triplochiton scleroxylon</i>	k212	10	14-5217-01	PIRL
Bougainvillea	<i>Bougainvillea spp.</i>	k214	10	14-5286-01	PIRL
Castor bean		k71	10	14-4364-01	FDA Cleared 53FX
Chloramin T		k85	10	14-4368-01	PIRL
Cotton seed		k83	10	14-4366-10	ASR 53FX
Ethylene oxide		k78	10	14-4314-01	FDA Cleared 53FX
Ficus	<i>Ficus spp.</i>	k81	10	14-4365-01	FDA Cleared 53FX
Formaldehyde/Formalin		k80	10	14-4341-10	ASR 53FX
Green coffee bean	<i>Coffea spp.</i>	k70	10	14-4363-01	FDA Cleared 53FX
Hexahydrophthalic anhydrid		Rk209	10	14-5189-10	ASR 56XX
Isocyanate HDI (Hexamethylene diisocyanate)		k77	10	14-4313-01	FDA Cleared 53FX
Isocyanate MDI (Diphenylmethane diisocyanate)		k76	10	14-4312-01	FDA Cleared 53FX
Isocyanate TDI (Toluene diisocyanate)		k75	10	14-4311-01	FDA Cleared 53FX
Ispaghula		k72	10	14-4348-01	FDA Cleared 53FX
Latex	<i>Hevea brasiliensis</i>	k82	10	14-4511-01	FDA Cleared 53FR
Methyltetrahydrophthalic anhydrid		k211	10	14-5191-01	PIRL
Phthalic anhydride		k79	10	14-4315-01	FDA Cleared 53FX
Silk	<i>Bombyx mori</i>	k74	10	14-4333-01	FDA Cleared 53FX
Silk waste		k73	10	14-4400-01	FDA Cleared 53FX
Sunflower seed		k84	10	14-4367-01	FDA Cleared 53FX
Trimellitic anhydride, TMA		k86	10	14-4369-10	ASR 53FX
Allergen Components					
Alkalase	<i>Bacillus spp.</i>	k205	10	14-5126-01	PIRL
nAna c 2 Bromelain, Pineapple		k202	10	14-5127-01	PIRL
nAsp o 21 alpha-amylase	<i>Aspergillus oryzae</i>	k87	10	14-4370-01	FDA Cleared 53FC
nCar p 1 Papain, Papaya		Rk201	10	14-5130-10	ASR 57XX
nGal d 4 Lysozyme, Egg		Rk208	10	14-5128-10	ASR 57XX
rHev b 1 Latex	<i>Hevea brasiliensis</i>	k215	10	14-5324-01	PIRL
rHev b 3 Latex	<i>Hevea brasiliensis</i>	k217	10	14-5326-01	PIRL
rHev b 5 Latex	<i>Hevea brasiliensis</i>	k218	10	14-5327-01	PIRL
rHev b 6.01 Latex	<i>Hevea brasiliensis</i>	k219	10	14-5328-01	PIRL
rHev b 6.02 Latex	<i>Hevea brasiliensis</i>	k220	10	14-5329-01	PIRL
rHev b 8 Profilin, Latex	<i>Hevea brasiliensis</i>	k221	10	14-5330-01	PIRL
rHev b 9 Latex	<i>Hevea brasiliensis</i>	k222	10	14-5331-01	PIRL
rHev b 11 Latex	<i>Hevea brasiliensis</i>	k224	10	14-5333-01	PIRL
Maxatase	<i>Bacillus licheniformis</i>	k204	10	14-5129-01	PIRL
Savinase	<i>Bacillus spp.</i>	k206	10	14-5132-01	PIRL
nSus s Pepsin, Swine		k213	10	14-5258-01	PIRL

ASR (Analyte Specific Reagent). Analytical and performance characteristics are not established. Requires CLIA High Complexity.

Available through Phadia Immunology Reference Laboratory and outside the US. Contact Customer Service, 800-346-4364, for turnaround times.

Occupational, con't

Product	Code	Size	Art. No.	Status	Category Code
Mixes					
e3, e4, e70, e85 Horse dander, Cow dander, Goose feathers, Chicken feathers	pax1	10	14-4350-01	FDA Cleared	53FS
m3, m6, g12, g15 <i>Aspergillus fumigatus</i> , <i>Alternaria alternata</i> , Rye pollen, Wheat pollen	pax3	10	14-4352-01	FDA Cleared	53FS
f4, f14, k87, i202 Wheat, Soya bean, alpha-amylase, <i>Sitophilus granarius</i>	pax4	10	14-4353-01	PIRL	
k75, k76, k77, k79 Isocyanates (TDI, MDI, HDI), Phthalic anhydride	pax5	10	14-4354-01	FDA Cleared	53FS
k78, k79, k80, k85 Ethylene oxide, Phthalic anhydride, Formaldehyde, Chloramin T	pax6	10	14-4355-10	ASR	53FS
Allergens for research use only					
Maleic anhydrid	Rk210	10	14-5190-10	ASR	56XX

Parasites

Product	Code	Size	Art. No.	Status	Category Code
Anisakis	p4	16	14-4475-01	FDA Cleared	53GE
Ascaris	p1	16	14-4244-01	FDA Cleared	53GE

Miscellaneous

Product	Code	Size	Art. No.	Status	Category Code
Artemia salina, fish feed	o202	10	14-5122-01	PIRL	
Cotton, crude fibers	o1	16	14-4476-01	FDA Cleared	53GE
Daphnia, fish feed	o207	10	14-5124-01	PIRL	
Mealworm <i>Tenebrio molitor</i>	o211	10	14-5251-01	PIRL	
MUXF3 CCD, Bromelain	Ro214	10	14-5339-10	ASR	59XX
Seminal fluid	o70	10	14-4371-10	ASR	53FX
Streptavidin	Ro212	10	14-5320-10	ASR	60XX
Tetramin, fish feed	o203	10	14-5135-01	PIRL	
Tobacco leaf	Ro201	10	14-5136-10	ASR	56XX
Allergens for research use only					
MBP (maltose binding protein)	Ro213	10	14-5334-01	PIRL	
Gal-alpha-1,3-Gal Thyroglobulin, bovine	Ro215	10	14-5997-01	PIRL	

Other mixes – Regional

Product	Code	Size	Art. No.	Status	Category Code
g6, w6, w9, w21, t3 <i>Phleum pratense</i> , <i>Artemisia vulgaris</i> , <i>Plantago lanceolata</i> , <i>Parietaria judaica</i> , <i>Betula verrucosa</i>	Rrx1	10	14-5193-10	ASR	53FS
d2, e1, e3, e5, m6 <i>Dermatophagoides farinae</i> , Cat dander, Horse dander, Dog dander, <i>Alternaria alternata</i>	Rrx2	10	14-5184-10	ASR	53FS
g2, g5, g17, w1, w9, w10 Cynodon dactylon, Lolium perenne, Paspalum notatum, Ambrosia elatior, Plantago lanceolata, Chenopodium album	Rrx3	10	14-5198-10	ASR	53FS
g2, g5, g11, w1, w6, w9 Cynodon dactylon, Lolium perenne, Bromus inermis, Ambrosia elatior, <i>Artemisia vulgaris</i> , <i>Plantago lanceolata</i>	Rrx4	10	14-5199-10	ASR	53FS
d1, e1, m3, i6 <i>Dermatophagoides pteronyssinus</i> , Cat dander, <i>Aspergillus fumigatus</i> , <i>Blatella germanica</i>	rx5	10	14-5246-01	PIRL	
3, g6, w6, m2, m6 <i>Betula verrucosa</i> , <i>Phleum pratense</i> , <i>Artemisia vulgaris</i> , <i>Cladosporium herbarum</i> , <i>Alternaria alternata</i>	rx6	10	14-5322-01	PIRL	
d1, e1, e3, e5, e82 <i>Dermatophagoides pteronyssinus</i> , Cat dander, Horse dander, Dog dander, Rabbit epithelium	rx7	10	14-5323-01	PIRL	

ASR (Analyte Specific Reagent). Analytical and performance characteristics are not established. Requires CLIA High Complexity.

Available through Phadia Immunology Reference Laboratory and outside the US. Contact Customer Service, 800-346-4364, for turnaround times.

Foods – Fruits & vegetables						
Product		Code	Size	Art. No.	Status	Category Code
Apple	<i>Malus x domestica</i>	f49	16	14-4220-01	FDA Cleared	53GE
Apricot	<i>Prunus armeniaca</i>	f237	10	14-4812-01	FDA Cleared	53FX
Asparagus	<i>Asparagus officinalis</i>	Rf261	10	14-5046-10	ASR	56XX
Aubergine, eggplant	<i>Solanum melongena</i>	Rf262	10	14-5047-10	ASR	56XX
Avocado	<i>Persea americana</i>	f96	10	14-4346-01	FDA Cleared	53FX
Bamboo shoot	<i>Phyllostachys pubescens</i>	f51	16	14-4455-01	FDA Cleared	53GE
Banana	<i>Musa spp.</i>	f92	10	14-4334-01	FDA Cleared	53FX
Beetroot	<i>Beta vulgaris</i>	Rf319	10	14-5216-10	ASR	56XX
Blackberry	<i>Rubus fruticosus</i>	Rf211	10	14-5051-10	ASR	56XX
Blueberry	<i>Vaccinium myrtillus</i>	Rf288	10	14-5052-10	ASR	56XX
Broccoli	<i>Brassica oleracea var. italica</i>	f260	10	14-4841-01	FDA Cleared	53FX
Brussel sprouts	<i>Brassica oleracea var. gemmifera</i>	Rf217	10	14-5054-10	ASR	56XX
Cabbage	<i>Brassica oleracea var. capitata</i>	f216	10	14-4814-01	FDA Cleared	53FX
Carambola	<i>Averrhoa carambola</i>	f295	10	14-5056-01	PIRL	
Carrot	<i>Daucus carota</i>	f31	16	14-4210-01	FDA Cleared	53GE
Cauliflower	<i>Brassica oleracea var. botrytis</i>	Rf291	10	14-5060-10	ASR	56XX
Celery	<i>Apium graveolens</i>	f85	10	14-4296-01	FDA Cleared	53FX
Cherry	<i>Prunus avium</i>	f242	10	14-4811-01	FDA Cleared	53FX
Cucumber	<i>Cucumis sativus</i>	f244	10	14-4839-01	FDA Cleared	53FX
Date	<i>Phoenix dactylifera</i>	Rf289	10	14-5068-10	ASR	56XX
Fennel, fresh	<i>Foeniculum vulgare</i>	f276	10	14-5071-01	PIRL	
Fig	<i>Ficus carica</i>	Rf328	10	14-5244-10	ASR	56XX
Garlic	<i>Allium sativum</i>	f47	16	14-4218-01	FDA Cleared	53GE
Grape	<i>Vitis vinifera</i>	f259	10	14-4809-01	FDA Cleared	53FX
Grapefruit	<i>Citrus paradisi</i>	f209	16	14-4431-01	FDA Cleared	53FE
Guava	<i>Psidium guajava</i>	Rf292	10	14-5077-10	ASR	56XX
Jack fruit	<i>Artocarpus heterophyllus</i>	Rf318	10	14-5215-10	ASR	56XX
Jujube	<i>Ziziphus jujuba</i>	f336	10	14-5255-01	PIRL	
Kiwi	<i>Actinidia deliciosa</i>	f84	10	14-4295-01	FDA Cleared	53FX
Lemon	<i>Citrus limon</i>	f208	10	14-4829-01	FDA Cleared	53FX
Lettuce	<i>Lactuca sativa</i>	f215	10	14-4813-01	FDA Cleared	53FX
Lime	<i>Citrus aurantifolia</i>	Rf306	10	14-5188-10	ASR	56XX
Litchi	<i>Litchi chinensis</i>	f348	10	14-5285-01	PIRL	
Mango	<i>Mangifera indica</i>	f91	10	14-4331-01	FDA Cleared	53FX
Mandarin	<i>Citrus reticulata</i>	Rf302	10	14-5160-10	ASR	56XX
Melon	<i>Cucumis melo spp.</i>	f87	10	14-4298-01	FDA Cleared	53FX
Olive (black, fresh)	<i>Olea europaea</i>	Rf342	10	14-5279-10	ASR	56XX
Onion	<i>Allium cepa</i>	f48	16	14-4219-01	FDA Cleared	53GE
Orange	<i>Citrus sinensis</i>	f33	16	14-4129-01	FDA Cleared	53GX
Papaya	<i>Carica papaya</i>	Rf293	10	14-5089-10	ASR	56XX
Passion fruit	<i>Passiflora edulis</i>	Ff294	10	14-5091-10	ASR	56XX
Peach	<i>Prunus persica</i>	f95	10	14-4337-01	FDA Cleared	53FX
Pear	<i>Pyrus communis</i>	f94	10	14-4336-01	FDA Cleared	53FX
Persimon (kaki fruit, sharon)	<i>Diospyros kaki</i>	Rf301	10	14-5161-10	ASR	56XX
Pineapple	<i>Ananas comosus</i>	f210	10	14-4810-01	FDA Cleared	53FX
Plum	<i>Prunus domestica</i>	f255	10	14-4840-01	FDA Cleared	53FX
Potato	<i>Solanum tuberosum</i>	f35	16	14-4211-01	FDA Cleared	53GE
Pumpkin	<i>Cucurbita pepo</i>	f225	16	14-4433-01	FDA Cleared	53FX
Raspberry	<i>Rubus idaeus</i>	Rf343	10	14-5280-10	ASR	56XX
Red currant	<i>Ribes sylvestri</i>	Rf322	10	14-5221-10	ASR	56XX
Rose hip	<i>Rosa spp.</i>	f330	10	14-5247-01	PIRL	
Spinach	<i>Spinachia oleracea</i>	f214	16	14-4432-01	FDA Cleared	53FE
Strawberry	<i>Fragaria vesca</i>	f44	16	14-4216-01	FDA Cleared	53GE
Sweet potato	<i>Ipomea batatas</i>	f54	16	14-4458-01	FDA Cleared	53GE
Tomato	<i>Lycopersicon lycopersicum</i>	f25	16	14-4182-01	FDA Cleared	53GX
Watermelon	<i>Citrullus lanatus</i>	Rf329	10	14-5245-10	ASR	56XX
Allergen Components						
rAct d 8 PR-10, Kiwi	<i>Actinidia deliciosa</i>	f430	10	14-4984-01	PIRL	
rApi g 1.01 PR-10, Celery	<i>Apium graveolens</i>	f417	10	14-4957-01	PIRL	
rMal d 1 PR-10, Apple	<i>Malus domestica</i>	f434	10	14-5703-01	PIRL	
rMal d 3 LTP, Apple	<i>Malus domestica</i>	f435	10	14-5704-01	PIRL	
rPru p 1 PR-10, Peach	<i>Prunus persica</i>	f419	10	14-4960-01	FDA Cleared	57XX
rPru p 3 LTP, Peach	<i>Prunus persica</i>	f420	10	14-4961-01	FDA Cleared	57XX
rPru p 4 Profilin, Peach	<i>Prunus persica</i>	f421	10	14-4962-01	FDA Cleared	57XX
Allergens for research use only						
Cranberry	<i>Vaccinium oxycoccus</i>	Rf341	10	14-5269-10	ASR	56XX

ASR (Analyte Specific Reagent). Analytical and performance characteristics are not established. Requires CLIA High Complexity. Available through Phadia Immunology Reference Laboratory and outside the US. Contact Customer Service, 800-346-4364, for turnaround times.

Foods – Seed, legumes & nuts

Product		Code	Size	Art. No.	Status	Category Code
Almond	<i>Amygdalus communis</i>	f20	16	14-4179-01	FDA Cleared	53GX
Barley	<i>Hordeum vulgare</i>	f6	16	14-4172-01	FDA Cleared	53GE
Blue vetch	<i>Lathyrus sativus</i>	f310	10	14-5197-01	PIRL	
Brazil nut	<i>Bertholletia excelsa</i>	f18	16	14-4178-01	FDA Cleared	53GE
Buckwheat	<i>Fagopyrum esculentum</i>	f11	16	14-4125-01	FDA Cleared	53GE
Cashew nut	<i>Anacardium occidentale</i>	f202	10	14-4835-01	FDA Cleared	53FR
Chick pea	<i>Cicer arietinus</i>	f309	10	14-5196-01	FDA Cleared	56XX
Coconut	<i>Cocos nucifera</i>	f36	16	14-4212-01	FDA Cleared	53GE
Common millet	<i>Panicum milliaceum</i>	f55	16	14-4459-01	FDA Cleared	53GE
Fenugreek	<i>Trigonella foenum-graecum</i>	Rf305	10	14-5187-10	ASR	56XX
Foxtail millet	<i>Setaria italica</i>	f56	16	14-4460-01	FDA Cleared	53GE
Gluten		f79	10	14-4291-01	FDA Cleared	53FX
Green bean	<i>Phaseolus vulgaris</i>	Rf315	10	14-5211-10	ASR	56XX
Hazel nut	<i>Corylus avellana</i>	f17	16	14-4528-01	FDA Cleared	53GX
Japanese millet	<i>Echinochloa crus-galli</i>	f57	16	14-4461-01	FDA Cleared	53GE
Lentil	<i>Lens esculenta</i>	f235	10	14-4815-01	FDA Cleared	53FX
Lima bean	<i>Phaseolus lunatus</i>	Rf182	10	14-4929-10	ASR	56XX
Linseed	<i>Linum usitatissimum</i>	Rf333	10	14-5250-10	ASR	56XX
Lupin seed	<i>Lupinus albus</i>	Rf335	10	14-5254-10	ASR	56XX
Macadamia nut	<i>Macadamia spp.</i>	Rf345	10	14-5282-10	ASR	56XX
Maize, Corn	<i>Zea mays</i>	f8	16	14-4124-01	FDA Cleared	53GX
Oat	<i>Avena sativa</i>	f7	16	14-4173-01	FDA Cleared	53GX
Pea	<i>Pisum sativum</i>	f12	16	14-4176-01	FDA Cleared	53GE
Peanut	<i>Arachis hypogaea</i>	f13	16	14-4126-01	FDA Cleared	53GX
Pecan nut	<i>Carya illinoensis</i>	f201	10	14-4807-01	FDA Cleared	53FR
Pine nut, pignoles	<i>Pinus edulis</i>	Rf253	10	14-5093-10	ASR	56XX
Pistachio	<i>Pistacia vera</i>	f203	10	14-4836-01	FDA Cleared	53FR
Poppy seed	<i>Papaver somniferum</i>	Rf224	10	14-5097-10	ASR	56XX
Pumpkin seed	<i>Cucurbita pepo</i>	Rf226	10	14-5098-10	ASR	56XX
Quinoa	<i>Chenopodium quinoa</i>	Rf347	10	14-5284-10	ASR	56XX
Rape seed	<i>Brassica napus</i>	Rf316	10	14-5213-10	ASR	56XX
Red kidney bean	<i>Phaseolus vulgaris</i>	Rf287	10	14-5100-10	ASR	56XX
Rice	<i>Oryza sativa</i>	f9	16	14-4174-01	FDA Cleared	53GE
Rye	<i>Secale cereale</i>	f5	16	14-4123-01	FDA Cleared	53GE
Sesame seed	<i>Sesamum indicum</i>	f10	16	14-4175-01	FDA Cleared	53GE
Soybean	<i>Glycine max</i>	f14	16	14-4115-01	FDA Cleared	53GX
Spelt wheat	<i>Triticum spelta</i>	f124	10	14-4914-01	PIRL	
Sugar-beet seed	<i>Beta vulgaris</i>	Rf227	10	14-5102-10	ASR	56XX
Sweet chestnut	<i>Castanea sativa</i>	f299	10	14-4843-01	FDA Cleared	53FX
Walnut	<i>Juglans spp.</i>	f256	16	14-4521-01	FDA Cleared	53FR
Wheat	<i>Triticum aestivum</i>	f4	16	14-4113-01	FDA Cleared	53GX
White bean	<i>Phaseolus vulgaris</i>	f15	16	14-4177-01	FDA Cleared	53GE
Allergen Components						
rAra h 1 Peanut	<i>Arachis hypogaea</i>	f422	10	14-4963-01	FDA Cleared	53PC
rAra h 2 Peanut	<i>Arachis hypogaea</i>	f423	10	14-4964-01	FDA Cleared	53PC
rAra h 3 Peanut	<i>Arachis hypogaea</i>	f424	10	14-4965-01	FDA Cleared	53PC
rAra h 8 PR-10, Peanut	<i>Arachis hypogaea</i>	f352	10	14-5341-01	FDA Cleared	53PC
rAra h 9 LTP, Peanut	<i>Arachis hypogaea</i>	f427	10	14-4980-01	FDA Cleared	53PC
rAna o 3, Cashew nut	<i>Anacardium occidentale</i>	f443	10	14-5760-01	PIRL	
rBer e 1 Brazil nut	<i>Bertholletia excelsa</i>	f354	10	14-5343-01	FDA Cleared	57XX
rCor a 1 PR-10, Hazel nut	<i>Corylus avellana</i>	f428	10	14-4981-01	FDA Cleared	57XX
rCor a 8 LTP, Hazel nut	<i>Corylus avellana</i>	f425	10	14-4968-01	FDA Cleared	57XX
nCor a 9, Hazel nut	<i>Corylus avellana</i>	f440	10	14-5758-01	PIRL	
rCor a 14, Hazel nut	<i>Corylus avellana</i>	f439	10	14-5754-01	PIRL	
rGly m 4 PR-10, Soy	<i>Glycine max</i>	f353	10	14-5340-01	FDA Cleared	57XX
nGly m 5 beta-conglycinin, Soy	<i>Glycine max</i>	f431	10	14-4990-01	FDA Cleared	57XX
nGly m 6 Glycinin	<i>Glycine max</i>	f432	10	14-4991-01	FDA Cleared	57XX
rJug r 1, Walnut	<i>Juglans spp.</i>	f441	10	14-5762-01	PIRL	
rJug r 3 LTP, Walnut	<i>Juglans spp.</i>	f442	10	14-5954-01	PIRL	
rTri a 14 LTP, Wheat	<i>Triticum aestivum</i>	f433	10	14-5701-01	PIRL	
Gliadin		f98	10	14-5752-01	PIRL	
rTri a 19 Omega-5 Gliadin, Wheat	<i>Triticum spp.</i>	f416	10	14-4954-01	PIRL	

ASR (Analyte Specific Reagent). Analytical and performance characteristics are not established. Requires CLIA High Complexity.

Available through Phadia Immunology Reference Laboratory and outside the US. Contact Customer Service, 800-346-4364, for turnaround times.

Foods – Spices

Product		Code	Size	Art. No.	Status	Category Code
Allspice	<i>Pimenta dioica</i>	Rf339	10	14-5267-10	ASR	56XX
Anise	<i>Pimpinella anisum</i>	Rf271	10	14-5044-10	ASR	56XX
Basil	<i>Ocimum basilicum</i>	Rf269	10	14-5048-10	ASR	56XX
Bay leaf	<i>Laurus nobilis</i>	Rf278	10	14-5049-10	ASR	56XX
Black pepper	<i>Piper nigrum</i>	f280	10	14-4817-01	FDA Cleared	53FX
Caraway	<i>Carum carvi</i>	Rf265	10	14-5057-10	ASR	56XX
Cardamon	<i>Elettaria cardamomum</i>	Rf267	10	14-5058-10	ASR	56XX
Chilipepper	<i>Capsicum frutescens</i>	Rf279	10	14-5062-10	ASR	56XX
Clove	<i>Syzygium aromaticum</i>	Rf268	10	14-5064-10	ASR	56XX
Coriander	<i>Coriandrum sativum</i>	Rf317	10	14-5214-10	ASR	56XX
Curry (Santa Maria)		Rf281	10	14-5067-10	ASR	56XX
Dill	<i>Anethum graveolens</i>	Rf277	10	14-5069-10	ASR	56XX
Fennel seed	<i>Foeniculum vulgare</i>	Rf219	10	14-5070-10	ASR	56XX
Ginger	<i>Zingiber officinale</i>	Rf270	10	14-5072-10	ASR	56XX
Green pepper (unripe seed)	<i>Piper nigrum</i>	Rf263	10	14-5075-10	ASR	56XX
Lovage	<i>Levisticum officinale</i>	f275	10	14-5082-01	PIRL	
Mace	<i>Myristica fragrans</i>	Rf266	10	14-5083-10	ASR	56XX
Marjoram	<i>Origanum majorana</i>	Rf274	10	14-5084-10	ASR	56XX
Mint	<i>Mentha piperita</i>	Rf332	10	14-5249-10	ASR	56XX
Mustard	<i>Brassica/Sinapis spp.</i>	f89	10	14-4329-01	FDA Cleared	53FX
Oregano	<i>Origanum vulgare</i>	Rf283	10	14-5088-10	ASR	56XX
Paprika, Sweet pepper	<i>Capsicum annuum</i>	f218	10	14-4816-01	FDA Cleared	53FX
Parsley	<i>Petroselinum crispum</i>	f86	10	14-4297-01	FDA Cleared	53FX
Saffron	<i>Crocus sativus</i>	Rf331	10	14-5248-10	ASR	56XX
Sage	<i>Salvia officinalis</i>	Rf344	10	14-5281-10	ASR	56XX
Tarragon	<i>Artemisia dracunculus</i>	Rf272	10	14-5103-10	ASR	56XX
Thyme	<i>Thymus vulgaris</i>	Rf273	10	14-5105-10	ASR	56XX
Vanilla	<i>Vanilla planifolia</i>	Rf234	10	14-5106-10	ASR	56XX
Allergens for research use only						
Cinnamon	<i>Cinnamomum spp.</i>	Rf220	10	14-5063-10	ASR	56XX
Nutmeg	<i>Myristica fragrans</i>	Rf282	10	14-5087-10	ASR	56XX

Foods – Fish, shellfish & mollusks

Product		Code	Size	Art. No.	Status	Category Code
Abalone	<i>Haliotis spp.</i>	Rf346	10	14-5283-10	ASR	56XX
Anchovy	<i>Engraulis encrasicolus</i>	Rf313	10	14-5209-10	ASR	56XX
Blue mussel	<i>Mytilus edulis</i>	f37	16	14-4213-01	FDA Cleared	53GE
Cat fish	<i>Ictalurus punctatus</i>	Rf369	10	14-4930-10	ASR	56XX
Chub mackerel	<i>Scomber japonicus</i>	f50	16	14-4454-01	FDA Cleared	53GE
Clam	<i>Ruditapes spp.</i>	f207	10	14-4820-01	FDA Cleared	53FR
Crab	<i>Cancer pagurus</i>	f23	16	14-4180-01	FDA Cleared	53GX
Crayfish	<i>Astacus astacus</i>	Rf320	10	14-5219-10	ASR	56XX
Fish (cod)	<i>Gadus morhua</i>	f3	16	14-4159-01	FDA Cleared	53GX
Grouper	<i>Epinephelus spp.</i>	Rf410	10	14-4933-10	ASR	56XX
Gulf flounder	<i>Paralichthys albigutta</i>	Rf147	10	14-4928-10	ASR	56XX
Haddock	<i>Melanogrammus aeglefinus</i>	Rf42	10	14-4939-10	ASR	56XX
Hake	<i>Merluccius merluccius</i>	Rf307	10	14-5194-10	ASR	56XX
Halibut	<i>Hippoglossus hippoglossus</i>	Rf303	10	14-5158-10	ASR	56XX
Herring	<i>Clupea harengus</i>	f205	10	14-4837-01	FDA Cleared	53FX
Jack mackerel, Scad	<i>Trachurus japonicus</i>	f60	16	14-4464-01	FDA Cleared	53GE
Langust (spiny lobster)	<i>Palinurus spp.</i>	Rf304	10	14-5159-10	ASR	56XX
Lobster	<i>Homarus gammarus</i>	f80	10	14-4292-01	FDA Cleared	53FR
Mackerel	<i>Scomber scombrus</i>	Rf206	10	14-5019-10	ASR	56XX
Megrim	<i>Lepidorhombus whiffiagonis</i>	Rf311	10	14-5204-10	ASR	56XX
Octopus	<i>Octopus vulgaris</i>	f59	16	14-4463-01	FDA Cleared	53GE
Orange roughy	<i>Hoplostethus atlanticus</i>	Rf412	10	14-4935-10	ASR	56XX
Oyster	<i>Ostrea edulis</i>	f290	10	14-4842-01	FDA Cleared	53FX
Pacific squid	<i>Todarodes pacificus</i>	f58	16	14-4462-01	FDA Cleared	53GE
Plaice	<i>Pleuronectes platessa</i>	f254	16	14-4434-01	FDA Cleared	53FE
Pollock	<i>Pollachius virens</i>	Rf413	10	14-4936-10	ASR	56XX
Red snapper	<i>Lutjanus campechanus</i>	Rf381	10	14-4931-10	ASR	56XX
Salmon	<i>Salmo salar</i>	f41	16	14-4215-01	FDA Cleared	53GE
Sardine (Pilchard)	<i>Sardina pilchardus</i>	Rf308	10	14-5195-10	ASR	56XX
Sardine, Japanese Pilchard	<i>Sardinops melanosticta</i>	f61	16	14-4465-01	FDA Cleared	53GE

ASR (Analyte Specific Reagent). Analytical and performance characteristics are not established. Requires CLIA High Complexity.

Available through Phadia Immunology Reference Laboratory and outside the US. Contact Customer Service, 800-346-4364, for turnaround times.

Foods – Fish, shellfish & mollusks, con't

Product		Code	Size	Art. No.	Status	Category Code
Scallop	<i>Pecten spp.</i>	f338	10	14-4895-01	FDA Cleared	53FR
Shrimp	<i>Pandalus borealis, Penaeus monodon, Metapenaeopsis barbata, Metapenaeus joyneri</i>	f24	16	14-4181-01	FDA Cleared	53GX
Snail	<i>Helix aspersa</i>	Rf314	10	14-5210-10	ASR	56XX
Sole	<i>Solea solea</i>	Rf337	10	14-5256-10	ASR	56XX
Squid	<i>Loligo spp.</i>	Rf258	10	14-5142-10	ASR	56XX
Swordfish	<i>Xiphias gladius</i>	Rf312	10	14-5205-10	ASR	56XX
Tilapia	<i>Oreochromis spp.</i>	Rf414	10	14-4937-10	ASR	56XX
Trout	<i>Oncorhynchus mykiss (Salmo gairdneri)</i>	f204	10	14-4819-01	FDA Cleared	53FX
Tuna	<i>Thunnus albacares</i>	f40	16	14-4214-01	FDA Cleared	53GX
Walleye pike	<i>Sander vitreus (Stizostedion vitreum)</i>	Rf415	10	14-4938-10	ASR	56XX
Whitefish (Inconnu)	<i>Stenodus spp.</i>	Rf384	10	14-4932-10	ASR	56XX
Allergen Components						
rCyp c 1 Carp	<i>Cyprinus carpio</i>	f355	10	14-5344-01	PIRL	
rGad c 1 Cod	<i>Gadus morhua</i>	f426	10	14-4971-01	PIRL	
rPen a 1 Tropomyosin, Shrimp		f351	10	14-5335-01	FDA Cleared	57XX

Foods – Egg & fowl

Product		Code	Size	Art. No.	Status	Category Code
Chicken	<i>Gallus spp.</i>	f83	16	14-4185-01	FDA Cleared	53GX
Egg		f245	10	14-4826-01	FDA Cleared	53FX
Egg white		f1	16	14-4111-01	FDA Cleared	53GX
Egg yolk		f75	16	14-4184-01	FDA Cleared	53GX
Turkey meat	<i>Meleagris gallopavo</i>	f284	10	14-4818-01	FDA Cleared	53FX
Allergen Components						
nGal d 1 Ovomuroid, Egg		f233	10	14-4805-01	FDA Cleared	53FC
nGal d 2 Ovalbumin, Egg		f232	10	14-4804-01	FDA Cleared	53FC
nGal d 3 Conalbumin, Egg		f323	10	14-5222-01	PIRL	

Foods – Meat

Product		Code	Size	Art. No.	Status	Category Code
Beef	<i>Bos spp.</i>	f27	16	14-4209-01	FDA Cleared	53GE
Elk/moose meat		f285	10	14-5115-01	PIRL	
Horse meat		Rf321	10	14-5220-10	ASR	56XX
Mutton	<i>Ovis spp.</i>	f88	10	14-4299-01	FDA Cleared	53FX
Pork	<i>Sus spp.</i>	f26	16	14-4183-01	FDA Cleared	53GE
Rabbit	<i>Oryctolagus spp.</i>	f213	10	14-4838-01	FDA Cleared	53FX

ASR (Analyte Specific Reagent). Analytical and performance characteristics are not established. Requires CLIA High Complexity.

Available through Phadia Immunology Reference Laboratory and outside the US. Contact Customer Service, 800-346-4364, for turnaround times.

Foods – Milk

Product	Code	Size	Art. No.	Status	Category Code
Cheese, cheddar type	f81	10	14-4293-01	FDA Cleared	53FX
Cheese, mold type	f82	10	14-4294-01	FDA Cleared	53FX
Cow's whey	f236	10	14-5114-01	FDA Cleared	56XX
Goat milk	Rf300	10	14-5144-10	ASR	56XX
Mare's milk	Rf286	10	14-5109-10	ASR	56XX
Milk	f2	16	14-4112-01	FDA Cleared	53GX
Milk, boiled	f231	10	14-4806-01	FDA Cleared	53FX
Sheep milk	Rf325	10	14-5237-10	ASR	56XX
Sheep whey	f326	10	14-5238-01	PIRL	
Allergen Components					
nBos d 4 alpha-lactalbumin, Milk	f76	10	14-4522-01	FDA Cleared	53FC
nBos d 5 beta-lactoglobulin, Milk	f77	10	14-4523-01	FDA Cleared	53FC
nBos d 8 Casein, Milk	f78	10	14-4524-01	FDA Cleared	53FC
nBos d Lactoferrin, Milk	f334	10	14-5253-01	PIRL	

Foods – Additives

Product	Code	Size	Art. No.	Status	Category Code	
Carob (E410)	<i>Ceratonia siliqua</i>	Rf296	10	14-5137-10	ASR	56XX
Guar, guar gum (E412)	<i>Cyamopsis tetragonolobus</i>	Rf246	10	14-5076-10	ASR	56XX
Gum arabic (E414)	<i>Acacia spp.</i>	Rf297	10	14-5138-10	ASR	56XX
Tragacanth (E413)	<i>Astragalus spp.</i>	Rf298	10	14-5139-10	ASR	56XX
Cochineal extract (Carmine red) (E120)	<i>Dactylopius coccus</i>	Rf340	10	14-5268-10	ASR	56XX

Foods – Miscellaneous

Product	Code	Size	Art. No.	Status	Category Code	
Cacao	<i>Theobroma cacao</i>	f93	10	14-4335-01	FDA Cleared	53FR
Coffee	<i>Coffea spp.</i>	Rf221	10	14-5065-10	ASR	56XX
Honey		Rf247	10	14-5078-10	ASR	56XX
Hop (fruit cone)	<i>Humulus lupulus</i>	Rf324	10	14-5228-10	ASR	56XX
Malt		f90	10	14-4330-01	FDA Cleared	53FX
Mushroom (champignon)	<i>Agaricus hortensis</i>	Rf212	10	14-5086-10	ASR	56XX
Tea	<i>Camellia sinensis</i>	Rf222	10	14-5104-10	ASR	56XX
Yeast	<i>Saccharomyces cerevisiae</i>	f45	16	14-4217-01	FDA Cleared	53GE

ASR (Analyte Specific Reagent). Analytical and performance characteristics are not established. Requires CLIA High Complexity.

Available through Phadia Immunology Reference Laboratory and outside the US. Contact Customer Service, 800-346-4364, for turnaround times.

Food – Mixes

Product	Code	Size	Art. No.	Status	Category Code
f13, f17, f18, f20, f36 Peanut, Hazel nut, Brazil nut, Almond, Coconut	fx1	16	14-4206-01	FDA Cleared	53HX
f3, f24, f37, f40, f41 Fish, Shrimp, Blue mussel, Tuna, Salmon	fx2	16	14-4207-01	FDA Cleared	53HX
f4, f7, f8, f10, f11 Wheat, Oat, Maize, Sesame seed, Buckwheat	fx3	16	14-4208-01	FDA Cleared	53HX
f1, f2, f3, f4, f13, f14 Egg white, Milk, Fish, Wheat, Peanut, Soybean	fx5	16	14-4275-01	FDA Cleared	53HX
f25, f45, f47, f48, f85 Tomato, Yeast, Garlic, Onion, Celery	fx7	10	14-4844-01	FDA Cleared	53FS
f17, f18, f33, f49, f93 Hazel nut, Brazil nut, Orange, Apple, Cacao	fx8	10	14-4845-01	FDA Cleared	53FS
f20, f84, f87, f92, f259 Almond, Kiwi, Melon, Banana, Grape	fx9	10	14-4846-01	FDA Cleared	53FS
f26, f27, f75, f83, f284 Pork, Beef, Egg yolk, Chicken, Turkey	fx10	10	14-4847-01	FDA Cleared	53FS
f8, f12, f15, f31, f260 Maize, Pea, White bean, Carrot, Broccoli	Rfx11	10	14-5177-10	ASR	53FS
f5, f9, f35, f212, f225 Rye, Rice, Potato, Mushroom, Pumpkin	fx12	10	14-5178-01	PIRL	
f12, f15, f31, f35 Pea, White bean, Carrot, Potato	fx13	10	14-4848-01	FDA Cleared	53FS
f25, f214, f216, f218 Tomato, Spinach, Cabbage, Paprika	fx14	10	14-4849-01	FDA Cleared	53FS
f33, f49, f92, f95 Orange, Apple, Banana, Peach	fx15	10	14-4850-01	FDA Cleared	53FS
f44, f94, f208, f210 Strawberry, Pear, Lemon, Pineapple	fx16	10	14-4851-01	FDA Cleared	53FS
f49, f92, f94, f95 Apple, Banana, Pear, Peach	Rfx17	10	14-5179-10	ASR	53FS
f12, f13, f14 Pea, Peanut, Soybean	fx18	10	14-4852-01	FDA Cleared	53FS
f31, f35, f214, f244 Carrot, Potato, Spinach, Cucumber	fx19	10	14-5181-01	PIRL	
f4, f5, f6, f9 Wheat, Rye, Barley, Rice	fx20	10	14-4853-01	FDA Cleared	53FS
f84, f87, f92, f95, f210 Kiwi, Melon, Banana, Peach, Pineapple	Rfx21	10	14-5206-10	ASR	53FS
f201, f202, f203, f256 Pecan nut, Cashew nut, Pistachio, Walnut	Rfx22	10	14-5212-10	ASR	53FS
f26, f27, f83, f284 Pork, Beef, Chicken meat, Turkey meat	fx23	10	14-4855-01	FDA Cleared	53FS
f17, f24, f84, f92 Hazel nut, Shrimp, Kiwi, Banana	fx24	10	14-4856-01	FDA Cleared	53FS
f10, f45, f47, f85 Sesame seed, Yeast, Garlic, Celery	fx25	10	14-4857-01	FDA Cleared	53FS
f1, f2, f13, f89 Egg white, Cow's milk, Peanut, Mustard	fx26	10	14-4894-01	PIRL	
f3, f4, f14, f17 Fish (cod), Wheat, Soybean, Hazel nut	fx27	10	14-4893-01	PIRL	
f10, f24, f27, f84 Sesame seed, Shrimp, Beef, Kiwi	fx28	10	14-4892-01	PIRL	
f33, f208, f209, f302 Orange, Lemon, Grapefruit, Mandarin	fx29	10	14-4915-01	PIRL	
f84, f91, f92, f96, f293 Kiwi, Mango, Banana, Avocado, Papaya	fx30	10	14-4916-01	PIRL	
f49, f94, f95, f242, f255 Apple, Pear, Peach, Cherry, Plum	fx31	10	14-4917-01	PIRL	
f235, f12, f15, f296 Lentil, Pea, White bean, Carob	fx32	10	14-4918-01	PIRL	
f272, f274, f273, f275 Tarragon, Marjoram, Thyme, Lovage	fx70	10	14-4357-10	ASR	53FS
f265, f266, f267, f268 Caraway, Mace, Cardamom, Clove	fx71	10	14-4358-10	ASR	53FS
f269, f219, f270, f271 Basil, Fennel seed, Ginger, Anise	fx72	10	14-4359-10	ASR	53FS
f26, f27, f83 Pork, Beef, Chicken	fx73	10	14-4825-01	FDA Cleared	53FS
f3, f205, f206, f254 Cod, Herring, Mackerel, Plaice	fx74	10	14-4827-10	ASR	53FS
f10, f17, f25, f84, f202 Sesame seed, Hazel nut, Tomato, Kiwi, Cashew nut	fx77	16	14-4988-01	PIRL	

ASR (Analyte Specific Reagent). Analytical and performance characteristics are not established. Requires CLIA High Complexity. Available through Phadia Immunology Reference Laboratory and outside the US. Contact Customer Service, 800-346-4364, for turnaround times.

IgG Antigens						
Product	Code	Size	Art. No.	Status	Category Code	
Microorganisms						
<i>Micropolyspora faeni</i>	RGm22	10	14-5302-10	ASR	54EX	
<i>Stachybotrys atra</i>	RGm24	10	14-5304-10	ASR	54EX	
<i>Thermoactinomyces vulgaris</i>	RGm23	10	14-5303-10	ASR	54EX	
Epidermals and animal proteins						
Budgerigar serum proteins, feathers and droppings	Ge90	10		PIRL		
Pigeon serum proteins	Ge93	10		PIRL		
Pigeon serum proteins, feathers and droppings	Ge91	10		PIRL		
Mixes						
m1, Gm2, m4, Gm6	Gmx6	10		PIRL		
<i>Penicillium chrysogenum, Cladosporium herbarum (Hormodendrum), Mucor racemosus, Alternaria alternata</i>						
Gm22, Gm23	Gmx7	10		PIRL		
<i>Micropolyspora faeni, Thermoactinomyces vulgaris</i>						

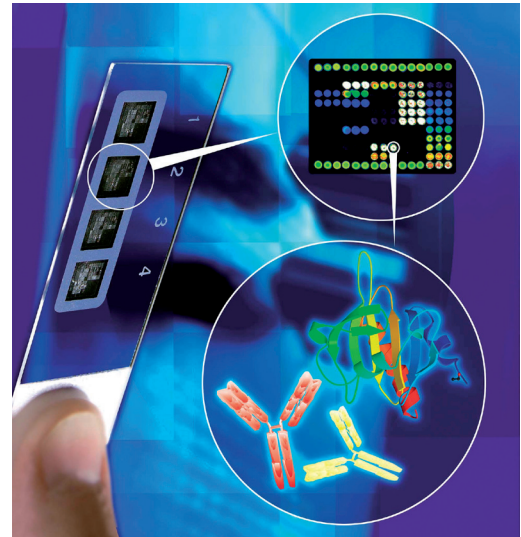
ASR (Analyte Specific Reagent). Analytical and performance characteristics are not established. Requires CLIA High Complexity. Available through Phadia Immunology Reference Laboratory and outside the US. Contact Customer Service, 800-346-4364, for turnaround times.

Immuno Solid-phase Allergen Chip**

ImmunoCAP® ISAC® is a miniaturized immunoassay platform that allows for simultaneous measurement of specific IgE or IgG4 antibodies to 112 different allergen components using only 20 µL of serum or plasma. Capillary blood sampling can be used, thus enabling a less invasive procedure for testing young children.

Purified natural or recombinant, molecular allergen components are immobilized on a solid support (biochip). In a two step assay, antibodies from the patient serum bind to the immobilized allergen components; and after a washing step, allergen-bound antibodies are detected by a fluorescence-labeled antibody.

ImmunoCAP ISAC is a semi-quantitative test. Results are reported in ISAC Standardized Units (ISU).



ImmunoCAP® ISAC

**Available through Phadia Immunology Reference Laboratory (PIRL®) and outside the US.

ImmunoCAP ISAC 112 Allergen Components

Allergen component	Allergen source COMMON NAME	LATIN NAME	PROTEIN GROUP
Food Allergens			
nGal d 1	Egg white	<i>Gallus domesticus</i>	Ovomucoid
nGal d 2	Egg white	<i>Gallus domesticus</i>	Ovalbumin
nGal d 3	Egg white	<i>Gallus domesticus</i>	Conalbumin/Ovotransferrin
nGal d 5	Egg yolk/chicken meat	<i>Gallus domesticus</i>	Livetin/Serum albumin
nBos d 4	Cow's milk	<i>Bos domesticus</i>	Alpha-lactalbumin
nBos d 5	Cow's milk	<i>Bos domesticus</i>	Beta-lactoglobulin
nBos d 6	Cow's milk and meat	<i>Bos domesticus</i>	Serum albumin
nBos d 8	Cow's milk	<i>Bos domesticus</i>	Casein
nBos d lactoferrin	Cow's milk	<i>Bos domesticus</i>	Transferrin
rGad c 1	Cod	<i>Gadus callarias</i>	Parvalbumin
nPen m 1	Shrimp	<i>Penaeus monodon</i>	Tropomyosin
nPen m 2	Shrimp	<i>Penaeus monodon</i>	Arginine kinase
nPen m 4	Shrimp	<i>Penaeus monodon</i>	Sarcoplasmic Ca-binding protein
rAna o 2	Cashew nut	<i>Anacardium occidentale</i>	Storage protein, 11S globulin
rBer e 1	Brazil nut	<i>Bertholletia excelsa</i>	Storage protein, 2S albumin
rCor a 1.0401	Hazelnut	<i>Corylus avellana</i>	PR-10 protein
rCor a 8	Hazelnut	<i>Corylus avellana</i>	Lipid transfer protein (nsLTP)
nCor a 9	Hazelnut	<i>Corylus avellana</i>	Storage protein, 11S globulin
rJug r 1	Walnut	<i>Juglans regia</i>	Storage protein, 2S albumin
nJug r 2	Walnut	<i>Juglans regia</i>	Storage protein, 7S globulin
nJug r 3	Walnut	<i>Juglans regia</i>	Lipid transfer protein (nsLTP)
nSes i 1	Sesame seed	<i>Sesamum indicum</i>	Storage protein, 2S albumin

ImmunoCAP ISAC 112 Allergen Components, con't

Allergen component	Allergen source COMMON NAME	LATIN NAME	PROTEIN GROUP
Food Allergens			
rAra h 1	Peanut	<i>Arachis hypogaea</i>	Storage protein, 7S globulin
rAra h 2	Peanut	<i>Arachis hypogaea</i>	Storage protein, Conglutin
rAra h 3	Peanut	<i>Arachis hypogaea</i>	Storage protein, 11S globulin
nAra h 6	Peanut	<i>Arachis hypogaea</i>	Storage protein, Conglutin
rAra h 8	Peanut	<i>Arachis hypogaea</i>	PR-10 protein
rAra h 9	Peanut	<i>Arachis hypogaea</i>	Lipid transfer protein (nsLTP)
rGly m 4	Soybean	<i>Glycine max</i>	PR-10 protein
nGly m 5	Soybean	<i>Glycine max</i>	Storage protein, Beta-conglycinin
nGly m 6	Soybean	<i>Glycine max</i>	Storage protein, Glycinin
nFag e 2	Buckwheat	<i>Fagopyrum esculentum</i>	Storage protein, 2S albumin
rTri a 14	Wheat	<i>Triticum aestivum</i>	Lipid transfer protein (nsLTP)
rTri a 19.0101	Wheat	<i>Triticum aestivum</i>	Omega-5 gliadin
nTri a aA_Tl	Wheat	<i>Triticum aestivum</i>	
nAct d 1	Kiwi	<i>Actinidia deliciosa</i>	
nAct d 2	Kiwi	<i>Actinidia deliciosa</i>	Thaumatococin-like protein
nAct d 5	Kiwi	<i>Actinidia deliciosa</i>	
rAct d 8	Kiwi	<i>Actinidia deliciosa</i>	PR-10 protein
rApi g 1	Celery	<i>Apium graveolens</i>	PR-10 protein
rMal d 1	Apple	<i>Malus domestica</i>	PR-10 protein
rPru p 1	Peach	<i>Prunus persica</i>	PR-10 protein
rPru p 3	Peach	<i>Prunus persica</i>	Lipid transfer protein (nsLTP)
Aeroallergens			
nCyn d 1	Bermuda grass	<i>Cynodon dactylon</i>	Grass group 1
rPhl p 1	Timothy	<i>Phleum pratense</i>	Grass group 1
rPhl p 2	Timothy	<i>Phleum pratense</i>	Grass group 2
nPhl p 4	Timothy	<i>Phleum pratense</i>	
rPhl p 5b	Timothy	<i>Phleum pratense</i>	Grass group 5
rPhl p 6	Timothy	<i>Phleum pratense</i>	
rPhl p 7	Timothy	<i>Phleum pratense</i>	Polcalcin
rPhl p 11	Timothy	<i>Phleum pratense</i>	
rPhl p 12	Timothy	<i>Phleum pratense</i>	Profilin
rAln g 1	Alder	<i>Alnus glutinosa</i>	PR-10 protein
rBet v 1	Birch	<i>Betula verrucosa</i>	PR-10 protein
rBet v 2	Birch	<i>Betula verrucosa</i>	Profilin
rBet v 4	Birch	<i>Betula verrucosa</i>	Polcalcin
rCor a 1.0101	Hazel pollen	<i>Corylus avellana</i>	PR-10 protein
nCry j 1	Japanese cedar	<i>Cryptomeria japonica</i>	
nCup a 1	Cypress	<i>Cupressus arizonica</i>	
rOle e 1	Olive	<i>Olea europaea</i>	
nOle e 7	Olive	<i>Olea europaea</i>	Lipid transfer protein (nsLTP)
rOle e 9	Olive	<i>Olea europaea</i>	
rPla a 1	Plane tree	<i>Platanus acerifolia</i>	
nPla a 2	Plane tree	<i>Platanus acerifolia</i>	
rPla a 3	Plane tree	<i>Platanus acerifolia</i>	Lipid transfer protein (nsLTP)
nAmb a 1	Ragweed	<i>Ambrosia artemisiifolia</i>	
nArt v 1	Mugwort	<i>Artemisia vulgaris</i>	
nArt v 3	Mugwort	<i>Artemisia vulgaris</i>	Lipid transfer protein (nsLTP)
rChe a 1	Goosefoot	<i>Chenopodium album</i>	
rMer a 1	Annual mercury	<i>Mercurialis annua</i>	Profilin
rPar j 2	Wall pellitory	<i>Parietaria judaica</i>	Lipid transfer protein (nsLTP)
rPla l 1	Plantain (English)	<i>Plantago lanceolata</i>	
nSal k 1	Saltwort	<i>Salsola kali</i>	

ImmunoCAP ISAC 112 Allergen Components, con't

Allergen component	Allergen source COMMON NAME	LATIN NAME	PROTEIN GROUP
Aeroallergens			
rCan f 1	Dog	<i>Canis familiaris</i>	Lipocalin
rCan f 2	Dog	<i>Canis familiaris</i>	Lipocalin
nCan f 3	Dog	<i>Canis familiaris</i>	Serum albumin
rCan f 5	Dog	<i>Canis familiaris</i>	Arginine esterase
rEqu c 1	Horse	<i>Equus caballus</i>	Lipocalin
nEqu c 3	Horse	<i>Equus caballus</i>	Serum albumin
rFel d 1	Cat	<i>Felis domesticus</i>	Uteroglobin
nFel d 2	Cat	<i>Felis domesticus</i>	Serum albumin
rFel d 4	Cat	<i>Felis domesticus</i>	Lipocalin
nMus m 1	Mouse	<i>Mus musculus</i>	Lipocalin
rAlt a 1	Alternaria	<i>Alternaria alternata</i>	
rAlt a 6	Alternaria	<i>Alternaria alternata</i>	Enolase
rAsp f 1	Aspergillus	<i>Aspergillus fumigatus</i>	
rAsp f 3	Aspergillus	<i>Aspergillus fumigatus</i>	
rAsp f 6	Aspergillus	<i>Aspergillus fumigatus</i>	Mn superoxide dismutase
rCla h 8	Cladosporium	<i>Cladosporium herbarum</i>	
rBlo t 5	House dust mite	<i>Blomia tropicalis</i>	
nDer f 1	House dust mite	<i>Dermatophagoides farinae</i>	
rDer f 2	House dust mite	<i>Dermatophagoides farinae</i>	
nDer p 1	House dust mite	<i>Dermatophagoides pteronyssinus</i>	
rDer p 2	House dust mite	<i>Dermatophagoides pteronyssinus</i>	
rDer p 10	House dust mite	<i>Dermatophagoides pteronyssinus</i>	Tropomyosin
rLep d 2	Storage mite	<i>Lepidoglyphus destructor</i>	
rBla g 1	Cockroach	<i>Blattella germanica</i>	
rBla g 2	Cockroach	<i>Blattella germanica</i>	
rBla g 5	Cockroach	<i>Blattella germanica</i>	
nBla g 7	Cockroach	<i>Blattella germanica</i>	Tropomyosin
Other			
rApi m 1	Honey bee venom	<i>Apis mellifera</i>	Phospholipase A2
nApi m 4	Honey bee venom	<i>Apis mellifera</i>	Melittin
rPol d 5	Paper wasp venom	<i>Polistes dominulus</i>	Venom, Antigen 5
rVes v 5	Common wasp venom	<i>Vespula vulgaris</i>	Venom, Antigen 5
rAni s 1	Anisakis	<i>Anisakis simplex</i>	
rAni s 3	Anisakis	<i>Anisakis simplex</i>	Tropomyosin
rHev b 1	Latex	<i>Hevea brasiliensis</i>	
rHev b 3	Latex	<i>Hevea brasiliensis</i>	
rHev b 5	Latex	<i>Hevea brasiliensis</i>	
rHev b 6.01	Latex	<i>Hevea brasiliensis</i>	
rHev b 8	Latex	<i>Hevea brasiliensis</i>	Profilin
nMUXF3	Sugar epitope from Bromelain		CCD-marker

EliA

EliA is a novel enzyme immunoassay method for measurement of autoantibodies. Tests for the various autoantibodies listed below are routinely used in the diagnosis of autoimmune diseases, including connective tissue diseases (rheumatoid arthritis, lupus erythematosus, progressive systemic sclerosis or scleroderma, Sjogren syndrome and polymyositis/dermatomyositis), celiac disease and antiphospholipid syndrome. EliA tests are performed on an automated platform optimized for the method.



EliA™ Tests for Diagnostic Use

Product	Size	Art. No.
Connective Tissue Diseases		
EliA CTD Screen Well**	4 x 12	14-5596-01
EliA Symphony Well	4 x 12	14-5508-01
EliA dsDNA Well	4 x 12	14-5500-01
EliA ssDNA Well**	2 x 12	14-5629-01
EliA U1RNP Well	4 x 12	14-5501-01
EliA RNP70 Well	4 x 12	14-5511-01
EliA SmD ^P Well	4 x 12	14-5624-01
EliA Scl-70 ^S Well	2 x 12	14-5637-01
EliA Ro Well	4 x 12	14-5503-01
EliA Ro52 Well**	2 x 12	14-5598-01
EliA Ro60 Well**	4 x 12	14-5525-01
EliA La Well	4 x 12	14-5504-01
EliA CENP Well	2 x 12	14-5505-01
EliA Jo-1 Well	2 x 12	14-5507-01
EliA Fibrillarin Well**	2 x 12	14-5605-01
EliA Rib-P Well**	2 x 12	14-5521-01
EliA PM-Scl Well**	2 x 12	14-5602-01
EliA PCNA Well**	2 x 12	14-5603-01
EliA Mi-2 Well**	2 x 12	14-5604-01
EliA RNA Poly III** Well	2 x 12	14-5599-01
Rheumatoid Arthritis		
EliA CCP Well	4 x 12	14-5515-01
EliA CCP IgA Well**	2 x 12	14-5615-01
EliA RF IgM Well	4 x 12	14-5600-01
EliA RF IgA Well	4 x 12	14-5601-01
EliA RF IgG Well**	4 x 12	14-5617-01
Anti-Phospholipid Syndrome		
EliA Cardiolipin IgG Well	4 x 12	14-5529-01
EliA Cardiolipin IgM Well	4 x 12	14-5530-01
EliA Cardiolipin IgA Well	2 x 12	14-5528-01
EliA β2-Glycoprotein I IgG Well	4 x 12	14-5532-01
EliA β2-Glycoprotein I IgM Well	4 x 12	14-5533-01
EliA β2-Glycoprotein I IgA Well	2 x 12	14-5531-01
Gastrointestinal Diseases		
EliA Celikey IgA Well	4 x 12	14-5517-01
EliA Celikey IgG Well	2 x 12	14-5518-01
EliA Gliadin IgA Well	4 x 12	14-5519-01
EliA Gliadin IgG Well	4 x 12	14-5520-01
EliA Gliadin ^{DP} IgA Well	4 x 12	14-5538-01
EliA Gliadin ^{DP} IgG Well	4 x 12	14-5539-01
EliA Calprotectin 2 Well**	4 x 16	14-6748-01
EliA ASCA IgG Well**	4 x 12	14-5635-01
EliA ASCA IgA Well**	4 x 12	14-5633-01
Vasculitis		
EliA PR3 ^S Well	4 x 12	14-5536-01
EliA MPO ^S Well	4 x 12	14-5537-01
EliA GBM Well	2 x 12	14-5514-01
Liver Diseases		
EliA M2 Well**	4 x 12	14-5649-01
Thyroid Diseases		
EliA anti-TG Well**	4 x 16	14-5642-01
EliA anti-TPO Well**	4 x 16	14-5641-01
Other		
EliA Anti-IgA Well**	2 x 12	14-5535-01

**Available outside the US.

Test Specific Reagents for EliA™ tests (Phadia® 2500 / Phadia® 5000)*

Product	Size	Art. No.
EliA ANA Positive Control 2500/5000*	6 x 2	83-1073-01
EliA ANCA/GBM Positive Control 2500/5000*	6 x 2	83-1075-01
EliA CCP Positive Control 2500/5000	6 x 2	83-1076-01
EliA Celiac Positive Control 2500/5000*	6 x 2	83-1077-01
EliA APS Positive Control 2500/5000*	6 x 2	83-1078-01
EliA RF Positive Control 2500/5000*	6 x 2	83-1087-01
EliA Negative Control 2500/5000*	6 x 2	83-1074-01
EliA Calprotectin Positive Control 2500/5000**	6 x 2	83-1084-01
EliA Calprotectin Negative Control 2500/5000**	6 x 2	83-1086-01
EliA ASCA Positive Control 2500/5000**	6 x 2	83-1108-01
EliA Thyroid Positive Control 2500/5000**	6 x 2	83-1114-01
EliA M2 Positive Control 2500/5000**	6 x 2	83-1105-01

Method Specific Reagents for EliA™ tests (Phadia® 2500 / Phadia® 5000)*

Product	Size	Art. No.
EliA IgG Calibrator Well	4 x 12	14-5509-01
EliA IgG Calibrator Strips	5 x 1 curve	83-1015-01
EliA IgG Curve Control Strips	5 x 6 runs	83-1016-01
EliA IgG Conjugate 200	6 x 200	83-1018-01
EliA IgA Calibrator Well	4 x 12	14-5516-01
EliA IgA Calibrator Strips	5 x 1 curve	83-1019-01
EliA IgA Curve Control Strips	5 x 6 runs	83-1020-01
EliA IgA Conjugate 200	6 x 200	83-1022-01
EliA IgM Calibrator Well	4 x 12	14-5527-01
EliA IgM Calibrator Strips	5 x 1 curve	83-1052-01
EliA IgM Curve Control Strips	5 x 6 runs	83-1053-01
EliA IgM Conjugate 200	6 x 200	83-1072-01
EliA Calprotectin 2 Calibrator Well**	4 x 16	14-5667-01
EliA Calprotectin 2 Calibrator Strips**	5 x 1 curve	83-1123-01
EliA Calprotectin 2 Curve Control Strips**	5 x 6 runs	83-1129-01
EliA Calprotectin 2 Conjugate 50**	6 x 50	83-1127-01
EliA Calprotectin 2 Conjugate 200**	6 x 200	83-1128-01
EliA Sample Diluent	6 x Bottles (400ml = 1350 samples)	83-1071-01
EliA Calprotectin 2 Extraction Buffer**	6 x 15	83-1147-01
EliA Stool Extraction Kit 2**	50 tubes	14-5651-01
Fecal sample preparation kit**	50 tubes	14-5619-01
EliA Sample Diluent	6 Bottles	83-1071-01

Test Specific Reagents for EliA™ tests (Phadia® 250)

Product	Size	Art. No.
EliA ANA Positive Control 250	6 x 2	83-1033-01
EliA ANCA/GBM Positive Control 250	6 x 2	83-1034-01
EliA CCP Positive Control 250	6 x 2	83-1035-01
EliA Celiac Positive Control 250	6 x 2	83-1036-01
EliA APS Positive Control 250	6 x 2	83-1055-01
EliA RF Positive Control 250	6 x 2	83-1070-01
EliA IgG/IgM/IgA Negative Control 250	6 x 2	83-1037-01
EliA Anti-IgA Positive Control 250**	6 x 2	83-1080-01
EliA Calprotectin Positive Control 250**	6 x 2	83-1083-01
EliA Calprotectin Negative Control 250**	6 x 2	83-1085-01
EliA ASCA Positive Control 250**	6 x 2	83-1107-01
EliA Thyroid Positive Control 250**	6 x 2	83-1104-01
EliA M2 Positive Control 250**	6 x 2	83-1080-01

*Pending FDA Clearance.

**Available outside the US.

Method Specific Reagents for EliA™ tests (Phadia® 250)

Product	Size	Art. No.
EliA IgG Calibrator Well	4 x 12	14-5509-01
EliA IgG Calibrator Strips	5 x 1 curve	83-1015-01
EliA IgG Curve Control Strips	5 x 6 runs	83-1016-01
EliA IgG Conjugate 50	6 x 50	83-1017-01
EliA IgG Conjugate 200	6 x 200	83-1018-01
EliA IgA Calibrator Well	4 x 12	14-5516-01
EliA IgA Calibrator Strips	5 x 1 curve	83-1019-01
EliA IgA Curve Control Strips	5 x 6 runs	83-1020-01
EliA IgA Conjugate 50	6 x 50	83-1021-01
EliA IgA Conjugate 200	6 x 200	83-1022-01
EliA IgM Calibrator Well	4 x 12	14-5527-01
EliA IgM Calibrator Strips	5 x 1 curve	83-1052-01
EliA IgM Curve Control Strips	5 x 6 runs	83-1053-01
EliA IgM Conjugate 50	6 x 50	83-1051-01
EliA IgM Conjugate 200	6 x 200	83-1072-01
EliA Calprotectin 2 Calibrator Well**	4 x 16	14-5667-01
EliA Calprotectin 2 Calibrator Strips**	5 x 1 curve	83-1123-01
EliA Calprotectin 2 Curve Control Strips**	5 x 6 runs	83-1129-01
EliA Calprotectin 2 Conjugate 50**	6 x 50	83-1127-01
EliA Calprotectin 2 Conjugate 200**	6 x 200	83-1128-01
EliA Sample Diluent	6 x 188	83-1023-01
EliA Calprotectin 2 Extraction Buffer**	6 x 15	83-1147-01
EliA Stool Extraction Kit 2**	50 tubes	14-5651-01
Fecal sample preparation kit**	50 tubes	14-5619-01
EliA Sample Diluent	6 x 180	83-1023-01

Test Specific Reagents for EliA™ tests (Phadia® 100)

Product	Size	Art. No.
EliA Research Well**	3 x 12	14-5526-01
EliA Research Starter Kit**	Empty 2-litre bottle, EliA Research Software diskette, EliA Research Software Deinstallation diskette	83-1032-01
EliA ANA Positive Control 100	6 x 2	83-1038-01
EliA ANCA/GBM Positive Control 100	6 x 2	83-1039-01
EliA CCP Positive Control 100	6 x 2	83-1040-01
EliA Celiac Positive Control 100	6 x 2	83-1041-01
EliA APS Positive Control 100	6 x 2	83-1054-01
EliA RF Positive Control 100	6 x 2	83-1069-01
EliA IgG/IgM/IgA Negative Control 100	6 x 2	83-1042-01
EliA Anti-IgA Positive Control 100**	6 x 2	83-1079-01
EliA Calprotectin Positive Control 100**	6 x 2	83-1066-01
EliA Calprotectin Negative Control 100**	6 x 2	83-1067-01
EliA ASCA Positive Control 100**	6 x 2	83-1106-01
EliA M2 Positive Control 100**	6 x 2	83-1103-01

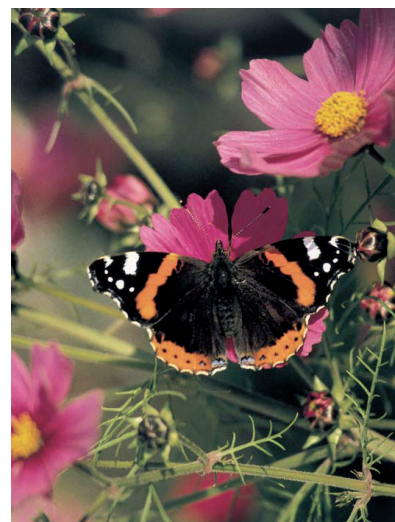
Method Specific Reagents for EliA™ tests (Phadia® 100)

Product	Size	Art. No.
EliA IgG Calibrator Well	4 x 12	14-5509-01
EliA IgG Calibrators	1 curve	83-1000-01
EliA IgG Curve Control	6 runs	83-1001-01
EliA IgG Conjugate	6 x 48	83-1002-01
EliA IgG Conjugate	2 x 48	83-1005-01
EliA IgA Calibrator Well	4 x 12	14-5516-01
EliA IgA Calibrators	1 curve	83-1013-01
EliA IgA Curve Control	6 runs	83-1010-01
EliA IgA Conjugate	6 x 48	83-1014-01
EliA IgA Conjugate	2 x 48	83-1012-01
EliA IgM Calibrator Well	4 x 12	14-5527-01
EliA IgM Calibrators	1 curve	83-1049-01
EliA IgM Curve Control	6 runs	83-1050-01
EliA IgM Conjugate	6 x 48	83-1048-01
EliA IgM Conjugate	2 x 48	83-1031-01
EliA Calprotectin Calibrator Well**	4 x 12	14-5618-01
EliA Calprotectin Calibrators**	1 curve	83-1058-01
EliA Calprotectin Curve Control**	6 runs	83-1059-01
EliA Calprotectin Conjugate**	2 x 48	83-1060-01
EliA Calprotectin Conjugate**	6 x 48	83-1061-01
EliA Sample Diluent	6 x 30 Dilutions	83-1003-01
EliA Calprotectin Extraction Buffer**	6 x 24	83-1068-01
EliA Stool Extraction Kit**	50	14-5638-01
Fecal sample preparation kit**	50	14-5619-01
EliA Dummy Well	4 x 12	14-5510-01

**Available outside the US.

The advantages of the VareliSA microplate assay are:

- Breakaway microwells for maximum flexibility and cost effectiveness
- Maximum specificity and sensitivity by using recombinant antigens
- Short incubation times (30 - 30 - 10 minutes)
- Manual or automated assay procedure
- Room temperature incubations
- Quantitative and qualitative evaluation
- User friendly by ready-to-use reagents
- Objective values through computer-assisted evaluation
- Specimen: serum / plasma

**Connective Tissue Diseases**

Product	Size	Art. No.
ANA 8 Screen**	96	12496
ANA Profile**	96 (10 profiles)	18396
CENP Antibodies	96	16896
dsDNA Antibodies	96	14196
Histone (IgG, IgM) Antibodies	96	16496
Jo-1 Antibodies	96	16796
ReCombi ANA Profile	96 (10 profiles)	18496
ReCombi ANA Screen	96	12596
U1RNP Antibodies	96	17096
Scl-70 Antibodies	96	16996
Sm Antibodies	96	18296
SS-A/Ro Antibodies	96	16696
SS-B/La Antibodies	96	19696
ssDNA Antibodies	96	14896

Anti-Phospholipid Syndrome

Product	Size	Art. No.
β2-Glycoprotein I IgA Antibodies	96	18996
β2-Glycoprotein I IgG Antibodies	96	18796
β2-Glycoprotein I IgM Antibodies	96	18896
β2-Glycoprotein I Antibodies Screen	96	19096
Cardiolipin IgA Antibodies	96	15796
Cardiolipin IgG Antibodies	96	15596
Cardiolipin IgM Antibodies	96	15696
Cardiolipin Antibodies Screen	96	15896

Vasculitis

Product	Size	Art. No.
MPO ANCA	96	17696
PR3 ANCA	96	17796
GBM Antibodies**	96	13396

Thyroid Diseases

Product	Size	Art. No.
TG Antibodies	96	12196
TPO Antibodies	96	12396

Please note: product will be discontinued end of 2016.

**Available outside the US.

Celiac Disease

Product	Size	Art. No.
Gliadin IgA Antibodies	96	19896
Gliadin IgG Antibodies	96	19996
Celikey® Tissue Transglutaminase (human recombinant) IgA Antibody Assay	96	18196
Celikey® IgG Tissue Transglutaminase (human recombinant) IgG Antibody Assay	96	17996

Liver Diseases

Product	Size	Art. No.
LKM1 Antibodies**	96	17596
M2 Antibodies**	96	14796

Gastro Diseases

Product	Size	Art. No.
Helicobacter pylori IgG Antibodies	96	19596
Parietal Cell Antibodies**	96	14396

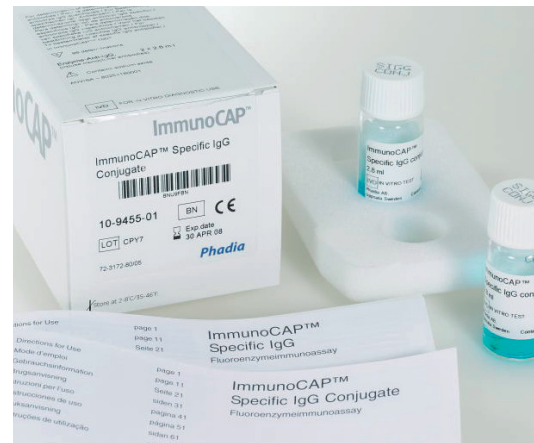
Miscellaneous

Product	Size	Art. No.
Sperm Antibodies**	96	14496

Please note: product will be discontinued end of 2016.
 **Available outside the US.

Thyroglobulin IgG and Thyroid Peroxidase IgG

Thyroid autoimmunity comprises a number of distinct pathogenically related immune disorders of the thyroid gland. The autoimmune response is dominated by anti-thyroid antibodies directed against Thyroglobulin (TG) and Thyroid Peroxidase (TPO). ImmunoCAP® Thyroglobulin and Thyroid Peroxidase quantitatively measure IgG antibodies specific for Thyroglobulin and Thyroid Peroxidase, respectively, in human serum or plasma. These tests can be used as an aid in the clinical diagnosis of immune mediated thyroid diseases, such as Hashimoto's (autoimmune) thyroiditis and Graves' disease.



Thyroid Diseases

Product	Size	Art. No.
Thyroglobulin ImmunoCAP	3 x 16	14-4507-40
Thyroid Peroxidase ImmunoCAP	3 x 16	14-4508-40
Control		
Thyroglobulin IgG Antibodies Control NLH	3 x 2 x 0.5 ml	10-9413-01
Thyroid Peroxidase IgG Antibodies Control NLH	3 x 2 x 0.5 ml	10-9414-01

Method Specific Reagents for ImmunoCAP® Tests (Phadia® 250, Phadia® 2500, Phadia® 5000)

Product	Size	Art. No.
Specific IgG Conjugate 50	2 x 50	10-9318-02
Specific IgG Calibrator Strip	1 curve	10-9327-01
Specific IgG Curve Control Strip	3 pairs	10-9349-01
IgA/IgG Calibrator ImmunoCAP	16	14-4424-01
Autoimmunity Specific IgG Sample Diluent	6 x 50 ml	10-9435-01
System reagents, see page 45-46, 48		

Method Specific Reagents for ImmunoCAP® Tests (Phadia® 100)

Product	Size	Art. No.
Specific IgG Conjugate	2 x 48	10-9455-02
Specific IgG Calibrators	1 curve	10-9305-01
Specific IgG Curve Controls	3 pairs	10-9333-01
IgA/IgG Calibrator ImmunoCAP	16	14-4424-01
Autoimmunity Specific IgG Sample Diluent	6 x 10 ml	10-9499-01
System reagents, see page 49		

Gliadin IgA/IgG

ImmunoCAP® Gliadin IgA/IgG quantitatively measures IgA and IgG antibodies specific for gliadin in human serum or plasma. Measurement of circulating anti-gliadin antibodies can be used as an aid in the clinical diagnosis of patients with celiac disease and dermatitis herpetiformis, in conjunction with other clinical findings.



Celiac Disease

Product	Code	Size	Art. No.
Gliadin IgA/IgG ImmunoCAP	AGf98	3 x 16	14-4425-35
Control			
ImmunoCAP Gliadin IgA/IgG Control L		6 x 4 doses	10-9484-01
ImmunoCAP Gliadin IgA Control H		6 x 4 doses	10-9485-01
ImmunoCAP Gliadin IgG Control H		6 x 4 doses	10-9486-01

Method Specific Reagents for ImmunoCAP® Tests (Phadia® 100)

Product	Code	Size	Art. No.
Specific IgA Conjugate		48	10-9458-02
Specific IgA Calibrators		1 curve	10-9304-01
Specific IgA Curve Controls		3 pairs	10-9308-01
Specific IgG Conjugate		2 x 48	10-9455-02
Specific IgG Calibrators		1 curve	10-9305-01
Specific IgG Curve Controls		3 pairs	10-9333-01
IgA/IgG Calibrator ImmunoCAP		16	14-4424-01
Specific IgA/IgG Sample Diluent		6 x 10 ml	10-9498-01
System reagents, see page 49			

Miscellaneous Assays Available Through PiRL

MR-proADM

B•R•A•H•M•S MR-proADM KRYPTOR® is a kit designed for the B•R•A•H•M•S. KRYPTOR automated immunofluorescent assay of midregional pro adrenomedullin (MR-proADM) in human EDTA plasma.

MR-proADM is a new diagnostic parameter for outcome prediction in patients with acute congestive heart failure as well as in patients presenting with dyspnea in general; furthermore it is particularly strong in predicting short-term prognosis within 30 days after assessment.

Procalcitonin PCT

The B•R•A•H•M•S PCT sensitive KRYPTOR is an immunofluorescent assay used to determine the concentration of PCT (procalcitonin) in human serum and plasma.

The B•R•A•H•M•S PCT sensitive KRYPTOR is intended for use in conjunction with other laboratory findings and clinical assessments to aid in the risk assessment of critically ill patients on their first day of ICU admission for progression to severe sepsis and septic shock.

Copeptin

B•R•A•H•M•S Copeptin us KRYPTOR is an automated immunofluorescent assay to determine the concentration of Copeptin (C-terminal proVasopressin = CTproAVP) in human serum and human plasma (EDTA, heparin). The B•R•A•H•M•S Copeptin KRYPTOR assay measures the C-terminal pre-cursor fragment of Arginine vasopressin. Arginine vasopressin is a key regulator of water balance, has haemodynamic effects and plays a critical role in the regulation of hypothalamo-pituitary-adrenal axis, reflecting the individual stress response. In patients with symptoms suggestive of Acute Coronary Syndrome (ACS) a negative Kryptor Copeptin value, together with a negative Troponin and other clinical findings (i.e., ECG), is indicated as an aide to rule out myocardial infarction at initial presentation.

Miscellaneous Tests

Procalcitonin PCT **

MR-proADM†**

Copeptin**

†For Research Use Only.

**Available through Phadia Immunology Reference Laboratory and outside the US. Contact Customer Service, 800-346-4364, for turnaround times.

Phadia® 5000



High productivity, automation and cost effectiveness

- Allergy and Autoimmunity testing in one run
- Throughput:
 - Phadia® 5000: 960 ImmunoCAP results/hour
 - Phadia® 5000 (EliA): 720 results/hour
150 EliA results/hour
 - Phadia® 5000 (EliA x 2): 480 ImmunoCAP results/hour
300 EliA results/hour
 - Phadia® 5000 (EliA x 4): 600 EliA results/hour
- Onboard dilutions (EliA)
- Continuous random access
- All reagents available onboard
- 28-day storage of calibrator curves
- Automatic start-up and shutdown function
- Connectable to Laboratory Automation Systems
- Remote diagnostics via Phadia LabCommunity

True accuracy, high precision and outstanding quality

- Excellent consistency over time and between countries, systems, laboratories and users
- An allergen panel detecting sensitization to more than 650 allergens and 100 allergen components
- An autoimmunity panel for evaluation of over 20 diseases
- The largest quality assessment program in the world

Phadia® 5000 – System reagents

Product	ImmunoCAP®	EliA™	Art. No.
	Size	Size	
Development Solution	6 x 2200	6 x 3900	10-9314-01
Stop Solution	~ 4600	~ 14000	34-2337-11
Washing Solution Concentrate	2800 ml	2800 ml	34-2337-21
Washing Solution Additive	4 x 850 ml	4 x 850 ml	10-9518-01
FluoroC	6 vials	6 vials	10-9264-01
Maintenance Solution Kit Large	1 procedure	1 procedure	10-9537-01

Phadia® 5000 Instrument

Product	Size	Art. No.
Phadia® 5000	1	12-4000-00
Phadia® 5000 (EliA)	1	12-4000-01
Phadia® 5000 (EliA x 2)	1	12-4000-02
Phadia® Carrier Loader	1	12-4200-00

Phadia® 5000 Accessories

Product	Size	Art. No.
Dilution well	50 x 18	12-4005-69



High productivity, automation and cost effectiveness

- Allergy and Autoimmunity testing in one run
- Throughput:
 - Phadia® 2500: 480 ImmunoCAP results/hour
 - Phadia® 2500 (EliA): 240 ImmunoCAP results/hour
150 EliA results/hour
 - Phadia® 2500 (EliA x 2): 300 EliA results/hour
- Onboard dilutions (EliA)
- Continuous random access
- All reagents available onboard
- 28-day storage of calibrator curves
- Automatic start-up and shutdown function
- Connectable to Laboratory Automation Systems
- Remote diagnostics via Phadia LabCommunity

True accuracy, high precision and outstanding quality

- Excellent consistency over time and between countries, systems, laboratories and users
- An allergen panel detecting sensitization to more than 650 allergens and 100 allergen components
- An autoimmunity panel for evaluation of over 20 diseases
- The largest quality assessment program in the world

Phadia® 2500 – System reagents

Product	ImmunoCAP®	EliA™	Art. No.
	Size	Size	
Development Solution	6 x 2200	6 x 3900	10-9314-01
Stop Solution	~ 4600	~ 14000	34-2337-11
Washing Solution Concentrate	2800 ml	2800 ml	34-2337-21
Washing Solution Additive	4 x 850 ml	4 x 850 ml	10-9518-01
FluoroC	6 vials	6 vials	10-9264-01
Maintenance Solution Kit Large	2 procedures	2 procedures	10-9537-01

Phadia® 2500 Instrument

Product	Size	Art. No.
Phadia® 2500	1	12-4100-00
Phadia® 2500 (EliA)	1	12-4100-01

Phadia® 2500 Accessories

Product	Size	Art. No.
Dilution well	50 x 18	12-4005-69

Phadia® 1000



High productivity, automation and cost effectiveness

- Throughput: 240 tests/hour
- Continuous random access
- All reagents available onboard
- 28-day storage of calibrations curves
- Automatic start-up and shutdown function
- Connectable to Laboratory Automation Systems
- Remote diagnostics via Phadia LabCommunity

True accuracy, high precision and outstanding quality

- Excellent consistency over time and between countries, systems, laboratories and users
- An allergen panel detecting sensitization to more than 650 allergens and 100 allergen components
- The largest quality assessment program in the world

Phadia® 1000 – System reagents

Product	Size	Art. No.
Development Solution	6 x ~1200	10-9439-01
Development Solution	6 x ~2200	10-9314-01
Stop Solution	~1200	34-2271-51
Washing Solution	2 x 5 l	10-9202-01
FluoroC	6 vials	10-9264-01
Maintenance Solution Kit	2 procedures	10-9476-01
Maintenance Solution Kit Large	8 procedures	10-9537-01

Phadia® 1000 Instrument

Product	Size	Art. No.
Phadia® 1000	1	12-3800-01

Phadia® 1000 Accessories

Product	Size	Art. No.
Sample Rack, Phadia® 1000	10	12-3805-02
Sample Rack Red, Phadia® 1000	5	12-3807-37
Pipette Tips (5000), Phadia® 1000	10 x 500	12-3805-03
Pipette Tips in Racks (3840), Phadia® 1000	24 x 160	12-3805-04
Sample Rack Labels (1-100), Phadia® 1000	100	12-3805-05
Sample Rack Holder, Phadia® 1000	1	12-3807-41
Covering, Solid Waste Container, Phadia® 1000	25	12-3807-25
Rinse/Wash Bottle, Phadia® 1000	1 x 5 l	12-3806-82
Waste Bottle, Phadia® 1000	1 x 10 l	12-3806-83
External Temperature and Humidity Sensor, Phadia® 1000/250	1	12-3907-15



High productivity, automation and cost effectiveness

- Throughput: 60 tests/hour
- ImmunoCAP and EliA tests in one run
- Onboard dilutions
- Continuous random access
- All reagents available onboard
- 28-day storage of calibrations curves
- Connectable to Laboratory Automation Systems
- Remote diagnostics via Phadia LabCommunity

True accuracy, high precision and outstanding quality

- Excellent consistency over time and between countries, systems, laboratories and users
- An allergen panel detecting sensitization to more than 650 allergens and 100 allergen components
- An autoimmunity panel for evaluation of over 20 diseases
- The largest quality assessment program in the world

Phadia® 250 – System reagents

Product	ImmunoCAP®	EliA™	Art. No.
	Size	Size	
Development Solution	6 x ~315	6 x >170	10-9440-01
Development Solution	6 x ~200	6 x 110	10-9441-01
Stop Solution	6 x ~185	6 x 560	10-9442-01
Stop Solution		6 x >292	10-9479-01
Washing Solution	2 x 5 l	2 x 5 l	10-9202-01
Washing Solution	6 x 1 l	6 x 1 l	10-9422-01
FluoroC	6 vials	6 vials	10-9264-01
Maintenance Solution Kit	2 procedures	2 procedures	10-9476-01
Maintenance Solution Kit Large	16 procedures	16 procedures	10-9537-01

Phadia® 250 Instrument

Product	Size	Art. No.
Phadia® 250	1	12-3900-01

Phadia® 250 Accessories

Product	Size	Art. No.
Carrier Storage Tray, Phadia® 250	1	12-3906-75
Conjugate Storage Insert, Phadia® 250	1	12-3906-76
Development Storage Insert, Phadia® 250	1	12-3906-77
Diluent Storage Insert, Phadia® 250	1	12-3906-78
Carrier Loading Tray, Phadia® 250	1	12-3906-79
Sample Rack (5-pack), Phadia® 250	5	12-3906-80
Sample Rack Holder, Phadia® 250	1	12-3907-09
Elution Wells, Phadia® 250	1 set	12-3906-81
Strip Storage Insert, Phadia® 250	1	12-3906-82
Rack/Tray Bar Code Labels, Phadia® 250	100	12-3906-83
Warning Labels Kit, Phadia® 250	8 sheets with labels	12-3906-84
Dilution Plate, Phadia® 250	100	12-3907-08
Sample Rack Adapter, Phadia® 250	5	12-3906-95
Sample Rack Adapter, narrow tube, Phadia® 250	5	12-3907-06
Wash Bottle, Phadia® 250	1 x 10 l	12-3906-41
Rinse Bottle, Phadia® 250	1 x 10 l	12-3906-44
Waste Bottle, Phadia® 250	1 x 20 l	12-3906-45
External Temperature and Humidity Sensor, Phadia® 1000/250	1	12-3907-15

Phadia® 100



High productivity, automation and cost effectiveness

- Throughput: 48 results in one assay
- Automated processing of both EliA and ImmunoCAP assays
- Onboard dilutions
- Run as stand-alone unit or in a cluster
- Batch processing
- 28-day storage of calibrations curves
- Remote diagnostics via Phadia LabCommunity

True accuracy, high precision and outstanding quality

- Excellent consistency over time and between countries, systems, laboratories and users
- An allergen panel detecting sensitization to more than 650 allergens and 100 allergen components
- An autoimmunity panel for evaluation of over 20 diseases
- The largest quality assessment program in the world

Phadia® 100 – System Reagents

Product	Size	EliA	Art. No.
Development Solution	6 x 100	6 x 48	10-9478-01
Stop Solution	6 x 100	6 x 240	10-9479-01
Washing Solution	2 x 5 l	2 x 5 l	10-9202-01
Washing Solution	6 x 1 l	6 x 1 l	10-9422-01
FluoroC	6 vials	6 vials	10-9264-01
Maintenance Solution Kit	10 procedures	10 procedures	10-9476-01

Phadia® 100 Instrument

Product	Size	Art. No.
Phadia® 100	1	12-3500-02

Phadia® 100 Accessories

Product	Size	Art. No.
Printer paper, Phadia® 100	2 rolls	12-3501-05
Paper Holder Pin, Phadia® 100	1	12-3500-93
Carrier Rack, Phadia® 100	1	12-3250-01
Carrier Rack Inserts, Phadia® 100	40	12-3505-41
Carrier Rack Stand, Phadia® 100	1	12-3251-01

Phadia® 100 Software and Computer Accessories

Product	Size	Art. No.
Phadia® Information Data Manager Software Package	1	12-3801-11
Software package, Phadia® 100	1	12-3506-10
Communication Cable, Phadia® 100	1	12-3500-94

ImmunoCAP® – Specifications

Product	Measuring range	Calibrators
Total IgE	2 - 5000 kU/l	2, 10, 50, 200, 1000, 5000 kU/l
Total IgE Low Range**	0-100 kU/l	0, 0.35, 0.7, 3.5, 17.5, 100 kU/l
Specific IgE	0 - 100 kU _A /l	0, 0.35, 0.7, 3.5, 17.5, 100 kU/l
Phadiatop	Positive/Negative or 0 - 100 PAU/l	0.35 kU/l or 0, 0.35, 0.7, 3.5, 17.5, 100 kU/l
Specific IgA**	1.0 - 100 mg _A /l	0.01, 0.02, 0.04, 0.1, 0.3, 1.0 mg/l
Specific IgG**	2.0 - 200 mg _A /l	0.02, 0.04, 0.1, 0.3, 1.0, 2.0 mg/l
Specific IgG4**	0.07 - 30 mg _A /l	0, 3.0, 15, 35, 120, 300 µg/l
ECP**	2 - 200 µg/l	2, 5, 15, 100, 200 µg/l
Tryptase	1 - 200 µg/l	1, 5, 12.5, 50, 200 µg/l
Thyroglobulin IgG (Phadia® 100)	280 - 28000 IU/ml	0.02, 0.04, 0.1, 0.3, 1.0, 2.0 mg/l
Thyroid Peroxidase IgG (Phadia® 100)	36 - 3600 IU/ml	0.02, 0.04, 0.1, 0.3, 1.0, 2.0 mg/l
Thyroglobulin IgG (Phadia® 250)	244 - 24400 IU/ml	0.02, 0.04, 0.1, 0.3, 1.0, 2.0 mg/l
Thyroid Peroxidase IgG (Phadia® 250)	33.4 - 3340 IU/ml	0.02, 0.04, 0.1, 0.3, 1.0, 2.0 mg/l
Gliadin IgA	1.0 - 100 mgA/l	0.01, 0.02, 0.04, 0.1, 0.3, 1.0 mg/l
Gliadin IgG	2.0 - 200 mgA/l	0.02, 0.04, 0.1, 0.3, 1.0, 2.0 mg/l

EliA™ – Specifications

Product	Evaluation	Antigen
dsDNA	quantitative	double stranded plasmid DNA
ssDNA**	quantitative	synthetic ssDNA
U1RNP	semi-quantitative	human recombinant U1RNP (RNP70, A, C) proteins
RNP70	semi-quantitative	human recombinant RNP 70 protein
SmD ^P	semi-quantitative	synthetic SmD ₃ peptides
Ro	semi-quantitative	human recombinant Ro (60 kDa, 52 kDa) proteins
Ro52**	quantitative	recombinant Ro52 protein
Ro60**	quantitative	recombinant Ro60 protein
La	semi-quantitative	human recombinant La (48 kDa) protein
CENP	semi-quantitative	human recombinant centromere protein B
Scl-70 ^S	semi-quantitative	human recombinant Scl-70 protein
RNA Pol III**	quantitative	human recombinant RNA polymerase III protein
Jo-1	semi-quantitative	human recombinant Jo-1 protein
Rib-P**	quantitative	human recombinant ribosomal P-proteins P0, P1 and P2
Fibrillarin**	quantitative	human recombinant fibrillarin protein
Mi-2**	quantitative	human recombinant Mi-2 protein
PM-Scl**	quantitative	human recombinant PM-Scl protein
PCNA**	quantitative	human recombinant PCNA protein
PR3	semi-quantitative	human purified proteinase 3
MPO	semi-quantitative	human purified myeloperoxidase
GBM	semi-quantitative	human recombinant α3 chain of collagen IV
Symphony	qualitative	human recombinant U1RNP (RNP70, A, C) Ro (60 kDa, 52 kDa), La, Centromere B, Scl-70 and Jo-1 proteins, native purified Sm proteins
CTD**	qualitative	human recombinant U1RNP (RNP 70, A, C), SS-A/Ro (60 kDa, 52 kDa), SS-B/La, Cen tromere B, Scl-70, Jo-1, Fibrillarin, RNA Pol III, Rib-P, PM-Scl, PCNA, Mi-2 proteins, Sm proteins and native purified DNA
M2*	semi-quantitative	native pyruvate dehydrogenase complex from mitochondria and recombinant M2-antigen
CCP	semi-quantitative	citrullinated synthetic peptides (CCP2)
CCP IgA**	quantitative	citrullinated synthetic peptides (CCP2)
RF IgM	quantitative	aggregated rabbit IgG
RF IgA	quantitative	aggregated rabbit IgG
RF IgG**	quantitative	rabbit IgG
Celikey IgA	semi-quantitative	human recombinant tissue transglutaminase
Celikey IgG	semi-quantitative	human recombinant tissue transglutaminase
Gliadin IgA	semi-quantitative	wheat gliadin proteins
Gliadin IgG	semi-quantitative	wheat gliadin proteins
Gliadin ^{DP} IgA	semi-quantitative	synthetic deamidated gliadin peptides
Gliadin ^{DP} IgG	semi-quantitative	synthetic deamidated gliadin peptides ⁴
ASCA IgG**	quantitative	mannan of <i>S. cerevisiae</i>
ASCA IgA**	quantitative	mannan of <i>S. cerevisiae</i>
Cardiolipin IgG	semi-quantitative	bovine cardiolipin
Cardiolipin IgM	semi-quantitative	bovine cardiolipin
Cardiolipin IgA	semi-quantitative	bovine cardiolipin
β2-Glycoprotein I IgG	semi-quantitative	human purified β2-glycoprotein I
β2-Glycoprotein I IgM	semi-quantitative	human purified β2-glycoprotein I
β2-Glycoprotein IgA	semi-quantitative	human purified β2-glycoprotein I
Calprotectin 2**	quantitative	monoclonal antibodies to calprotectin
anti-IgA**	quantitative	purified human IgA
Research**	for research use only	coated with streptavidin
anti-TG**	quantitative	human purified thyroglobulin
anti-TPO**	quantitative	human recombinant thyroid peroxidase antigen

*Pending FDA clearance.
**Available outside the US.

Specifications – VareliSA® Products

Product	Normal range	International Calibration	Standards	Evaluation	Antigen
ANA CTD Screen dsDNA, U1RNP (RNPT0, A, C), Sm, SS-A/Ro (52 kDa, 60 kDa), SS-B/La, Scl-70, CENP-B, Histone, PM-Scl, Rib-P, Jo-1 Antibodies	Negative: Ratio <1.0 Equivocal: Ratio 1.0-1.4 Positive: Ratio >1.4			qualitative	human recombinant and native purified proteins, native purified DNA
ANA 8 Screen RNPT0, Sm, SS-A/Ro(52 kDa, 60 kDa), SS-B/La, Scl-70, CENP-B, Jo-1 Antibodies	Negative: Ratio <1.0 Equivocal: Ratio 1.0-1.4 Positive: Ratio >1.4		0-4-8-20-50-100 U/ml	qualitative	human recombinant and native purified proteins
ANA Profile RNPT0, U1RNP (RNPT0, A, C), Sm, SS-A/Ro(52 kDa, 60 kDa), SS-B/La, Scl-70, CENP-B, Jo-1 Antibodies	Negative: Ratio <1.0 Equivocal: Ratio 1.0-1.4 Positive: Ratio >1.4			qualitative	human recombinant and synthetic peptides
β2-Glycoprotein I IgA Antibodies	Negative: <10 U/ml Equivocal: 10-15 U/ml Positive: >15 U/ml		0-4-8-20-50-100 U/ml	semi-quantitative/qualitative	human purified β2 GP 1
β2-Glycoprotein I IgG Antibodies	Negative: <10 U/ml Equivocal: 10-15 U/ml Positive: >15 U/ml	Erickson, E.N., Da Bari, V.A, et al. (1996) Clin Chem; 42: 1116-7	0-4-8-20-50-100 U/ml	semi-quantitative/qualitative	human purified β2 GP 1
β2-Glycoprotein I IgM Antibodies	Negative: <10 U/ml Equivocal: 10-15 U/ml Positive: >15 U/ml		0-4-8-20-50-100 U/ml	semi-quantitative/qualitative	human purified β2 GP 1
β2-Glycoprotein I Antibodies Screen	Negative: Ratio <1.0 Equivocal: Ratio 1.0-1.4 Positive: Ratio >1.4			qualitative	human purified β2 GP 1
Cardiolipin IgA Antibodies	Negative: <10 APL-U/ml Equivocal: 10-15 APL-U/ml Positive: >15 APL-U/ml	Harris University of Kentucky, Louisville KY,USA	0-4-8-20-40-100 APL-U/ml	semi-quantitative/qualitative	bovine cardiolipin
Cardiolipin IgG Antibodies	Negative: <10 GPL-U/ml Equivocal: 10-15 GPL-U/ml Positive: >15 GPL-U/ml	Harris University of Kentucky, Louisville KY,USA	0-4-8-20-40-100 GPL-U/ml	semi-quantitative/qualitative	bovine cardiolipin
Cardiolipin IgM Antibodies	Negative: <10 MPL-U/ml Equivocal: 10-15 MPL-U/ml Positive: >15 MPL-U/ml	Harris University of Kentucky, Louisville KY,USA	0-4-8-20-40-100 MPL-U/ml	semi-quantitative/qualitative	bovine cardiolipin
Cardiolipin Antibodies Screen	Negative: Ratio <1.0 Equivocal: Ratio 1.0-1.2 Positive: Ratio >1.2	Harris University of Kentucky, Louisville KY,USA		qualitative	bovine cardiolipin
CENP Antibodies	Negative: <3 U/ml Equivocal: 3-8 U/ml Positive: >8 U/ml		0-1-3-10-30-100 U/ml	semi-quantitative/qualitative	human recombinant centromere protein B
dsDNA Antibodies	Negative: <35 IU/ml Equivocal: 35-55 IU/ml Positive: >55 IU/ml	WHO Wo/80	0-12-5-25-50-100-200 IU/ml	quantitative/qualitative	recombinant plasmid double-stranded DNA

Please note: product will be discontinued end of 2016.

Specifications – Varelisa® Products

Product	Normal range	International Calibration	Standards	Evaluation	Antigen
GBM Antibodies	Negative: <7 U/ml Equivocal: 7-10 U/ml Positive: >10 U/ml		0-3-7-16-40-100 U/ml	semi-quantitative/qualitative	human recombinant α3 chain of collagen IV
Glialin IgA Antibodies	Negative: <11 U/ml Equivocal: 11-17 U/ml Positive: >17 U/ml		0-3-7-16-40-100 U/ml	semi-quantitative/qualitative	wheat gliadin proteins
Glialin IgG Antibodies	Negative: <11 U/ml Equivocal: 11-17 U/ml Positive: >17 U/ml		0-3-7-16-40-100 U/ml	semi-quantitative/qualitative	wheat gliadin protein
Celkey® Tissue Transglutaminase (human recombinant) IgA Antibody Assay	Negative: <5 U/ml Equivocal: 5-8 U/ml Positive: >8 U/ml		0-3-7-16-40-100 U/ml	semi-quantitative/qualitative	human recombinant tissue transglutaminase
Celkey® IgG Tissue Transglutaminase (human recombinant) IgG Antibody Assay	Negative: <7 U/ml Equivocal: 7-10 U/ml Positive: >10 U/ml		0-3-7-16-40-100 U/ml	semi-quantitative/qualitative	human recombinant tissue transglutaminase
Helicobacter pylori IgG Antibodies	Negative: <7 U/ml Equivocal: 7-10 U/ml Positive: >10 U/ml		0-3-7-16-40-100 U/ml	semi-quantitative/qualitative	purified H. pylori surface antigens and recombinant 120 kDa antigen
Histone (IgG, IgM) Antibodies	Negative: <15 U/ml Equivocal: 15-30 U/ml Positive: >30 U/ml		0-5-12-30-80-200 U/ml	semi-quantitative/qualitative	purified human histone proteins H1, H2A, H2B, H3, H4
Jo-1 Antibodies	Negative: <3 U/ml Equivocal: 3-8 U/ml Positive: >8 U/ml		0-1-3-10-30-100 U/ml	semi-quantitative/qualitative	human recombinant histidyl-tRNA-synthetase
LKM1 Antibodies	Negative: <2 U/ml Equivocal: 2-3 U/ml Positive: >3 U/ml		0-1-3-10-30-100 U/ml	semi-quantitative/qualitative	human recombinant cytochrome P450 IID6
M2 Antibodies	Negative: <3 U/ml Equivocal: 3-5 U/ml Positive: >5 U/ml		0-3-7-16-40-100 U/ml	semi-quantitative/qualitative	pyruvate dehydrogenase complexes from porcine heart mitochondria
MPO ANCA	Negative: <6 U/ml Equivocal: 6-9 U/ml Positive: >9 U/ml		0-3-7-16-40-100 U/ml	semi-quantitative/qualitative	human purified myeloperoxidase
Parietal Cell Antibodies	Negative: <10 U/ml Equivocal: 10-15 U/ml Positive: >15 U/ml		0-3-7-16-40-100 U/ml	semi-quantitative/qualitative	porcine H ⁺ , K ⁺ ATPase affinity purified
PR3 ANCA	Negative: <6 U/ml Equivocal: 6-9 U/ml Positive: >9 U/ml		0-3-7-16-40-100 U/ml	semi-quantitative/qualitative	human purified proteinase 3

Please note: product will be discontinued end of 2016.

Specifications – VareliSA® Products

Product	Normal range	International Calibration	Standards	Evaluation	Antigen
ReCombi ANA Profile dsDNA, U1RNP (RNPT0, A, C), Sm, SS-A/Ro(52 kDa, 60 kDa), SS-B/La, Scl-70, CENP-B, Jo-1 Antibodies	Negative: Ratio <1.0 Equivocal: Ratio 1.0-1.4 Positive: Ratio >1.4			qualitative	human recombinant proteins and synthetic peptides, plasmid DNA
ReCombi ANA Screen dsDNA, U1RNP(RNPT0, A, C), Sm, SS-A/Ro(52 kDa, 60 kDa), SS-B/La, Scl-70, CENP-B, Jo-1 Antibodies	Negative: Ratio <1.0 Equivocal: Ratio 1.0-1.4 Positive: Ratio >1.4			qualitative	human recombinant and native purified proteins, native purified DNA
U1RNP Antibodies	Negative: <5 U/ml Equivocal: 5-9 U/ml Positive: >9 U/ml		0-3-7-16-40-100 U/ml	semi-quantitative/qualitative	human recombinant U1RNP proteins (RNPT0, A, C)
Scl-70 Antibodies	Negative: <3 U/ml Equivocal: 3-8 U/ml Positive: >8 U/ml		0-1-3-10-30-100 U/ml	semi-quantitative/qualitative	human recombinant DNA topoisomerase I (100 kDa)
Sm Antibodies	Negative: <10 U/ml Equivocal: 10-15 U/ml Positive: >15 U/ml		0-3-7-16-40-100 U/ml	semi-quantitative/qualitative	synthetic SMD peptide
SS-A/Ro Antibodies	Negative: <3 U/ml Equivocal: 3-8 U/ml Positive: >8 U/ml		0-1-3-10-30-100 U/ml	semi-quantitative/qualitative	human recombinant SS-A/Ro (52 kDa, 60 kDa) proteins
SS-B/La Antibodies	Negative: <3 U/ml Equivocal: 3-8 U/ml Positive: >8 U/ml		0-1-3-10-30-100 U/ml	semi-quantitative/qualitative	human recombinant SS-B/La (48 kDa) proteins
ssDNA Antibodies	Negative: <35 U/ml Equivocal: 35-55 U/ml Positive: >55 U/ml		0-12,5-25-50-100-200 U/ml	semi-quantitative/qualitative	synthetic single-stranded DNA
TG Antibodies	Negative: <60 IU/ml Equivocal: 60-100 IU/ml Positive: >100 IU/ml	WHO MRC 65/93	0-30-100-300-1000-3000 IU/ml	quantitative/qualitative	human thyroglobulin, affinity purified
TPO Antibodies	Negative: <60 IU/ml Equivocal: 60-100 IU/ml Positive: >100 IU/ml	WHO MRC 66/387	0-30-100-300-1000-3000 IU/ml	quantitative/qualitative	human recombinant thyroid peroxidase
Sperm Antibodies	Negative: <14 U/ml Equivocal: 14-20 U/ml Positive: >20 U/ml		0-3-7-16-40-100 U/ml	semi-quantitative/qualitative	human sperm surface proteins purified

Please note: product will be discontinued end of 2016.

Thermo Fisher Scientific

4169 Commercial Avenue, Portage, MI 49002, 800.346.4364 www.thermoscientific.com/phadia
499356.05

© 2014 Thermo Fisher Scientific Inc. All rights reserved.
All trademarks are property of Thermo Fisher Scientific and its subsidiaries.
Legal Manufacturer: Phadia AB, Uppsala, Sweden.

Thermo
S C I E N T I F I C

Part of Thermo Fisher Scientific