

Prevent Slips, Trips, and Falls

Slips, trips, and falls can lead to serious injuries and lost time in the workplace. Find the right essentials to help keep your healthcare team members safe.



Caution!
Wet Floor



Safety

Protecting What Matters Most

Floor Mats

Browse durable mats in a variety of colors and sizes with beveled edges to prevent tripping, plus added features for comfort.

PURUS™ EnviroTack™ Contamination Control Mats

- For pharmaceutical, biotech, semiconductor, cleanroom, and industrial settings
- Recyclable; made from GMO-free, plant-based renewable materials
- Gray



| Type | Dimensions | Color | Mfr. No. | Quantity | Cat. No. |
|----------|-------------------------------|-------|--------------|----------|-------------------|
| 30-Layer | 18 x 45 in. (45.7 x 114.3 cm) | Blue | PM 1845 34 B | 4/Case | 19-126-393 |
| | | | PS 1845 38 B | 8/Case | 19-125-813 |
| | 18 x 36 in. (45.7 x 91.4 cm) | Blue | PM 1836 34 B | 4/Case | 19-125-861 |
| | | | PS 1836 38 B | 8/Case | 19-125-807 |
| | 24 x 36 in. (61 x 91.4 cm) | Blue | PM 2436 34 B | 4/Case | 19-125-949 |
| | | | PS 2436 38 B | 8/Case | 19-125-819 |
| | 26 x 45 in. (66 x 114.3 cm) | Blue | PM 2645 34 B | 4/Case | 19-125-950 |
| | | | PS 2645 38 B | 8/Case | 19-125-826 |
| | 26 x 45 in. (66 x 114.3 cm) | Blue | PM 3645 34 B | 4/Case | 19-125-952 |
| | | | PS 3645 38 B | 8/Case | 19-125-832 |
| 60-Layer | 18 x 36 in. (45.7 x 91.4 cm) | Blue | PS 1836 64 B | 4/Case | 19-125-810 |
| | 18 x 45 in. (45.7 x 114.3 cm) | Blue | PS 1845 64 B | 4/Case | 19-125-816 |
| | 24 x 36 in. (61 x 91.4 cm) | Blue | PS 2436 64 B | 4/Case | 19-125-822 |
| | 26 x 45 in. (66 x 114.3 cm) | Blue | PS 2645 64 B | 4/Case | 19-125-829 |
| | 36 x 45 in. (91.4 x 114.3 cm) | Blue | PS 3645 64 B | 4/Case | 19-125-835 |

Prevent Slips, Trips, and Falls

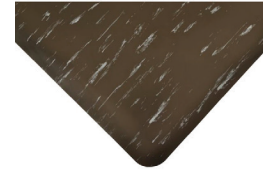


Safety

Protecting What Matters Most

NOTRAX™ Marble Tuff™ Max Anti-Fatigue Mats

- Durable, smooth marble-patterned, heavy-duty vinyl surfaces
- PVC foam bases for comfort
- Beveled edges on all four sides



| Dimensions (L x W x H) | Color | Mfr. No. | Quantity | Cat. No. |
|-------------------------|-------|-------------|----------|-------------------|
| 3 ft. x 75 ft. x .5 in. | Blue | 511R0036BU | Each | 19-086-098 |
| 2 ft. x 3 ft. x .5 in. | Black | 511S0023BL | Each | 19-086-099 |
| | Blue | 511S0023BU | Each | 19-086-100 |
| | Gray | 511S0023GY | Each | 19-086-101 |
| 3 ft. x 5 ft. x .5 in. | Black | 511S0035BL | Each | 19-086-102 |
| | Blue | 511S0035BU | Each | 19-086-103 |
| | Gray | 511S0035GY | Each | 19-086-104 |
| 3 ft. x 12 ft. x .5 in. | Black | 511S0312BL | Each | 19-086-105 |
| | Blue | 511S0312BU | Each | 19-086-106 |
| | Gray | 511S0312GY | Each | 19-086-107 |
| 3 ft. x 2 ft. x 1 in. | Black | 512S0023BL | Each | 19-086-108 |
| | Blue | 512S0023BU | Each | 19-086-109 |
| | Gray | 512S0023GY | Each | 19-086-110 |
| 5 ft. x 3 ft. x 1 in. | Black | 512S0035BL | Each | 19-086-111 |
| | Blue | 512S0035BU | Each | 19-086-112 |
| | Gray | 512S0035GY | Each | 19-086-113 |
| 12 ft. x 3 ft. x 1 in. | Black | 512S00312BL | Each | 19-086-114 |
| | Blue | 512S00312BU | Each | 19-086-115 |
| | Gray | 512S00312GY | Each | 19-086-116 |

Prevent Slips, Trips, and Falls



Safety

Protecting What Matters Most

NOTRAX™ Marble Sof-Tyle™ Grande™ Anti-Fatigue Mats

- Heavy-duty vinyl surfaces with PVC foam bases; beveled edges
- UniFusion™ bond guaranteed; Redstop™ non-slip backing
- Certified by the NFSI (National Floor Safety Institute)



| Dimensions (L x W x H) | Color | Mfr. No. | Quantity | Cat. No. |
|------------------------|-------|-------------|----------|-------------------|
| 3 ft. x 2 ft. x 1 in. | Black | 970S0023BL | Each | 19-086-196 |
| | Blue | 970S0023BU | Each | 19-086-197 |
| | Gray | 970S0023GY | Each | 19-086-198 |
| 5 ft. x 3 ft. x 1 in. | Brown | 970S0023WN | Each | 19-086-199 |
| | Black | 970S0035BL | Each | 19-086-201 |
| | Blue | 970S0035BU | Each | 19-086-202 |
| | Gray | 970S0035GY | Each | 19-086-203 |
| 12 ft. x 3 ft. x 1 in. | Black | 970S00312BL | Each | 19-086-205 |
| | Blue | 970S00312BU | Each | 19-086-206 |
| | Gray | 970S00312GY | Each | 19-086-207 |
| | Brown | 970S00312WN | Each | 19-086-208 |

Cleaning Supplies

Maintain a sanitary work environment with products for cleaning and disinfecting floors, walls, and ceilings.

Vileda Professional™ SafePlus™ MicronRoll Wipes and Dispensers

- Remove 99.98% of bacteria and germs without disinfectants
- Single-use microfiber wipes packaged to fit dispensers
- Dispensers have flexible, antibacterial, and self-closing lids



| Description | Mfr. No. | Quantity | Cat. No. |
|--|--------------|----------|-------------------|
| SafePlus Maxi Wipes, 11 x 12 in., 120 Wipes/Roll, Blue | PS 2436 38 B | 8/Case | 19-125-819 |
| SafePlus Maxi Wipes, 11 x 12 in., 120 Wipes/Roll, Yellow | PM 2645 34 B | 4/Case | 19-125-950 |
| SafePlus Maxi Dispenser, Recycled | PS 2645 38 B | 8/Case | 19-125-826 |
| Replacement Feeder for SafePlus Maxi Dispenser | PM 3645 34 B | 4/Case | 19-125-952 |
| Replacement Lid for SafePlus Maxi Dispenser | PS 3645 38 B | 8/Case | 19-125-832 |
| SafePlus Mini Wipes, 6 x 8 in., 120 Wipes/Roll, Blue | PS 1836 64 B | 4/Case | 19-125-810 |
| SafePlus Mini Wipes, 6 x 8 in., 120 Wipes/Roll, Yellow | PS 1845 64 B | 4/Case | 19-125-816 |
| SafePlus Mini Dispenser | PS 2436 64 B | 4/Case | 19-125-822 |
| Replacement Feeder for SafePlus Mini Dispenser | PS 2645 64 B | 4/Case | 19-125-829 |
| Replacement Lid for SafePlus Mini Dispenser | PS 3645 64 B | 4/Case | 19-125-835 |

Prevent Slips, Trips, and Falls



Safety

Protecting What Matters Most

Vileda Professional™ CombiSpeed Pro Mop Frames

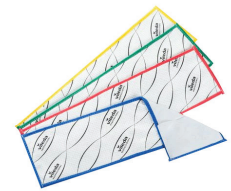
- Slim, angled frame ends and symmetrical double axes
- Lightweight, low-profile design
- Attach to Vileda Extendable Handles (sold separately)



| Description | Mfr. No. | Quantity | Cat. No. |
|---------------------------------------|----------|----------|-------------------|
| NovaClean Floor Cleaner, Concentrated | 143572 | Each | 19-200-755 |

Vileda Professional™ MicroOne™ Premium Pocket Mops

- Microfiber cleaning performance in a disposable mop
- Additional inner layer increases absorbency and floor coverage by 30%
- Fit on CombiSpeed Pro and other common frames; frames sold separately



| Color | Mfr. No. | Quantity | Cat. No. |
|--------|----------|----------|-------------------|
| Blue | 163808 | 25/Pack | 19-200-823 |
| Red | 163810 | 25/Pack | 19-200-824 |
| Yellow | 163820 | 25/Pack | 19-200-825 |
| Green | 163818 | 25/Pack | 19-200-826 |

Vileda Professional™ SprayPro Inox™ Spray Mop Handles

- Professional, ready-to-use spray floor cleaning system
- Lightweight stainless steel finish; universal frame connector
- Water/solution stored in the handle; 3 mL released with each spray



| Description | Mfr. No. | Quantity | Cat. No. |
|----------------------------------|----------|----------|-------------------|
| Spray mop handle, 57 x 5 x 1 in. | 151514 | 6/Case | 19-200-900 |

Micronova™ NovaClean™ Cleaning Products

- Biodegradable detergents
- Do not generate static charges; will not affect conductive flooring
- Filtered to 0.1 µm



| Description | Size | Mfr. No. | Quantity | Cat. No. |
|---|-----------------|----------|----------|--------------------|
| NovaClean Floor Cleaner, Concentrated | 1 qt. (0.85 L) | NC1Q | 8/Case | 19-045-263 |
| | 1 gal. (3.8 L) | NC1G | Each | 19-067494 |
| | 5 gal. (18.9 L) | NC15G | Each | 19-035-381C |
| NovaClean Lab & Glass Cleaner, Ready-to-Use | 1 qt. (0.85 L) | NC2Q | 8/Case | 19-045-264 |
| | 1 gal. (3.8 L) | NC2G | Each | 19-035-3828 |

Prevent Slips, Trips, and Falls



Safety

Protecting What Matters Most

Micronova™ Isolator Tool and Covers

- For ergonomic cleaning of isolators, hoods, RABS, and other small equipment
- Covers are reusable, washable, and autoclavable
- Choose isolator tool with stainless-steel or plastic plates



| Description | Material | Mfr. No. | Quantity | Cat. No. |
|--|--|-----------|----------|--------------------|
| Isolator Cover | Non-Woven Polyamide, Polyester Lining, Elastic Band | ITC6209 | Each | 19-142-602 |
| Isolator Cover | Non-Woven Polyamide, Foam Interior, Polyester Lining, Elastic Band | ITC620911 | Each | 19-142-605 |
| Isolator Cover | Microfiber, 80% Polyester, 20% Polyamide, Elastic Band | ITCAA9 | 50/Case | 19-435-084 |
| Isolator Cover | 100% Smooth Knit Polyester, Urethane Foam Interior, Elastic Band | ITC69 | 50/Case | 19-160-0109 |
| Isolator Cover | Textured 100% Polyester, PolySorb Lining | ITC119NS | 50/Case | 19-435-083 |
| Plastic Isolator Tool, 360 Swivel, ACME Threaded Handle Attachment | Acetal Plate, Polyketone Swivel | QPIT09 | Each | 19-435-082 |
| Isolator Tool, Stainless-Steel Plate, Quick Disconnect Handle Attachment | Stainless Steel, 304 Electropolished, Polyketone | QDIT09 | Each | 19-160-0115 |

Micronova™ PocketMop™ Flat Head Mop Covers

- Economical and lightweight, with angled head
- Fits on QPSL plastic or stainless-steel frame
- Urethane foam interiors



| Material | Color | Dimensions | Mfr. No. | Quantity | Cat. No. |
|-----------------------|-------|-----------------------------|----------|----------|-------------------|
| Microfiber | Blue | 35.6 x 10.2 cm (14 x 4 in.) | PKMAA14 | 24/Case | 19-045-242 |
| Microfiber | Blue | 122 x 10 cm (48 x 4 in.) | PKMAA48 | 24/Case | 19-116-762 |
| Microfiber | Blue | 45.7 x 10.2 cm (18 x 4 in.) | PKMAA18 | 24/Case | 19-045-247 |
| Non-Woven Polyamide | White | 35.6 x 10.2 cm (14 x 4 in.) | PKM2014 | 24/Case | 19-045-244 |
| Microfiber | White | 35.6 x 10.2 cm (14 x 4 in.) | PKMAW14 | 24/Case | 19-045-243 |
| Microfiber | White | 45.7 x 10.2 cm (18 x 4 in.) | PKMAW18 | 24/Case | 19-045-248 |
| Smooth Knit Polyester | White | 35.6 x 10.2 cm (14 x 4 in.) | PKM614 | 24/Case | 19-045-241 |
| Smooth Knit Polyester | White | 45.7 x 10.2 cm (18 x 4 in.) | PKM618 | 24/Case | 19-045-246 |
| Textured Polyester | White | 35.6 x 10.2 cm (14 x 4 in.) | PKM1114 | 24/Case | 19-045-240 |
| Textured Polyester | White | 45.7 x 10.2 cm (18 x 4 in.) | PKM1118 | 24/Case | 19-045-245 |

Prevent Slips, Trips, and Falls



Safety

Protecting What Matters Most



Micronova™ SlimLine™ Cleanroom Mop Adapters

| Description | Length | Material | Mfr. No. | Quantity | Cat. No. |
|--|------------------|---|----------|----------|--------------------|
| Adapter, 360 Swivel | 14 in. (35.6 cm) | Electropolished SS (304), Polyketone Swivel | QSSL14 | Each | 19-116-731 |
| Adapter, 360 Swivel | 18 in. (45.7 cm) | | QSSL18 | Each | 19-116-710 |
| Adapter, 360 Swivel, ACME Threaded Handle Attachment | 9 in. (22.9 cm) | PP Plate and Swivel Joint | QPSL09 | Each | 19-263-611 |
| Adapter, 360 Swivel, ACME Threaded Handle Attachment | 14 in. (35.6 cm) | PP Plate and Swivel Joint | QPSL14 | Each | 19-035-241 |
| Adapter, 360 Swivel, ACME Threaded Handle Attachment | 16 in. (40.6 cm) | PP Plate and Swivel Joint | QPSL16 | Each | 19-116-733 |
| Adapter, 360 Swivel, ACME Threaded Handle Attachment | 18 in. (45.7 cm) | PP Plate and Swivel Joint | QPSL18 | Each | 19-035-240 |
| Quick Disconnect Adapter, 360 Swivel | 9 in. (22.9 cm) | Electropolished SS (304), Polyketone Swivel | QDSL09 | Each | 19-041-776 |
| Quick Disconnect Adapter, 360 Swivel | 14 in. (35.6 cm) | Electropolished SS (304), Polyketone Swivel | QDSL14 | Each | 19-041-768A |
| Quick Disconnect Adapter, 360 Swivel | 18 in. (45.7 cm) | Electropolished SS (304), Polyketone Swivel | QDSL18 | Each | 19-041-768B |

Micronova™ SlideMop™ Flat Head Frame and Mop Covers

- For “dip and wring” or “saturation” methods
- Stainless-steel or plastic frame
- For Controlled Environments ISO 5 thru 9



| Description | Autoclavable | Mfr. No. | Quantity | Cat. No. |
|--|--------------|----------|----------|-------------------|
| Collapsible PP Frame, Threaded Handle Attachment | Yes | QSM16 | Each | 19-116-749 |
| Collapsible SS Frame, Threaded Handle Attachment | No | QPSM16 | Each | 19-116-750 |
| SlideMop Slip-on Mop Cover, Smooth polyester | No | MZCR6316 | 24/Case | 19-116-757 |

Prevent Slips, Trips, and Falls



Safety

Protecting What Matters Most

Micronova™ Mop Frames, Heads, and Adapters

- Choose from options to disinfect or clean to a dry finish
- Fabrics include smooth or textured polyester, meshes for scrubbing, and other low-linting materials
- All flat head mop adapters have 360° swivel



| Description | Mfr. No. | Quantity | Cat. No. |
|---|----------|----------|-------------------|
| Micronova™ SlimLine™ Cleanroom Mop Adapters | QPSL14 | Each | 19-035-241 |
| Micronova™ PocketMop™ Flat Head Mop Covers | PKM614 | 4/Pack | 19-045-241 |
| Micronova™ SnapMop™ Flat Head Mop Covers | QPSL-14 | 24/Case | 19-305-231 |
| Micronova™ SlideMop™ Collapsible Frame, Stainless Steel with Threaded Handle Attachment | QPSM16 | Each | 19-116-750 |
| SlideMop Slip-On Flat Head Mop Covers, Smooth Polyester | MZCR6316 | 24/Case | 19-116-757 |

Micronova™ Cleanroom Sponges

- Nonsterile; reusable; can be autoclaved
- Interiors: cleanroom approved, reticulated urethane foam
- Multiple material cover options



| Material | Dimensions | Mfr. No. | Quantity | Cat. No. |
|----------------------------|----------------------------------|----------|----------|--------------------|
| Non-Woven Polyamide | 15.2 x 10.2 cm (6 x 4 in.) | SP2046 | 24/Case | 19-142-623 |
| Polyvinyl Acetate | 12.7 x 7.6 cm (5 x 3 in.) | SP4533 | 24/Case | 19-435-036 |
| 100% Smooth Knit Polyester | 15.2 x 7.6 cm (6 x 3 in.) | SP6363 | 24/Case | 19-035-375D |
| 100% Smooth Knit Polyester | 7.6 x 7.6 cm (3 x 3 in.) | SP633 | 24/Case | 19-035-375A |
| 100% Smooth Knit Polyester | 15.2 x 10.2 cm (6 x 4 in.) | SP646 | 24/Case | 19-035-375B |
| 100% Smooth Knit Polyester | 17.2 x 10.8 cm (6.75 x 4.25 in.) | SP6745 | 24/Case | 19-035-375C |
| 100% Polyester Mesh Fabric | 15.2 x 7.6 cm (6 x 3 in.) | SP68363 | 24/Case | 19-035-377D |
| 100% Polyester Mesh Fabric | 7.6 x 7.6 cm (3 x 3 in.) | SP6833 | 24/Case | 19-035-377A |
| 100% Polyester Mesh Fabric | 15.2 x 10.2 cm (6 x 4 in.) | SP6846 | 24/Case | 19-035-377B |

Rubbermaid™ HYGEN™ Microfiber General Purpose Cloths

- Polyester with scrubbing zig-zag design
- Tested to withstand 200 launderings in hot water with bleach
- Double-finished edges for durability



| Dimensions | Color | Mfr. No. | Quantity | Cat. No. |
|------------------------------|-------|--------------|----------|-------------------|
| 40.6 x 40.6 cm (16 x 16 in.) | Green | FGQ62000GR00 | 12/Case | 18-367-023 |
| 40.6 x 40.6 cm (16 x 16 in.) | Red | FGQ62000RD00 | 12/Case | 18-367-024 |
| 40.6 x 40.6 cm (16 x 16 in.) | Blue | FGQ62000BL00 | 12/Case | 18-367-025 |



Tapes and Labels

Find products for marking and labeling hazardous areas, equipment, and containers to encourage caution.

Brady™ Anti-Skid Tape Hazard Marking Die Cut Cleats

- For indoor or outdoor use
- Polyester with permanent pressure-sensitive acrylic adhesive
- Chemical, oil, and water resistant



| Message | Colors | Dimensions | Mfr. No. | Quantity | Cat. No. |
|-----------------|-----------------|------------|----------|----------|-------------------|
| CAUTION | Black on Yellow | 6 x 24 in. | 78160 | 24/Pack | 19-103-784 |
| WATCH YOUR STEP | Black on Yellow | 6 x 24 in. | 78163 | 24/Pack | 19-103-787 |

Brady™ Floor and Marking Tapes

- Non-skid tapes bond permanently to clean, dry floors; withstand grease and oil
- Glow-in-the-dark tape is photoluminescent with unlimited recharging ability
- Marking kit contains materials for implementing 5S Lean visuals in your facility



| Description | Dimensions | Mfr. No. | Quantity | Cat. No. |
|--|----------------|----------|----------|-------------------|
| Brady Anti-Skid Floor Tape, Black/Yellow | 2 in. x 60 ft. | 78147 | Each | 19-807-255 |
| Brady Anti-Skid Floor Tape, Black | 2 in. x 60 ft. | 78190 | Each | 19-103-790 |
| Brady™ BradyGlo™ Glow-in-the-Dark Striped Floor Tape, Black/White | 2 in. x 15 ft. | 76430 | Each | 19-103-776 |
| Brady™ ToughStripe™ Premium 5S Marking Kits, Include Floor Marking Tapes, Corner Marks, Shadow Vinyl, Border Tapes | | 142109 | Each | 19-110-631 |

Prevent Slips, Trips, and Falls



Safety

Protecting What Matters Most

Brady™ BradyPrinters and Label Kits

- BradyPrinter M611 Mobile Label Printer includes Express Labels app and Brady Workstation Laboratory Identification Suite software
- BradyPrinter S3100 Sign and Label Makers print on different labels, tapes, tags, and materials
- Choice of supplies to support arc flash warning, pipe IDs, 5S Lean, safety and compliance, and general industrial needs

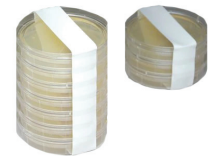


| Description | Mfr. No. | Quantity | Cat. No. |
|---|---------------|----------|-------------------|
| Brady™ BradyPrinter M611 Mobile Label Printer | M611AMLAB | Each | 19-129-498 |
| Brady™ BradyPrinter S3100 Sign and Label Makers* | S3100W | Each | 19-211-102 |
| Supply Kits for Brady™ BradyPrinter S3100 Printers | | | |
| Arc Flash Warning Supply Kits* | S3100WARCKIT | Each | 19-211-188 |
| Pipe ID Supply Kits* | S3100WPIPEKIT | Each | 19-211-191 |
| 5S Lean Visual Supply Kits* | S3100WLEANKIT | Each | 19-211-190 |
| Safety and Compliance Supply Kits* | S3100WSAFEKIT | Each | 19-211-189 |
| General Industrial Supply Kits* | S3100WGENKIT | Each | 19-211-192 |

*Include printer, power cord, USB cable, drivers CD, stylus, cleaning kit, cutter cleaning tool, quick start guide, and documentation holder

Micronova™ MicroSeal™ Tapes

- Microseal tape available in 0.5 and 1 in. widths
- Microseal Cuff Seal tape available in 2 and 3 in. widths
- White color



| Description | Dimensions | Mfr. No. | Quantity | Cat. No. |
|---------------------------|------------------|----------|----------|--------------------|
| MicroSeal™ Tape | 0.5 in. x 18 yd. | CSLB12WH | 72/Case | 19-130-0315 |
| | 1 in. x 18 yd. | CSLB1WH | 36/Case | 19-130-1267 |
| MicroSeal™ Cuff Seal Tape | 2 in. x 18 yd. | CSLB2WH | Each | 19-095-009 |
| | 3 in. x 18 yd. | CSLB3WH | 12/Case | 19-305-831 |

Prevent Slips, Trips, and Falls



Safety

Protecting What Matters Most

Micronova™ PCX™ Polyethylene Tapes

- For sealing, color coding, labeling, batching
- Low density, low outgassing
- Acrylic adhesive



| Dimensions | Color | Mfr. No. | Quantity | Cat. No. |
|--------------------------------|-------------|----------|----------|--------------------|
| 1 in. x 36 yd. (2.5 cm x 33 m) | Transparent | PCX1TR | 36/Case | 19-035-352K |
| 2 in. x 36 yd. (5.1 cm x 33 m) | Transparent | PCX2TR | 24/Case | 19-035-354K |
| 1 in. x 36 yd. (2.5 cm x 33 m) | White | PCX1WH | 36/Case | 19-035-352M |
| 2 in. x 36 yd. (5.1 cm x 33 m) | White | PCX2WH | 24/Case | 19-035-354M |

Micronova™ Cleanroom Barrier Tapes

- For designating restricted areas in cleanroom and controlled environments
- High visibility non-adhesive polyethylene film
- Messages in bold black letters



| Message | Dimensions | Color | Mfr. No. | Quantity | Cat. No. |
|--------------|---------------------------------------|--------|----------|----------|-------------------|
| CAUTION | 3 in. x 1,000 ft. (7.6 cm x 305 m) | Yellow | BT2003YE | 4/Case | 19-435-109 |
| DO NOT ENTER | | Red | BT1003RE | 4/Case | 19-435-108 |

Micronova™ SST™ Striped Safety Tape

- Use to delineate or color code equipment or areas
- Pressure-sensitive laminated vinyl with rubber adhesive
- Resists scuffs, solvents, humidity, and oils



| Dimensions | Color | Mfr. No. | Quantity | Cat. No. |
|----------------------------------|--------------|------------|----------|-------------------|
| 2 in. x 18 yd. (5.1 cm x 16.5 m) | Black/White | SST182BLWH | 24/Case | 19-305-826 |
| 1 in. x 18 yd. (2.53 x 16.5 m) | Black/Yellow | SST181BLYE | 24/Case | 19-305-824 |
| 2 in. x 18 yd. (5.1 cm x 16.5 m) | Black/Yellow | SST182BLYE | 24/Case | 19-305-825 |
| 3 in. x 18 yd. (7.6 cm x 16.5 m) | Black/Yellow | SST183BLYE | 24/Case | 19-435-085 |

Prevent Slips, Trips, and Falls



Safety

Protecting What Matters Most

Autoclave Tapes

- Micronova™ tape stripes change from green to black to indicate sterilization
- Fisherbrand™ tape stripes change from white to black to indicate sterilization



| Description | Quantity | Cat. No. |
|---|----------|-------------------|
| Micronova™ Lead-Free Cleanroom Autoclave Tape, 1 in. x 60 yd. | Each | 19-305-245 |
| Fisherbrand™ Lead-Free Autoclave Tape, 0.75 in. x 180 ft. | Each | 15-901-110 |
| | 4/Pack | 15-901-111 |
| Fisherbrand™ Lead-Free Autoclave Tape, 1 in. x 180 ft. | Each | 15-901-113 |
| | 3/Pack | 15-901-112 |

Fisherbrand™ Cleanroom Tapes

- For light industrial use, clean construction, and cleanroom support
- Nonsterile
- Do not autoclave



| Material | | Color | Quantity | Case Quantity | Cat. No. |
|--------------|--------------------------------|-------------|----------|---------------|--------------------|
| Nylon | 2 in. x 36 yd. (5.1 cm x 33 m) | Black | Each | 24/Case | 19-120-3232 |
| Nylon | 2 in. x 36 yd. (5.1 cm x 33 m) | Brown | Each | 24/Case | 19-120-3233 |
| Nylon | 2 in. x 36 yd. (5.1 cm x 33 m) | Dark Blue | Each | 24/Case | 19-120-3234 |
| Nylon | 2 in. x 36 yd. (5.1 cm x 33 m) | Dark Green | Each | 24/Case | 19-120-3235 |
| Nylon | 2 in. x 36 yd. (5.1 cm x 33 m) | Light Blue | Each | 24/Case | 19-120-3236 |
| Nylon | 2 in. x 36 yd. (5.1 cm x 33 m) | Light Green | Each | 24/Case | 19-120-3237 |
| Nylon | 2 in. x 36 yd. (5.1 cm x 33 m) | Orange | Each | 24/Case | 19-120-3238 |
| Nylon | 2 in. x 36 yd. (5.1 cm x 33 m) | Purple | Each | 24/Case | 19-120-3239 |
| Nylon | 2 in. x 36 yd. (5.1 cm x 33 m) | Red | Each | 24/Case | 19-120-3240 |
| Nylon | 2 in. x 36 yd. (5.1 cm x 33 m) | Transparent | Each | 24/Case | 19-120-3241 |
| Nylon | 2 in. x 36 yd. (5.1 cm x 33 m) | White | Each | 24/Case | 19-095-108 |
| Nylon | 2 in. x 36 yd. (5.1 cm x 33 m) | Yellow | Each | 24/Case | 19-120-3242 |
| Polyethylene | 1 in. x 36 yd. (2.5 cm x 33 m) | White | N/A | 36/Case | 19-120-2532 |
| Polyethylene | 1 in. x 36 yd. (2.5 cm x 33 m) | Yellow | N/A | 36/Case | 19-120-2535 |

Prevent Slips, Trips, and Falls



Safety

Protecting What Matters Most

Stands, Stools, and Carts

Find signs to warn team members of slippery surfaces, non-skid step stools for safely retrieving hard-to-reach items, and storage carts for safe materials transport.



Stands

| Description | Color | Mfr. No. | Quantity | Cat. No. |
|---|--------|----------|----------|-----------|
| Brady™ Two-Sided Stands, Message: CAUTION WET FLOOR | Yellow | 104809 | Each | 19-017553 |



Stools

| Description | Color | Mfr. No. | Quantity | Cat. No. |
|--|-------|--------------|----------|----------|
| Rubbermaid™ Heavy-Duty Step Stools with Non-Skid Bottom Ring, Rubber Wheels, and Retractable Casters | Beige | FG252300BEIG | Each | 11-931-1 |



Carts

| Description | Color | Mfr. No. | Quantity | Cat. No. |
|--|----------|--------------|----------|------------|
| Rubbermaid™ Heavy-Duty Utility Cart with Aluminum Uprights, L x W x H: 33.6 x 18.6 x 38 in. (85.4 x 47.3 x 96 cm) | Platinum | FG342488PLAT | Each | 11-926-71 |
| Rubbermaid™ Xtra™ Utility Cart, HDPE, Open-Sided, 3 Shelves, L x W x H: 40.6 x 20 x 38 in. (103 x 51 x 96 cm), on Casters | White | FG409100OWHT | Each | 11-926-87 |
| Rubbermaid™ Xtra™ Utility Cart, HDPE, Enclosed on 3 Sides, 3 Shelves, L x W x H: 40.6 x 20 x 38 in. (103 x 51 x 96 cm), on Casters | White | FG409300OWHT | Each | 11-926-89 |
| Rubbermaid™ Heavy-Duty Tray-Shelf Carts, Polypropylene, L x W x H: 39 x 18 x 33 in. (99 x 45.4 x 84.5 cm), on Casters, | Black | FG450088BLA | Each | 19-166-523 |

Browse our full collection of safety products at fisherhealthcare.com.

Distributed by Fisher Healthcare. Contact us today:

In the United States

Order online: fisherhealthcare.com

Fax an order: 1-800-290-0290

Call customer service: 1-800-640-0640



© 2021 Thermo Fisher Scientific Inc. All rights reserved.

Trademarks used are owned as indicated at fishersci.com/trademarks.

21-535-0865 ZT 05/2021 BN20216102