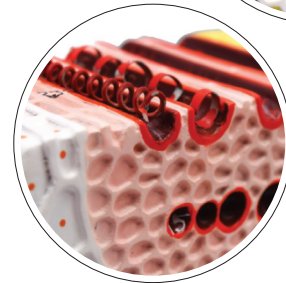
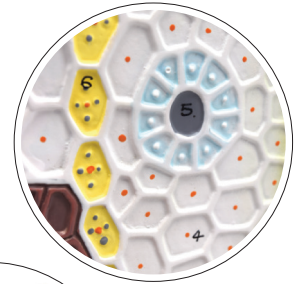


PLANT ANATOMY MODELS

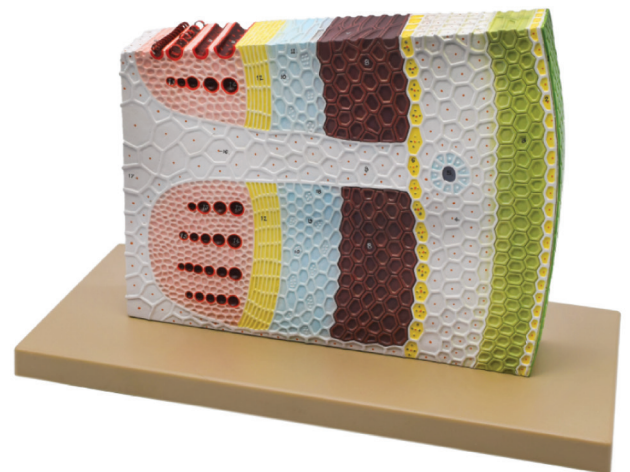
www.fisheredu.com/eisco

Eisco Plant Models offer an **enhanced learning experience** at an incredible **value**. The models have been designed by subject matter experts and are created from the highest quality materials and paint with student safety in mind. These models are vibrant with incredible attention to detail and each comes with a numbered key card to further assist the learning process. Ideal for general biology and botany curriculums.



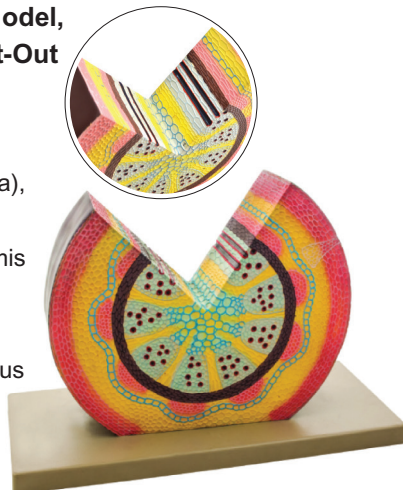
S15629 – Dicot Stem Model, Transverse and Longitudinal Section

- Identified structures: epidermis, epidermal cells, hypodermis, cortex-parenchymatous, mucilage canal, glandular epithelium, xylem fibers, pericycle scleranchymatous, pericycle parenchymatous portion, phloem, sieve tube, interfascicular cambium, xylem, metaxylem vessel, protoxylem vessel, primary medullary ray, pith-parenchymatous, sieve tube, companion cell, simple pitted vessel, reticulated vessel, reticulate vessel, annular vessel, spiral vessel.
- Size: approximately 51L x 15W x 38cm H (20 x 5.9 x 14.9 in.)



S13503 – Dicot Stem Model, Cross Section with Cut-Out

- Identified structures: cuticle, epidermis, hypodermis (collenchyma), cortex-parenchyma, mucilage duct, endodermis (starch sheath), scleranchymatous pericycle, parenchymatous pericycle, phloem, intra fascicular cambium, metaxylem, protoxylem
- Size: approximately 45L x 20W x 13cm H (17.7 x 7.9 x 12.2in)



S27485 – Dicot Stem Model, Transverse Section

- Identified structures: cuticle, epidermis, hypodermis (collenchyma), cortex-parenchyma, mucilage duct, endodermis (starch sheath), scleranchymatous pericycle, phloem, intra fascicular cambium, metaxylem, protoxylem, medullary ray, pith
- Size: approximately 33L x 25.5W x 2.5cm H (13 x 10 x 1in)



S13504 – Monocot Stem Model, Cross Section

- Identified structures: cuticle, epidermal cells, hypodermis scleranchymatous, ground tissue parenchymatous, bundle sheath scleranchymatous, metaxylem vessels, xylem fibers, protoxylem, air cavity, phloem, protophloem, sieve tube, companion cell, sieve plate, pitted vessel, annular vessel, spiral vessel
- Size: approximately 45L x 20W x 30cm H (18 x 8 x 12in)



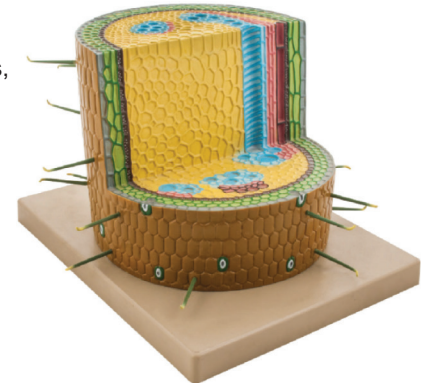
S15018 – Monocot Stem Model, Transverse Section

- Identified structures: cuticle, epidermis, hypodermis, ground tissue (parenchyma), bundle sheath (sclerenchyma), protophloem (broken), companion cell, sieve tube, metaxylem, protoxylem, wood parenchyma, lysigenous cavity
- Size: approximately 33L x 25.5W x 2.5cm H (13 x 10 x 1in)



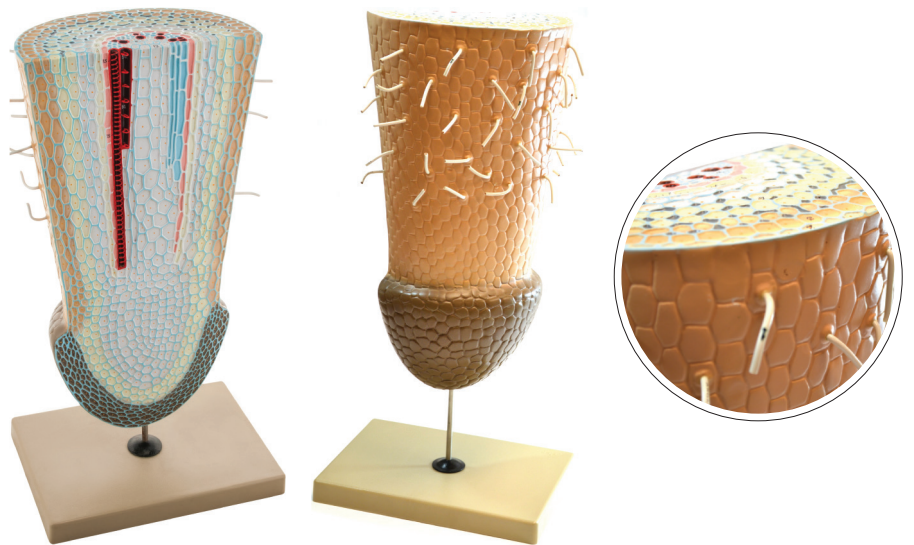
S27486 – Dicotyledon Plant Stem Model, Cross Section with Cut-Out

- Identified structures: epidermis, hypodermis, endodermis, sub stomatal chamber, guard cells, cortex, bundle cap, phloem, xylem bundle, mucilage duct, epidermal hair, annular xylem vessel
- Size: approximately 45L x 40W x 22cm H (18 x 16 x 9in)



S15020 – Root Tip Model

- Identified structures: root hair, epiblema, exodermis, cortex-parenchymatous, intercellular space, endodermis, starch grain, pericycle, protoxylem vessel, metaxylem vessel, conjunctive tissue, phloem bundle, pith, spiral thickening, annular thickening
- Size: approximately 25.5L x 18W x 50cm H (10 x 7 x 19.5in)



Distributed by Fisher Science Education. Contact us today:

In the United States

Order online: fisheredu.com

Call customer service: 1-800-955-1177

Fisher Science Education

4500 Turnberry Drive

Hanover Park, IL 60133

 **fisher science**
education
part of Thermo Fisher Scientific